

- 3-in-1 sensor
- Phillips head screwdriver

If you're experiencing problems with your 3-in-1 sensor such as no wind speed readings or lower than expected wind speed readings and your 3-in-1 sensor is mounted properly, the bearings of the wind cup assembly may be worn and will require replacement.

NOTE: A 3-in-1 sensor is required to install the Replacement Wind Cup Assembly. You will need to remove your 3-in-1 sensor from it's mounting location to install the new assembly.

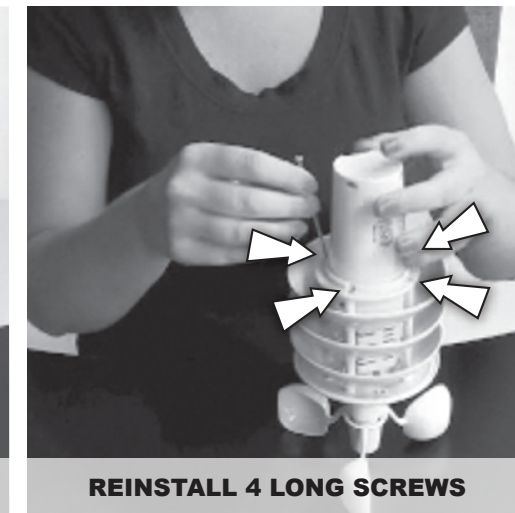
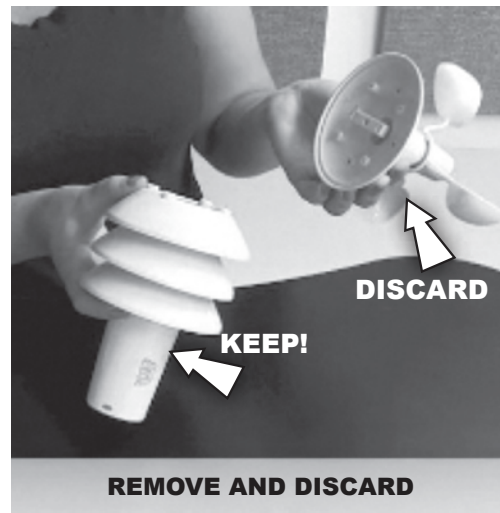
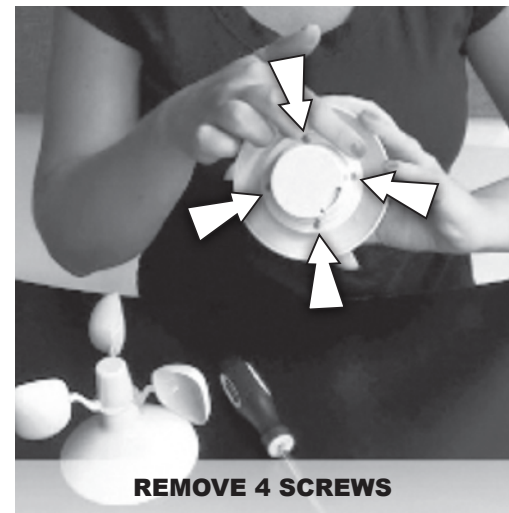


Scan QR Code
to View a Video!



REMOVE BATTERIES FROM SENSOR TO ELIMINATE ERRONEOUS READINGS WHEN HANDLING AND TRANSPORTING SENSOR:

1. Press the release lever and pull off the lower housing of the sensor.
2. Remove the battery compartment cover and remove the batteries.
3. After the sensor bearing is replaced, reinsert the batteries. Follow the polarity (+/-) diagram in the battery compartment. Replace the battery compartment cover and the lower housing of the sensor.



1. Remove 4 LONG screws and separate the upper portion from the lower portion of the sensor.

2. Remove the old assembly and discard.

3. Line up the screw holes on the wind cup assembly with the 3-in-1 sensor.

4. Reinstall 4 LONG screws to connect the wind cup assembly with the 3-in-1 sensor. Installation is complete!