

Description

Microcomputer time controller

Display:1.37" LCD

Timing range: 00:00~99:59(hours, minutes) 0000~9999(seconds)

Power : AC110V~220V /10A/2200W (Max)

Product size: 67×45×34mm

Hole size: 63×42mm

Product weight:63g(110~220V)

Timing mode:Countdown Timer

Timing unit:Seconds + hours; seconds + minutes; seconds + seconds;Minutes + hours; minutes + minutes; minutes + seconds

Hours + hours; hours + minutes; hours + seconds(9 combinations)

Cycle mode:Timing on; timing off; first off and then on and then off (no cycle); first on and off and then on (no cycle); first off and then on (cycle); first on and then off (cycle)

Power supply Method:Working power = control power .Only one circuit is required for the same circuit

Pause:Yes

Restart:Yes

Data storage:Automatically save the last setting parameters by default

Working trigger:Automatic operation after power on

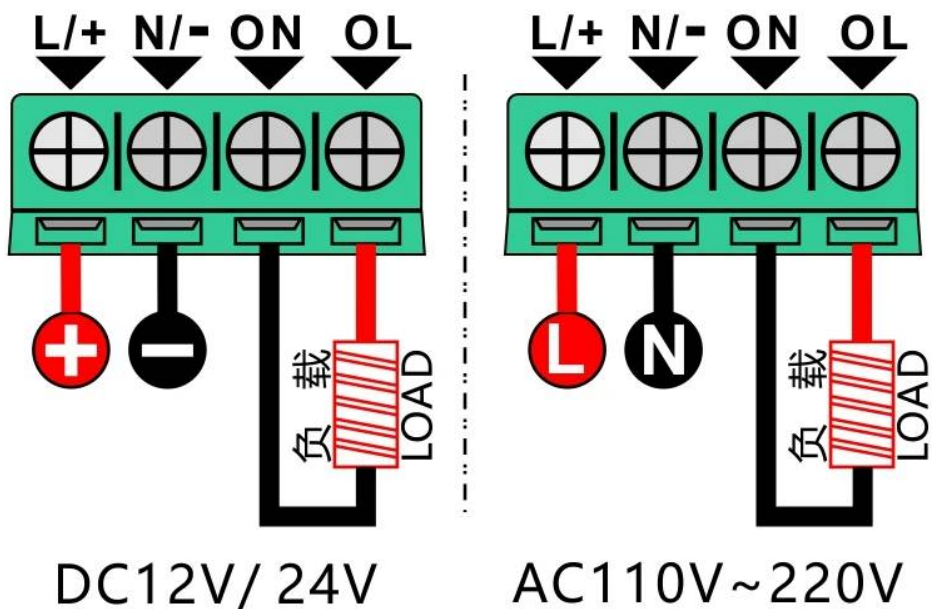
Installation method:Embedded installation, need opening, no screws

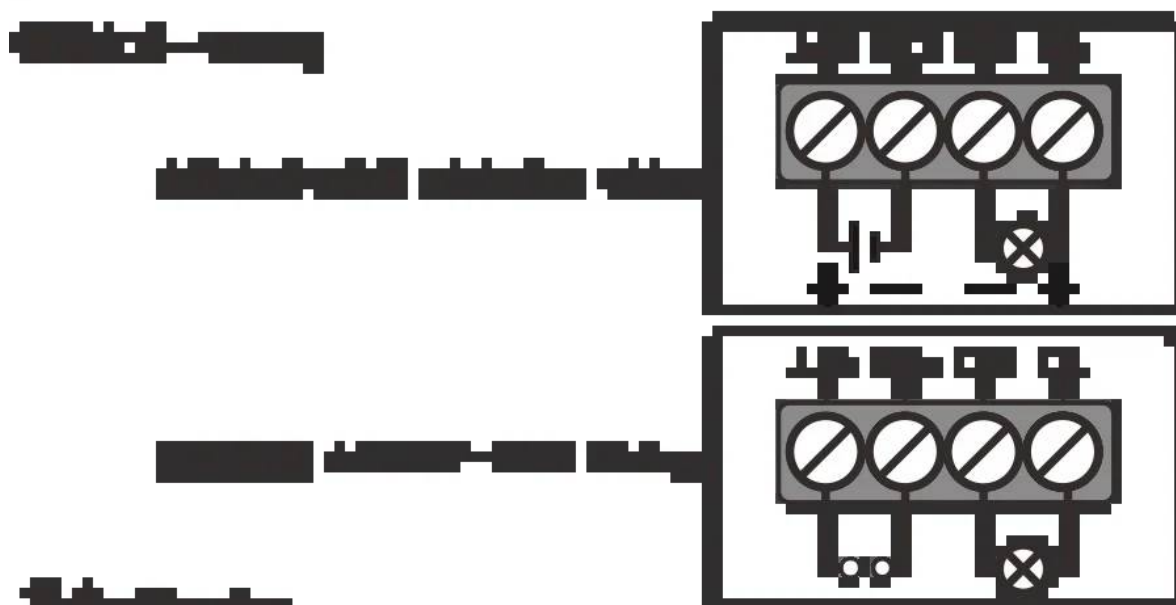
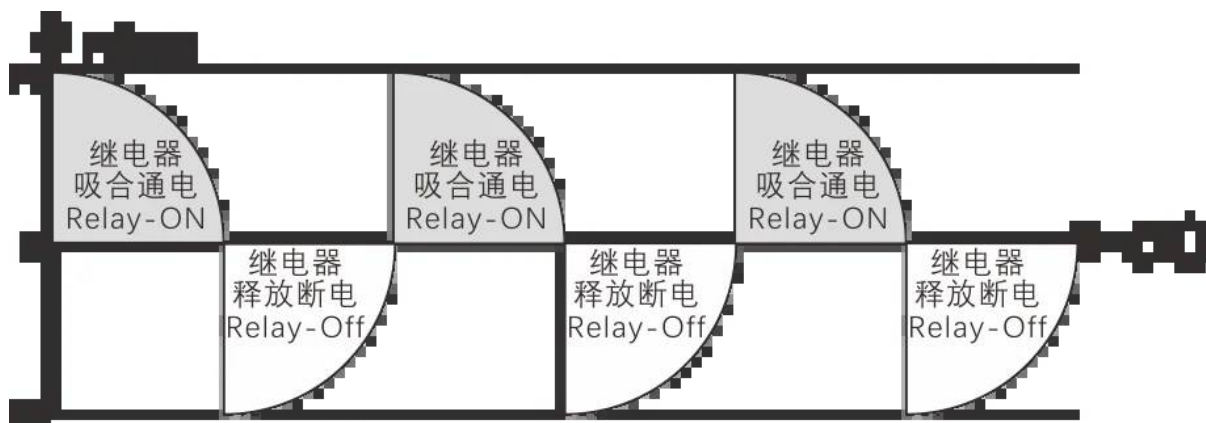
Crystal:Independent crystal

Time error 0.002%, which is 24h ± 1.728s

接线方式

PISIN HAND HELD SECURITY DETECTOR

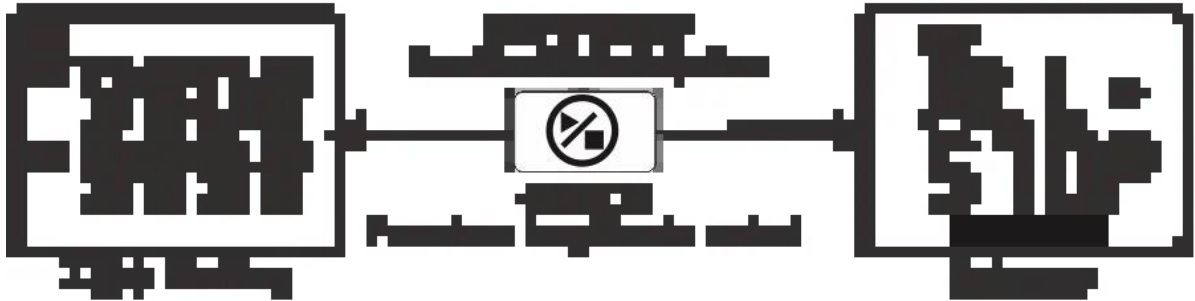
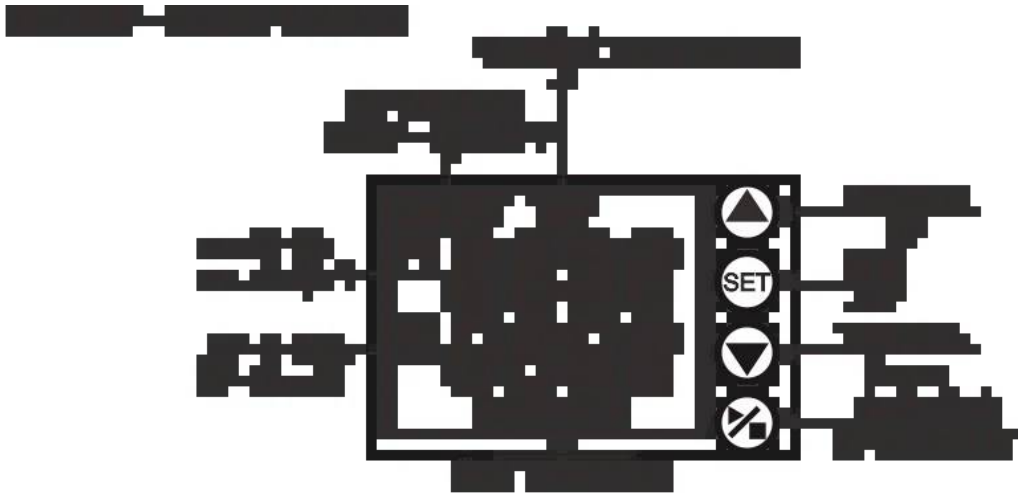




1. 继电器吸合通电
2. 继电器释放断电
3. 继电器吸合通电
4. 继电器释放断电
5. 继电器吸合通电
6. 继电器释放断电

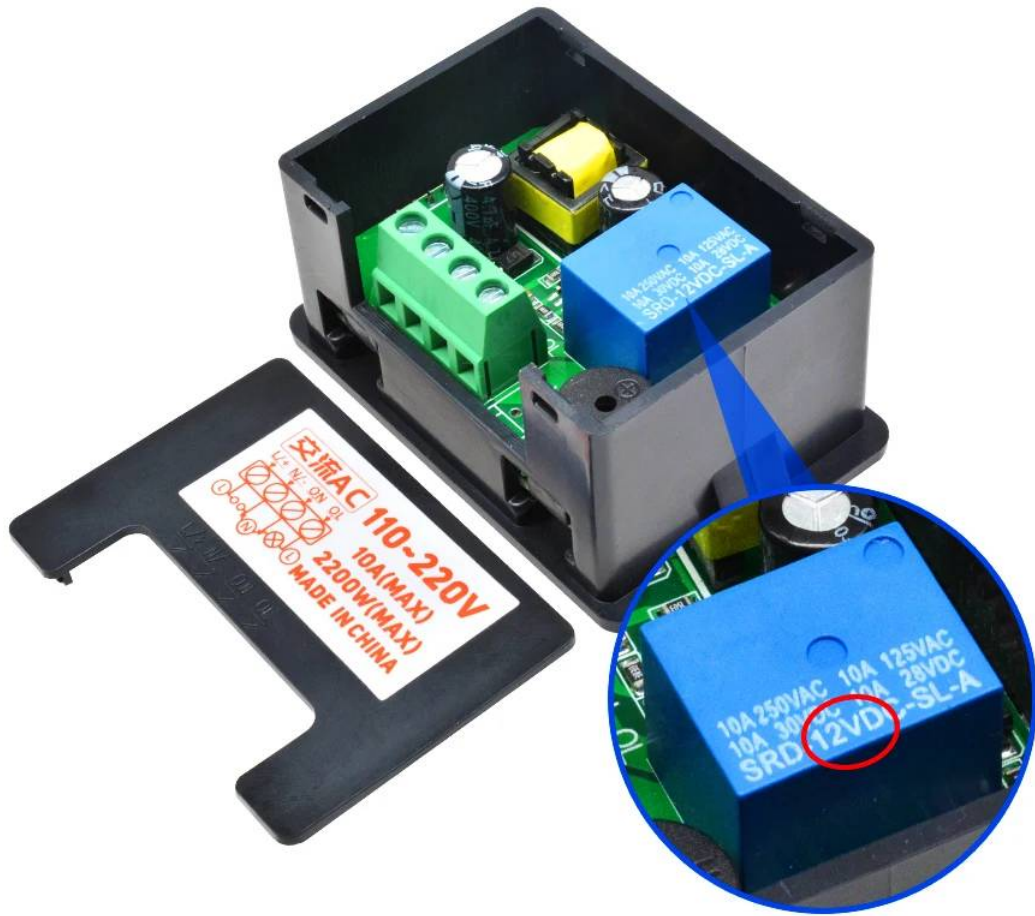








安装孔径
Hole size **60×42mm**



12V is the working voltage of the relay, which can control 110 ~ 220V and the upper limit is 250V

MICROCOMPUTER TIME CONTROLLER

1.37" LCD

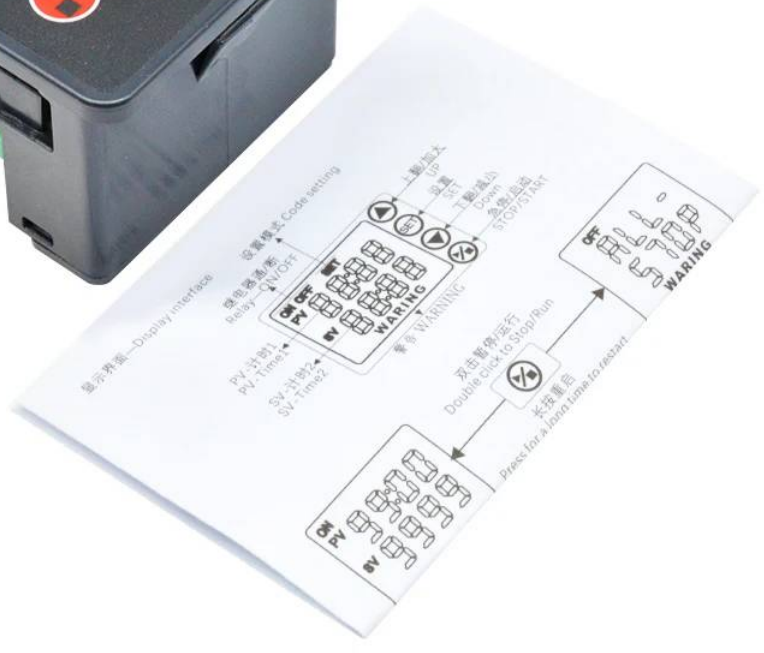


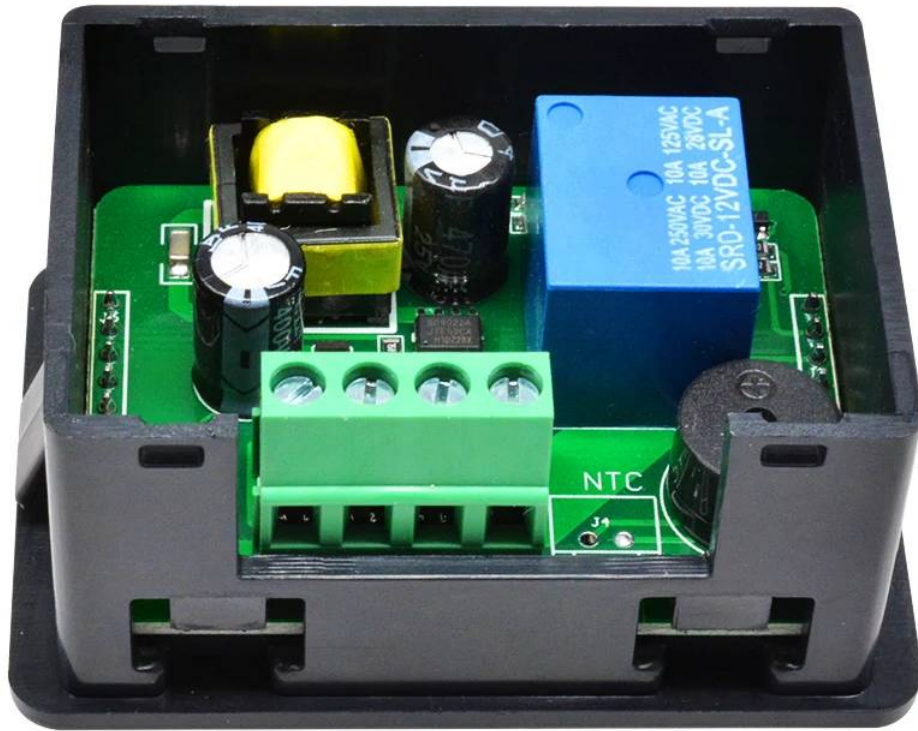
SIMPLE OPERATION

Sensitive buttons for easy operation and durability











Pictures