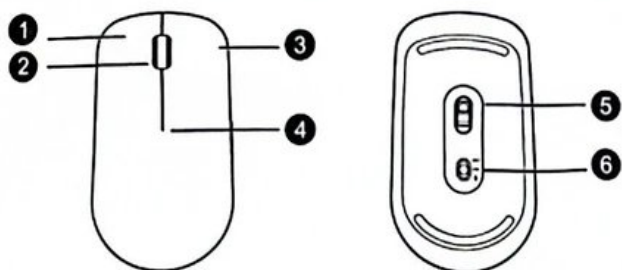


介绍

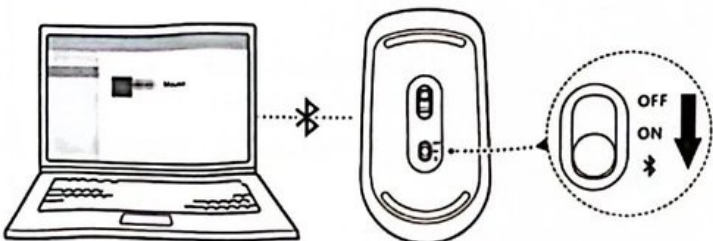


1	左键	2	滚轮+中键
3	右键	4	LED 指示灯*
5	传感器	6	电源/蓝牙® 配对开关

配对

首次使用蓝牙鼠标，需要与主机配对。有以下两种配对方法。

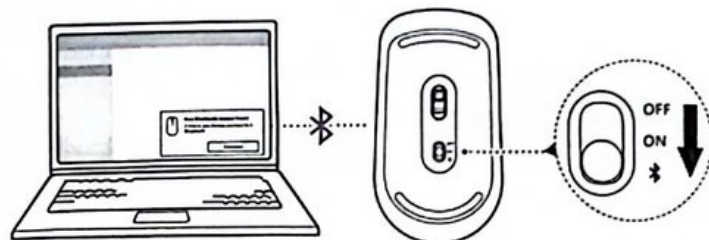
方法一：



1. 按照图示将底部配对开关拨至 处并保持3秒，指示灯闪烁，鼠标进入配对状态。

2. 在主机中，打开设置，进入蓝牙配对界面，选择添加蓝牙设备，主机进入蓝牙配对模式，

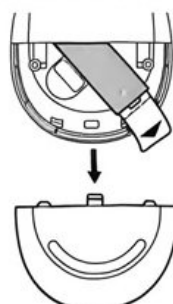
方法二



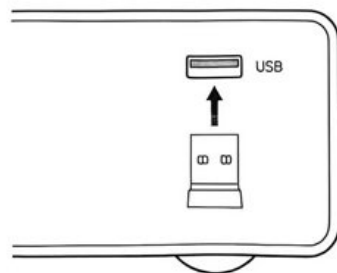
1. 在主机中，打开设置，进入蓝牙配对界面，打开蓝牙开关，并勾选“显示适用“迅速配对”进行连接通知”选项。
2. 按照图示将底部配对开关拨至 处并保持3秒，鼠标进入配对状态。
3. 将蓝牙鼠标靠近主机，如图示主机屏幕弹框提示发现蓝牙鼠标，点击使用

连接至电脑（2.4GHz模式）

1. 参照下图，打开电池盖，即露出电池仓；



2. 取出2.4GHz接收器插入电脑的USB接口；



⚠ WARNING: Please mind potential fire risk and strictly follow the instruction manual for charging and storage. For disposal, please check your local authority's website for more information and dispose of the lithium-ion battery safely in accordance with the applicable legal requirements.

⚠ Warning

General Safety Advisory This area, operation, or product may involve inherent risks. Always assume potential hazards are present until proper safety verification is completed.

Essential Precautions:

1. Assess the Environment: Look for and identify potential dangers such as electrical sources, trip hazards, toxic substances, or moving machinery before proceeding.

2. Use Personal Protective Equipment (PPE): Wear appropriate PPE (e.g., safety glasses, gloves, helmet) as required for the specific task or environment.

3. Follow Procedures: Never bypass safety protocols, guards, or interlocks. Use equipment only for its intended purpose.

4. Stay Alert: Do not operate machinery or perform hazardous tasks if you are fatigued, distracted, or under the influence of medication or substances that impair judgment.

Immediate Action Required:

STOP if you are uncertain about the safety of any action.

CONSULT the relevant official safety manuals or qualified personnel for guidance.

DO NOT PROCEED without proper authorization and training for hazardous tasks.

Your safety and the safety of others is paramount.

Neglecting warnings can lead to severe injury or fatal accidents.



This symbol indicates that this product conforms with all applicable European Union regulations.

"Conformité Européenne" (CE) confirms that the product meets the essential requirements for health, safety, environmental protection and consumer protection as laid down in EU directives.

By affixing the CE marking, the manufacturer declares that the product is in compliance with all legal requirements for CE marking and may be placed on the market throughout the European Economic Area.