

Calumma, Calumma Remote

Repairing procedure in case of loss of calibration values for white colours (channel CTC)

For service purposes only!

1. Switch the calibrated Calumma to DMX mode 3 (12 channels)

2. Send a DMX data packet in which data for CTC meets calibrated colour:

1800K = 21 CTC

2700K = 66 CTC

3200K = 91 CTC

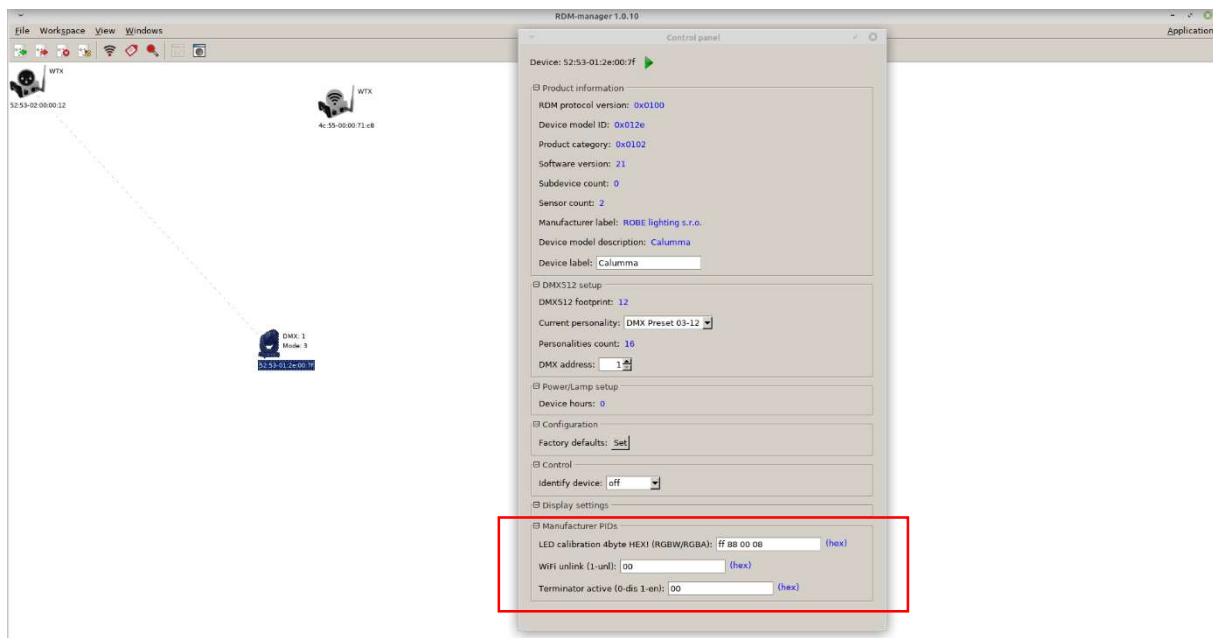
4200K = 141 CTC

5600K = 211 CTC

6500K = 255 CTC

We recommend to send also RGBW values and a Dimmer value to make sure the Calumma responds.

3. Read in the RDM Manager calibrated Calumma. There are 4 bytes of calibration values in the field "LED calibration 4 bytes HEX! (RGBW/RGBA)" in the section "Manufacturer PIDs". The calibration values are read from the first processor (see the picture below).



4. Enter calibration values (factory values for each fixture) and save them to the Calumma by means of the green arrow (it can occur that both halves of the Calumma lights in different colours). If the colour beam from the Calumma has not changed, try to change some byte of calibration values and save it to the Calumma and again change the changed byte to the correct value and save it to the Calumma. If the colour beam from the Calumma still has not changed, you probably have set incorrect value of CTC in DMX data packet.

If you do not have set correct CTC colour, values "FF FF FF FF" will appear in the field "LED calibration 4 bytes HEX! (RGBW/RGBA)" and saving of calibration values to the Calumma will not be successful.

5. Go to step 2, set another CTC colour and repeat steps 3 and 4.

Version 1.0
12.12.2023