

ARROW™

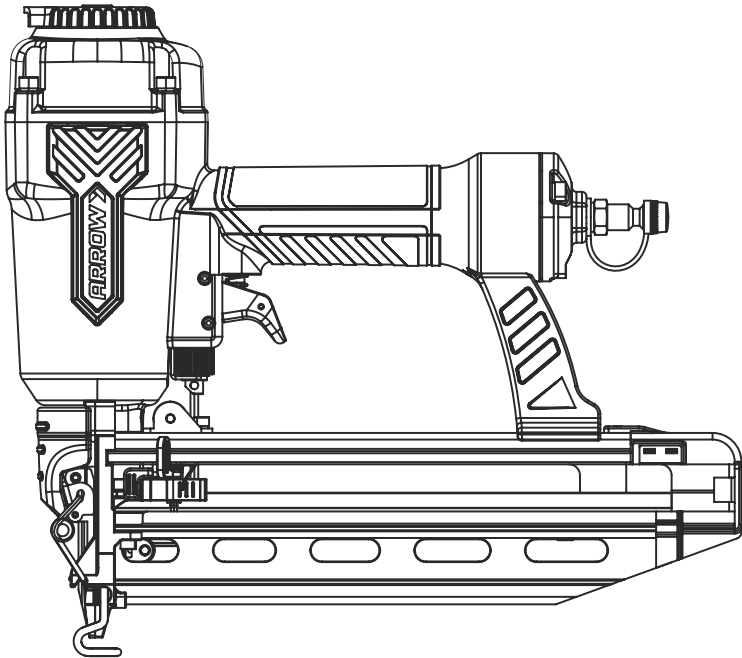
HOW IT ALL COMES TOGETHER

16GA STRAIGHT FINISH NAILER

16GA STRAIGHT FINISH NAILER

16GA STRAIGHT FINISH NAILER

16GA
1 1/4" - 2 1/2"
32 - 64mm
STRAIGHT
FINISH NAIL



Caution: Please read the manual carefully. Misuse of this product could cause property or equipment damage and/ or personal injury.

Arrow Fastener Company, LLC
271 Mayhill Street
Saddle Brook, New Jersey 07663 USA

Made in China
Fabriqué en Chine
Hecho en China

PT16G Rev 11/22



English

GENERAL POWER TOOL SAFETY WARNINGS 3

3 YEAR LIMITED WARRANTY 4

TECHNICAL DATA 4

GENERAL SAFETY RULES 5-6

OPERATING INSTRUCTIONS 7-8

MAINTENANCE 9

SCHE MATIC & PARTS LIST 10



To avoid injury and misuse, please read the instruction manual before operation.

Pour éviter tout risque de blessures et une mauvaise utilisation, prière de lire le manuel d'utilisation avant l'utilisation.

A fin de evitar lesiones y mal uso, lea el manual de instrucciones antes de usar la herramienta.



Comply with all safety messages marked with this symbol to avoid possible injury or death. Respecter tous les messages de sécurité suivant ce symbole pour éviter tout risque de blessures ou de décès.

Observe todos los mensajes de seguridad que aparecen junto a este símbolo para evitar posibles lesiones o la muerte.



To avoid loss of hearing, always wear ear protection when operating the tool.

Pour éviter tout risque de perte auditive, toujours porter des protecteurs d'oreilles en utilisant l'outil.

A fin de evitar pérdida de la audición, siempre use protección para los oídos cuando utilice esta herramienta.



To avoid eye injury always wear safety glasses when operating the tool.

Pour éviter des blessures aux yeux toujours porter des lunettes de sécurité en utilisant l'outil.

Para evitar lesiones en los ojos siempre use anteojos de seguridad cuando utilice esta herramienta.



3 YEAR LIMITED WARRANTY

Arrow Fastener Company warrants to the original consumer purchaser ("you") that this product will be free from original defects in materials and workmanship for 3 years after you purchase it. If the product does not comply with this warranty, Arrow will, at its option, repair or replace the product with an equivalent product at no charge to you. This warranty is not transferable. For best performance, use genuine Arrow nails. Arrow nails are made to exact tolerances to ensure trouble-free performance. This warranty does not cover defect or damage to the extent caused by the use of non Arrow branded nails. This warranty also does not cover damage relating to normal wear and tear, misuse, abuse, neglect, accident, natural disaster, or alteration of the product without Arrow's consent.

TO THE EXTENT PERMITTED BY LAW, ANY IMPLIED WARRANTIES, INCLUDING ANY WARRANTY OF MERCHANTABILITY OR FITNESS FOR A PARTICULAR PURPOSE, ARE LIMITED TO THE SAME DURATION AS THIS EXPRESS WARRANTY. Some states do not allow limitations on how long an implied warranty lasts, so the above limitation may not apply to you.

NO OTHER EXPRESS WARRANTY HAS BEEN MADE OR WILL BE MADE BY ARROW WITH RESPECT TO THIS PRODUCT. ARROW SHALL NOT BE RESPONSIBLE FOR SPECIAL, INCIDENTAL OR CONSEQUENTIAL DAMAGES WHETHER ARISING OUT OF BREACH OF WARRANTY, BREACH OF CONTRACT, TORT, OR OTHERWISE.

Some states do not allow the exclusion of incidental or consequential damages so the above exclusion and limitation may not apply to you. This warranty gives you specific legal rights, and you also may have other rights which vary from state to state. This guarantee does not affect your statutory rights. In Canada, the above provisions are not intended to operate where prohibited by law and do not preclude the operation of any applicable provincial consumer protection statute which may in certain circumstances extend the express warranty herein. To obtain the benefits of this warranty, you must send contact.

Please contact Arrow Fastener by calling
1-800-776-2228 or by writing:

Arrow Fastener Company, LLC
271 Mayhill Street
Saddle Brook, NJ 07663
Attn: Product Warranty Department.

TECHNICAL DATA

Capacity.....	100pcs
Straight finish nails length	1-1/4"-2-1/2"(32-64)mm
Fastener size.....	16Gauge (1.40x1.60mm)
Operation pressure.....	70-110PSI(5-7.5bar)
Air inlet.....	1/4"N.P.T.
Dimension.....	13"x3.43"x11.61"(330x87x295 mm)
Weight.....	4.52 lbs (2.05kgs)

GENERAL SAFETY RULES

- 1. KEEP CHILDREN, VISITORS AND BYSTANDERS AWAY FROM TOOL.** Distractions can cause misuse and possible loss of control. When tool is not operational, it should be locked in a safe place out of the reach of children.
- 2. USE SAFETY GLASSES AND EAR PROTECTION:** Air tool operators and others in work area should always wear safety glasses and ear protection to prevent injury from flying debris as well as possible hearing damage.
- 3. NEVER USE OXYGEN, COMBUSTIBLE OR ANY OTHER BOTTLED GAS** as a power source or it can cause an explosion and serious personal injury. (See fig 2.)
- 4. DO NOT CONNECT TOOL TO COMPRESSED AIR THAT EXCEEDS 120PSI.**
- 5. MAKE SURE HOSE IS FREE OF ANY OBSTRUCTIONS OR SNAGS.** Entangled hoses can cause loss of balance or footing.
- 6. KEEP THE TOOL POINTED AWAY FROM YOURSELF** and others at all times and keep hands, any body parts away from rear area to safety guard against possible injury.
- 7. DISCONNECT TOOL FROM AIR SUPPLY BEFORE LOADING FASTENERS** to prevent accidental firing during connection.
- 8. DO NOT KEEP THE TRIGGER OR SAFETY DEPRESSED WHEN LOADING STAPLES.** This can cause unintentional firing and accidental injury may occur.
- 9. DISCONNECT TOOL FROM AIR SUPPLY HOSE** and close the compressor before performing maintenance and during non-operation.
- 10. DO NOT OVERREACH DURING USAGE.** Maintain proper footing at all times to avoid loss of balance and possible injury.
- 11. DO NOT DRIVE FASTENERS CLOSE TO THE EDGE OF THE MATERIAL.** This can cause the workpiece to potentially split resulting in fasteners ricocheting causing injury to you or your coworkers.
- 12. DO NOT DRIVE FASTENER ON TOP OF NAILED FASTENERS,** or the fasteners can ricochet causing personal injury.
- 13. NEVER USE A TOOL THAT IS LEAKING AIR, HAS MISSING OR DAMAGED PARTS OR REQUIRES REPAIR.** and make sure all the screws are securely tightened.
- 14. ALWAYS OPERATE TOOL IN CLEAN WELL LIT AREAS.** Be sure the work area is clear of any debris.
- 15. ONLY USE PARTS AND ACCESSORIES** recommend by manufacturer.
- 16. BE AWARE OF MATERIAL THICKNESS DURING USE.** A protruding nail can cause injury.
- 17. DO NOT DRIVE NAILS BLINDLY INTO SURFACES.** Be aware of possible electrical wires, plumbing or other types of obstructions that can cause injury or damage.



Fig 2.



WARNING!

Some dust created by power sanding, sawing, grinding, drilling, and other construction activities contains chemicals known to the State of California to cause cancer, birth defects or other reproductive harm. Some examples of these chemicals are:

- lead from lead-based paints,
- crystalline silica from bricks and cement and other masonry products, and
- arsenic and chromium from chemically-treated lumber.

Your risk from these exposures varies, depending on how often you do this type of work. To reduce your exposure to these chemicals: work in a well ventilated area, and work with approved safety equipment, such as those dust masks that are specially designed to filter out microscopic particles.

Use of this tool can generate and/or disburse dust, which may cause serious and permanent respiratory or other injury. Always use NIOSH/OSHA approved respiratory protection appropriate for the dust exposure. Direct particles away from face and body. Always operate tool in well-ventilated area and provide for proper dust removal. Use dust collection system wherever possible.

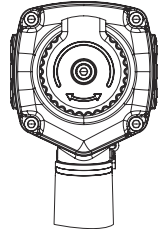
OPERATING INSTRUCTIONS

APPLICATIONS

Including, but not limited to: insulation, roofing felt, house wrap, auto and marine vinyl trim, cabinet felt, cabinet backs, screen door repair, small furniture, light trim, molding and picture frames, and general staple use.

Single Actuation:

1. Grip the handle securely.
2. Depress the trigger.
3. Push the contact safety tip against the workpiece to fire.
4. Remove your finger from the trigger and remove the tool from the workpiece.



ADJUSTING THE EXHAUST

The adjustable exhaust on the cap of the tool allows users to direct the exhaust according to operator preference. To adjust the direction, turn the exhaust cap in the desired direction.

DESCRIPTION

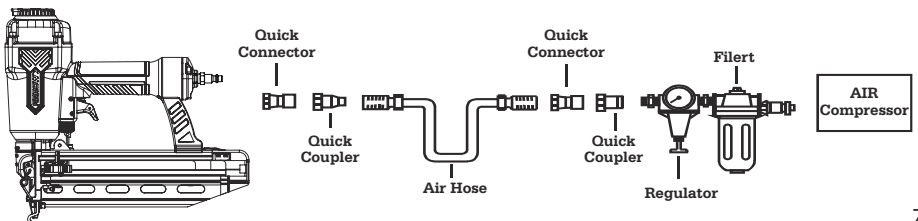
Arrow's PT16G 2-1/2" 16Ga Straight Finish Nailer drives 16Ga straight finish nails from 1-1/4" to 2-1/2" (32mm to 64mm) in length. The tool has a die cast aluminum body for strong and light weight design. The tool features a comfortable rubber handle for improved control and comfort even during extended use and a contact safety to prevent accidental firing and a quick release nosepiece for fast clearing of jams. The tool is ideal for door and window trims, decorative trim, and cabinet work, finish paneling, frames, and flooring.

16GA STRAIGHT FINISH NAIL

1-1/4"	32mm
1-1/2"	38mm
1-3/4"	45mm
2"	50mm
2-1/4"	57mm
2-1/2"	64mm

AIR SUPPLY

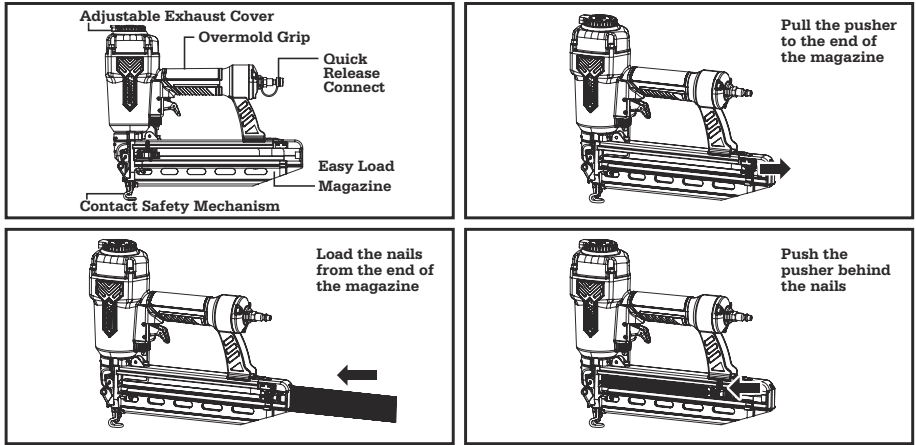
1. Use clean, Dry and Regulated compressed air at 70-110PSI (5-7.5bar)
2. Never exceed maximum and minimum pressure. Too low or too high pressure would cause noise wear and tear or misfiring.
3. When connecting air supply always keep hands and body away from discharge area of tool.
4. A filter-regulator-lubrication is required and should be located as close to tool as possible.
5. Keep air filter clean. A dirty filter will reduce the air pressure to the tool causing a reduction in power and efficiency.
6. For better performance, install a quick connector in your tool and quick coupler on the hose if possible.
7. Be sure all connections in air supply system are sealed to prevent air loss.



LOADING AND OPERATION

! WARNING!

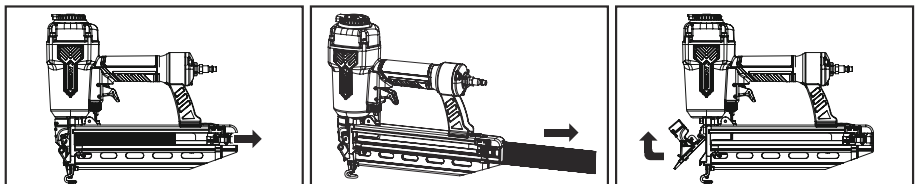
Always disconnect the tool from the compressed air before loading. When loading the tool always keep the tool pointed away from yourself and others. Make sure that you are not holding the tool with trigger depressed while loading to prevent accidental firing.



CLEARING JAMS

Occasionally, a fastener may become jammed in the firing mechanism of the tool, making the tool inoperable. To remove a jammed fastener, follow these steps;

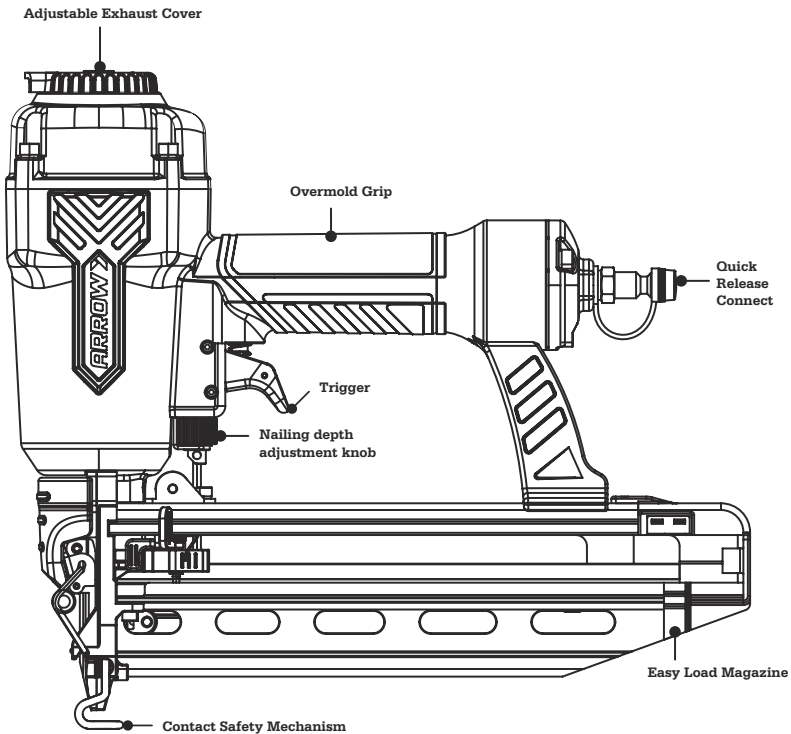
1. Disconnect the tool from air resource, Remove the nails from the magazine
2. Pull up on the latch and open the flooring nose cover.
3. Remove fasteners from the tool. Failure to do so will cause the fasteners to eject from the front of the tool.
4. Push the latch back to the nose cover on the nailer's nose.

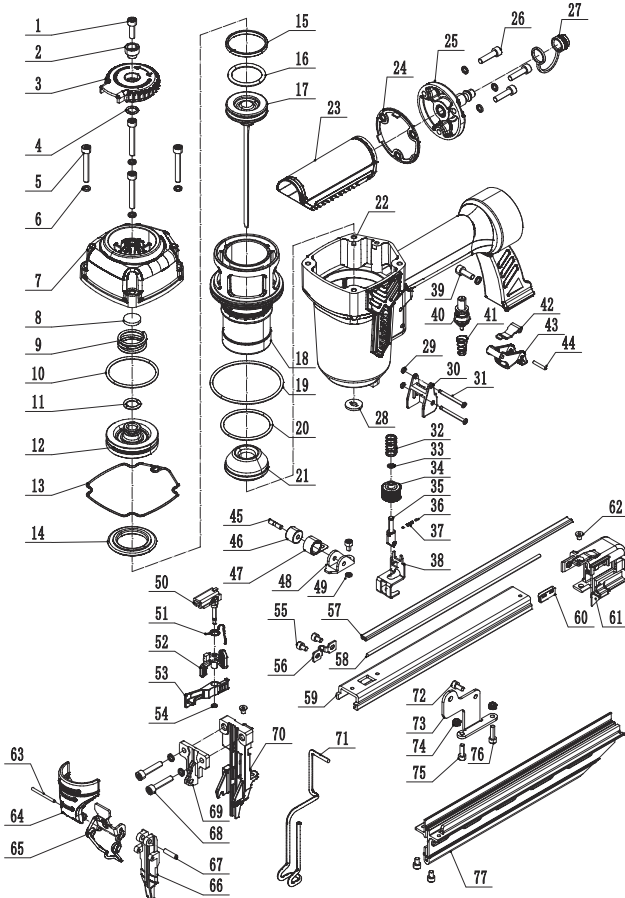


WARNING!

Disconnect the tool from the air compressor before adjusting, clearing jams, servicing, relocating and during non-operation.

- Check and change all worn or damaged o-rings, seals, etc. Tighten all the screws and caps to avoid personal injury.
- Inspect trigger and safety mechanism to assure system is complete and functional with no loose or missing parts.
- Keep magazine and nose of tool clean and free of any dirt lint or abrasive particles.





PART	DESCRIPTION	QTY	PART	DESCRIPTION	QTY	PART	DESCRIPTION	QTY	PART	DESCRIPTION	QTY	PART	DESCRIPTION	QTY
1	Hex Bolt M5X16	1	17	Firing Pin	1	33	E rings 3	1	49	Washer 4	1	65	Quick Release latch	1
2	Bush	1	18	Cylinder	1	34	Adjust the wheel	1	50	Hex Bolt M4X6	6	66	Drive Guide Cover	2
3	Exhaust Deflector	1	19	O-ring 65X2.65	1	35	Adjust lever	1	51	Ejector tube	1	67	Spring pin 4X16	1
4	O-ring 7.5X2.5	1	20	O-ring 44X2	1	36	Steel Balls 2	2	52	Locate handle torsion spring	1	68	Hex Bolt M5X25	2
5	Hex Bolt M5X30	4	21	Bumper	1	37	Spring	1	53	Locate handle	1	69	Plate	2
6	Washer 5	10	22	Body	1	38	Insurance top block	1	54	Pusher	1	70	Drive Guide	1
7	Cylinder Cover	1	23	Rubber Grip	1	39	Hex Bolt M5X14	1	55	Serialized lock washers internal part 3	1	71	Safety	1
8	Shim	1	24	End Cap component gasket	1	40	Switch components	1	56	Safety clamp	1	72	Hex Bolt M4X8	1
9	Compression Spring	1	25	End Cap component	1	41	Spring	1	57	Fillet	1	73	Hoder	1
10	O-ring 45X2.65	1	26	Hex Bolt M5X20	3	42	Trigger Plate	1	58	Slider	1	74	Hex Thin Nuts M4	1
11	O-ring 11.8X2.5	1	27	Plug Cap	1	43	Trigger	1	59	Small Magazine	1	75	Hex Bolt M4X12	1
12	Head Valve	1	28	Nozzle	1	44	Spring pin 2.5X16	1	60	Limit slice	1	76	Hex Bolt M4X14	2
13	Gasket	1	29	O-ring 1.2X1.9	2	45	Coil spring Pin	1	61	Locate base	1	77	Magazine	1
14	Seal	1	30	Insurance guide block	1	46	Basic shaft coil spring	1	62	Hex Bolt M3X6	1			
15	Retaining Ring	1	31	Pin 3X30	2	47	Coil spring	1	63	Spring pin 2.5X30	1			
16	O-ring 29.3K3.5	1	32	Spring	1	48	Coil spring base	1	64	Washer	1			

ARROW  TM
HOW IT ALL COMES TOGETHER