



INSTALLATION GUIDE

PART NUMBER: 150220

LIFT KIT

GM 1500 SUV 2WD/4WD | 2021+

Depending on the Belltech lift kit you purchased, your ride heights will vary.

150220TP/150220TPS: 3.5" to 4.5"

150220HK: 3" to 4"

300 W. PONTIAC WAY. CLOVIS, CA 93612

PHONE: 800-445-3767 | EMAIL: INFO@BELLTECH.COM

THANK YOU

Thank you for choosing our high quality Belltech product. We have spent a great deal of time developing our line of products so that you will receive maximum performance with minimal difficulty during installation. Soon your vehicle will be on the road looking and feeling much improved.

Please take a moment to read all instructions and warnings prior to installation of your new Belltech product and before operating your vehicle. If you have any questions or concerns regarding any step in the installation process, please do not hesitate to call or email our customer support specialists who are trained to help you through any portion of this process.

Before You Begin:

It is of the utmost importance that you confirm all of the components listed on the parts list is in the kit. You can find this list located on the last page(s) of your instructions. Do not begin installation if any part is missing. Instead, please call our Belltech customer service specialists.

Belltech Customer Support:

Phone: 1-800-445-3767

Email: info@belltech.com

Safety Information:

Warning: Do not work under a vehicle supported only by a jack. Place support stands securely under the vehicle in the manufacturer's specified locations unless otherwise instructed.

Proper use of safety equipment and eye/face/hand protection is absolutely necessary when performing any of the following instructions.

We strive for an exceptional experience for all our valued customers. If for any reason you need assistance with your Belltech products, please do not return the product to the store you purchased from, but rather call our dedicated customer service experts, from 6am to 5pm PST.

We recommend that a qualified mechanic, at a properly equipped facility, perform this installation.

It is very helpful to have an assistant available during installation.

Before Driving Your Vehicle:

It is important to double check all brake hoses, cables, and other components to be sure there is no interference. You must also check for wheel/tire to chassis/body interference. If any issues are found, review your installation instructions to be sure no steps were missed and any problems are corrected.

Make sure your vehicle is aligned immediately following installation.

Check all hardware and re-torque at intervals for the first 10, 100, and 1000 miles.

Some of Belltech's products are designed to improve your vehicle's off-road performance. Leveling/lifting your vehicle may result in an altered center of gravity. It is crucial to use extreme care when operating your vehicle to prevent rollover and/or loss of control.

Any changes in your vehicle's suspension may result in transformed handleability. Please test-drive your vehicle in a remote location so you can become accustomed to the revised driving characteristics.

Perform headlight check and adjustment.

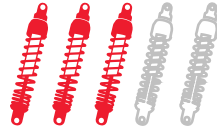
Failure to drive any modified vehicle in a safe manner may result in harm or death.

Never operate your modified vehicle under the influence of drugs, alcohol, or lack of adequate sleep.

Always wear your seatbelt.



DIFFICULTY:



INSTALLATION TIME:

4-6 Hours
+ Alignment

RECOMMENDED TOOLS:

- Properly rated floor jack
- Ratcheting socket wrench and socket set
- Hammer
- Flat head screwdriver or pry tool
- Support stands
- Wheel chocks
- Metric wrench set
- Tape measure
- Paint Pen
- Safety glasses

SPECIALTY TOOLS:

- High quality spring compressor
- Torque wrench up to 200lbs

INSTALLATION PREPARATION:

Before beginning the installation process, measure the hub to fender heights for your vehicle and record them in the “Before” section. After your vehicle has been modified, record the new measurements in the, “After” section. This way, you can compare the resulting height to the original. When taking the measurements, measure vertically from the center of the wheel to the inner edge of the fender.

Before:

LF: _____

RF: _____

LR: _____

RR: _____



After:

LF: _____

RF: _____

LR: _____

RR: _____

JACKING, SUPPORTING, AND PREPARING THE VEHICLE

1. Park your vehicle on a smooth, level, concrete or seasoned asphalt surface.
2. Block the rear wheels of the vehicle using wheel chocks. Make sure the vehicle's transmission is in "PARK" (automatic) or 1st gear (manual).
3. Activate the parking brake.
4. Loosen, but do not remove, the front wheel lug nuts.
5. Lift the front of the vehicle off the ground using a properly rated floor jack. Lift the vehicle so the front tires are approximately 6-8 inches off the ground.
6. Place support stands rated for the vehicles weight. The stands should be positioned in the factory specified locations. (Refer to owners manual). Prior to lowering the vehicle onto stands, make sure the support stands will contact the chassis. It is very important that the vehicle is properly supported to prevent any harm to ones self or to the vehicle.
7. Lower the vehicle slowly onto the stands.
8. Remove the front wheels.

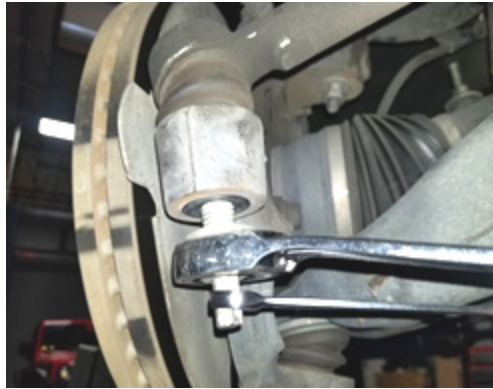


Technician reminder:

Never work under a vehicle supported only by a jack. It is necessary to place support stands securely under the vehicle in the manufacturer's specified locations unless otherwise instructed.

FRONT REMOVAL

- Using a 21mm wrench, remove the tie-rod nut. Strike the side of the mount with a dead blow hammer to dislodge the tie-rod end. A 10mm wrench may be used if the ball joint is slipping.



- Place a jack underneath the lower control arm to support the assembly. Loosen the top and bottom control arm bolts to allow the control arms to move more easily.
- Mark the settings on the eccentric washers to maintain factory alignment during reassembly.
- Remove the ABS sensor wire from the plastic clip.
- Remove the bracket from the control arm using a 10mm wrench. The rotor and caliper can also be removed if easier access is necessary.



- Use a 10mm wrench to remove and unplug the ABS sensor wire from the spindle.
- Using an 18mm and a 9mm wrench, disconnect the sway bar from the end links.



FRONT REMOVAL CONTINUED

16. Remove the lower shield with a 13mm wrench.



17. Remove the axle nut using a 36mm socket. This will help prevent the axle from pulling out of the differential and causing damage. Tap the locating hole on the front axle if it does not move freely.



18. Remove the upper ball joint using an 18mm wrench.

19. Carefully strike the spindle on the designated bosses separate the upper control arm from the spindle. It is important to be careful, as the upper control arm may be under tension. Allow the spindle to droop as you slide the axle shaft out of the hub. It can be helpful to support the spindle by running wire through the top ball joint boss and a supportive spot on the frame to keep the spindle from drooping too far or it swinging while working on the front suspension.



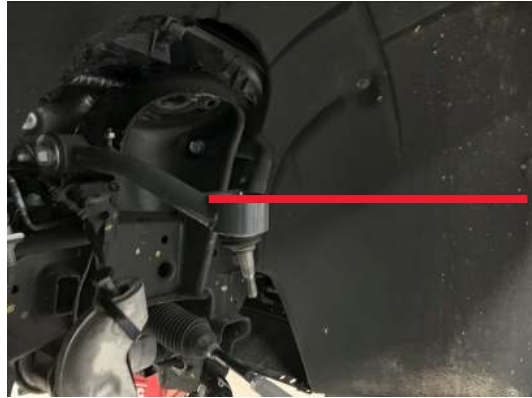
20. Remove the top strut nuts with an 18mm wrench.

21. Unfasten the hardware holding the bottom of the strut to the control arm using a 15mm socket and remove the strut from the vehicle.

22. Remove the upper control arm using either a 21mm or a 24mm socket (depending on model) on the bolt heads on the inside of the strut tower, and a 21mm wrench on the outside nuts.

FRONT INSTALLATION

23. Install the Belltech control arms reusing the OEM hardware. Hold the arm up so the ball joint mounting ring is level and torque to 120ft-lbs.



Level

24. Stop here and perform the front strut installation referencing the included strut/coilover assembly instructions. After your struts are installed please refer back to these instructions and continue to the next step.
25. Re-install the spindles and reattach the upper ball joint nut using an 18mm wrench.
26. Replace the axle nut using a 36mm socket.
27. Install your Belltech skid plate in place of the lower shield. Our skid plate is designed to mount using the same holes and hardware as the plastic shield. Tighten the hardware to 40 ft lb using a 13mm socket.



28. Reconnect the anti-sway bar using an 18mm and 9mm wrench.
29. Reattach the ABS sensor wire to the spindle using a 10mm socket.
30. Reattach the ABS wire to the plastic clip.
31. Replace the bracket on the control arm using a 10mm wrench. If the rotor and caliper were removed for easier access previously, re-install them now.
32. Replace the control arm bolts and realign them based on the markings you made. Torque the lower control arm bolts once the vehicle is on the ground.
33. Remove the jack.
34. Replace the tie-rod nut.
35. Check that all hardware is tightened properly before continuing.
36. Install the wheels and lower the vehicle to the ground.
37. If the complete kit you purchased includes our Belltech front and rear sway bars. Please reference it now to install the front sway bar before finalizing the front installation. When front sway bar installation is complete, please read on to the next step, on page 8.



Technician note:

Re-installation of your front end will be performed in the reverse order of removal. If it helps you to have photographs to reference, you may view the images from the Front Removal section.

FINALIZING THE INSTALLATION

38. Re-install the wheels and tighten the lug nuts.
39. Lift the vehicle and remove the support stands.
40. Carefully lower the vehicle onto the flat ground.
41. Torque the lug nuts to manufacturer's specifications.
42. Check that all components and fasteners have been properly installed and torqued.
43. Re-read and perform all tasks in the "Before Driving Your Vehicle" section of page 1 of your instructions.



belltechsuspension



Belltech Suspension



@belltechsuspension

THANK YOU FOR CHOOSING BELLTECH.

You are now a part of the Belltech family and we are eager to catch a glimpse of your newly modified vehicle. Give us a shout out and let us know how much you love our product. Don't forget, we offer other Belltech related merchandise for you and your vehicle on our website, www.belltech.com!

If you have any questions, concerns, or warranty related issues regarding your Belltech product, please call or email our experienced customer service specialists.

Belltech Customer Support:

Phone: 1-800-445-3767

Email: info@belltech.com

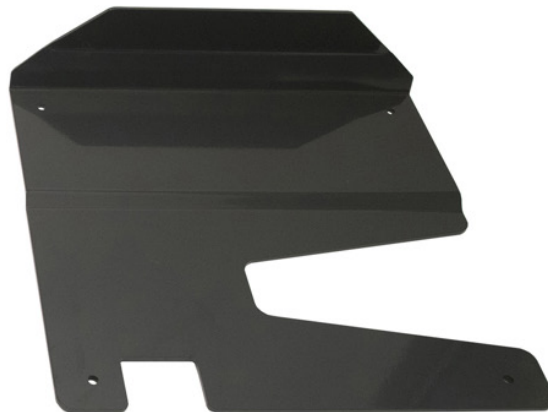


Technician note (Rear Installation):

Depending on the kit you purchased, your rear suspension will include struts or coilovers. The rear suspension will come with its own set of instructions, which you can reference for installation.

If the kit you purchased includes a Belltech anti-sway bar kit, please reference the rear sway bar instructions to install your rear sway bar after installing your rear Belltech suspension.

KIT CONTENTS



LK1000		
Part number	Description	Qty
150212-100L	Control Arm LH	1
150212-100R	Control Arm RH	1
150212-777	Hardware Kit	1
150212-108-992	Skid Plate	1

150212-777 Hardware Kit		
Part number	Description	Qty
110237	Bolt M10 x 1.50 - 70mm	4
110238	Nut Nylock	4
9999-001	Loctite 271 Threadlocker Red	1