

POWERLOOP

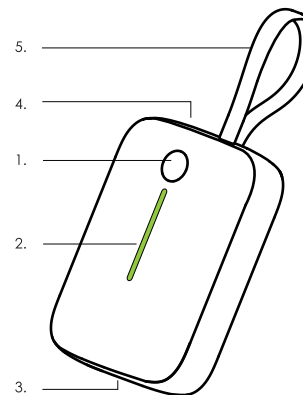
10,000mAh power bank



in the box



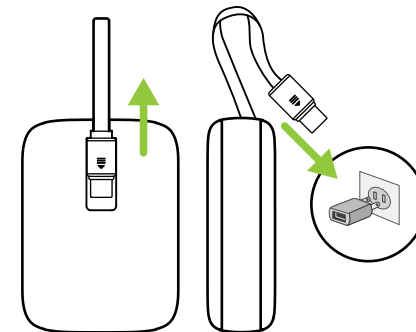
details



- 1) On/Off Button
- 2) LED POWER BAR
- 3) USB-A Output
- 4) USB-C input & output
- 5) Intergrated USB-C cable input & output

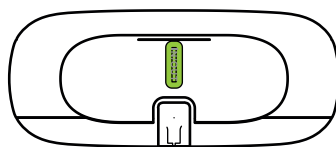
charging

To charge the power bank, slide up the integrated USB-C cable (5) and plug it into a compatible USB-C socket.

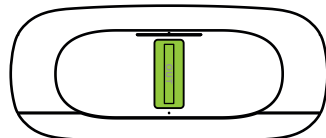


The LED power bar [2] will flash and gradually fill up, turning off once fully charged.

charge ports



USB-C Output : 5V/3A, 9V/2.22A, 12V/1.67A PD20W



USB-A Output : QC3.0 18W (5V/3A, 9V/2A, 12V/1.5A) SCP:10V/2.25A 22.5W max

features

LED Power bar
 USB-C female port with two-way fast charging at 20W PD power.
 USB-A 22.5A fast charging output.
 Integrated USB-C cable for charging and discharging, no extra cables needed.
 Li-ion battery with enhanced safety and stability.
 Low discharge for extended standby time.
 Highly compatible, works with a wide range of mobile phones.
 Intelligent protection system to prevent overcharging, over-discharging, overheating, short circuits.
 Compact design, easy to carry.



Capacity : 10000mAh/37Wh
 USB-C port Input : 5V/3A, 9V/2A, 12V/1.5A PD18W
 USB-C intergrated cable Input : 5V/3A, 9V/2A, 12V/1.5A PD18W
 USB-C port Output : 5V/3A, 9V/2.22A, 12V/1.67A PD20W
 USB-C intergrated cable Output : 5V/3A, 9V/2.22A, 12V/1.67A PD20W
 USB-A Output : QC3.0 18W (5V/3A, 9V/2A, 12V/1.5A) SCP:10V/2.25A 22.5W max
 Total output : 5V/3A 15W max
 Size : 83.3 x 61 x 26.3mm
 Weight : 193g

Attention:

- Make sure to fully charge the product before first-time use.
- If you notice swelling, leakage, deformation, immersion in water, or a short circuit, stop using the product immediately.
- Avoid dropping the device or exposing it to high temperatures, moisture, or strong magnetic environments.
- Keep the power bank out of reach of children.
- Avoid leaving the product on the car dashboard as strong sunlight can cause damage due to high temperatures.
- Do not insert any debris into the input or output ports to prevent damage or short circuits.
- Use qualified or cell phone matching charging cables, power adapters, and other accessories to avoid any issues during product use.
- Do not use an all-in-one cable to charge multiple devices simultaneously, as it may damage the power bank.
- Before charging, confirm that your device's input voltage matches the power bank's output voltage.
- To maintain performance, fully charge and discharge the power bank at least every 3 months to prevent over-discharge during long periods of inactivity.

Warning:

- The device contains a Li-ion battery cell. Do not disassemble the power bank's shell without permission, as it may cause damage to the cell or pose other risks.
- Avoid disassembling, pressing, puncturing, or short-circuiting the power bank. Do not expose it to water, fire, or temperatures above 60 °C to prevent fire or other hazards.
- The device is equipped with overheat protection. If it stops working due to the environment's high temperature, place it in a normal environment, and restore its output by short-pressing the button.

Online manuals:

