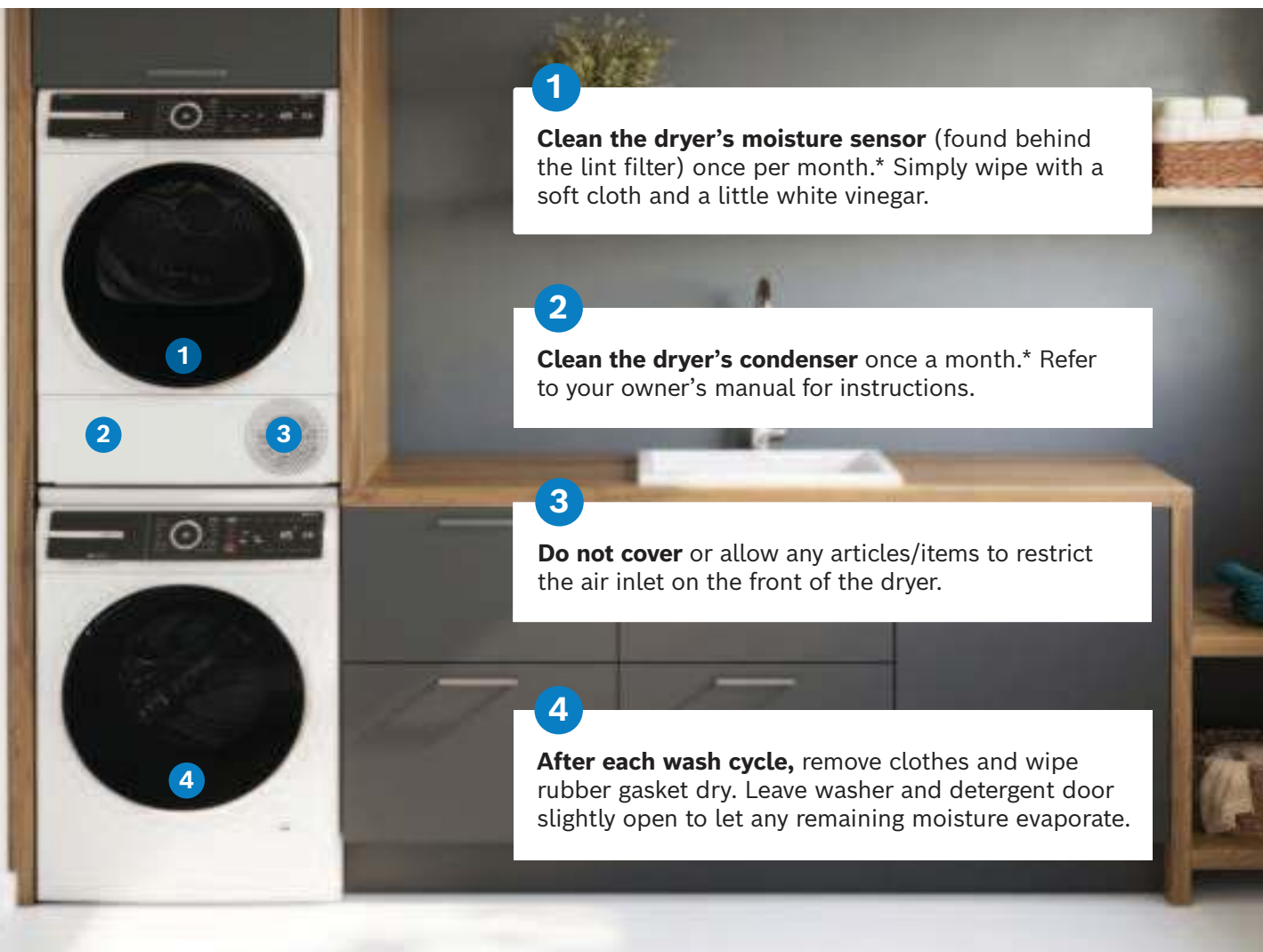


Bosch Washer and Dryer Quick Tips and Tricks

**1**

Clean the dryer's moisture sensor (found behind the lint filter) once per month.* Simply wipe with a soft cloth and a little white vinegar.

2

Clean the dryer's condenser once a month.* Refer to your owner's manual for instructions.

3

Do not cover or allow any articles/items to restrict the air inlet on the front of the dryer.

4

After each wash cycle, remove clothes and wipe rubber gasket dry. Leave washer and detergent door slightly open to let any remaining moisture evaporate.

Other useful tips to get the most from your Bosch washer & dryer:

- **Clean lint filter after each drying cycle** by pulling out filter and removing lint using hands. For severely dirty filter, rinse gently under running water and allow to completely dry before reinserting.
- **Pair your Bosch washer and dryer with the Home Connect® app**** on your phone or tablet to receive cycle status notifications or remote start your appliances.
- **Use a high-efficiency detergent**, which creates less suds and cleans clothes with less detergent.
- **Use the highest possible spin speed** recommended for the type of laundry. Higher spin speeds help extract more moisture to reduce the drying time and energy consumption.
- **Be sure not to overfill your washer or dryer** – see the user manual for recommended load size for chosen program.

Laundry Stacking Kit sold separately. Visit www.bosch-home.com/us/shop to purchase.

*Depending on usage. Not applicable for Bosch 500 and 800 Series Dryers with Self-cleaning Condenser™.

**Home Connect® for laundry is available in Bosch 500 and 800 series washers and dryers. Download the app on Apple App Store or Google Play.



Need Assistance?

For additional assistance or questions, check out our Owner Support Resources at: [bosch-home.com/us/owner-support](https://www.bosch-home.com/us/owner-support)

For complete product information, refer to the Owner Manual available online at: [bosch-home.com/us/owner-support/get-support/owner-manuals](https://www.bosch-home.com/us/owner-support/get-support/owner-manuals)

Can't find what you're looking for?

Reach the Bosch Customer Support Team at **1-800-944-2904**

