

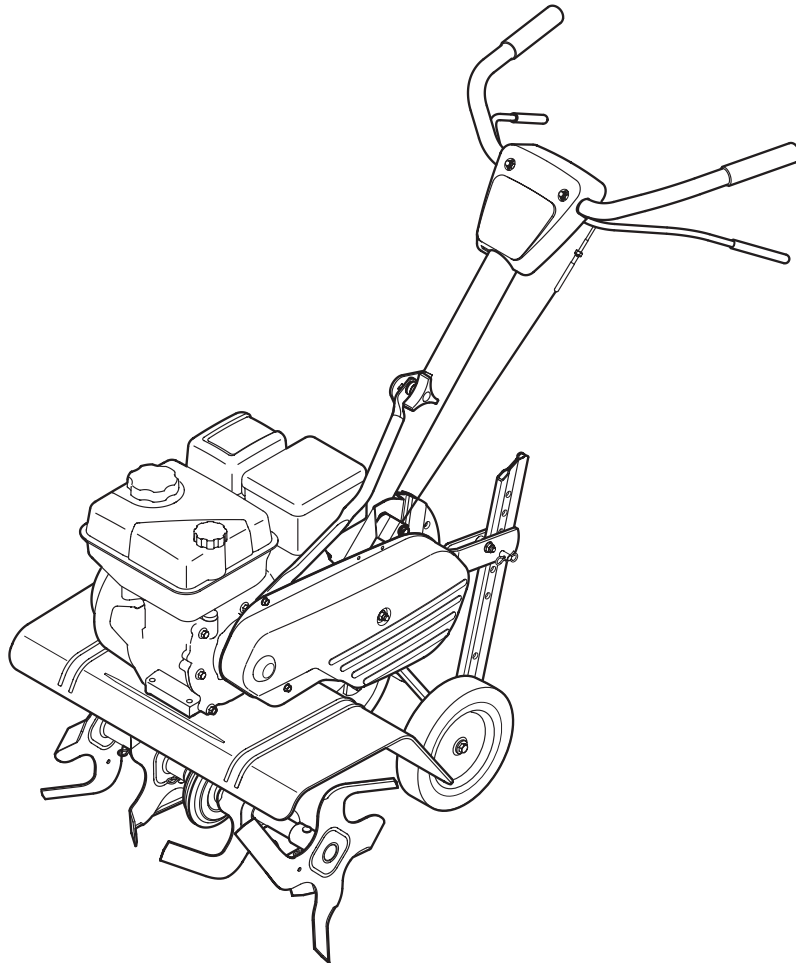
# Operator's Manual

# CRAFTSMAN<sup>®</sup>

**208cc Engine**

**Front Tine Tiller**

Model No. 247.29934



**CAUTION:** Before using this product, read this manual and follow all safety rules and operating instructions.

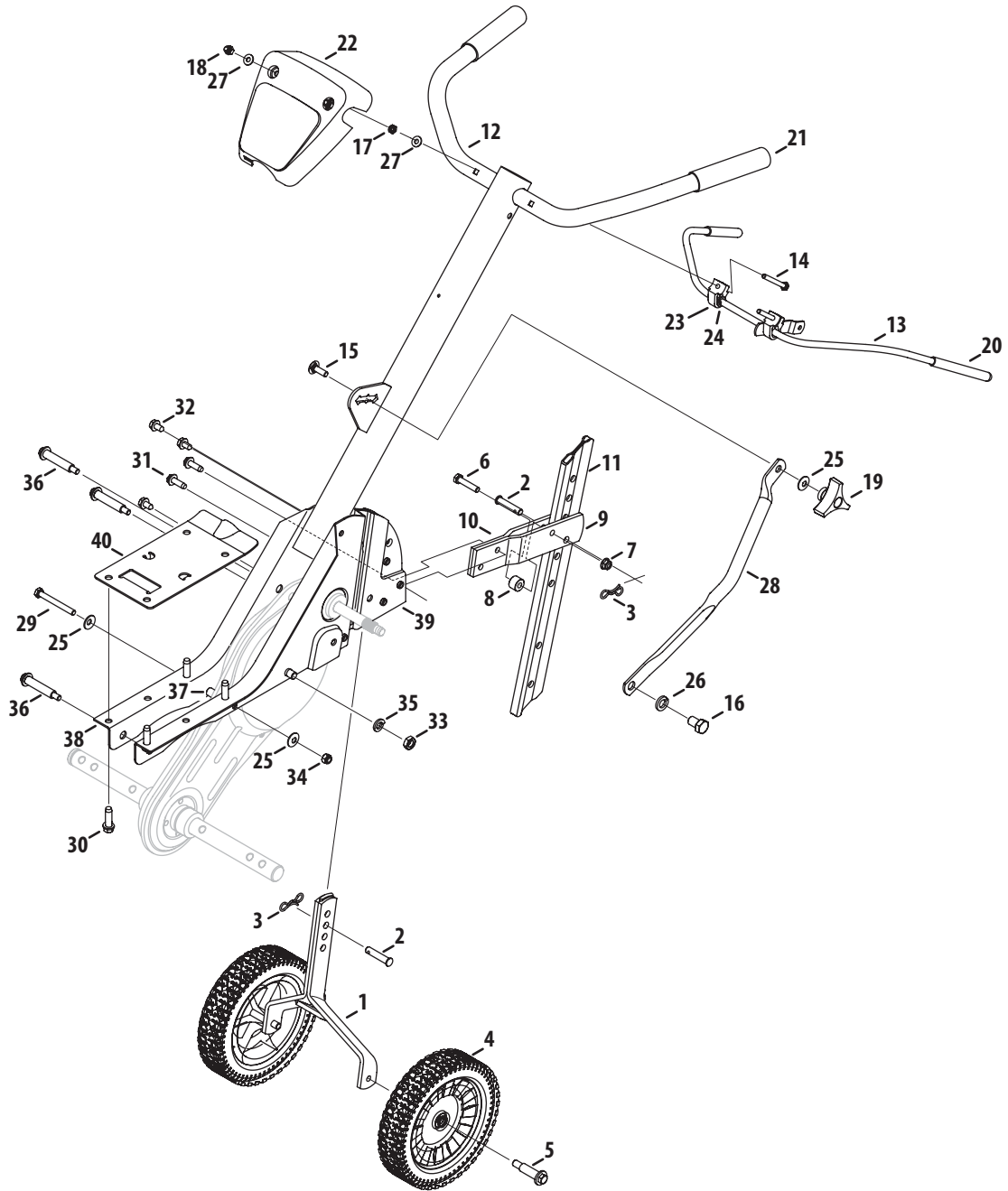
- SAFETY
- ASSEMBLY
- OPERATION
- MAINTENANCE
- PARTS LIST
- ESPAÑOL

**Sears Brands Management Corporation, Hoffman Estates, IL 60179, U.S.A.**  
Visit our web site: [www.craftsman.com](http://www.craftsman.com)

FORM NO. 769-05511A  
12/02/2009

# PARTS LIST

Craftsman Tiller — Model No. 247.29934



# PARTS LIST

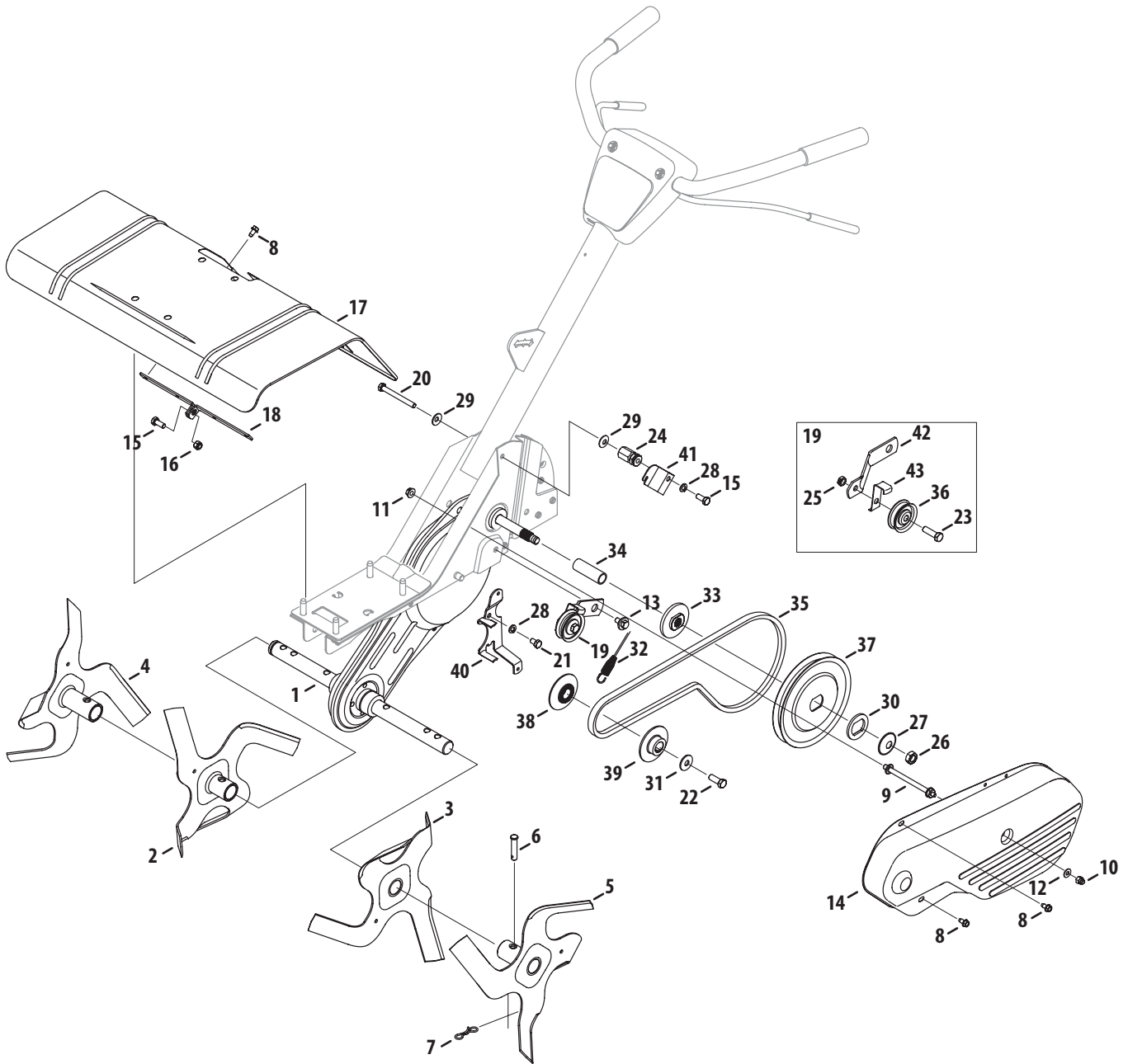
## Craftsman Tiller — Model No. 247.29934

Ref. No.	Part No.	Description
1	686-0081A-0637	Wheel Bracket Assembly
2	911-0415	Clevis Pin, .375 x 1.75
3	714-04043	Bow Tie Cotter Pin
4	734-04547	Complete Wheel Assy. 8 x 1.75
5	738-0929	Shoulder Screw, .496 x 1.445 3/8-16
6	710-0805	Hex Head Screw, 5/16-18 x 1.50
7	712-04063	Nut, 5/16-18, Flange Lock
8	750-0890	Spacer, .325 ID x .75 OD x .520
9	786-0003-0637	Tail Bracket, LH
10	786-0004-0637	Tail Bracket, RH
11	786-0005-0637	Depth Bar
12	649-04040-0721	Complete Handle Assembly
13	686-0083-0637	Clutch Bail
14	710-0641	Hex Head Screw, 1/4-20 x 2.25
15	710-1236	Carriage Screw, 5/16-18 x 1.00
16	710-3194	Hex Head Screw, 1/2-20 x .750
17	912-0298	Jam Nut, 1/4-20
18	912-0442	Nut, 1/4-20, Lock
19	720-0195	Handle Knob
20	720-0269	Grip, Clutch Bail

Ref. No.	Part No.	Description
21	720-0274	Grip, Handle
22	731-06253A	Handle Cover
23	931-1645A	Clutch Bail Holder
24	936-0140	Flat Washer, .385 x .62 x .063
25	736-0242	Bell Washer, .340 x .872 x .060
26	936-0921	Lock Washer, 1/2
27	936-3020	Flat Washer, .271 x .630 x .065
28	749-1401A-0721	Handle Brace
29	710-0176	Hex Head Screw, 5/16-18 x 2.75
30	710-0502A	SEMS Screw, 3/8-16
31	710-0602	Self-Tapping Screw, 5/16-18 x 1.00
32	710-0604A	Self-Tapping Screw, 5/16-18 x .625
33	912-0240	Jam Nut, 7/16-20
34	912-0384	Nylon Hex Lock Nut, 5/16-18
35	936-0171	Lock Washer, 7/16
36	738-0934	Shoulder Screw, .475 x 2.11 5/16-18
37	750-0470	Spacer, .47 OD x .96
38	786-0138A-0721	Frame, RH
39	786-0139A-0721	Frame, LH
40	786-0145A-0721	Engine Mounting Plate

# PARTS LIST

Craftsman Tiller — Model No. 247.29934



# PARTS LIST

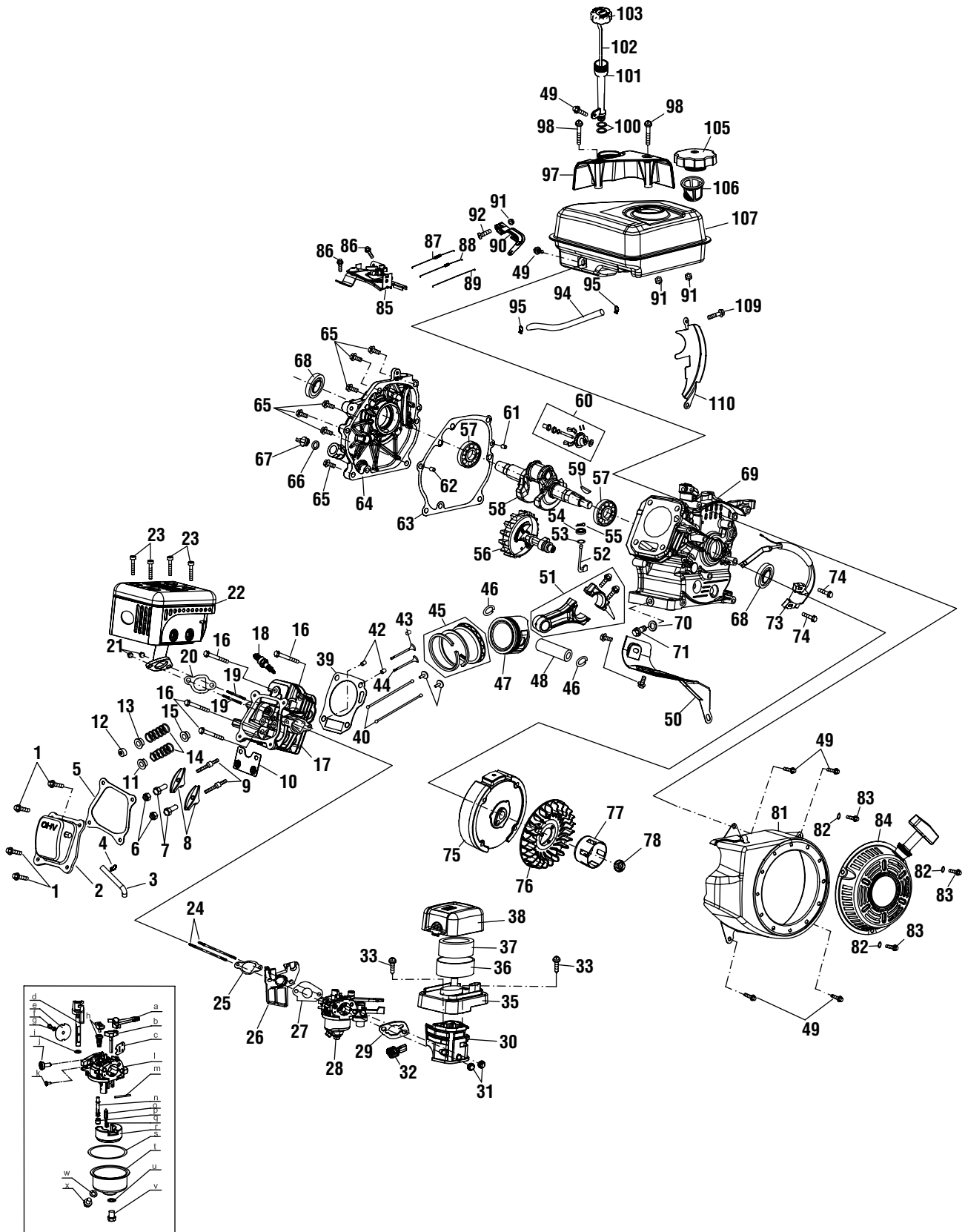
## Craftsman Tiller — Model No. 247.29934

Ref. No.	Part No.	Description
1	986-0091	Chain Case Assembly
2	642-0002-0637	Inner Tine Assembly, RH
3	642-0003-0637	Inner Tine Assembly, LH
4	642-0004-0637	Outer Tine Assembly, RH
5	642-0005-0637	Outer Tine Assembly, LH
6	911-0415	Clevis Pin, .375 x 1.75
7	714-04043	Bow Tie Cotter Pin
8	710-0599	Screw, 1/4-20 x 0.500
9	711-0919	Bolt, Belt Cover
10	712-0392	Nut, 1/4-28, Lock
11	712-3004A	Nut, 5/16-18, Flange Lock
12	936-3020	Flat Washer, .271 x .630 x .065
13	738-0930	Shoulder Screw, .560 x .165 5/16-18
14	786-0056-0721	Belt Cover
15	710-3008	Hex Head Screw, 5/16-18 x .75
16	712-04063	Nut, 5/16-18, Flange Lock
17	786-0043A-0721	Tine Shield
18	786-0053-0637	Bracket, Tine Shield
19	686-0088	Idler Bracket Assembly
20	710-0189	Hex Head Screw, 5/16-18 x 3.00
21	710-0237	Hex Head Screw, 5/16-24 x .625
22	710-1039	Hex Head Screw, 3/8-24 x 1.00

Ref. No.	Part No.	Description
23	710-3005	Hex Head Screw, 3/8-16 x 1.25
24	711-1036A	Hex Nut, 5/16-18
25	712-0266A	Jamlock Nut, 3/8-16
26	712-3029	Nut, 1/2-20, Jam
27	736-0112	Washer, .531 x 1.62 x .045
28	936-0119	Lock Washer, 5/16
29	736-0242	Bell Washer, .340 x .872 x .060
30	736-0312	Flat Washer, 1.26 x 1.87 x .150
31	936-0452	Bell Washer, .396 x 1.140 x .095
32	946-0918	Forward Clutch Cable
33	948-0350	Pulley Adaptor
34	950-0892	Spacer, .64 ID x 2.4
35	954-0428	Belt, 4L x 41.9 LG
36	756-0313	Pulley 1.88 OD
37	756-0585	Pulley 6.00 OD
38	756-0971	Inner Engine Pulley
39	756-0972	Outer Engine Pulley
40	786-0039B-0637	Belt Keeper Bracket
41	786-0129-0637	Cable Guide Bracket
42	786-0144-0637	Idler Bracket
43	786-0149	Belt Keeper

# PARTS LIST

Craftsman Engine Model ZS170-V0A For Model 247.29934



# PARTS LIST

## Craftsman Engine Model ZS170-V0A For Model 247.29934

Ref.	Part No.	Description
1	951-11012	Bolt
2	951-11054A	Valve Cover
3	731-07059	Breather Hose
4	726-04101	Breather Hose Clamp
5	951-11565	Valve Cover Gasket
6	751-11124	Nut, Pivot Locking
7	751-11123	Valve Adjusting Nut
9	710-04902	Rocker Arm Stud
16	710-05100	Cylinder Head Bolt
18	951-10292	Spark Plug
19	710-04911	Muffler Stud
21	712-04214	Nut
22	951-11590	Muffler Assembly
23	710-05002	Bolt
24	710-05101	Carburetor Stud
25	951-11567	Carburetor Insulator Gasket
26	951-11568	Carburetor Insulator
27	951-11569	Carburetor Gasket
29	951-11571	Carburetor Gasket Plate
30	951-10806	Air Cleaner Housing
31	712-04213	Nut
32	951-11067	Throttle Control Knob
33	710-05102	Self-Tapping Bolt
39	951-11572	Cylinder Head Gasket
42	715-04090	Dowel Pin
45	951-11253	Piston Ring Set
49	710-04915	Bolt
50	951-11113	Air Shield
51	951-11573	Connecting Rod Assembly
52	951-11356	Governor Arm Shaft
53	736-04461	Governor Shaft O-Ring
54	951-11574	Governor Seal
55	714-04078	Cotter Pin
56	951-11575	Camshaft Assembly
57	951-11369	Radial Ball Bearing
59	951-10307	Flywheel Key
60	951-11576	Governor Assembly
61	715-04092	Dowel Pin, 7 x 14
62	715-04089	Dowel Pin, 9 x 14
63	951-11371	Crankcase Cover Gasket

Ref.	Part No.	Description
65	710-04932	Bolt
66	951-11577	O-Ring
68	951-11578	Oil Seal
70	736-04440	Oil Drain Plug Washer
71	710-04906	Oil Drain Plug
73	951-10792	Ignition Coil
74	710-04919	Bolt
75	951-10805	Flywheel
76	951-10934	Cooling Fan
77	951-10911	Starter Cup
78	712-04209	Nut
81	951-11583	Blower Housing
82	736-04455	Washer
83	710-04914	Bolt
84	951-10790	Recoil Starter Assembly
85	951-11584	Primer Bracket
86	710-05103	Bolt
87	951-11585	Governor Spring
88	951-10664	Throttle Linkage Spring
89	951-10665	Throttle Linkage
90	951-11106	Governor Arm
91	712-04212	Nut
92	710-04908	Governor Arm Bolt
97	951-10662	Engine/Dipstick Cover
98	710-04905	Bolt
100	951-11380	O-Ring
101	951-10656	Dipstick Tube
106	951-10652	Fuel Filter
107	951-10796	Fuel Tank
109	710-04918	Bolt
110	951-11109	Blower Housing Shield
a	951-11177	Choke Control Lever
s	951-11589	Fuel Bowl Gasket
u	710-04904	Fuel Bowl Bolt Gasket
v	710-04945	Fuel Bowl Mounting Bolt
w	951-11349	Fuel Drain Plug Gasket
x	710-04903	Fuel Drain Bolt
—	951-10829	Spark Arrestor (Not Shown)
—	951-10651	Fuel Tank Nipple (Not Shown)

# PARTS LIST

## Craftsman Engine Model ZS170-V0A For Model 247.29934

Ref.	Part No.	Description	Qty.	Ref.	Part No.	Description	Qty.
—	951-10798A	Short Block	—	—	951-10799	Cylinder Head Assembly	—
5	951-11565	Valve Cover Gasket	1	5	951-11565	Valve Cover Gasket	1
20	—	Exhaust Pipe Gasket	1	7	751-11123	Valve Adjusting Nut	2
25	951-11567	Carburetor Insulator Gasket	1	8	—	Rocker Arm	2
26	951-11568	Carburetor Insulator	1	9	710-04902	Rocker Arm Stud	2
29	951-11571	Carburetor Gasket Plate	1	10	—	Push Rod Guide	1
39	951-11572	Cylinder Head Gasket	1	11	—	Valve Spring Retainer-Intake	1
41	—	Valve Lifter	2	12	—	Exhaust Valve Adjustor	1
45	951-11253	Piston Ring Set	1	13	—	Valve Spring Retainer-Exhaust	1
46	—	Piston Pin Clip	2	14	—	Valve Spring	2
47	—	Piston	1	17	—	Cylinder Head	1
48	—	Piston Pin	1	20	—	Exhaust Pipe Gasket	1
51	951-11573	Connecting Rod Assembly	1	25	951-11567	Carburetor Insulator Gasket	1
52	951-11356	Governor Arm Shaft	1	26	951-11568	Carburetor Insulator	1
53	736-04461	Governor Shaft O-Ring	1	39	951-11572	Cylinder Head Gasket	1
54	951-11574	Governor Seal	1	42	715-04090	Dowel Pin	2
55	714-04078	Cotter Pin	1	43	—	Exhaust Valve	1
56	951-11575	Camshaft Assembly	1	44	—	Intake Valve	1
57	951-11369	Radial Ball Bearing	2	—	951-11586	Crankcase Cover Kit	—
58	—	Crankshaft Assembly	1	57	951-11369	Radial Ball Bearing	1
60	951-11576	Governor Assembly	1	63	951-11371	Crankcase Cover Gasket	1
61	715-04092	Dowel Pin, 7 x 14	1	64	—	Crankcase Cover	1
62	715-04089	Dowel Pin, 9 x 14	1	65	710-04932	Bolt	7
63	951-11371	Crankcase Cover Gasket	1	68	951-11578	Oil Seal	1
64	—	Crankcase Cover	1	—	951-11588	Crankcase Kit	—
65	710-04932	Bolt	7	52	951-11356	Governor Arm Shaft	1
66	951-11577	O-Ring	1	53	736-04461	Governor Shaft O-Ring	1
67	—	Oil Filler Plug	1	54	951-11574	Governor Seal	1
68	951-11578	Oil Seal	2	55	714-04078	Cotter Pin	1
69	—	Crankcase Complete	1	57	951-11369	Radial Ball Bearing	1
70	736-04440	Oil Drain Plug Washer	2	68	951-11578	Oil Seal	1
71	710-04906	Oil Drain Plug	2	69	—	Crankcase Complete	1
—	951-11587	Crankshaft Kit	—	—	951-10801A	Gasket Kit - External	—
57	951-11369	Radial Ball Bearing	2	20	—	Exhaust Pipe Gasket	1
58	—	Crankshaft Assembly	1	25	951-11567	Carburetor Insulator Gasket	1
59	951-10307	Flywheel Key	1	27	951-11569	Carburetor Gasket	1
63	951-11371	Crankcase Cover Gasket	1	66	951-11577	O-Ring	1
68	951-11578	Oil Seal	2	70	736-04440	Oil Drain Plug Washer	1
—	951-11063A	Valve Cover Gasket Kit	—	—	951-10818	Air Cleaner Housing Assembly	—
2	951-11054A	Valve Cover	1	35	—	Lower Housing	1
5	951-11565	Valve Cover Gasket	1	38	—	Upper Housing	1

# PARTS LIST

## Craftsman Engine Model ZS170-V0A For Model 247.29934

Ref.	Part No.	Description	Qty.	Ref.	Part No.	Description	Qty.
28	951-10797	Carburetor Assembly	—	—	951-10647	Valve Kit	—
a	951-11177	Choke Control Lever	1	43	—	Exhaust Valve	1
b	—	Choke Shaft	1	44	—	Intake Valve	1
c	—	Choke Plate	1	—	951-10655	Dipstick Assembly	—
d	—	Throttle Shaft	1	102	—	Dipstick Gauge	1
e	—	Throttle Plate	1	103	—	Dipstick Cap	1
f	—	Screw	1	—	951-10669	Oil Fill Plug Assembly	—
g	—	Lock Washer	1	66	951-11577	O-Ring	1
h	—	Idle Jet Assembly	1	67	—	Oil Filler Plug	1
i	—	Throttle Plate Gasket	1	—	951-10650	Fuel Line Kit	—
j	—	Idle Speed Adjusting Screw	1	94	—	Fuel Hose	1
k	—	Mixture Screw	1	95	—	Hose Clamp	2
l	—	Carburetor Body	1	—	951-10657	Muffler Stud Assembly	—
m	—	Float Pin	1	19	710-04911	Muffler Stud	2
n	—	Main Nozzle	1	—	951-10819	Cylinder Head Service Kit	—
o	—	Needle Valve (Float)	1	5	951-11565	Valve Cover Gasket	1
p	—	Main Jet	1	15	—	Valve Seal	1
q	—	Needle Valve Spring	1	16	710-05100	Cylinder Head Bolt	4
r	—	Float	1	39	951-11572	Cylinder Head Gasket	1
s	951-11589	Fuel Bowl Gasket	1	—	951-10794	Air Cleaner	—
t	—	Fuel Bowl	1	36	—	Air Cleaner Foam Wrap	1
u	710-04904	Fuel Bowl Bolt Gasket	1	37	—	Air Cleaner Element	1
v	710-04945	Fuel Bowl Mounting Bolt	1	—	951-10802A	Gasket Kit - Complete	—
w	951-11349	Fuel Drain Plug Gasket	1	5	951-11565	Valve Cover Gasket	1
x	710-04903	Fuel Drain Bolt	1	20	—	Exhaust Pipe Gasket	1
—	951-10800A	Carburetor Kit - Major	—	25	951-11567	Carburetor Insulator Gasket	1
a	951-11177	Choke Control Lever	1	26	951-11568	Carburetor Insulator	1
h	—	Idle Jet Assembly	1	27	951-11569	Carburetor Gasket	1
i	—	Throttle Plate Gasket	1	29	951-11571	Carburetor Gasket Plate	1
j	—	Idle Speed Adjusting Screw	1	39	951-11572	Cylinder Head Gasket	1
m	—	Float Pin	1	53	736-04461	Governor Shaft O-Ring	1
n	—	Main Nozzle	1	63	951-11371	Crankcase Cover Gasket	1
o	—	Needle Valve (Float)	1	66	951-11577	O-Ring	1
p	—	Main Jet	1	68	951-11578	Oil Seal	2
q	—	Needle Valve Spring	1	70	736-04440	Oil Drain Plug Washer	1
r	—	Float	1	105	951-10917	Fuel Cap	—
s	951-11589	Fuel Bowl Gasket	1	—	—	Gasket (Not Shown)	1
u	710-04904	Fuel Bowl Bolt Gasket	1	—	—	Gasket Retainer (Not Shown)	1
w	951-11349	Fuel Drain Plug Gasket	1	—	951-10826	Recoil Spring & Pulley Assembly	—
—	951-10648	Push Rod Kit	—	—	—	Starter Pulley (Not Shown)	1
40	—	Push Rod	2	—	—	Recoil Spring (Not Shown)	1

# Parts List

Craftsman Tiller Model No. 247.29934

777D14195



777I23259



777I23174



777S33498

**WARNING**  
**TO AVOID SERIOUS INJURY**

Read the operator's manual. Know location and functions of all controls. Keep all safety devices and shields in place and working. Never allow children or un instructed adults to operate tiller. Shut off engine before unclogging tines or making repairs. Keep bystanders away from machine. Keep away from rotating parts. Use extreme caution when reversing or pulling the machine towards you.

**KEEP AWAY FROM ROTATING TINES. ROTATING TINES WILL CAUSE INJURY.**

**WARNING**

Operation Of This Equipment May Create Sparks That Can Start Fires Around Dry Vegetation. A Spark Arrestor May Be Required. The Operator Should Contact Local Fire Agencies For Laws Or Regulations To Fire Prevention Requirements.

777D14194



777D13770



777D14196



777I20358

**WHEN STARTING ENGINE PLACE FREE HAND HERE**

777S33382

**WARNING**

Read and follow Operating Instructions before running engine.  
 Lire entièrement les instructions d'utilisation avant de faire demarrer le moteur.

Gasoline is flammable. Allow engine to cool at least 2 minutes before refueling.  
 L'essence est inflammable. Laissez le moteur refroidir au moins 2 minutes avant de faire le plein.

Engines emit carbon monoxide. DO NOT run in enclosed area.  
 Les moteurs produisent du monoxyde de carbone, ne pas faire fonctionner le moteur dans un local fermé.

777I22502

