



DigitTech

NOW YOU'RE GROOVING!

You just got the new MonoNeon Signature Whammy pedal! Our most expressive Whammy ever. DigiTech strives to make our pedals as “Plug and Play” as possible and we understand that sitting down and reading manuals can be as much fun as listening to elevator music on infinite repeat. Still, your manual might introduce you to some options and settings your new MonoNeon Signature Whammy Pedal offers. So, gaze at the manual for a while and learn all you can about the awesome MonoNeon Signature Whammy pedal.

A HUGE congratulations from all of us at DigiTech!
Express yourself!

CONTENTS

Welcome	pg	2
Guided Tour	pg	4
Connections	pg	7
Effects	pg	8
MIDI	pg	12
Calibration	pg	16
Info	pg	17

MonoNeon Whammy Features:

- 3 Octave pitch bend (Hypersonic)
- Dry + 1 octave up to 2 octaves up bend
- Dry + octave down to octave up bend
- Dry + 2 octaves down to 1 octave down bend
- Custom MonoNeon Colors
- Newly designed Detune setting

Included Items:

- MonoNeon Whammy Pedal
- Power Supply
- User's Manual
- 2 Guitar Case Stickers
- Warranty Registration Information Card
- Special MonoNeon Customizing Kit
 - Gaffer's Tape - Neon Yellow & Neon Orange
 - Mini Permanent Marker

If anything is missing, please contact the Mothership at digitech.com at once. If nothing is missing, visit us anyway to check out our other products.

Hey y'all, it's MonoNeon here. I'm so excited to share with you my latest junt...the new DiGiTech MonoNeon Signature Whammy pedal!! It was a blast collaborating with the guys at DiGiTech... creating a twist aesthetically and sonically on the classic Whammy pedal with a ton of new features that I love so much, mane...!!

MONO
NEON



4. Whammy LEDs

One of these ten LEDs will light indicating which Whammy effect is selected. Whammy effects let you bend the pitch of your guitar/bass up or down to the amount of pitch shifting selected. Ten settings to choose from give a wide range of options.

5. Hypersonic LED

The Hypersonic LED will light when the brand new Hypersonic effect is selected. The Expression Pedal controls let you pitch shift up 3 full octaves. Dog whistle territory!

6. Detune LED

The Detune LED will light when the Detune effect is selected. The Expression Pedal controls the amount of Detune signal mixed with the dry signal.

7. Octaver

One of these three LEDs will light when an Octaver effect is selected. Octaver effects work well with playing chords and add octaves above or below to your original signal. In addition to giving you tonal variety, the Whammy Octaver also allows you to shift the octave for additional expressive flair.

8. Harmony LEDs

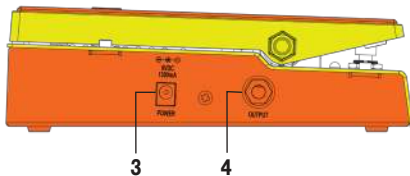
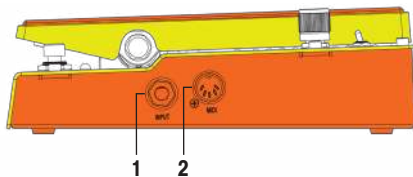
One of these six LEDs will light when a Harmony effect is selected. Harmony effects have dry signal added to the pitch-shifted signal to create chordal harmony that you can shift and bend to a second chordal harmony.

9. Status LED

This green LED lights to indicate the effect is on. When the effect is bypassed, this LED will be off.

10. Effect On/Off Switch

This footswitch switch turns the Whammy pedal effect on and off. When off unit is in hardware bypass.



1. Instrument Input

Connect your guitar, bass, or any other instrument to this jack.

2. MIDI Input

Connect an external MIDI control device to this jack for the purpose of controlling the Whammy remotely.

3. Power Input

Connect the power supply to this jack. For guaranteed proper operation do not use any power supply other than the included PS0913DC-04 power supply.

4. Output Jack

Connect a cable from this jack to another pedal input or to the input of an amplifier.

CONNECTIONS

The Whammy pedal is easy to set up and use.

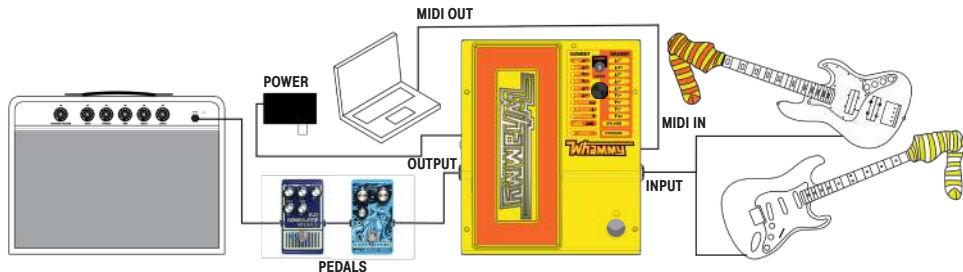
Follow these steps to get set up and get creating.

1. Connect your instrument to the Whammy's **Input Jack**.
2. Connect from the Whammy's **Output Jack** to your favorite pedals, or to your amplifier.
3. If using an external MIDI device for control, connect from the MIDI out of the MIDI device to the **MIDI Input** on the Whammy.

4. Connect the included power supply to an AC outlet and the other end to the Whammy's **Power Input**.

5. Turn on your amp and adjust the volume to the desired level.

6. Use the **Effect On/Off Footswitch** to enable the effect, push the Expression Pedal to fully forward (toe down), then rotate the **Selector Knob** to select the desired effect.



EFFECTS Whammy

Whammy Effects

This group of effects will bend your incoming signal either up or down depending upon the effect setting you have chosen. As the Expression Pedal is rocked back and forth, the signal will bend from the original input pitch (toe up) to the pitch specified by the selected effect setting (toe down). Only the shifted note will be heard.



WHAMMY
PRESETS

2 OCT UP

Bends input note two octaves up.

1 OCT UP

Bends input note one octave up.

5TH UP

Bends input note 7 semitones (5th interval) up.

4TH UP

Bends input note 5 semitones (4th interval) up.

2ND UP

Bends input note 2 semitones (2nd interval) up.

2ND DOWN

Bends input note 2 semitones (2nd interval) down.

4TH DOWN

Bends input note 5 semitones (4th interval) down.

5TH DOWN

Bends input note 7 semitones (5th interval) down.

1 OCT DOWN

Bends input note one octave down.

DIVE BOMB

Bends input note three octaves down.

EFFECTS Detune & Hypersonic



Detune Effect

This effect mixes your original signal with a moderately detuned copy of your signal creating a thick layered effect. As the Expression Pedal is rocked back and forth, the level of this detuned signal is changed. With the pedal in the toe up position, only the original dry signal is heard. As the pedal is rocked forward, more of the detuned signal is mixed with the dry signal.

Hypersonic Effect

This effect will bend your incoming signal 3 octaves up. As the Expression Pedal is rocked back and forth, the signal will bend from the original input pitch (toe up) all the way to the 3 Octaves up pitch effect setting (toe down). Whew!

EFFECTS Harmony

Harmony Effects

This group of effects adds a pitch-shifted harmony to your incoming signal. Both the harmony note and the input signal are mixed together as if two instruments were playing simultaneously. As you rock the expression pedal back and forth, the harmony note bends between two intervals specified by the selected effect setting, but the input signal remains unchanged.

HARMONY
PRESETS



4TH UP / 5TH UP

Bends the harmony between a fourth (toe up) and a fifth (toe down) above the input note.

3RD UP / 4TH UP

Bends the harmony between a third (toe up) and a fourth (toe down) above the input note.

5TH DOWN / 4TH DOWN

Bends the harmony between a fifth (toe up) and a fourth (toe down) below the input note.

6TH DOWN / 5TH DOWN

Bends the harmony between a sixth (toe up) and a fifth (toe down) below the input note.

4TH DOWN / 5TH UP

Bends the harmony between a fourth below (toe up) and a fifth (toe down) above the input note.

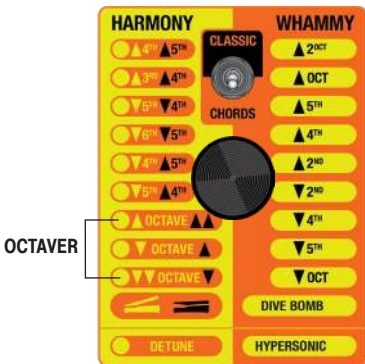
5TH DOWN / 4TH UP

Bends the harmony between a fifth below (toe up) and a fourth (toe down) above the input note.

EFFECTS Octaver

Octaver Effects

These effects will add an octave-shifted signal to your incoming signal. As the Expression Pedal is rocked back and forth you can morph between two different Octaver tones. This effect works well with chords.



OCT UP / 2 OCT UP

Morph between a Dry+ Octave up tone to a Dry+ 2 Octave up tone.

OCT DOWN / OCT UP

Morph between a Dry+ Octave Down tone to a Dry+ Octave up tone.

2 OCT DOWN / OCT DOWN

Morph between a Dry+ 2-Octave Drop to a Dry+ 1-Octave Drop tone.



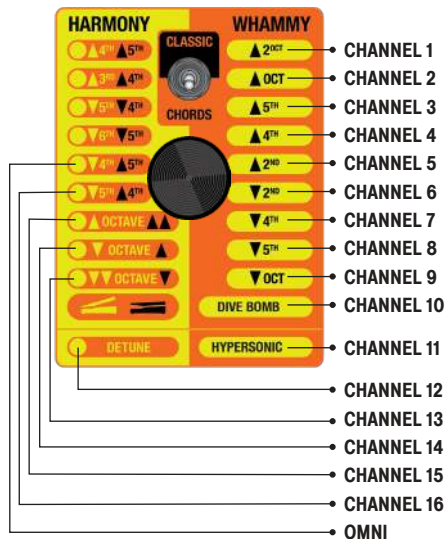
MIDI Channel Selection

The Whammy features a MIDI Input for receiving incoming MIDI data. MIDI messages can select a Whammy effect and set whether the effect is in an active or bypassed state. MIDI CC messages can then be used to control the Whammy Expression Pedal position.

MIDI Channel

The Whammy can receive MIDI messages on any, or all MIDI channels. The following steps outline the procedure for accessing or changing the MIDI channel.

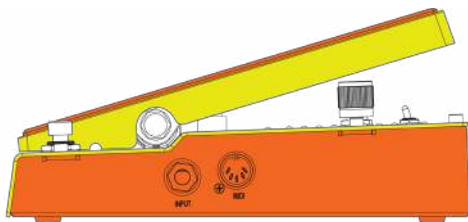
1. Disconnect the power from the Whammy.
2. Press and hold the Effect On/Off Footswitch while reconnecting the power. One of the Effect LEDs will begin to flash indicating the current MIDI channel.
3. Using the reference diagram, rotate the Selector Knob to select the desired MIDI channel.
4. Press the Effect On/Off Footswitch again to exit the MIDI set up menu.



MIDI Continuous Control

Using MIDI continuous control commands, the Whammy's Expression Pedal position can be remotely controlled. MIDI CC11 adjusts the Expression Pedal position. A value of 0 on MIDI CC11 corresponds to a toe up position and a value of 127 corresponds to a toe down position.

The MIDI continuous control commands will override the physical position of the pedal.



TOE UP



TOE DOWN

MIDI PROGRAM CHANGE MAPPING - Classic Mode

The Whammy uses MIDI Program Change commands for effect selection. Effects can be selected in either an active or bypassed state. The following illustrations show the MIDI Program Change mappings for Classic mode and Chords mode.

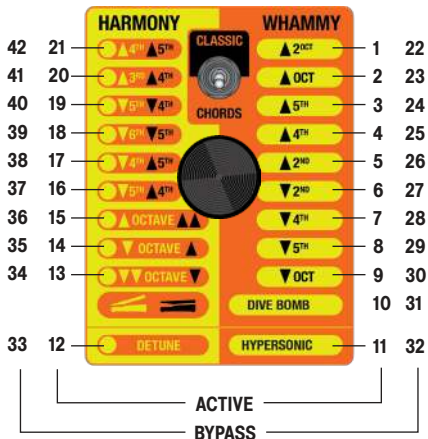
CLASSIC MODE

When set to Classic Mode, the following illustration outlines the Program Change commands recognized by the Whammy and the corresponding effect setting and its status.

MIDI program changes override the physical position of the classic/chords switch.

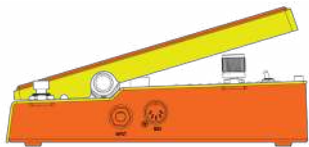


MIDI PROGRAM CHANGE NO.



CALIBRATION

In the unlikely event that the Expression Pedal does not respond properly or that the note does not bend or return to the correct pitch, it may need to be re-calibrated. The following steps outline the procedure for the Expression Pedal re-calibration.



TOE UP



TOE DOWN

1. Disconnect the power from the Whammy pedal.
2. Press and hold the Whammy Effect Footswitch while reconnecting the power. This enables MIDI and Calibration Setup. Wait for one of the Whammy Effect LEDs to begin flashing (indicating the currently selected MIDI channel) then release the footswitch.
3. Rock the Expression Pedal fully forward (toe down) and fully back (toe up) at least two times. The four upper left Harmony LEDs will light back and forth (from 6TH DN/5TH DN to 4TH UP/5TH UP) as the pedal is rocked indicating the pedal is calibrating.
4. When finished, press the Whammy Effect Footswitch again to exit the MIDI and Calibration setup and return to normal operation.

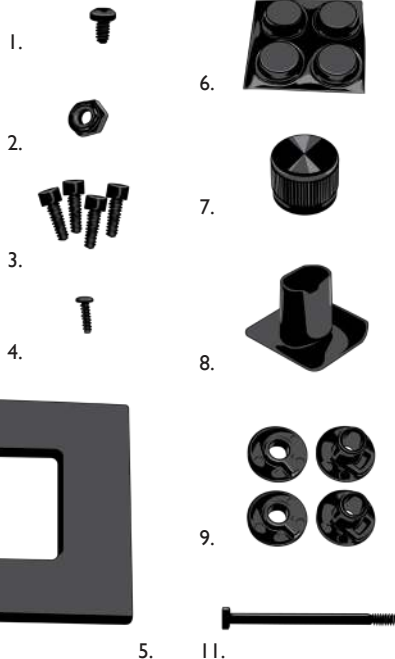
INFO Specifications

Instrument Input Type:	Unbalanced 1/4" TS phone jack
Max Input Level:	+5 dBu
Input Impedance:	1 M Ω
MIDI Input:	5-Pin DIN
Output Type:	Unbalanced 1/4" TS phone jack
Max Output Level:	+10 dBu
Output Impedance:	1 k Ω
Frequency Response:	20 Hz to 20 kHz
Signal to Noise Ratio:	>105 dB (A-weighted): ref = max level, 22 kHz bandwidth
THD:	0.004% @ 1 kHz; ref = 1 dBu w/ unity gain
Sample Rate:	44.1 kHz
A/D Conversion:	24-bit
D/A Conversion:	24-bit
Power Consumption:	2.4 W (265 mA @ 9VDC)
Power Requirements:	9 VDC External Adapter (center negative)
Included Power Adapter:	PS0913DC (9V DC @ 1.3 A) center negative
Pedal Dimensions:	6.5" (W) x 7.75" (D) x 2.5" (H)
Shipping Weight:	3.8 lbs.

INFO

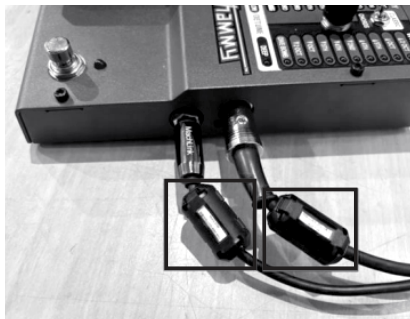
We know the road can be an unforgiving place and hard on your gear. Replacement parts are available from www.digitech.com.

- 1. SCRW-0102 Grounding Bracket Screw
- 2. NUTT-0100 Treadle Nut
- 3. SCRW-0101 Chassis Screw
- 4. SCRW-0100 MIDI Screw
- 5. MCCA-0202 Antiskid Pad
- 6. FOOT-0100 Bumpons
- 7. KNOB-0100 Encoder Knob
- 8. MCCA-0200 Rubber Light Shield
- 9. PRRV-0100 Outer Treadle Shoulder
- 10. PRRV-0101 Inner Treadle Shoulder
- 11. BOLT-0100 Treadle Bolt



Electromagnetic Compatibility

To minimize potential electronic interference radiated to other electronic equipment, this product includes two clip-on ferrite cores that should be clamped around the INPUT and MIDI cables near the plug connectors as shown in the photo below.



Warning

For your protection, please read the following:

Important Safety Instructions

1. Read these instructions.
2. Keep these instructions.
3. Heed all warnings.
4. Do not use this apparatus near water.
5. Clean only with dry cloth.
6. Do not block any ventilation openings. Install in accordance with the manufacturer's instructions.
7. Do not install near any heat sources such as radiators, heat registers, stoves, or other apparatus (including amplifiers) that produce heat.
8. Protect the power cord from being walked on or pinched particularly at plugs, convenience receptacles, and the point where they exit from the apparatus.
9. Unplug this apparatus during lightning storms or when unused for long periods of time.
10. No user serviceable parts inside. Refer all servicing to qualified service personnel. Servicing is required when the apparatus has been damaged in any way, such as power-supply cord or plug is damaged, liquid has been spilled or objects have fallen into the apparatus, the apparatus has been exposed to rain or moisture, does not operate normally, or has been dropped.
11. **WARNING:** To reduce the risk of fire or electric shock, do not expose this apparatus to rain or moisture.
12. Refer to labels on the unit, including bottom cover, or other markings and pertinent information.



These symbols are internationally accepted symbols that warn of potential hazards with electrical products. The lightning flash means that there are dangerous voltages present within the unit. The exclamation point indicates that it is necessary for the user to refer to the owner's manual.

These symbols warn that there are no user serviceable parts inside the unit. Do not open the unit. Do not attempt to service the unit yourself. Refer all servicing to qualified personnel. Opening the chassis for any reason will void the manufacturer's warranty. Do not get the unit wet. If liquid is spilled on the unit, shut it off immediately and take it to a dealer for service.

Disconnect the unit during storms to prevent damage.

ELECTROMAGNETIC COMPATIBILITY

This device complies with part 15 of the FCC Rules and the Product Specifications noted on the Declaration of Conformity. Operation is subject to the following two conditions:

- this device may not cause harmful interference, and
- this device must accept any interference received, including interference that may cause undesired operation.

Operation of this unit within significant electromagnetic fields should be avoided.

- use only shielded interconnecting cables.



If you want to dispose this product, do not mix it with general household waste. There is a separate collection system for used electronic products in accordance with legislation that requires proper treatment, recovery and recycling.

Private household in the 25 member states of the EU, in Switzerland and Norway may return their used electronic products free of charge to designated collection facilities or to a retailer (if you purchase a similar new one).

For Countries not mentioned above, please contact your local authorities for a correct method of disposal.

By doing so you will ensure that your disposed product undergoes the necessary treatment, recovery and recycling and thus prevent potential negative effects on the environment and human health.

* DECLARATION OF CONFORMITY *

This declaration has been issued under the sole responsibility of the manufacturer. The object of the declaration is in conformity with the relevant Union harmonization Legislation. For convenience, additional non-EU declarations are included within this Declaration of Conformity.

Manufacturer:	DigiTech	DigiTech Headquarters
Address:	6132 S 380 W Murray, UT 84107 USA	59 Hwagok-ro 61gil, Gangseo-gu Seoul 07590 Republic of Korea

Declares that this product

Product SKU Number:	WHAMMYMNV-04
Product Name:	DigiTech Whammy MonoNeon Edition
Product Options:	All (requires an approved DigiTech Class II power adapter or equivalent that conforms to the requirements herein)

conforms to the following standards, specifications, and initiatives:

Safety:	IEC 62368-1, 2 nd & 3 rd Editions DOD SD~1995 JL FBC
EMC:	BS / EN 55032:2015+A1:2020 BS / EN 50130-4:2011+A1:2014 BS / EN 55035:2017+A1:2020 BS / EN IEC 61000-3-2:2019 BS / EN 61000-3-3:2013+A1:2019 EN 61000-3-3:2013+A1:2019 EN 61000-4-2:2009 EN 61000-4-3:2006+A1:2008+A2:2010 EN 61000-4-4:2012 EN 61000-4-5:2014 EN 61000-4-6:2014 EN 61000-4-11:2004 FCC Part 15 Subpart B / ANSI C63.4-2014 ICES-003 Issue 7 / ANSI C63.4a-2017 EN IEC 63000:2018 DOD 2023-CFEI

RoHS:
R&D:

Supplementary Information:

The product herewith complies with the requirements of the:

- Low Voltage Directive 2014/35/EU
- EMC Directive 2014/30/EU
- UK Statutory Instruments requirements, 2016 No. 1091, Electromagnetic Compatibility Regulations 2016
- RoHS Directive (EU) 2015/863, amending Annex II to Directive 2011/65/EU
- WEEE Directive 2012/19/EU
- ErP Directive 2009/125/EC, amended by energy efficiency Directive 2012/27/EU, and ecodesign Regulation (EU) 2019/1782

Roger T. Johnsen



VP of Engineering
October 31, 2024

DigiTech
6132 S 380 W
Murray, UT 84107
USA

Contact: Your local DigiTech sales office, or visit the DigiTech website at www.digitech.com, or contact:

CORTEK Corp.
59 Hwagok-ro 61gil, Gangseo-gu
Seoul 07590
Republic of Korea
support@digitech.com





Warranty

We at **DigiTech®** are very proud of our products and back up each one we sell with the following warranty:

1. Please register online at www.digitech.com within ten days of purchase to validate this warranty. This warranty is valid only in the United States.
2. DigiTech warrants this product, when purchased new from an authorized U.S. DigiTech dealer and used solely within the U.S., to be free from defects in materials and workmanship under normal use and service. This warranty is valid to the original purchaser only and is non-transferable.
3. DigiTech liability under this warranty is limited to repairing or replacing defective materials that show evidence of defect, provided the product is returned to an authorized DigiTech location, where all parts and labor will be covered up to a period of one year from date of purchase. The company shall not be liable for any consequential damage as a result of the product's use in any circuit or assembly. Proof-of-purchase is considered to be the responsibility of the consumer. A copy of the original purchase receipt must be provided
4. for any warranty service.
DigiTech reserves the right to make changes in design, or make additions to, or improvements upon this product without incurring
5. any obligation to install the same on products previously manufactured.
The consumer forfeits the benefits of this warranty if the product's main assembly has been tampered with by anyone other than a
6. certified DigiTech technician (not including user replacement of the battery) or, if the product is used with voltages outside the range specified by DigiTech.
The foregoing is in lieu of all other warranties, expressed or implied, and DigiTech neither assumes nor authorizes any person to
7. assume any obligation or liability in connection with the sale of this product. In no event shall DigiTech or its dealers be liable for special or consequential damages or from any delay in the performance of this warranty due to causes beyond their control.

NOTE: The information contained in this manual is subject to change at any time without notification. Some information contained in this manual may also be inaccurate due to undocumented changes in the product since this version of the manual was completed. The information contained in this version of the owner's manual supersedes all previous versions.

SPECIAL THANKS

MonoNeon

Matt Anderson

Logan Schaal

Jim

Roger

Brent

Brittany

Kiki's Art Service

Isaac

Henry

Jonni

artistic inspiration and drive

artist management and production

artist photography

ideas, drive, and hypersonic DSP, etc.

ideas, parts, and more parts

code and recode

ideas, stickers, manual

musician marginals :-)

production test

giftbox design

videos, demos, and feedback

MONO
NEON

DigitTech



MONO NEON ♡

Copyright © 2024
LITP-0004 Rev B



ISBN FS498-0001JB



DigiTech
6132 S 380 W
Murray, UT 84107, USA
www.digitech.com