



WIRELESS 150N USB 2.0 ADAPTER



Quick Installation Guide
DN-7042-1 Rev.3

Driver Installation

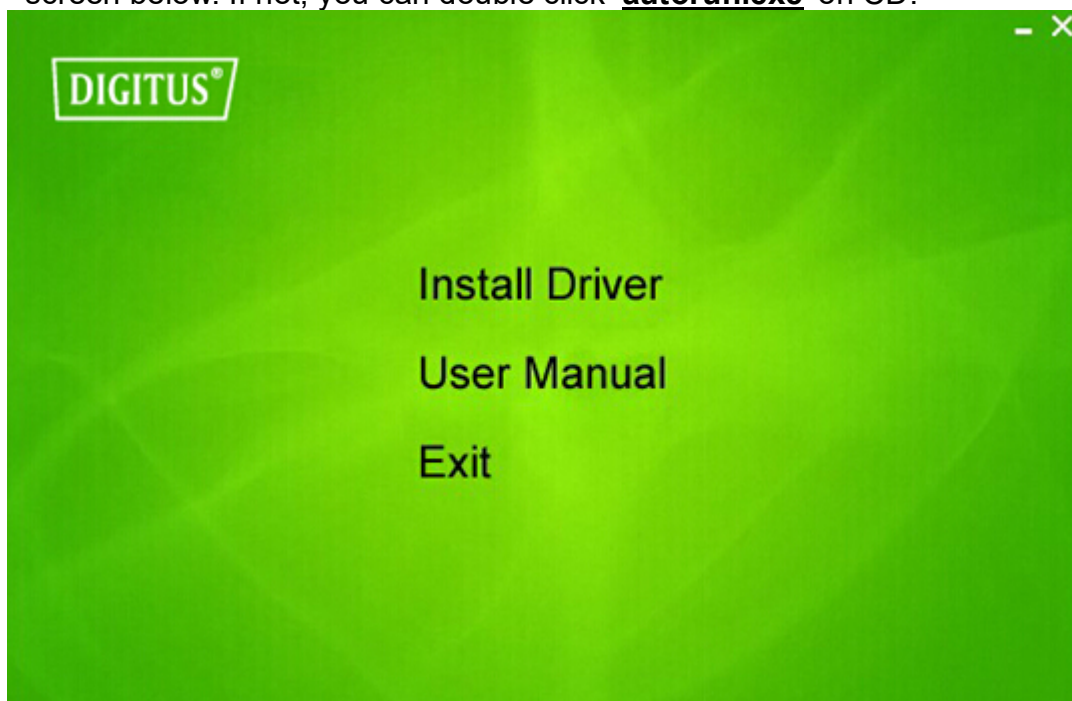
Please follow the following instructions to install your new wireless USB Adapter:

1. Insert the USB wireless network card into an empty USB 2.0 port of your computer, when computer is switched on. Never use force to insert the card, if you feel it's stuck, flip the card over and try again.
2. The following message will appear on your computer, click '**Cancel / Close**'.

Windows 7/8/10



3. Insert the driver CD into your CD-ROM. You can see auto run screen below. If not, you can double click '**autorun.exe**' on CD.



Click '**Install Driver**' to start the installation procedure

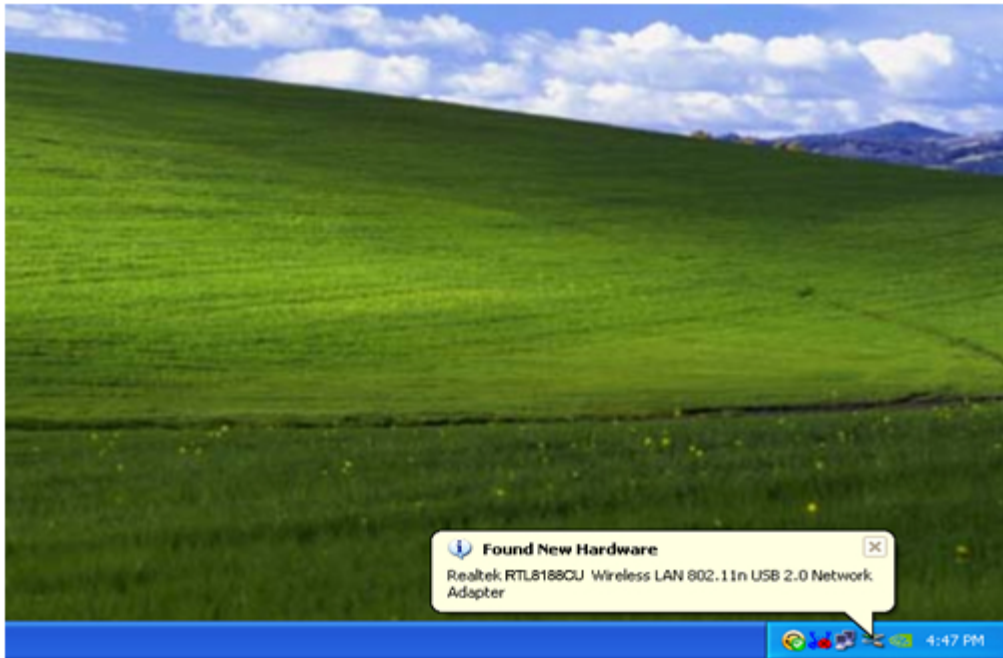
4. Installation descriptions shown. Click '**Next**' to continue



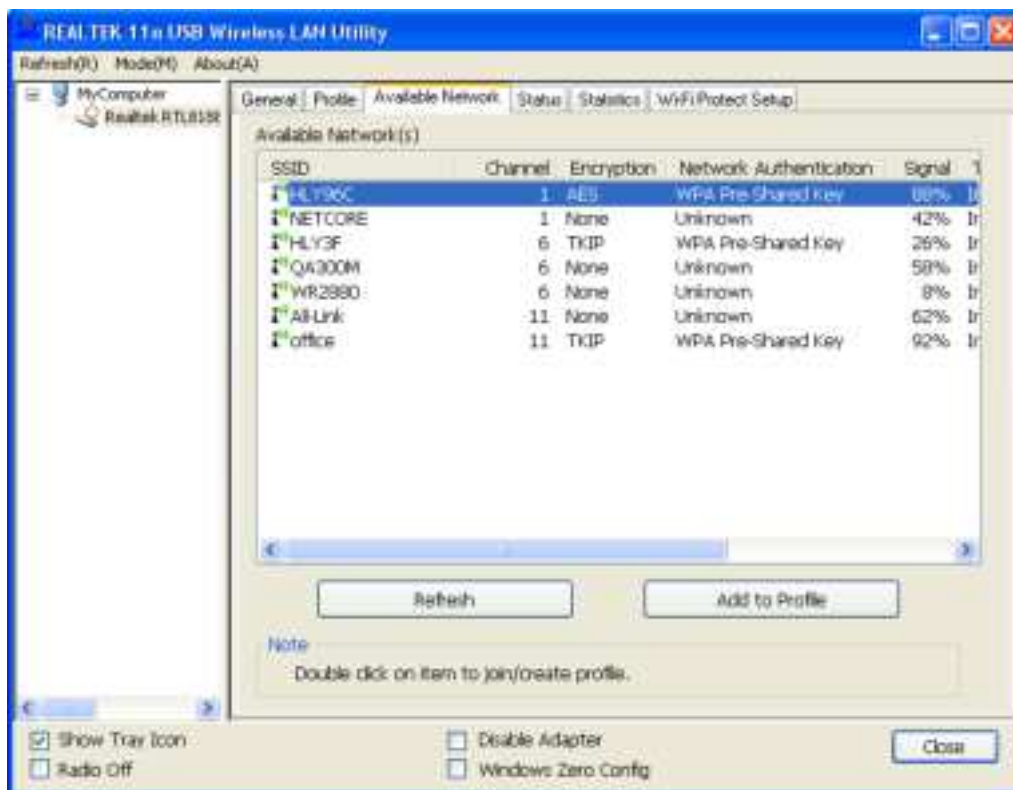
5. Once the installation is finished the computer will be asked to reboot. You can click '**Finish**' and reboot the computer to finish the installation of driver files



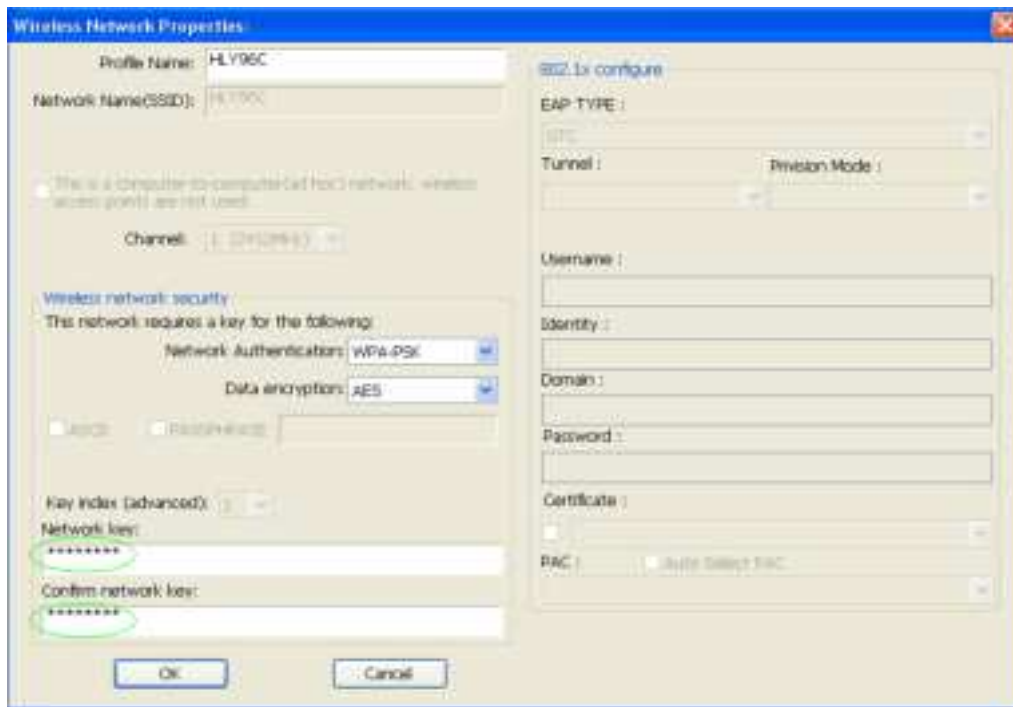
6. Insert the USB wireless network card into an USB 2.0 port of your computer, the system will find the new hardware and will install the drivers automatically.



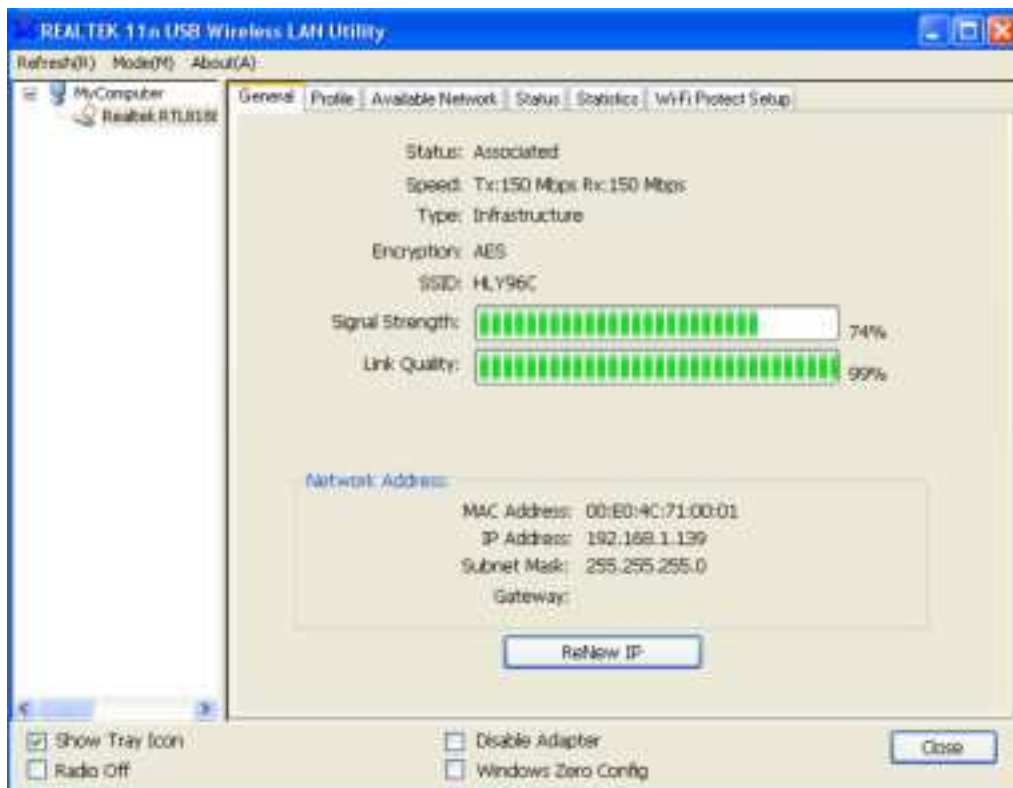
7. After finishing driver installation, click adapter utility from your taskbar or programs folder. Click "**available networks**", select the wireless access point you would like to connect and press "**Add to Profile**" button.



8. Fill in the security information if any requirement, and then click “OK” to connect the wireless network.



9. Connected successfully. It will show the status screen.



DN-7042-1

Technical Description

Frequency Range: 2412MHz-2472MHz for 802.11b, g, n/HT20

2422MHz-2462MHz for 802.11n/HT40

Transmit Power: < 20 dBm EIRP

Hardware Version: V 1.0

Software Version: 1030.38

The manual content may be changed. Please also refer to the latest version on the web shop.

Hereby Assmann Electronic GmbH, declares that the Declaration of Conformity is part of the shipping content. If the Declaration of Conformity is missing, you can request it by post under the below mentioned manufacturer address.

www.assmann.com

Assmann Electronic GmbH

Auf dem Schüffel 3

58513 Lüdenscheid

Germany

