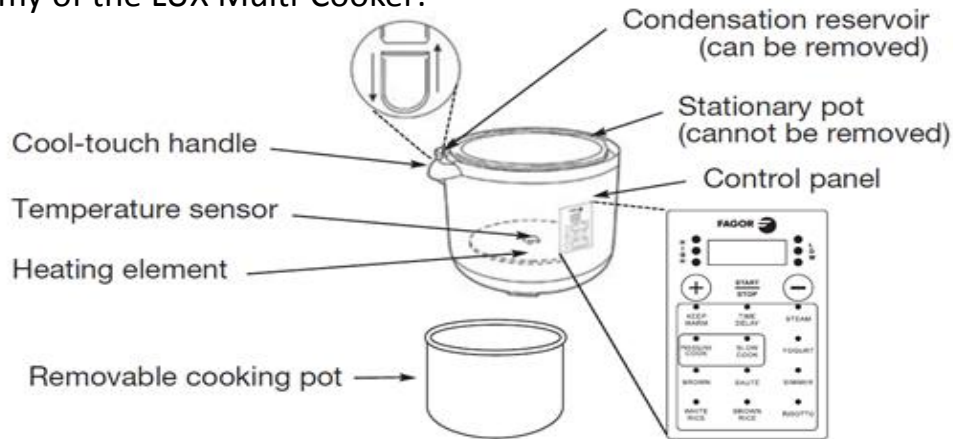


Thank you for purchasing the Fagor Multi-cooker. Before you begin using the unit, please read the Important Safeguards section of the user manual on pages 3 and 4.

Anatomy of the LUX Multi-Cooker:

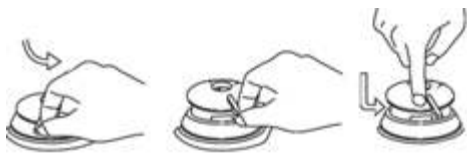


Note: All ingredients must go into the removable cooking pot.



- If you do not press the START/STOP button at the end of the cooking time, the Multi-cooker will switch to KEEP WARM and will beep periodically to remind you that cooking has ended.
- Do not fill the pot more than 2/3 full with food and liquid. Do not fill the unit more than 1/2 full when cooking foods that expand during cooking.
- The silicone gasket should always be properly positioned on the underside of the lid; otherwise the unit will not work. Check periodically to make sure that it is clean, flexible, and not torn.

How to remove the regulator knob:



1. Press down while turning the pressure regulator knob counterclockwise past STEAM to CLEAN setting.



2. Carefully lift to remove for cleaning.



Open

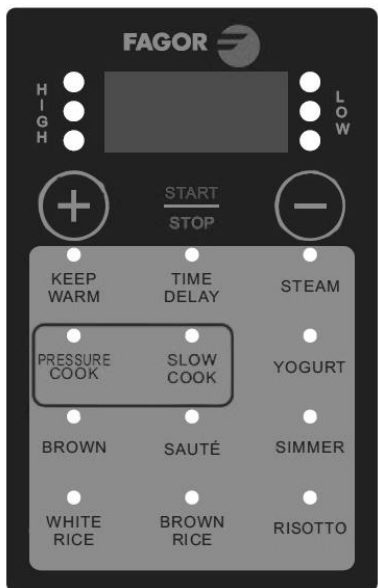


Close



Note: Before cooking, align the dot on the base with either **STEAM** or **PRESSURE** on the regulator knob depending on the cooking function selected.

Regulator Knob	Panel Function
STEAM	Slow Cooking
STEAM	Steam
PRESSURE	Pressure Cooking
STEAM	Keep Warm
STEAM	Yogurt
(Lid Off)	Brown
(Lid Off)	Sauté
(Lid Off)	Simmer
PRESSURE	White Rice
PRESSURE	Risotto
PRESSURE	Brown Rice



Pressure Cook

Add ingredients into the removable cooking pot, close and lock the lid.

Turn the pressure regulator knob to **PRESSURE**.

Press the **PRESSURE COOK** button once for HIGH pressure and twice for LOW pressure. Press the + or – buttons to adjust timing.

Press **START/STOP** button to begin cooking.

As the pressure builds, the three circles next to the chosen pressure setting will light up one at a time. Once pressure has been reached, all three circles will turn solid red. **Note:** the time will then begin counting down.

Once cook time is over, the unit will beep and automatically go to **KEEP WARM** function until you press the **START/STOP** button to cancel the program. Release the pressure by turning the pressure regulator knob to **STEAM**.

Slow Cook

Add ingredients into the removable cooking pot, close and lock the lid.

Turn the pressure regulator knob to **STEAM**.

Press the **SLOW COOK** button once for HIGH temperature and twice for LOW temperature. Press the + or – buttons to adjust timing.

Press **START/STOP** button to begin cooking.

As the temperature builds, the three circles next to the chosen setting will light up one at a time. Once temperature has been reached, all three circles will turn solid red. **Note:** the time will then begin counting down.

Once cook time is over, the unit will beep and automatically go to **KEEP WARM** function until you press the **START/STOP** button to cancel the program.

Rice Programs

Add water to rice ratios to the removable cooking pot, close and lock the lid.

Turn the pressure regulator knob to **PRESSURE**.

Press the **WHITE RICE, BROWN RICE, or RISOTTO** button. Press the + or – buttons to adjust timing.

Press **START/STOP** button to begin cooking.

As the pressure builds, the three circles next to the chosen pressure setting will light up one at a time. Once pressure has been reached, all three circles will turn solid red. **Note:** the time will then begin counting down.

Once cook time is over, the unit will beep and automatically go to **KEEP WARM** function until you press the **START/STOP** button to cancel the program. Release the pressure by turning the pressure regulator knob to **STEAM**.