

---

# **Fusion OLED Display**

---

## **User Guide**



# Fusion OLED Display, a brief introduction

Thank you for purchasing the Fusion OLED Display.

The Fusion OLED Display can be used in combination with:

- **All Fusion Amps**
- **DSP313\*/\*\***  
**(\*OEM only)**  
**(\*\* Previously called MP-DSP Main)**

Please read the safety instructions on the next page before assembling and installing and/or operating the Fusion OLED Display.

This assembly instruction covers the general assembly instructions for the Fusion OLED Display.

## Contents of packaging:

- 1x Fusion OLED Display
- 1x Cable Z5C125L1
- All required mounting materials
- This assembly instruction

# Table of Contents

Chapter	Page
Introduction, Table of Contents	2
Safety precautions	2
Parts	3
Details	3
Dimensions	4
Preparations, Mounting and Connecting	5
Connections	7
Remote Control	7
Notifications	8
Firmware Update	8
Settings	9
System Information, Troubleshooting	10
Disclaimer	11
Revisions	11
Notes	11

## Safety precautions

Damage due to inappropriate handling is not covered by warranty. This product has no user-serviceable parts.

**Warning:** To reduce the risk of fire or electric shock, do not expose this device to rain or moisture.

## Précautions de sécurité

Les dommages causés par un usage non approprié sont exclus de la garantie. Ce produit ne contient aucune pièce devant être entretenue par l'utilisateur.

**Avvertissement:** Pour réduire les risques de choc électrique, ne pas exposer cet appareil à la pluie ou l'humidité.



Attention: Observe precautions for handling electrostatic sensitive devices. This module uses semiconductors that can be damaged by electrostatic discharge (ESD).



The lightning flash with arrowhead symbol within an equilateral triangle is intended to alert the user to the presence of uninsulated "dangerous voltage" within the product's enclosure, that may be of significant magnitude to constitute a risk of electric shock to persons.



The exclamation point within an equilateral triangle is intended to alert the user of the presence of important operating and maintaining (servicing) instructions in the literature accompanying the appliance.

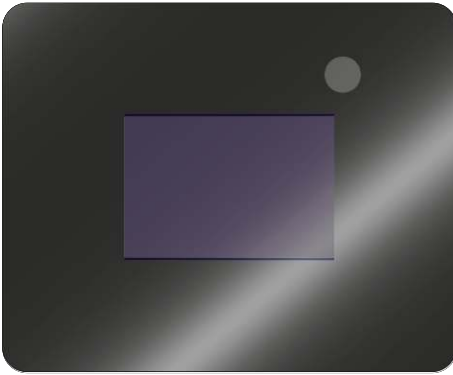
1. Read these instructions.
2. Keep these instructions.
3. Heed all warnings.
4. Follow all instructions.
5. Do not use this apparatus near water.
6. Clean only with a dry cloth.
7. Do not install near any heat sources such as radiators, heat registers, stoves, or other apparatus (including amplifiers) that produce heat.
8. Only use this attachment/accessory as specified by the manufacturer.
9. Refer all servicing to qualified service personnel. Servicing is required when the apparatus has been damaged in any way, such as signal cable or plug is damaged, liquid has been spilled or objects have fallen into the apparatus, the apparatus has been exposed to rain or moisture, does not operate normally, or has been dropped.
10. This apparatus shall not be exposed to dripping or splashing, and no object filled with liquids, such as vases or beer glasses, shall be placed on the apparatus.
11. Do not run any cables across the back off the module. Apply fixtures to cables to ensure that this is not compromised.
12. Before using this product, ensure the cable is correctly connected not damaged. If you detect any damage, do not use the product.
13. Changes or modifications not expressly approved by Hypex Electronics will void compliance and therefore the user's authority to operate the equipment.
14. Service or modifications by any person or persons other than by Hypex Electronics authorized personnel voids the warranty.



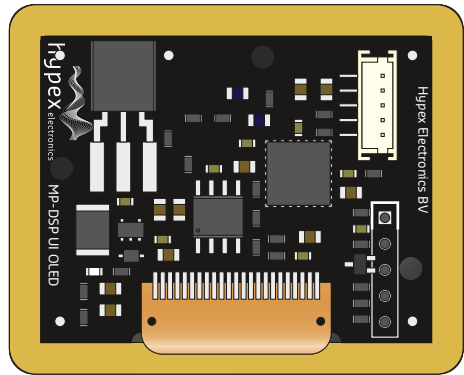
Correct disposal of this product: This symbol indicates that this product should not be disposed of with your household waste, according to the WEEE directive (2012/19/EU) and your national law. This product should be handed over to an authorized collection site for recycling waste electrical and electronic equipment (EEE). Improper handling of this type of waste could have a possible negative impact on the environment and human health due to potentially hazardous substances that are generally associated with EEE. At the same time, your cooperation in the correct disposal of this product will contribute to the effective usage of natural resources. For more information about where you can drop off your waste equipment for recycling, please contact your local city office, waste authority, or your household waste disposal service.

# Parts

**FRONT**

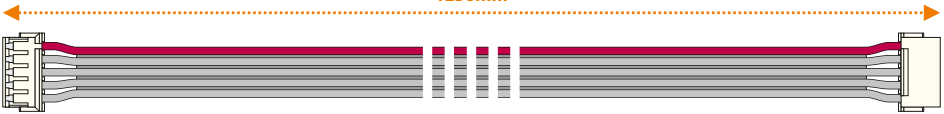


**BACK**

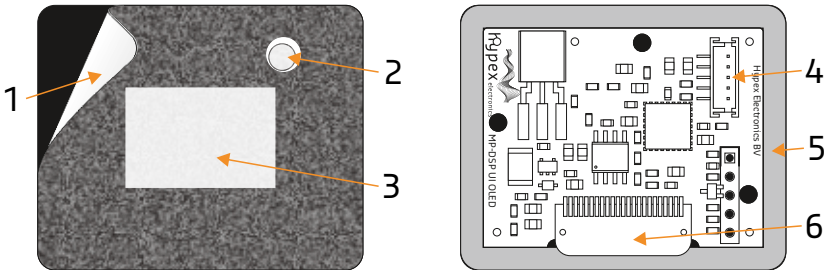


**Cable**

1250mm

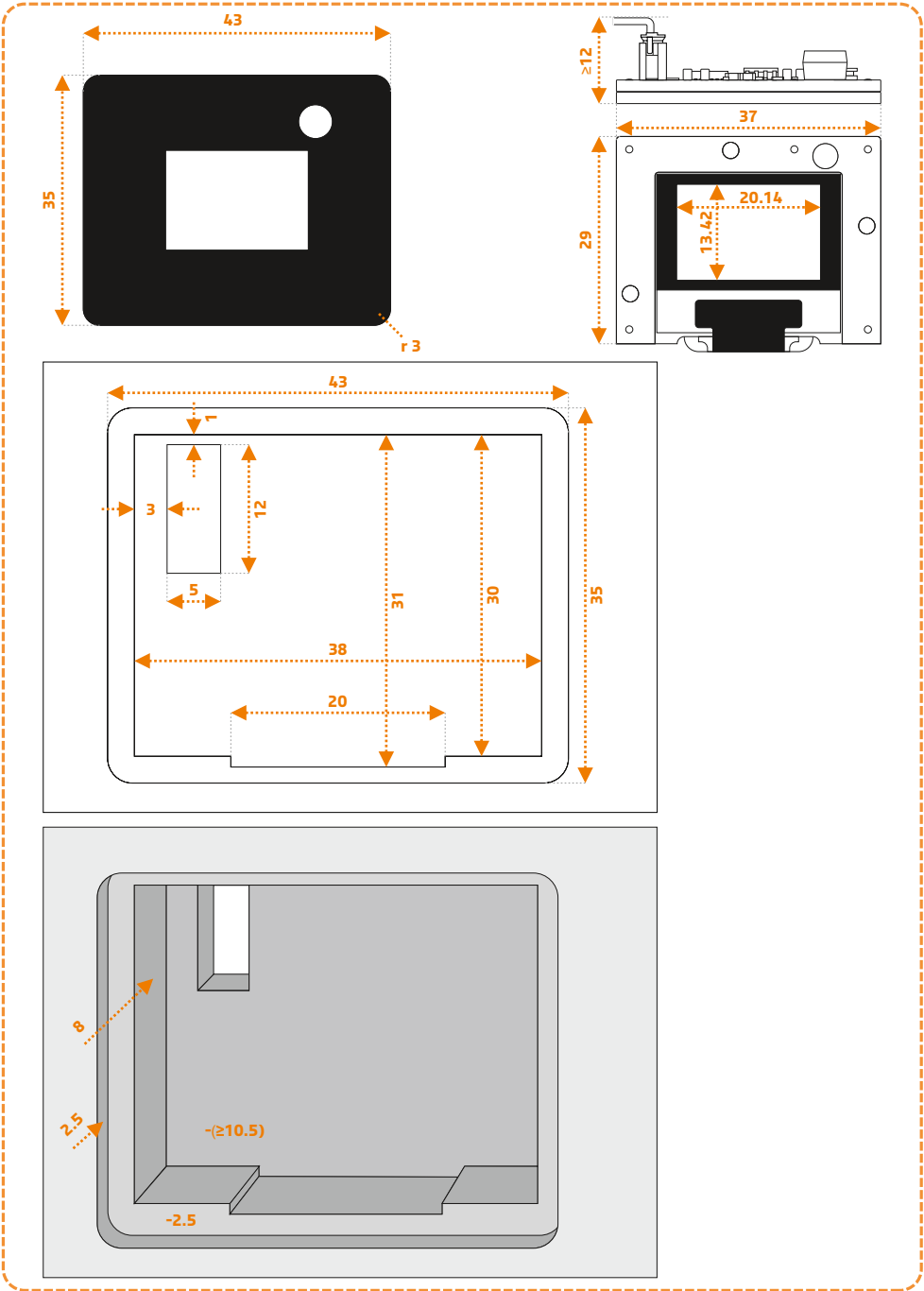


# Details



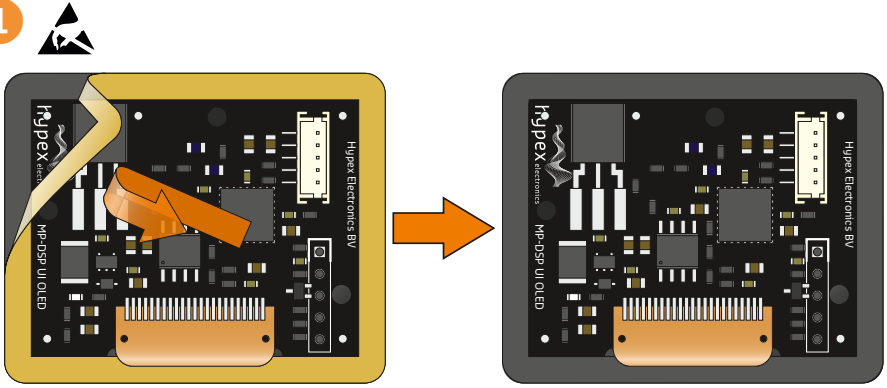
- 1: Protective foil
- 2: IR remote receiver
- 3: Transparent display area
- 4: Cable entry to DSP
- 5: Adhesive tape
- 6: Flex-cable

# Dimensions (mm)

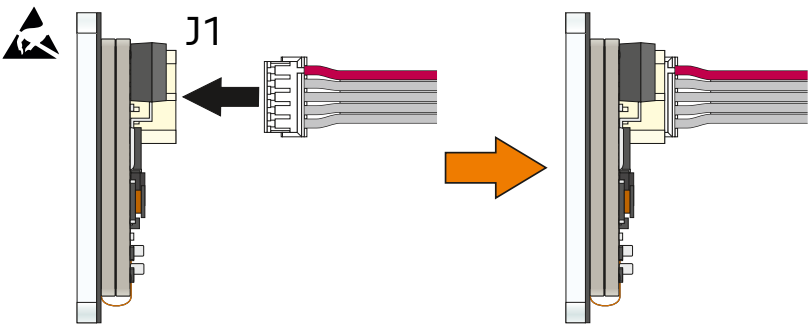


# Preparations, mounting and connecting

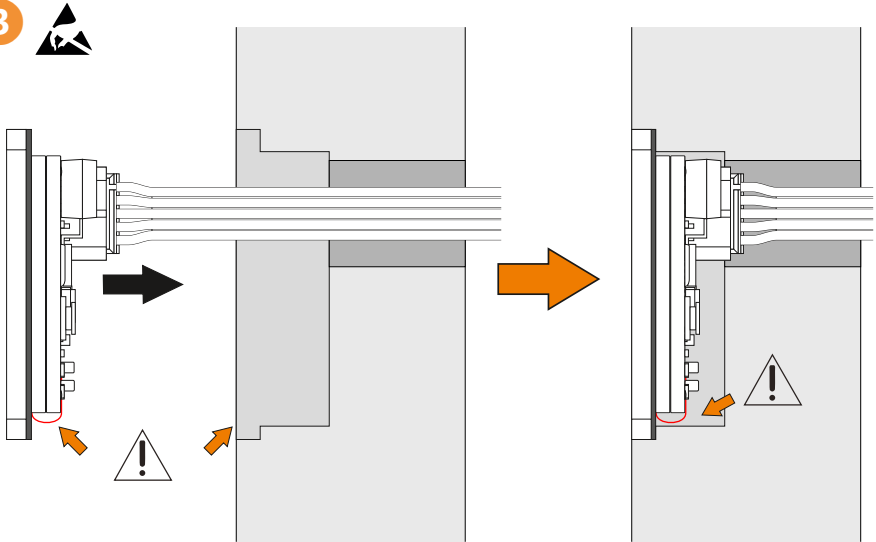
1



2



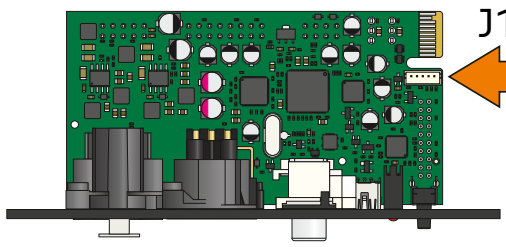
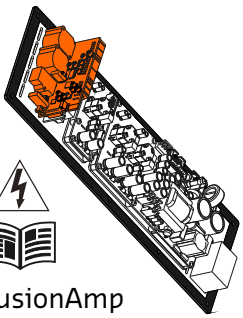
3



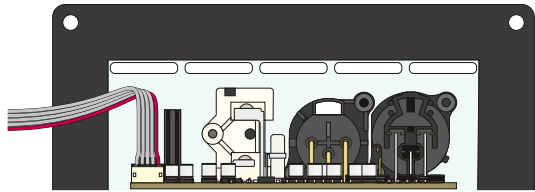
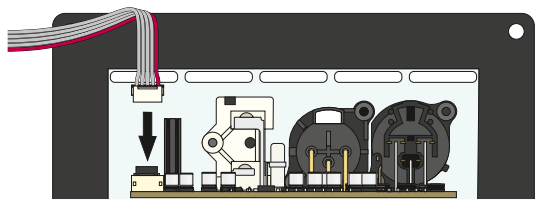
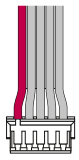
4



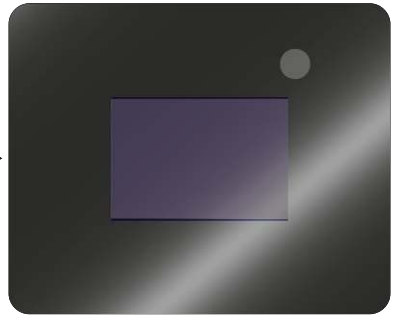
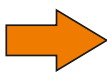
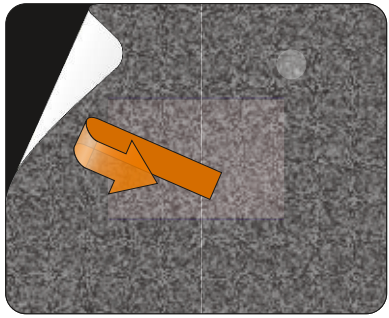
FusionAmp



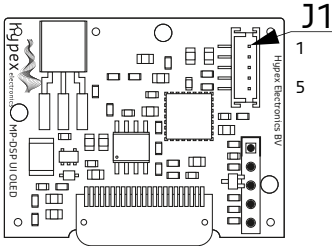
J15



5



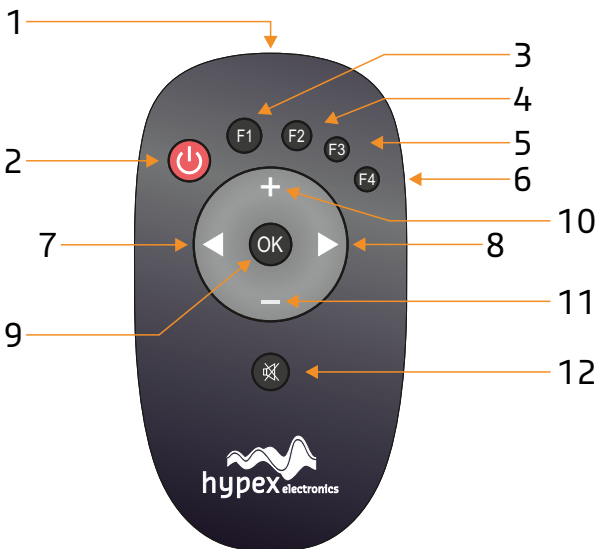
# Connections



Pin	Direction	Function
J1:1	Input	+3V3
J1:2	Output	IR output
J1:3	-	Gnd
J1:4	Input	Front LED1
J1:5	Input	Front LED2

Connector type JST B5B-ZR

# Remote Control



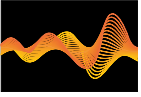
- 1: IR transmitter
- 2: Power on/off
- 3: Preset 1
- 4: Preset 2
- 5: Preset 3
- 6: (not used)
- 7: Input previous
- 8: Input next
- 9: (not used)
- 10: Volume +
- 11: Volume -
- 12: Mute

## Rc5 Codes supported by FusionAmp (Device code: 16)

Code	FusionAmp Function	Hypex Remote	Code	FusionAmp Function	Hypex Remote
34	Reserved	Internal use	61	Reserved	F4
48	Reserved	OK	18	Analogue XLR	-
50	Power ON/OFF	ON/OFF toggle	19	Analogue RCA	-
51	Volume UP	Arrow Up	20	Analogue High Level Input	-
52	Volume DOWN	Arrow Down	21	SPDIF (digital RCA)	-
53	Mute	Mute	22	AES (digital XLR)	-
54	Select next input	Arrow right	23	Toslink	-
55	Select previous input	Arrow left	24	Future option	-
56	Select preset 1	F1	25	Reserved	-
67	Select preset 2	F2	28	Reserved	-
59	Select preset 3	F3	29	Reserved	-

# Notifications

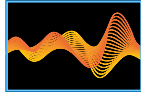
## Default



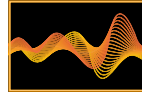
Startscreen /  
Idle



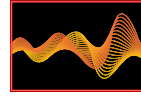
Power Standby



Auto source  
Scanning



Warning High  
Temperature



Warning Clipping

## Feedback



Current Volume



Mute



Equalizer Enabled / Disabled



Preset Number

## Source



Analogue Balanced



Analogue Unbalanced



Digital Coaxial



Digital Balanced



Digital Optical  
TOSLINK



High Level input  
(only 1-way systems)



Auto source detect



Future input option

## Notice



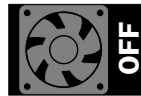
Warning High  
Temperature



Protection initiated  
auto shut down



Fan auto on



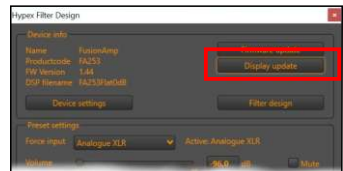
Fan auto off

# Firmware Update

To update the display with the latest firmware it can manually downloaded from our website and uploaded to your device using the **Display update** function in HFD.

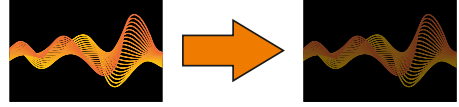
For instructions and the latest procedures please check out the latest **FA Update Tutorial** which can be found at:

[www.hypex.nl/faq/](http://www.hypex.nl/faq/) Q: How to update my Fusion Amp Firmware?



# Settings

HFD provides the possibility to adjust the brightness of your display.



## Options:

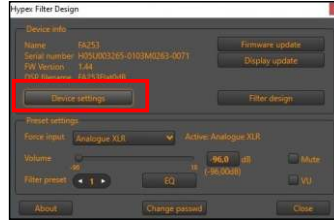
- Active brightness (0-15)
- Idle screen brightness (1-15 / 0 = OFF)

## 1 HFD

Make sure the Fusion Amp is powered on.

Connect it with USB to the computer.

Open the latest HFD (v4.97 or higher) and press **Device settings**.



## 2 Device settings

The **Display** settings are situated in the **Options** section.

**max** will set the brightness of the display during activities.

**dimmed** will set the brightness during idle.



OLED displays are very sensitive to burn-in symptoms, such as permanent discolouring, if white or brightly coloured logos are used at high brightness levels. To avoid burn-in symptoms, **we recommend that you set the level to 6 or lower**.

## 3 Adjustments

Adjustments are directly implemented and don't need saving to be retained. Make the adjustments by pressing the dots situated left (down) and right (up) or by selecting the number and filling in the desired value.

Most of the time the idle screen will be shown during adjustments so in order to review the max setting you can activate the display with the remote control by altering the volume or other options during brightness



## System information

### Performance:

96x64 Pixels  
65536 Colors

### Dimensions and weight:

External size (WxHxD): 43 x 35 x 7,5 mm  
(excl connector)  
Total weight: 12,5 g  
(excl cable)

### Remote:

RC5 IR sensor for Hypex Remote Control

### Operation:

On all Fusion Amps  
DSP313 (OEM only)

## Troubleshooting

### No power

- Check if your Fusion Amp or DSP is powered on.
- Check if the Fusion OLED Display cable is connected correctly with your Fusion Amp or DSP.

## Frequently asked questions

### Q How many Fusion OLED Displays can I use in a master and slave setup?

A You can use a Fusion OLED Display with every Fusion amp in your chain. Basically you only need one at your master device. A FA slave will not respond to IR commands, but the display will function as expected.

### Q I do not have any technical experience, can I install this display myself?

A Yes! Even without any technical experience you can install the display. Use this assembly instruction.

### Q After turning off my FusionAmp the display stays on for a couple of seconds, is this normal?

A Yes, this is normal. In order to shut down the system gracefully, the DSP and Display shut down time is delayed.

### Q If I update the HFD software or firmware do I need to update the Display as well?

A No, updates for the display are separate.

### Q Can I use a third party remote control?

A Yes, that is possible. Please refer to page 7 „Remote Control“.

## Support

We continuously work to improve your experience with our products. If you have suggestions, remarks or found a bug, please contact us.

If you have any problem with your Fusion OLED Display please consult this assembly instruction. If this assembly instruction is not sufficient in order to fix your problem please contact the Hypex support department.

Visit our website!

The latest datasheets and manuals can be found there. Look into our FAQ and if you can not find the answer there, you can also contact us and we will be happy to assist you!





---

**Hypex Electronics BV**  
Kattegat 8  
9723 JP Groningen, The Netherlands  
+31 50 526 4993  
sales@hypex.nl  
www.hypex.nl

