



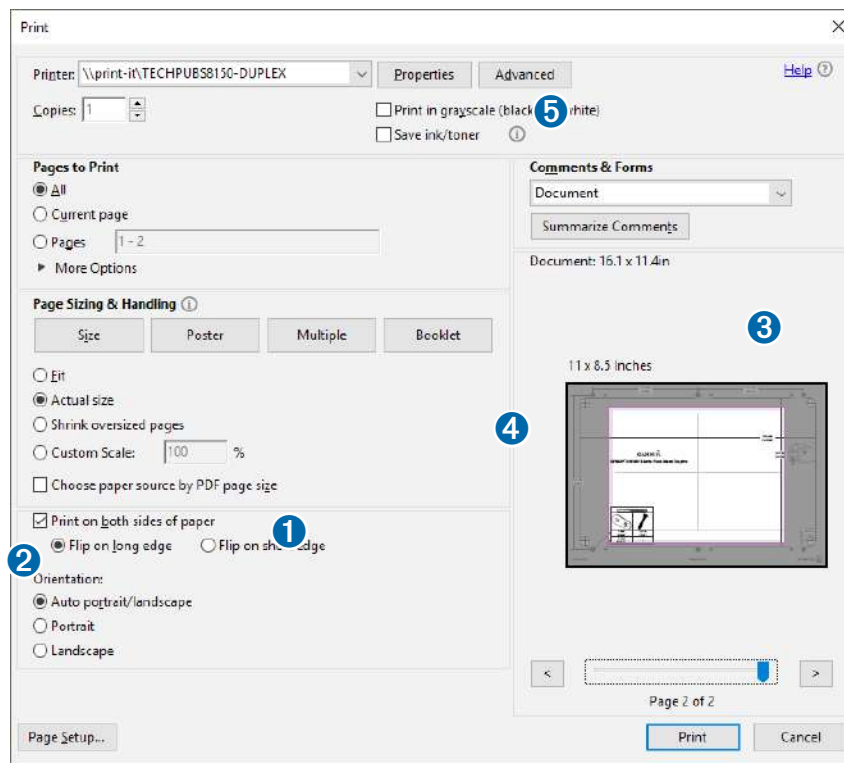
Printing a Mounting Template

NOTICE

It is not recommended that you print a mounting template on your own. Use the template that came in the product box.

If you do print the template, you must follow these instructions for printing a mounting template precisely. To print large templates, you need large enough paper and printer. Failure to have the correct sized paper and printer, or a failure to follow these instructions, may result in an incorrectly sized template and therefore an incorrect cutout (too large or too small) on the mounting surface of your boat.

1 Select **File > Print**.



2 Select **None** for **Page Scaling** 1.

3 Ensure the check mark is next to **Auto-Rotate and Center** 2.

4 Drag the arrow 3 to the right, to view page 2 in the window below.

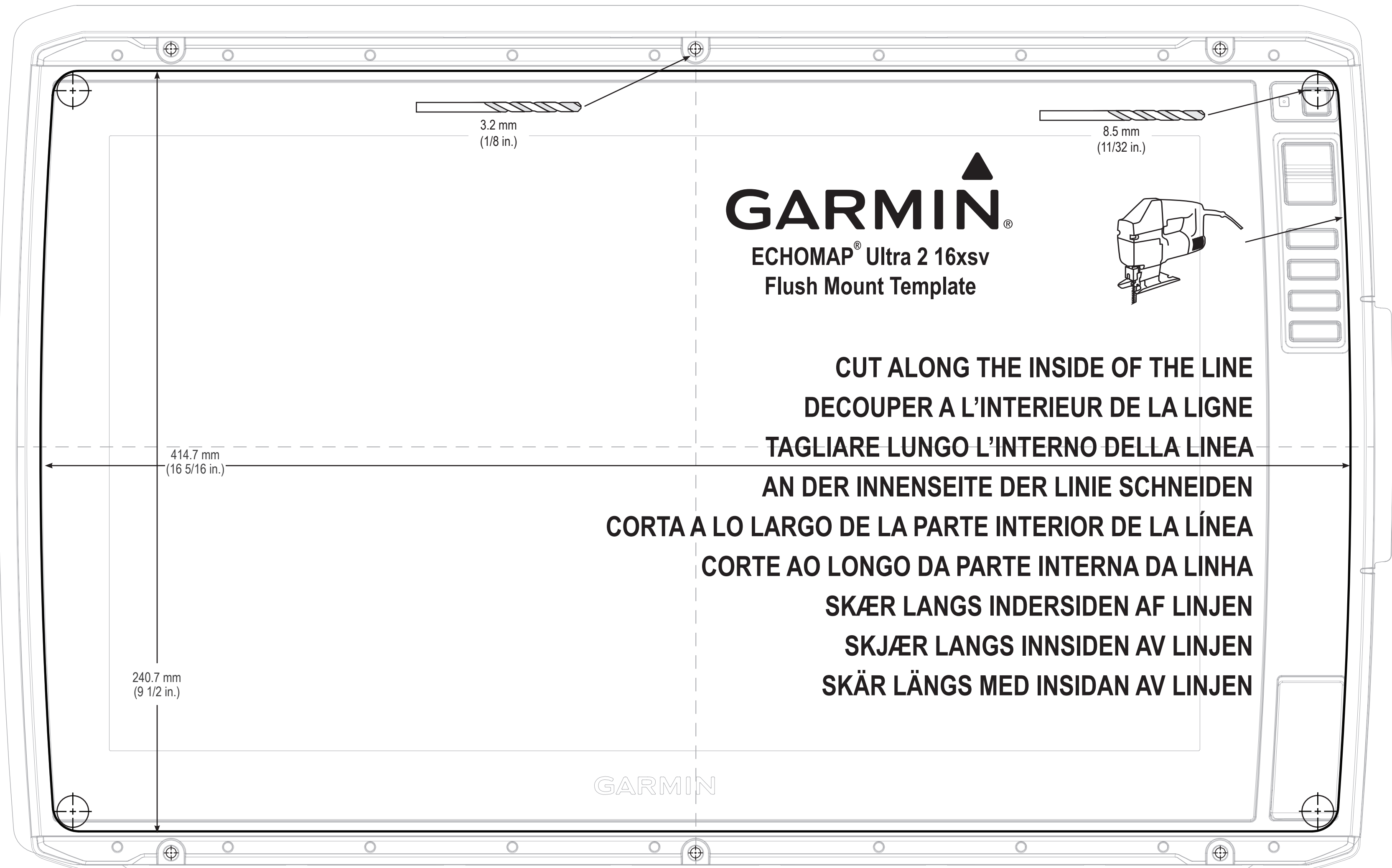
4 Verify that the paper size is larger than the template 4.

In this example, the paper is not larger than the template.

5 If the paper size is not large enough, select **Properties** 5 and select a **Page Size** that is larger than the template.

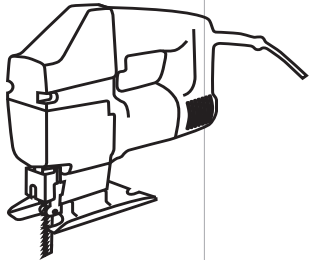
NOTICE

Fusion is not responsible for any damages or expenses resulting from a miscut mounting surface arising from a failure to follow these instructions.



GARMIN®

**ECHOMAP® Ultra 2 16xsv
Flush Mount Template**



**CUT ALONG THE INSIDE OF THE LINE
DECOUPER A L'INTERIEUR DE LA LIGNE
TAGLIARE LUNGO L'INTERNO DELLA LINEA
AN DER INNENSEITE DER LINIE SCHNEIDEN
CORTA A LO LARGO DE LA PARTE INTERIOR DE LA LÍNEA
CORTE AO LONGO DA PARTE INTERNA DA LINHA
SKÆR LANGS INDERSIDEN AF LINJEN
SKJÆR LANGS INNSIDEN AV LINJEN
SKÄR LÄNGS MED INSIDAN AV LINJEN**

GARMIN

