



imagine

connected smart home



Get started
with your new
GE imagine Lights



works with
Hey Google



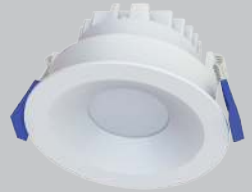
seamless setup with
Google Home app

Seamless Setup

1 Plug in your Google Nest device (smart speaker)



2 In the same room, turn on the light. The light will start blinking and waiting to be added in Google Home App. Installation by a licensed electrician is required.

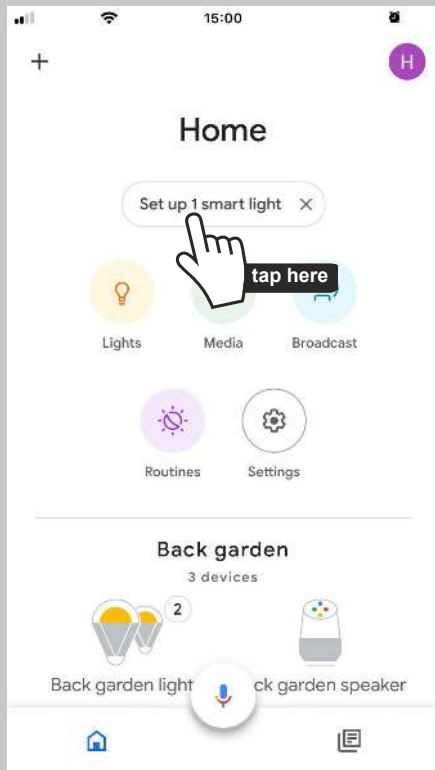


3 Download the Google Home App and follow the prompts to easily set up



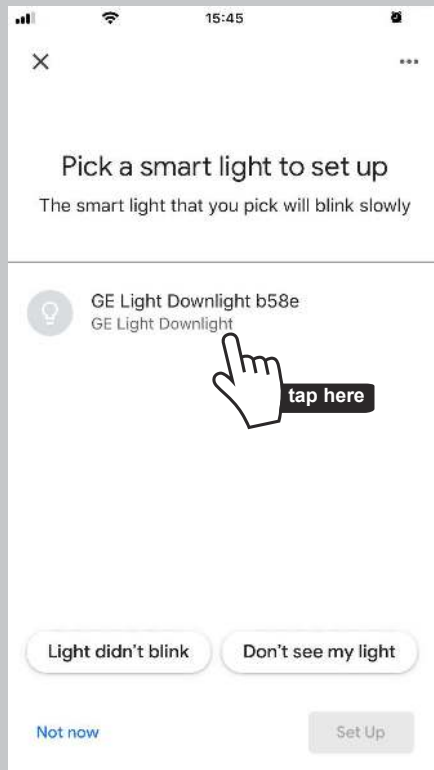
4

Set up smart light



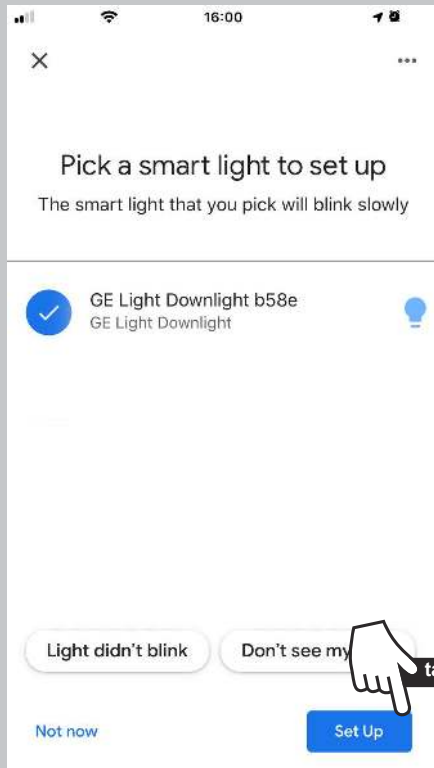
5

Pick smart light to set up



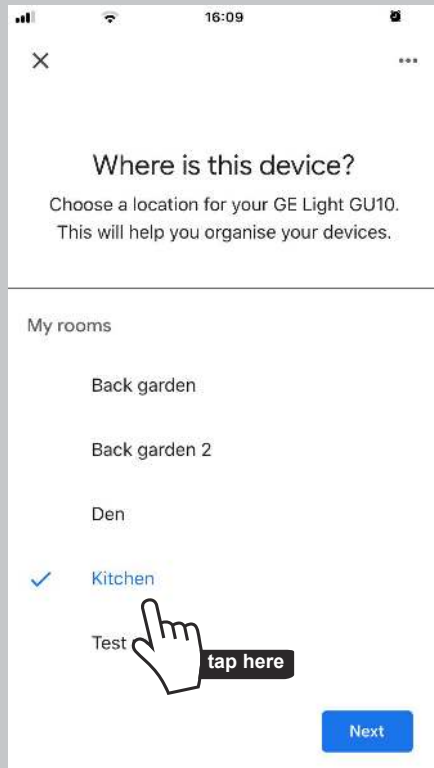
6

Select smart light and tap Set up



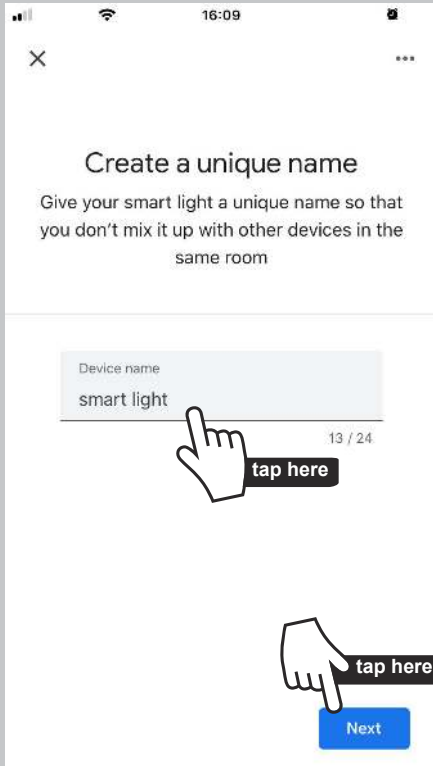
7

Choose room and tap Next



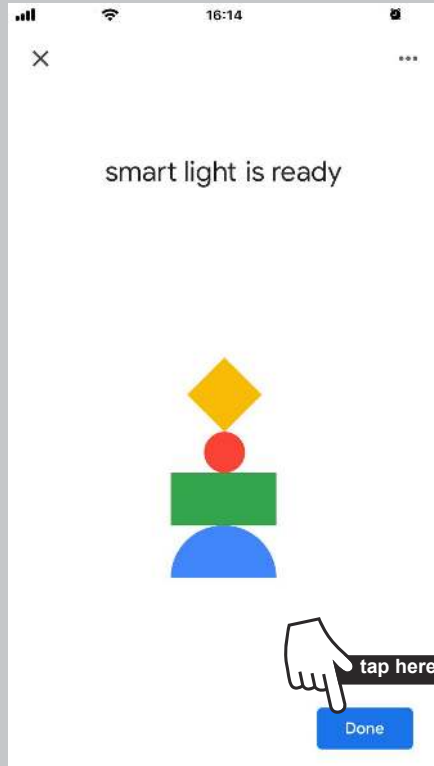
8

Create a unique name
and tap Next

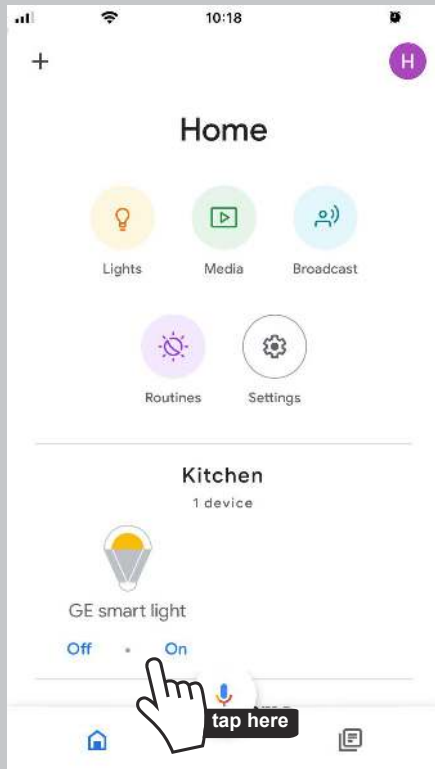


9

Your Light is now ready
and tap Done



Now your light and room is on App and ready to be controlled



Control your light, power On & Off, dim your light Down & Up



change colours



Control your lights with your voice



Support your
circadian rhythm
sleep / wake
cycle



Control your
lights with
your voice



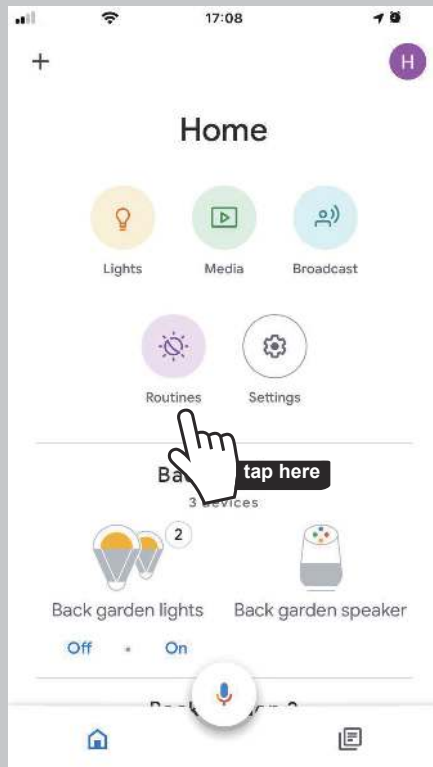
Set up
Routines for
your lights



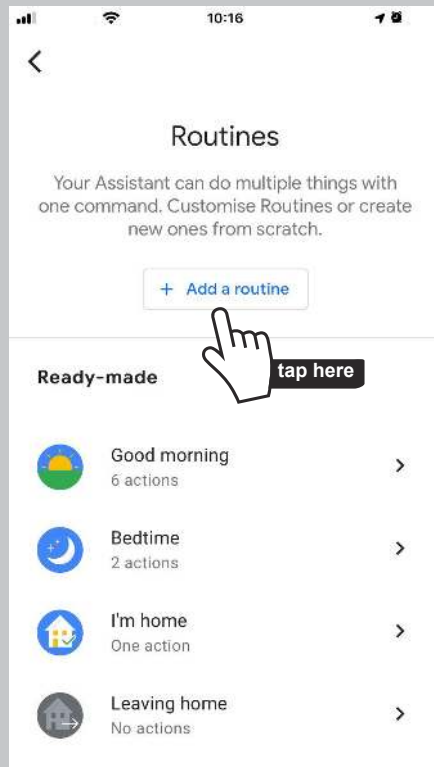
Create
ambience in
your home

“Hey Google, turn on the light”

Explore Google Home App with Routines



Routines



Troubleshooting



Problem: If there's no blinking from light after powering on.

Solution: Please follow below Factory Reset process.

Turn power On & Off, 5 times with 2 second intervals (in between switching) each time using light switch.



1. On & Off (wait for 2 seconds)
2. On & Off (wait for 2 seconds)
3. On & Off (wait for 2 seconds)
4. On & Off (wait for 2 seconds)
5. On & Off (wait for 2 seconds)
6. On & light should now start to blink

light should now start to blink.

After performing the above On & Off cycle, if light does not blink, please redo the the above On & Off cycle (factory reset) again.

Confirm the light blinks and go to Step

4

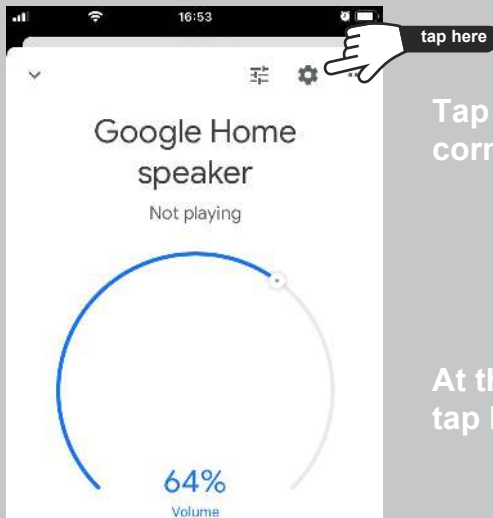


Troubleshooting



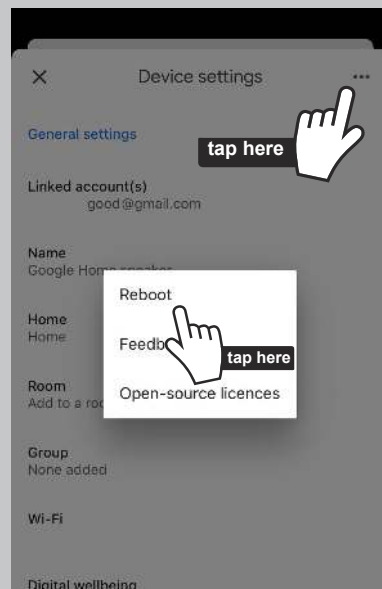
Problem: Problem: The light can be added successfully, but cannot be controlled.

Solution: Please follow below to reboot the Google Home.



Tap the  in the top right corner of the page.

At the top right, tap More  → **Reboot**





imagine

connected smart home

This GE imagine connected smart home downlight features and controls are performed via the App or Voice only.



Brightness or dimming controls can only be performed via the App or Voice as outlined in the quick start guide supplied with your downlight. Note: This smart downlight is not compatible with the use of any external dimmer.



Use in Dry Locations only



**Australian / New Zealand Regulatory Compliance Mark
and Responsible supplier number E6**

GE is a trademark of General Electric Company and is under license by Light Source Solutions and Light Source Solutions New Zealand Ltd. of 140 Fulton Drive Derrimut Vic 3026 Australia.



imagine

connected smart home



Thank you
for choosing GE imagine.
Enjoy your new smart lighting experience



works with
Hey Google



seamless setup with
Google Home app