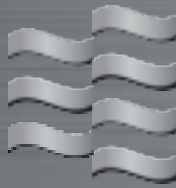


Goldair™

PLATINUM



Operating Instructions

2000W Glass Panel Heater with WiFi



Model: GPPH220

Wifi – Downloading and Setting up APP

This APP is supported only on 2.4GHz Wifi channels.

The Goldair app and device pairing process require your 2.4ghz connection to be separated from your 5ghz connection. For instructions on how to do this please contact your internet provider.



Please note, we endeavour to keep our app up to date as devices and software continue to adapt and evolve. However, with ever changing technology and software we cannot guarantee as models age that their Wifi operation will continue to be supported. If you feel like the day-to-day functionality of your app is impacted, please contact our customer services team.

Download Goldair mobile APP

- Open the APP Store or Google Play on your mobile phone.
- Open 'Search' and enter 'Goldair'
- Click 'GET' and begin to download and install.

Once downloaded to your phone open the APP

- Tap REGISTER near the bottom of the screen.
- Read and agree to the Privacy Policy.
- Add your email address.
- Tap 'Obtain verification code'

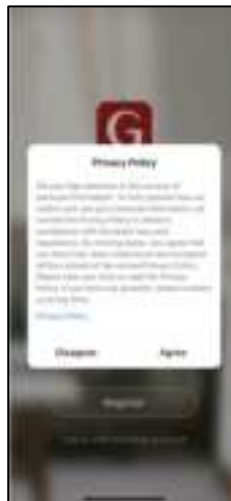


You will then receive an email with a verification code.

- Enter the verification code from your email.
- Create a password.
- Then tap confirm.

If you haven't received a verification code via email, tap the resend button and when the verification code is received follow above steps.

Your APP is now registered and ready for pairing to your device.



Pairing APP to Device

Connect with 2.4ghz Wifi Network

On the Home screen, tap 'Add Device' or the '+' icon.



Using the categories on the left, navigate to your device and tap on the image.



Confirm you are connected to a 2.4ghz network. If your 2.4ghz and 5ghz networks are dual banded, click 'Common router setting method' on how to split, or contact your internet provider.



Pairing APP to Device

Connect with 2.4ghz Wifi Network: EZ Mode


See instructions below to finalise your device pairing via EZ mode.

The app will default to EZ Mode in the right hand corner.
Ensure your device's Wifi LED is flashing rapidly.
If it is not, hold down the "heat setting" button for 5 seconds or until the Wifi icon begins to flash.
Click 'Confirm indicator rapidly blink' and 'Next'



Your device will now pair with the app.

Please ensure your device, modem and phone are as close together as possible and that your 2.4ghz Wifi signal is strong.

Once the device has paired, choose  to rename it by tapping the Pen icon

Choose the most suitable room type and click 'Done' in the top right hand corner.



Pairing APP to Device

Connect with 2.4ghz Wifi Network: AP Mode

See instructions below to finalise your device pairing via AP Mode.



Change 'EZ Mode' to 'AP Mode' by clicking in the top right hand corner
Ensure your device's Wifi LED is flashing slowly.

If it is not, hold down the "heat setting" button for 5 seconds or until the Wifi icon begins to flash.

Click 'Confirm indicator slowly blink' and 'Next'



Click 'Go Connect' to connect to the device's Hotspot by selecting the network highlighted on the screen in your app, e.g. 'SmartLife- XXXX'



Select the device's Hotspot network and you will be returned to the app. If not, navigate back to the Goldair app.

Note- if you get a notification saying 'Internet may not be available' press Dismiss.



Your device will now pair with the app.

Please ensure your device, modem and phone are as close together as possible.

Once the device has paired, choose to rename it by tapping the Pen icon

Choose the most suitable room type and click 'Done' in the top right hand corner.



Operating your Device from the APP

If the phone interface color is dark red, this indicates that the heater is in the OFF standby setting.

- Tap the OFF icon and the heater will turn on. The display will change to bright red.
- You can now control the heater.
- To turn the heater off again tap the power icon and the heater will revert to the dark screen.



Dark Red – Heater Off



Bright Red – Heater On

TEMPERATURE SETTING:

The temperature can be set from 15 – 35°C

- Tap the '+' or '-' button to set the temperature.
- When the set temperature is higher than the ambient temperature, the heater begins to heat.
- If the heater temperature setting is below ambient temperature the heater will be in standby mode and will not operate until the ambient temperature drops below the set temperature.



Operating your Device from the APP

HEAT SETTINGS

Press the HIGH/LOW button to switch between high and low heat settings. The set level will be shown on the bottom of the APP.

It will also show on the heater display as 'Mode'

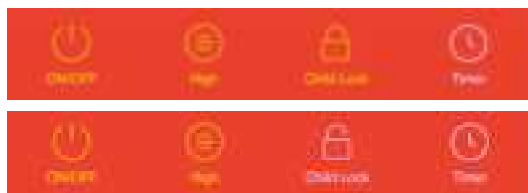


CHILD LOCK

Tap the padlock icon to display the closed padlock indicating that the child lock is active.

Tap the padlock icon again to unlock the child lock.

You can adjust the heater settings with your mobile phone without having to unlock the child lock.



AUTO OFF TIMER

When the heater is ON you can set it to turn OFF after a number of hours (1-24 hours) has elapsed.

- In the APP, tap the heater to be operated and enter the operation interface.
- With the power icon on the lower left corner of the mobile phone interface is displaying ON and the heater is turned ON.
- Tap the timer button and scroll to select the number of hours before the heater will turn OFF and tap OK to return to the heater operation interface.
- The timer icon on the lower right will display how long before the timer will turn the heater OFF.

To cancel the timer, touch the timer button again and the numbers will disappear and just show timer.

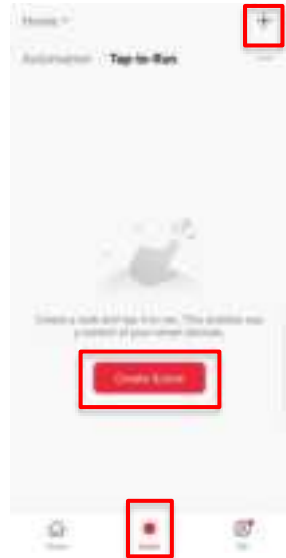


Set up Tap-To-Run & Create Smart Scenes

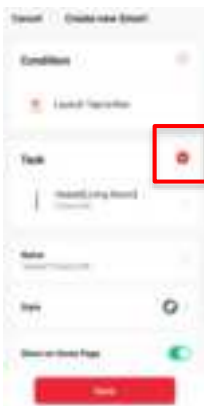
Store your favourite settings or set up automated functions based on conditions in the 'Smart' part of your Goldair app.

Warning- you must remember to turn off any Smart functions prior to leaving the house or going away. We recommend you only operate your Goldair devices when someone is on the premises.

- Tap 'Smart' on the bottom of your mobile phone.
- Tap 'Create Scene' or the '+' icon on the top right.



Click 'Launch Tap-to-Run' to save your preferred settings on your devices to launch at the click of a button. Click 'Run the device' and choose a device. Preset your desired functions such as Power ON/OFF, temperature, mode and timer as per on the device's functions. Click 'Next'

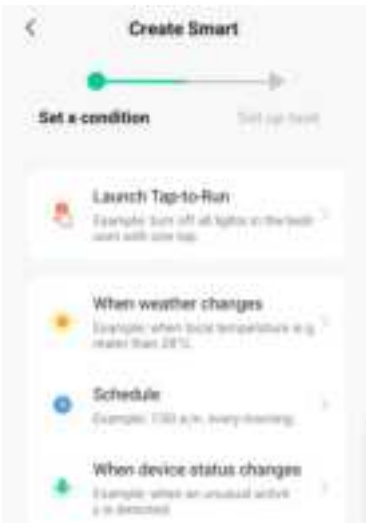


Review your conditions and tasks on this screen, or choose to add another device or task by clicking the '+' icon.

Click Save to store your settings and your new task will appear on the Smart homepage. Click it to operate your desired task.



Set up Tap-To-Run & Create Smart Scenes



As well as setting up automated Tap-to-Run tasks, you can set conditions to operate your devices.

Weather:

Click 'When weather changes' to create a task based on your local outside weather. Choose between temperature, humidity, weather type, sunset/sunrise or wind speed. Select your desired condition and click 'Next'. Click 'Run the device' and choose a device. Preset your desired functions such as Power ON/OFF, temperature, mode and timer as per on the device's functions. Click 'Next'. Review your conditions and click save. Your automation will appear on the main Smart homepage.

Schedule:

Click 'Schedule' to create a task for your device at selected times of the day. Click 'Repeat' to choose days of the week or leave as 'Once' to operate as a one off. Choose your desired time from the scroll bar and click 'Next'. Click 'Run the device' and choose a device. Preset your desired functions such as Power ON/OFF, temperature, mode and timer as per on the device's functions. Click 'Next'. Review your conditions and click save. Your automation will appear on the main Smart homepage.

Status Change

Click 'When device status changes' to create a condition based on any function on your device, for example turning the Power Off when any device function is changed (to act as a child lock)

Voice Control

Once your smart scenes are set up, you can use Amazon Alexa or Google Home Routines to operate the scenes via voice control. Refer to your Amazon or Google Home user guides for instructions on how to pair your routine to smart scenes.

Operating your Device from the APP

Device settings:

The screenshot shows the settings page for a device named "Heater" located in the "Living Room". The page is divided into several sections:

- Header:** "Heater" and "Room: Living Room". An arrow points to the top right corner, indicating where to change the name, location, and image of the device.
- Device Information:** A section with an arrow pointing to it, indicating where to view device information.
- Tap-to-Run and Automation:** A section with an arrow pointing to it, indicating where to view tap-to-run and smart scene automations.
- Multi-Party Control:** A section containing icons for "Alexa" and "Google Assistant". An arrow points to these icons, indicating where to view compatible voice control devices and instructions.
- Device Offline Notification:** A section with a toggle switch for "Offline Notification". An arrow points to the toggle, indicating where to turn on notifications for when the device goes offline.
- Others:** A section containing several options:
 - "Share Device": An arrow points to it, indicating where to share the device with family.
 - "Create Group": An arrow points to it, indicating where to create a group of devices.
 - "FAQ & Feedback": An arrow points to it, indicating where to read FAQs and submit feedback.
 - "Add to home screen": An arrow points to it, indicating where to add a device shortcut to the home screen.
 - "Check Device Network": An arrow points to it, indicating where to review the device network.
 - "Device Update": An arrow points to it, indicating where to view device updates and turn on automatic updates.
 - "Remove Device": An arrow points to it, indicating where to remove the device from the app.

Operating your Device from the APP

Share device with family member:

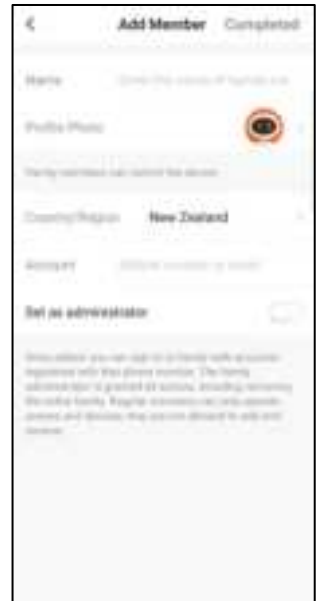
- The person you add will need to have the Goldair APP installed on their phone.
- Enter your family member's details to share device operation with them.
- Tap 'Confirm' to complete the addition.

Remove family member from device:

- Tap 'Share Devices' to delete the number of the person you want to cancel. Tap 'Confirm' to confirm.

NOTE: There can only be one user operating the device at a time. The APP needs to be closed on all other devices to enable the sharing to work.

NOTE: If someone else sets up their phone on the same device without using the 'Device Sharing' the original phone will be disconnected and the device will disappear from the device list.

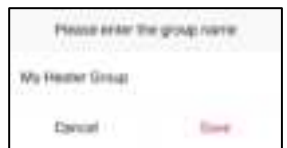


Group your devices:

Devices within the same group can be controlled simultaneously

- Under 'Create Group' setting, select all devices you wish to group together. Click 'Save'
- Enter a group name of choice. Click Save.

You can now operate all devices within this group simultaneously.



Ungroup your devices:

- Click on to pen icon within device group
- Select 'Dismiss Group'

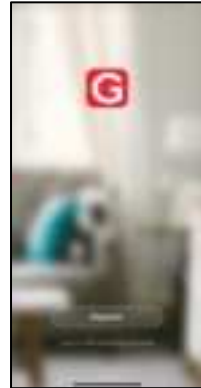
You have now deleted your group.

How to connect to your Alexa devices

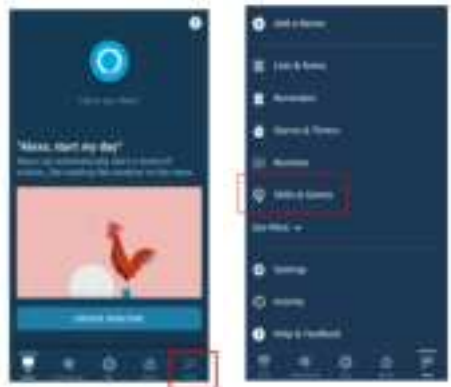
- Download the Goldair App and pair your device.

Note: change the name of the device to an easily identifiable name such as 'Bedroom Fan' or 'Living Room Heater'

Note: Ensure you have downloaded and have configured the Amazon Alexa app. Please see your Alexa device's user manual for instructions.



- On the main page of the Alexa app, click the 'More' icon in the bottom right hand side of the page. Click on 'Skills and Games'
- Click on the search icon in the top right hand corner



- Click on the search icon in the top right hand corner

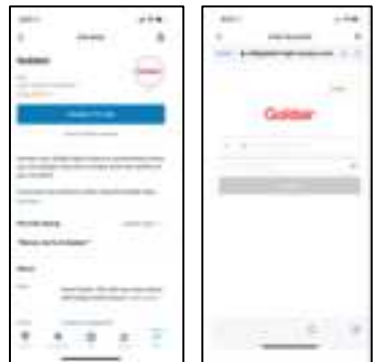


How to connect to your Alexa devices

- Type 'Goldair' in the search bar and click to proceed.



- Click 'Enable to use' and type your phone number/ email address and password and click 'Link Now'



- Click 'Authorise' and go back to the Home screen. Your devices will now appear and you can operate using voice control.



How to connect to your Alexa devices

SUGGESTED VOICE COMMANDS

Note: Amazon and Google are in control of voice control functionality and terminology. Not all functions available via the controller or APP can be controlled via voice command.

Voice control on your device will allow you to turn ON and OFF and adjust the settings. Suggested voice commands to work with your Alexa device are:

Turning ON/OFF

Alexa, turn "Device Name" ON

Alexa, turn "Device Name" OFF

Adjust the settings

Alexa, turn "Device Name" to High (omit High with the desired setting or temperature)

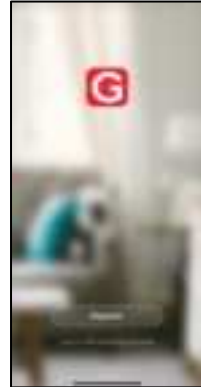
How to connect to your Google Home devices

Follow the below instructions to connect your device to Google Home.

- Download the Goldair App and pair your device.

Note: change the name of the device to an easily identifiable name such as 'Bedroom Fan' or 'Living Room Heater'

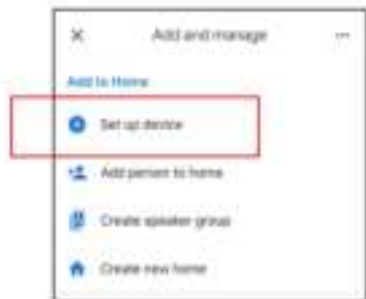
Note: Ensure you have downloaded and have configured the Google Home/Assistant apps. Please see your Google device's user manual for instructions.



- On the main page of the Google Home app, click the '+' icon in the top left hand side of the page.



- Click 'Set up device'



How to connect to your Google Home devices

- Click 'Works with Google'



- Type 'Goldair' in the search bar and click to proceed.

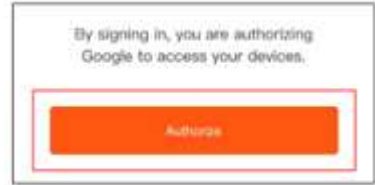


- Type your phone number/ email address and password and click 'Link Now'



How to connect to your Google Home devices

- Click Authorise and all devices from your Goldair App will appear on screen.



- You have the option to add these to a particular room in your home
- When you go back to the Home screen, your devices will now appear and you can operate using voice control.



SUGGESTED VOICE COMMANDS

Note: Amazon and Google are in control of voice control functionality and terminology. Not all functions available via the controller or APP can be controlled via voice command.

Voice control on your device will allow you to turn ON and OFF and adjust the settings. Suggested voice commands to work with your Google device are:

Turning ON/OFF

Ok Google, turn "Device Name" ON
Ok Google, turn "Device Name" OFF

Adjust the settings

Ok Google, turn "Device Name" to High (omit High with the desired setting or temperature)

Goldair™

PLATINUM



CDB  Goldair™

New Zealand
PO Box 100707,
North Shore Mail Centre,
Auckland, 0745
www.goldair.co.nz

Australia
PO Box 574,
South Morang,
Victoria, 3752
www.goldair.com.au