



**Green Lion**

## **12V JUMP STARTER SAVIOR**

SKU: GNSAVRJSGY

Model No: GL-JX33

## Table of Contents

Product Overview	2
Specifications	2
Product Sections	3
Packing list	3
Setup guide	4
Manual Instruction	5
Safety Precautions	6
Frequently Asked Questions	7
Disposal	8
Warranty	8
Contact Us	8

## Product Overview

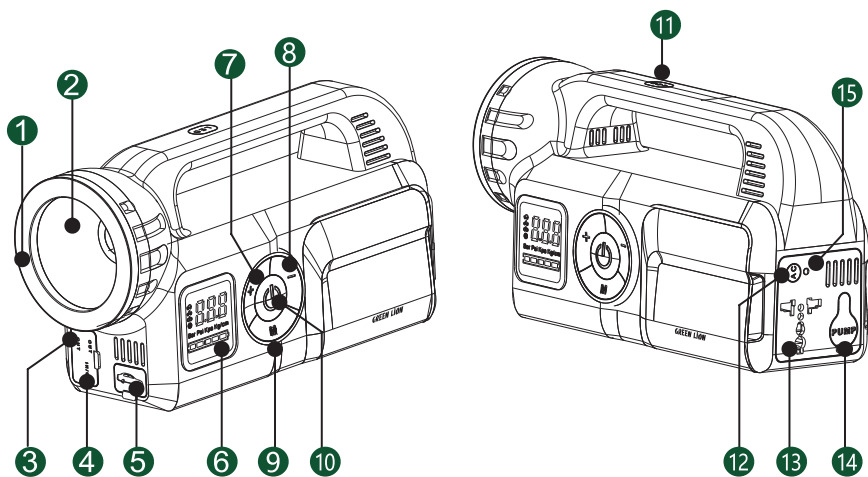
The Green Lion Savior 12V Jump Starter is a powerful device for jump-starting gasoline (up to 8.0L) and diesel (up to 6.0L) engines. It features a 24,000mAh battery, 3000A current, air inflator, flashlight, and multiple ports. Compact and portable, it operates in extreme temperatures as low as -40°C.

## Specifications

Model No	GL-JX33
Material	ABS
Battery Capacity	24000mAh 88.8Wh
Power	120W
Voltage	12V
Current	3000-800A
Gasoline Cars	12V/8.0L Engine
Diesel Cars	12V/6.0L Engine
Flashlight	10W 2000 lm
Light Modes	Flash-Strobe-SOS
Pump Pressure	150-0 PSI
Airflow	>25L/min
Working Temp	-40°C~70°C
Charging Port	Type-C
Charging Time	4-5 Hrs
AC Output	220V, 50Hz
Type-C Input	5V/3A, 9V/3A, 12V/3A, 15V/3A, 20V/3.25A (PD45W)
Type-C Output	5V/3A, 9V/3A, 12V/3A, 15V/3A, 20V/3.25A (PD45W)
USB-A1 Output	5V/2A, 9V/2A (QC 18W)
USB-A2 Output	5V/2A
Product Weight	1.61 kg
Product Dimensions	139*90*257 mm

## Product Sections

1. LED Auxiliary lights
2. LED Lights
3. USB Output
4. Charge Input
5. 12V Start Output
6. LED Display
7. + Plus Key
8. - Minus Key
9. Setting Key
10. ON/OFF
11. Light Switch
12. AC Switch
13. AC Output
14. Inflatable Port
15. AC Indicator light



## Packing list

- Jump starter X1
- 1 in 1 mobile cable X1
- Juper cable X1
- Inflatable tube X1
- Inflatable hose X1

## Setup guide

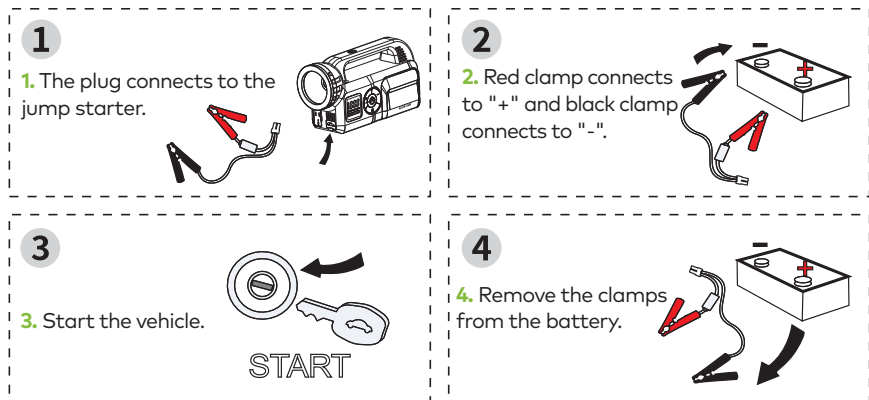
### 1. Starting a car with the lump starter

Connect the jumper cables to the jump starter by plugging the connector into the jump starter socket. Ensure the plug is fully inserted.

Attach the red clamp to the positive (+) terminal and connect the black clamp to the negative (-) terminal. Ensure the battery clamps are clean and make good contact with the battery terminals.

Slide the jump starter ON/OFF switch to the ON position.

Start the car.



### 2. How to Start the Power Supply

Press and hold the power button for 2-3 seconds to turn on the screen. Press and hold the power button again for 2-3 seconds to turn off the screen. The power will automatically shut off after 40 seconds of inactivity.

### 3. Turn on Inverter Output

Press the AC power button to activate the AC socket function, then click to turn on the output function.

#### 4. How to Switch the Air Pump Mode

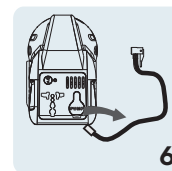
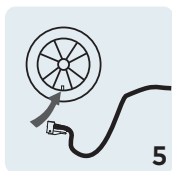
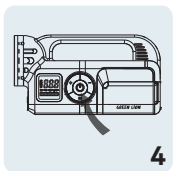
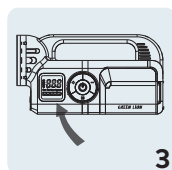
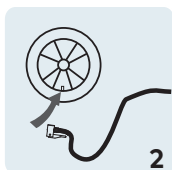
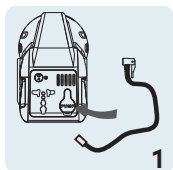
Press and hold the switch button for 2-3 seconds to turn on the device, then click the mode button to switch between car, motorcycle, bicycle, basketball inflation, or custom mode. To adjust the air pressure, press the plus or minus buttons. Hold the mode key for 1 second to switch the inflation measurement unit.

#### 5. How to Use the Lighting

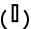
Once the device is on, click to turn on the ring mounted auxiliary light, and then click again to switch between the auxiliary lights in constant mode 1 and constant mode 2. Warning flash, SOS rescue, and off modes are also available. To turn off the lights, press and hold for about 1 second. If the headlights are on, press and hold the LED button to switch between the auxiliary lights and the headlights.

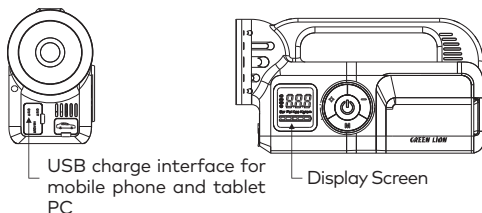
## Manual Instruction

1. Remove the built-in air duct from the back of the body.
2. Connect the tire end nozzle.
3. Observe the inflation parameters of the display screen.
4. Press the air pump start button.
5. Pull the air pipe out of the tire nozzle.
6. Retract the back and inflate it.



It takes about 2–3 hours to charge the jump starter.

Turn the main power switch to ON, tap (  ) and you can charge your phone and tablet PC.



## Safety Precautions

This machine is suitable for regular car tires only and cannot be used for large and heavy vehicle tires, such as trucks, vans, or container trucks.

During inflation, the air outlet will generate high temperatures. Please be cautious of potential burns.

Ensure the plug is securely inserted into the jump starter. If not, it may fail to start your car and cause damage to the jump starter.

Ensure the battery clamps are clean and make good contact with the battery terminals. If the jump starter fails to start your car after 3 attempts, stop and check for other possible issues.

Remove the clamps from the battery terminal within 30 seconds of starting your car to avoid damaging the jump starter.

Never connect the two battery clamps together, as this can be dangerous and void your warranty.

Ensure the jump starter has at least 80 % charge before using it to start your car.

Warnings When Charging the Product:

Keep the product away from sofas, curtains, and other inflammables or explosives to prevent safety accidents.

Do not use the USB output for extended periods. Overuse may damage the battery.

Charge the product at least every three months if not in regular use.  
Store the product in a cool, ventilated area. Avoid exposure to high temperatures or direct sunlight.  
Do not disassemble the mainframe yourself. Keep it out of reach of children to avoid safety risks.

## Frequently Asked Questions

**Problem 1:** After a few seconds of successful startup, it turns off automatically or after removing the clamps.

This issue is usually caused by the excessive aging of the car battery. Try starting again after running the car for 3 minutes to charge the battery. If the issue persists, it likely means the battery has no power storage capacity, and you may need a new battery.

**Problem 2:** The battery is not charging.

Check if the display shows "IN" or flashes "%". If neither is displayed, verify that the charger connection is normal.

Ensure the charging cable is securely connected, and the main socket has power. If necessary, replace the charger or cable (you can also try using a phone charger with the same specifications).

**Problem 3:** You can't charge your phone.

Check if the boot power supply is turned on and has at least 10 % power. Ensure the charging cable is securely connected and undamaged. If necessary, replace the charging cable.

**Problem 4:** You can't start the car.

If the engine does not start immediately, ensure the clamps are securely connected. If the battery cable is dirty or rusty, clean it and try again. If the car is in a protected state, try pressing and holding the start button for about 10 seconds. If it still doesn't start, check if the clamps are connected to the copper head of the battery, ensuring the negative electrode is attached to the car's iron shell.

If the above solutions do not resolve the problem, please contact customer service for further assistance and do not disassemble the machine.

## Disposal

This product must not be disposed of as unsorted household waste. It is important to separate such waste for proper treatment and recycling, in compliance with local waste management regulations.

## Warranty

Products that you buy directly from our **Green Lion** website or shop come with a 24-month warranty.

When you buy **Green Lion** products from any of our approved sellers, you only get a 12-month warranty. If you want to extend this warranty, go to our website at <https://www.greenlion.net/warranty> and fill out the form with your information. Don't forget to upload a picture of the product too. After we've checked and accepted your request, we'll send you an email to confirm that your product's warranty has been extended.

For more info, please check:  
<https://www.greenlion.net/warranty>

## Contact Us

If you have any questions about this Privacy Policy, please contact us at:

Website: <https://www.greenlion.net/>

Sales: [sales@greenlion.net](mailto:sales@greenlion.net)

Service Support: [Support@greenlion.net](mailto:Support@greenlion.net)

Telegram: [@greenlion\\_global](https://www.instagram.com/greenlion_global)

Instagram: [@greenlion\\_global](https://www.instagram.com/greenlion_global)