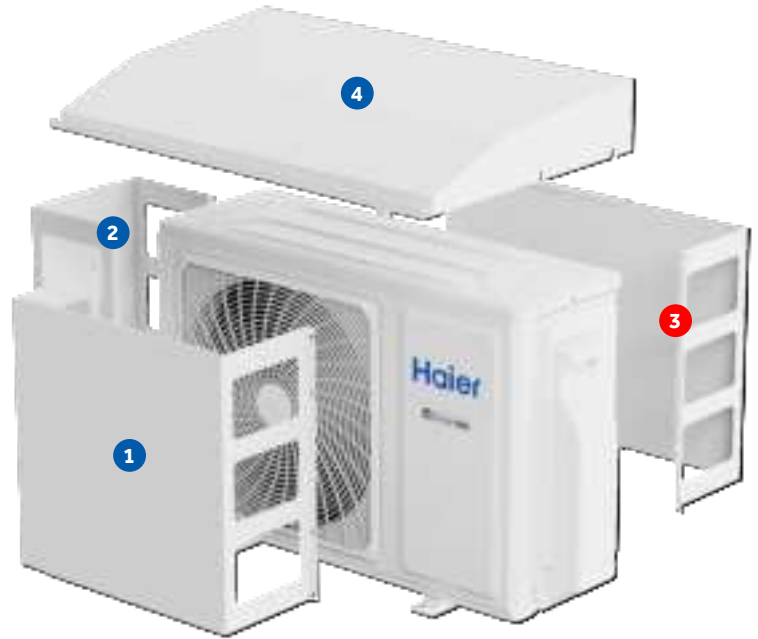


Wind Baffles & Top Covers

Operating Conditions	Recommended Accessories			
	1 Front Wind Baffle	2 Side Wind Baffle	3 Back Wind Baffle	4 Top Cover
Low Ambient Cooling below 23°F (5°C) (server/mechanical room)	Required	Required	Required	Required
Low Ambient Heating below 5°F (-15°C)	-	Strongly Recommended	Strongly Recommended	Strongly Recommended
Unit installed on a flat roof or facing prevailing wind	Required	-	-	-



Fabricated from durable 20 gauge G90 galvanized steel and engineered to provide optimal performance when operating the outdoor unit in cold, harsh climates.

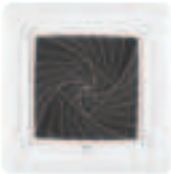
A front wind baffle is required for all climates when mounted on a flat roof or facing prevailing winds.

Outdoor Unit Accessory Compatibility Table

	OUTDOOR UNITS																								
	TEMPO						FLEXFIT				ARCTIC			ARCTIC MULTI		FLEXFIT MULTI									
	115V		230V																						
	1Q09TE1BEA	1Q12TE1BEA	1Q09TE2BEA	1Q12TE2BEA	1Q18TE2BEA	1Q24TE2BEA	1Q09FF2BEA	1Q12FF2BEA	1Q15FF2BEA	1Q18FF2BEA	1Q24FF2BEA	1Q3036FF2BEA	1Q09RT2BEA	1Q12RT2BEA	1Q18RT2BEA	1Q24RT2BEA	1Q3036RT2BEA	2Q20RT2BEA	3Q24RT2BEA	4Q36RT2BEA	5Q42RT2BEA	2Q18FF2BEA	3Q24FF2BEA	4Q36FF2BEA	
FRONT OR BACK WIND BAFFLES (If both a front and back wind baffle are needed, order two (2) of the required part)																									
UAWB15WA	•	•	•	•	•		•	•	•	•		•	•												
UAWB30WA																							•	•	
UAWB31WA																									•
UAWB51WA																									
SIDE WIND BAFFLES																									
UASWB15WA	•	•	•	•	•		•	•	•	•		•	•												
UASWB30WA																							•	•	
UASWB31WA																									•
UASWB51WA																									
TOP COVERS																									
UATC15WA	•	•	•	•			•	•																	
UATC20WA					•									•	•								•	•	
UATC21WA																									
UATC30WA															•								•	•	
UATC31WA																									•
UATC35WA						•																			
UATC51WA																									
5" CENTRAL CONTROLLER																									
UACT32A	•	•	•	•	•	•	•	•	•	•	•	•	•	•	•	•	•	•	•	•	•	•	•	•	•

Cassette Panels

Required for cassette indoor units; sold separately.
Remote controller (WJ26X35394) is included with cassette panel.



QACCP01WA
Compact Cassette Panel
Fits Models:
US09CB2BEA
US12CB2BEA
US18CB2BEA



QALCP01WA
Large Cassette Panel
Fits Models:
US24LB2BEA
US30LB2BEA
US36LB2BEA

Supply Plenums

Supply plenums for ducted indoor models.



UAPT0912A
Fits Models:
US09MB2BEA
US12MB2BEA



UAPT1824A
Fits Models:
US18MB2BEA
US24MB2BEA



UAPT3048A
Fits Models:
US30MB2BEA
US36MB2BEA
US42MB2BEA
US48MB2BEA

Refrigerant Detection Sensor (RDS)

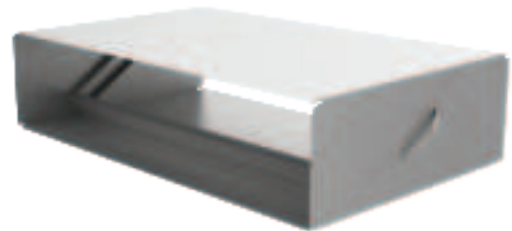


UALS01A
Ductless Refrigerant
Detection Sensor

Note: See room sizing requirements to determine if the Refrigerant Detection Sensor (RDS) is required and needs to be purchased separately for highwall and cassette indoor units. RDS is factory-installed on console and ducted units.

Merv Return Air Filter Boxes

MERV return air filter boxes for ducted indoor models.



UAMFB0912A
Fits Models:
US09MB2BEA
US12MB2BEA

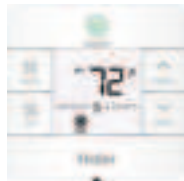
UAMFB1824A
Fits Models:
US18MB2BEA
US24MB2BEA

UAMFB3048A
Fits Models:
US30MB2BEA
US36MB2BEA
US42MB2BEA
US48MB2BEA

Controllers

Controllers from Haier allow you to take command of your environment. With convenient user-friendly button layouts and clear digital displays, the system can be easily set to meet and maintain comfort levels.

Wired Controller



Compatible with all indoor unit types.

	QACT17B
Power Supply	12V AC
Controllable Indoor Groups	Up to 16
On/Off	•
Modes	Auto-Cool-Dry-Heat-Fan-Auto
Precise Temperature Control +/- 1F (+/- 0.5C)	•
Fan Speed Adjustment	•
Turbo	•
Quiet	•
Airflow Direction - Up/Down	•
Airflow Direction - Left/Right	•
Four-Way Cassette Blade Control	
Indoor Temperature Display	•
Filter Change Reminder	500 hr
Clock	
Error Code Reporting/Recording	•
Control Lock	•
Daily Program	
Weekly Program	
Sleep	
Backlight	•
Fahrenheit/Celsius Display	•
Temperature Range Limit	•
Temperature Compensation	•
Static Pressure Setting	•
Groups Setting	•
Password	

Remote Controllers



Ships with standard highwalls.



Ships with consoles.



Ships with premium highwalls & cassette panels.

	WJ26X35393	WJ26X35813	WJ26X35394
Individual Control	•	•	•
Backlight	•	•	•
Up/Down Louver Oscillating Control	•	•	•
Left/Right Louver Oscillating Control			•
Four-Way Cassette Air Supply Control			•
Child Lock	•	•	•
Indoor LED Display On/Off	•	•	•
Fahrenheit/Celsius Display	•	•	•
Precise Temperature Control +/- 1F (+/- 0.5C)	•	•	•
Motion Sensor			•

5" Central Controller

5" LED Touch Screen

A vibrant and intuitive interface for easy navigation and control.

Integration Capability

Seamlessly integrates both ductless and central HVAC systems for unified management.

Multi-Zone Control

Manages up to 31 ductless zones and 1 central 24V HVAC zone, providing comprehensive climate control.



	UACT32A
Screen Saving	•
Backlight	•
Power Supply	24VAC*
Max. IDUs Controllable	31 + (1) 24VAC Central Zone
Indoor/Set-Point Temperature Display	•
Interlock Input	•
Interlock Output Dry Contact	•
Temperature Set Range	60-86°F (16-30°C)
Zones	Up to 31 Zones
Modes	Cool, Heat, Auto, Dry, Fan
Fan Speeds	Low, Med, High
Group Control	•
Individual IDU Control	•
Dual System Rotational Operation	•
Temperature Set Range	40-99°F (5-37°C)
Humidity	Display in %
Mode	Cool, Heat, Auto
Fan Speed	Auto, Circulating, On
WiFi/Alexa/Google Home	•

*if not connecting to 24V central HVAC system, a field supplied 24VAC transformer is needed.

Indoor Unit Accessory Compatibility Table

		Remote Controllers			Wired Controller	Refrigerant Detection Sensor (RDS)	
		Model Number	WJ26X35393	WJ26X35813	WJ26X35394	QACT17B	UALS01A
Caliber 115V Highwall	QS09WB1BEA	●				○	○
	QS12WB1BEA	●				○	○
Standard Highwall	QS07WB2BEA	●				○	○
	QS09WB2BEA	●				○	○
	QS12WB2BEA	●				○	○
	QS15WB2BEA	●				○	○
	QS18WB2BEA	●				○	○
	QS24WB2BEA	●				○	○
	QS30WB2BEA	●				○	○
	QS36WB2BEA	●				○	○
Premium Highwall	QS09WP2BEA			●		○	○
	QS12WP2BEA			●		○	○
	QS18WP2BEA			●		○	○
	QS24WP2BEA			●		○	○
Compact Cassette	US09CB2BEA						○
	US12CB2BEA						○
	US18CB2BEA						○
	QACCP01WA*			●		○	
Large Cassette	US24LB2BEA						○
	US30LB2BEA						○
	US36LB2BEA						○
	QALCP01WA*			●		○	
Console	US09FB2BEA		●			○	●
	US12FB2BEA		●			○	●
	US18FB2BEA		●			○	●
Mid-Static Ducted	US09MB2BEA					⊙	●
	US12MB2BEA					⊙	●
	US18MB2BEA					⊙	●
	US24MB2BEA					⊙	●
	US30MB2BEA					⊙	●
	US36MB2BEA					⊙	●
	US42MB2BEA					⊙	●
US48MB2BEA					⊙	●	

*Cassette Panel

● = Included ⊙ = Required, sold separately ○ = Optional; sold separately

See Outdoor Unit Accessory Compatibility Table for 5" Central Controller compatibility