



SKU # 1007 581 042  
Model # 22RT2092214

# ASSEMBLY INSTRUCTIONS

## S3 LED 279 WW 2D ELEGANT BROWN DEER FAMILY WITH IC

### USE AND CARE GUIDE

#### PLANNING ASSEMBLY

Carefully remove all the parts from the box and place them on the ground. Many parts are connected by the lighting string that runs throughout the item. Take special care not to pull, cut or damage the lighting string. Read the entire manual prior to assembly and identify all the parts included in the package against the parts list. It is recommended to assemble parts of the product while laying flat on the ground versus standing the item up to assemble the parts. If any parts are missing or damaged do not attempt assembly but contact our customer service center or return to place of purchase with purchase receipt.

Assembly of this product may require more than one person.

1-855-HDHoliday (1-855-434-6543 )

#### Pre-Operation

**CAUTION:** Grasp the plug to insert or remove from the power source.

Do not unplug by pulling on cord.

**CAUTION:** The lighting string on this product is rated at 19.2 Watts (0.16 Amps). Do not overload. Do not connect to another lighting string, decorative outfit or other electrical products. Before you use or re-use this product inspect it carefully. Discard or return to place of purchase with purchase receipt if the product has cuts, damage, frayed wire insulation on cords, cracks in the socket enclosures, loose connections, exposed copper wire or other obvious damage.

#### Care and Cleaning

- Carefully remove the product from wherever it is placed. This helps to avoid any undue strain or stress on the product connections and wires. If the product is placed somewhere other than the ground it should be well secured and flat.
- Carefully disassemble the unit taking caution not to cut any electrical wires.
- Wipe the unit with a damp cloth and allow the unit to dry before storing.
- Store the product neatly in a cool, dry location protected from sunlight.

#### Troubleshooting

- Ensure that the floor, ground or surface that the item sits on is flat and level
- Be sure to plug the item correctly to a wall outlet or a UL Listed Power Cord
- Ensure all parts are assembled properly per the Instruction Manual
- If the item does not light check for loose or broken bulbs and connections
- Do not plug into other electrical items
- If the item has multiple Light String Cords be sure to plug in all cords
- Check for Broken or Burned Out Fuse In Plug

### Guarantee

#### What is Covered

The product is intended for residential seasonal use for 90 days per year. This product is covered by a 90 days limited guarantee due to defects in material and workmanship. Return the product with purchase receipts to the location of purchase for refund within 90 days of purchase.

#### What is Not Covered

This warranty does not cover commercial use, normal wear and tear, products not used in accordance with directions provided on or with the product, burn out of bulbs or LEDs, batteries, products that have been subjected to unauthorized repair and/or modification and damage caused by shipping and improper handling, alterations, misuse, in store display models or accidents. Questions, problems, missing parts? Before returning to the store, call Home Accents Holiday Customer Service 8 a.m.-6 p.m., EST, Monday-Friday 1-855-HDHoliday (1-855-434-6543)



#### Thank you!

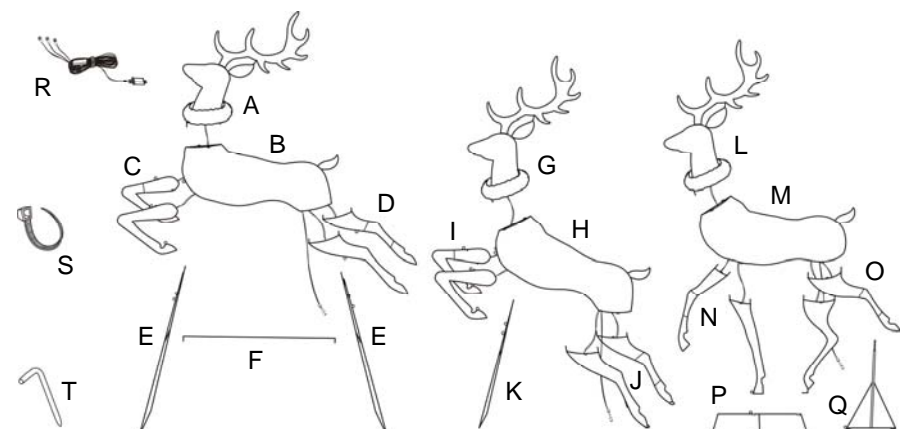
We appreciate the trust and confidence you have placed in Home Accents through the purchase of this S3 LED 279 WW 2D ELEGANT BROWN DEER FAMILY WITH IC . We strive to continually create quality products designed to enhance your home. Visit us online to see our full line of products available for your home improvement needs. Thank you for choosing Home Accents!

1-855-HDHoliday (1-855-434-6543)  
HOMEACCENTSHOLIDAY.COM

Parts List		
Locater	Name	Qty.
A	Antler/Head of Front Deer	1
B	Body of Front Deer	1
C	Front Leg of Front Deer	2
D	Hind Leg of Front Deer	2
E	Support Frame of Front Deer	2
F	Support Bar of Front Deer	1
G	Antler/Head of Middle Deer	1
H	Body of Middle Deer	1
I	Front Leg of Middle Deer	2
J	Hind Leg of Middle Deer	2
K	Support Frame of Middle Deer	1
L	Antler/Head of Hind Deer	1
M	Body of Hind Deer	1
N	Front Leg of Hind Deer	2
O	Hind Leg of Hind Deer	2
P	Base Stand of Hind Deer	1
Q	Support Frame of Hind Deer	1
R	Power button	1

Hardware List		
Locater	Name	Qty.
S	Plastic Tie	35
T	Ground Stake	12

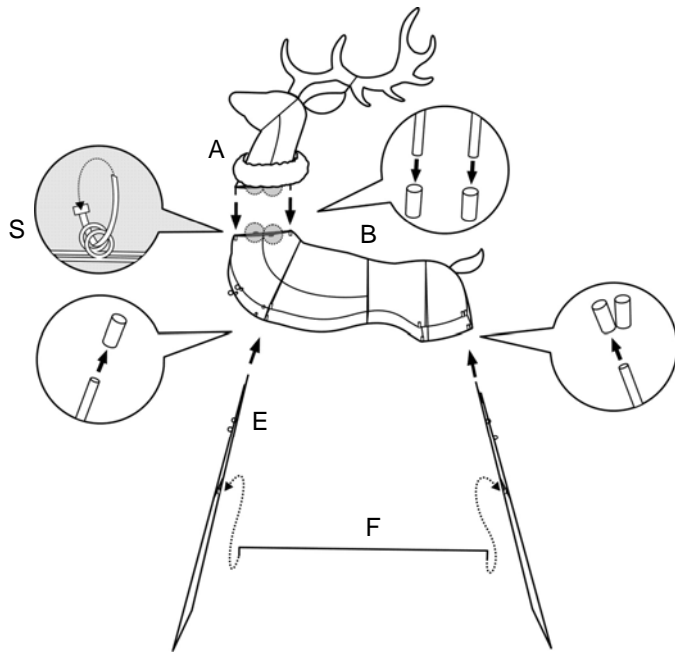
#### Diagram of Parts



# ASSEMBLY

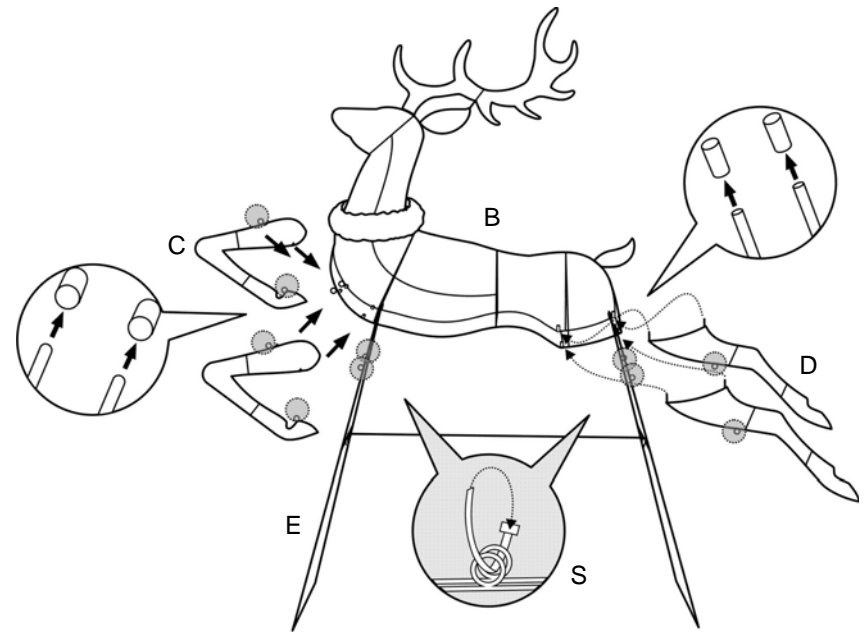
## 1 Assembling the Antler/Head & Support Frame of Front Deer

Place all the parts flat on the floor; Insert the connecting rods on the Antler/Head (A) and the Support Frame (E) into the connecting holes of the Body (B) and fasten at the connecting loops with Plastic Ties (S). Insert each hooked end of the Support Bar (F) into the matching holes of Front Support Frame and Hind Support Frame (E) respectively.



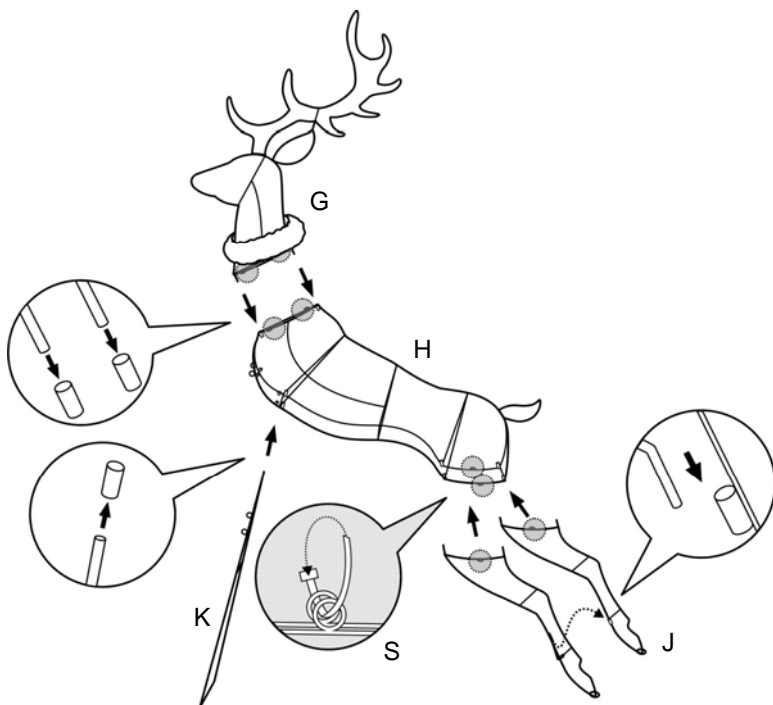
## 2 Assembling the Front Legs & Hind Legs of Front Deer

Insert the connecting rods of the Front Legs (C) and Hind Legs (D) into the matching holes of the Body (B) and fasten at the connecting loops with Plastic Ties (S). Secure at the connecting loops of Front Legs and Front Support Frame (E) with Plastic Ties (S), secure at the connecting loops of Hind Legs and Hind Support Frame (E) with Plastic Ties (S).



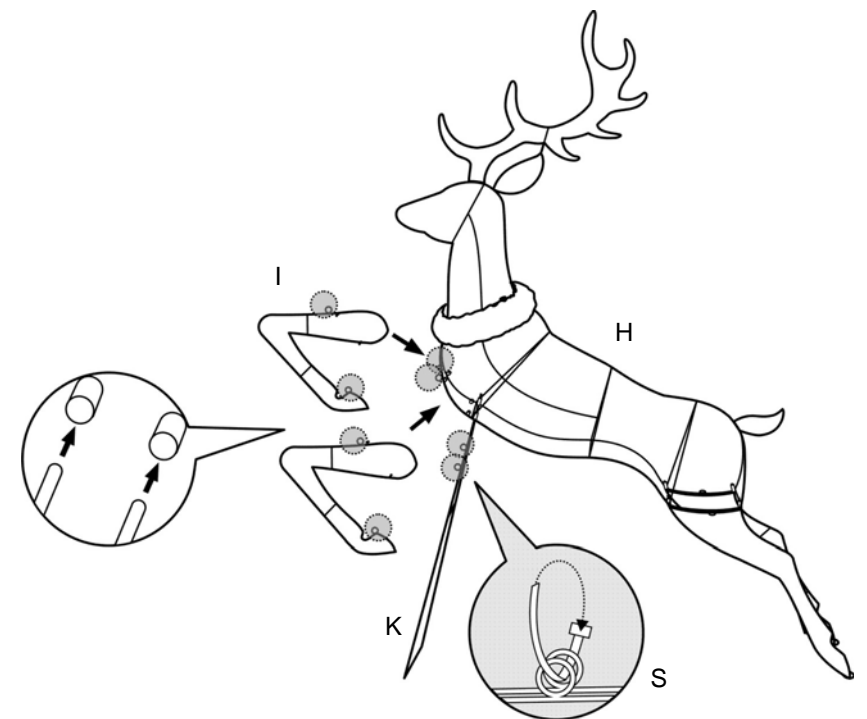
## 3 Assembling the Antler/Head & Hind Legs & Support Frame of Middle Deer

Insert the connecting rods on the Antler/Head (G), Hind Legs (J) and Support Frame (K) into the connecting holes of the Body (H) and fasten at the connecting loops with Plastic Ties (S). Insert the hooked end of the metal bars into the metal hole on the opposite Leg.



## 4 Assembling the Front Legs of Middle Deer

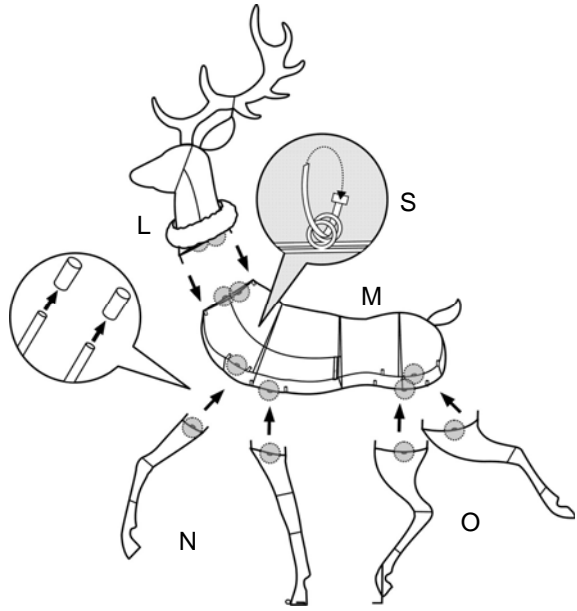
Insert the connecting rods of the Front Legs (I) into the connecting holes on the front of the Body (H) and fasten at the connecting loops with Plastic Ties (S). Secure at the connecting loops of Front Legs (I) and Support Frame (K) with Plastic Ties (S).



# ASSEMBLY

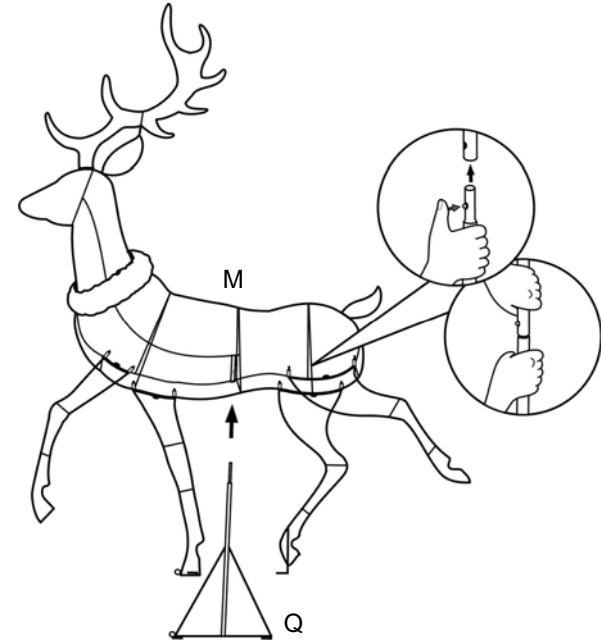
## 5 Assembling the Head & Front Legs & Hind Legs of Hind Deer

Insert the connecting rods of the Antler/Head (L), Front Legs (N) and Hind Legs (O) into the matching holes of the Body (M) and fasten at the connecting loops with Plastic Ties (S).



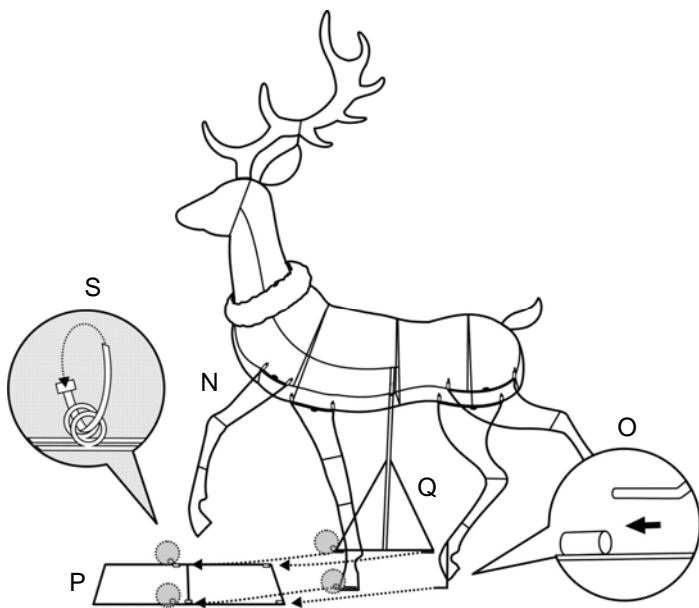
## 6 Assembling the Support Frame of Hind Deer

Insert the Support Pole of Support Frame (Q) through the Body of Hind Deer (M) and secure to the connecting rod on the Body with the built in locking pin.



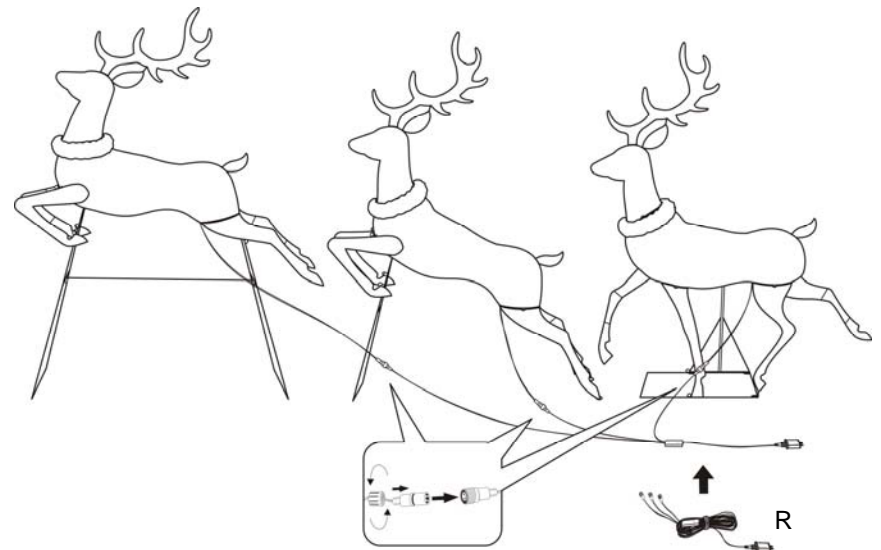
## 7 Assembling the Base Stand of Hind Deer

Insert the connecting rods on the bottom of Front Leg (N), Hind Leg (O) and Support Frame (Q) into the matching holes of Base Stand (P) and fasten at the connecting loops with Plastic Ties (S).



## 8 Assembling the Power Plug

Connect the power cord plugs together and secure with the built-in cap screw. Press the power button (R), Light will turn on. Press the power button again it will turn off.



## 9 Assembling the Ground Stakes

Place the Ground Stakes (T) over the metal frame at each hoof of three Deers then into the ground firmly.

