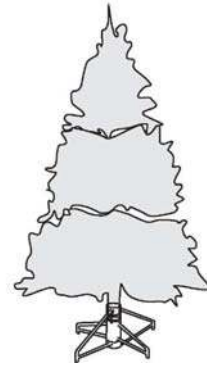




# 7.5ft Dunland Fir LED Tree

SKU# 1007619306



## Safety Information

# IMPORTANT SAFETY INSTRUCTIONS

When using electrical products, basic precautions should always be followed including the following:

## a) READ AND FOLLOW ALL SAFETY INSTRUCTIONS.







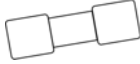


- b) This product is for indoor use only. The electrical rating 0.64 A 120 V 60 Hz.
- c) Do not use this product outdoors.
- d) This seasonal use product is not intended for permanent installation or use.
- e) Do not mount or place near gas or electric heaters, fireplace, candles or other similar sources of heat.
- f) Do not secure the wiring of the product with staples or nails, or place on sharp hooks or nails.
- g) Do not let lamps rest on the supply cord or on any wire.
- h) Unplug the product when leaving the house, or when retiring for the night, or if left unattended.
- i) This is an electric product – not a toy! To avoid risk of fire, burns personal injury and electric shock it should not be played with or placed where small children can reach it.
- j) Do not use this product for other than its intended use.
- k) Do not hang ornaments or other objects from cord, wire, or light string.
- l) Do not close doors or windows on the product or extension cords as this may damage the wire insulation.
- m) Do not cover the product with cloth, paper or any material not part of the product when in use.
- n) Do not move the tree by pulling the tree tips or tree branches.
- o) This product contains an extension cord with a polarized plug (one prong is wider than the other) as a feature to reduce the risk of electrical shock. This plug will fit in a polarized outlet only one way. If the plug does not fit fully in the outlet, reverse the plug. If it still does not fit, contact a qualified electrician. Do not use with an extension cord unless plug can be fully inserted. Do not alter or replace the plug.
- p) This product is equipped with push-in type lamps. Do not twist lamps.
- q) This product employs overload protection (fuse). A blown fuse indicates an overload or short-circuit situation. If the fuse blows, unplug the product from the outlet. Also unplug any additional strings or products that may be attached to the product. Replace the fuse as per the user servicing instructions (follow product marking for proper fuse rating) and check the product. If the replacement fuse blows, a short-circuit may be present and the product should be discarded.
- r) Read and follow all instructions that are on the product or provided with the product.

## s) SAVE THESE INSTRUCTIONS.

# CAUTION! – ALWAYS UNPLUG YOUR TREE FROM ITS POWER SOURCE BEFORE ASSEMBLING OR DISASSEMBLING.

## Pre-Assembly

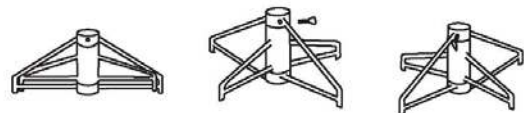
### Package Contents

A. Top Section Qty: 1 	B. Middle Section Qty: 1 	C. Bottom Section Qty: 1 
D. Stand with an eye bolt Qty: 1 	E. Power Cord Qty: 1 	F. Remote Control Qty: 1 
G. Fuse Qty: 1 	H. Rivet Qty: 2 	I. Replacement Bulb Qty: 8 

## Assembly

### Assembling the tree stand

- Step 1. Choose a location near a wall outlet.
- Step 2. Open the stand to a 90 degree angle until the hole lines up with the hole on the tube.
- Step 3. Screw an eye bolt into the hole.



### Assembling the tree

Please remove protective covers from the base of the pole for each tree section before assembling.

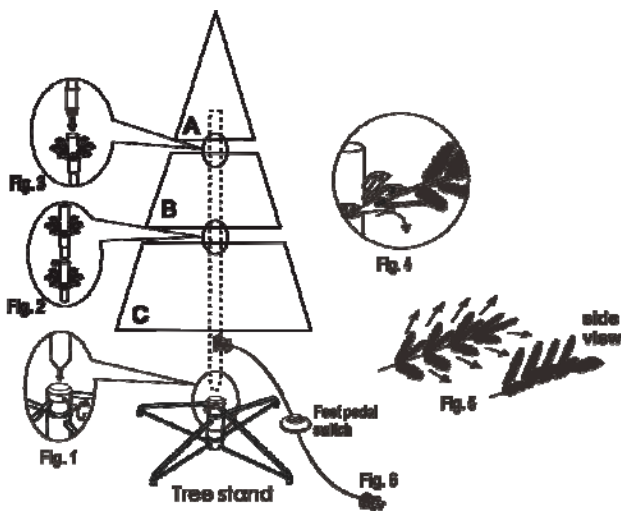
- Step 1. Carefully insert bottom section (C) of tree into tree base and tighten the screw. (See Fig. 1)
- Step 2. Insert the middle section (B) of the tree into the bottom section (C). (See Fig. 2)
- Step 3. Insert the top section (A) into the middle section (B). (See Fig. 3)
- Step 4. Allow branches to fall into place or gently pull branches up and out. When adjusting branches be sure that all wires are free of branch hinges. (See Fig. 4)

Step 5. Shape the branches. Starting with tips closest to the pole, shape one tip to the right, one to the left and one at the center of the main stem. Repeat pattern for each branch. (See Fig. 5)

Step 6. Plug the well-connected power cord from the tree section (C) into a proper outlet. Please note this tree comes with a foot pedal switch and remote control for easy illumination and changing functions. This tree is Color Changing, the 8 lighting options available are:

1. Warm White Steady
2. Warm White Flashing
3. Warm White Slow Fade
4. Multi Steady
5. Multi Flashing
6. Multi Slow Fade
7. Warm White-Multi Sequential
8. Warm White-Multi Color Changing

These functions can be changed by pressing the foot pedal switch or using the remote control. Please see the instructions of remote control below.

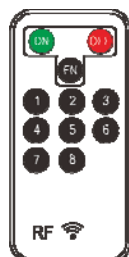


## Instruction of remote control

Please note this tree has a remote control.  
Please pull out the insulation tape from the remote control, before starting to use it.



1. Press Fn button, the function below cycle. Press the number key, select from the following corresponding lighting functions:  
Function 1: Warm White Steady  
Function 2: Warm White Flashing  
Function 3: Warm White Slow Fade  
Function 4: Multi Steady  
Function 5: Multi Flashing  
Function 6: Multi Slow Fade  
Function 7: Warm White-Multi Sequential  
Function 8: Warm White-Multi Color Changing



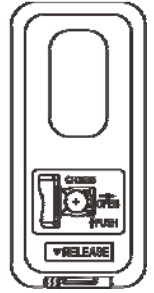
There is memory mode on function adjustment.

If the remote control does not work, check whether the battery of the remote control is out of power.

To replace the remote control battery:

1. Replace with a new button cell "CR2025" (3 volt) into the compartment.

**CAUTION:** DO NOT DISPOSE OF BATTERIES IN FIRE. BATTERIES MAY EXPLODE OR LEAK.



## Operation

### Turning on the tree

- Step 1. Plug the well-connected power cord from the tree section (C) into a proper outlet.

## Maintenance

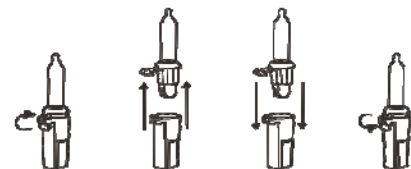
Replace the fuse.

1. Fuse replacement of power supply cord from bottom section (C) (replaceable 3 amp, 125 volt fuse is located in spare parts bag): This plug will fit in a polarized outlet only one way. If the plug does not fit fully in the outlet, reverse the plug. If it still does not fit, contact a qualified electrician. Do not use with an extension cord unless plug can be fully inserted. Do not alter or replace the plug.
  - a) Grasp plug and remove from the receptacle or other outlet device. Do not unplug by pulling on cord.
  - b) Open fuse cover. Slide open fuse access cover on top of attachment plug towards blades.
  - c) Remove fuse carefully.
  - d) Risk of fire. Replace fuse only with 3 Amp, 125 Volt fuse (provided with product).
  - e) Close fuse cover. Slide closed the fuse access cover on top of attachment plug.
  - f) Risk of fire. Do not replace attachment plug. Contains a safety device (fuse) that should not be removed. Discard product if the attachment plug is damaged.



Replace the lamp.

- a) Grasp plug and remove from the receptacle or other outlet device. Do not unplug by pulling on cord.
- b) Unlock the burned out LED bulb by lifting the hook and pulling both the bulb and plastic base straight out of the bulb holder. Do not twist bulbs.
- c) Replace burned out bulb with 3.0 volt, 20 mA LED type bulb ONLY. (Replacement bulbs included)
- d) Lock the LED bulb.

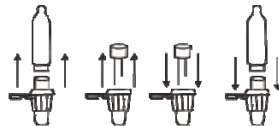


## CAUTION

1. To reduce the risk of overheating, replace burned-out lamps promptly. Use 3.0 Volt, 20 mA LED lamps only.
2. Risk of fire. This product does not contain lamp shunts, which allow the product to operate if one lamp burns out. Replace lamps only with the spare lamps provided with this product.

If the new lamp base does not fit in lampholder, follow the steps below before step c.

1. Pull the reflector out.
2. Remove the base of burned out lamp by straightening lamp leads and gently pulling lamp out.
3. Thread leads of new lamp through hole in old base with one lead in each hole (always match the long lead of new lamp to the hook of lamp base.)
4. After bulb is fully inserted, bend each lead up so that the leads will touch the contacts inside the bulb holder.
5. Insert the reflector into the base.



**CAUTION!** — ALWAYS UNPLUG YOUR TREE FROM ITS POWER SOURCE BEFORE ATTEMPTING FUSE AND BULB REPLACEMENT.

## Care and Cleaning

- Step 1. Remove all ornaments and decorations.
- Step 2. Unplug the cord from the wall outlet.
- Step 3. Gently lift the tree top straight up to remove from the center section and fold all branches towards the pole.
- Step 4. Repeat this step for the center and bottom tree sections.
- Step 5. Carefully place all tree sections into a shipping box and tape it shut.
- Step 6. Store your tree in a cool, dry place away from sunlight.

## Use and Care Instructions

- a) Before using or reusing, inspect product carefully. Discard any products that have cut, damaged, or frayed wire insulation or cords, cracks in the lampholders or enclosures, loose connections, or exposed copper wire.
- b) When storing the product, carefully remove the product from wherever it is placed, including tree, branches, or bushes, to avoid any undue strain or stress on the product conductors, connections, and wires.
- c) When not in use, store neatly in a cool, dry location protected from sunlight.

## CAUTION

- a) To reduce the risk of electric shock, use only with the power-supply cord provided or with a cord set intended for indoor use.
- b) Do not use a cracked, frayed, or damaged cord. Inspect the cord periodically.
- c) Do not abuse cord – Do not carry product by the cord or yank or pull it to disconnect from the outlet.
- d) Disconnect the product from the outlet when not in use.

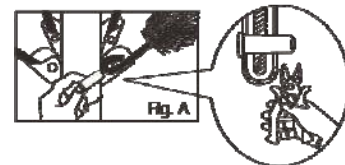
## Troubleshooting

Problem	Solution
The tree does not light	Ensure that all tree sections are connected into each other well. Make sure the plug of power supply extension cord from the bottom section (C) is securely inserted into a working electrical outlet.
	Check for blown fuses at the power cord plug. Replace as needed with the replacement fuses provided.
	Check for loose, broken, or missing bulbs and replace as needed with the replacement bulbs provided.
	If you are still experiencing problems with the tree please call 1-855-HDHoliday (1-855-434-6543) for instructions.

## Loose branches

If a branch of the tree falls off, follow the steps below to reinstall it with a spare rivet (H).

- 1) Place the branch into the slot of the bracket.
- 2) Insert a spare rivet through the hole and use diagonal pliers (not included) to crimp the rivet. (See Fig. A)



**This device complies with Part 15 of the FCC Rules.**

**Operation is subject to the following two conditions: (1) This device may not cause harmful interference, and (2) this device must accept any interference received, including interference that may cause undesired operation.**

**Warning:** Please note that changes or modifications of this product is not expressly approved by the party responsible for compliance could void the user's authority to operate the equipment.

**NOTE:** This equipment has been tested and found to comply with the limits for a Class B digital device, pursuant to Part 15 of the FCC Rules. These limits are designed to provide reasonable protection against harmful interference in a residential installation. This equipment generates, uses and can radiate radio frequency energy and, if not installed and used in accordance with the instructions, may cause harmful interference to radio communications.

However, there is no guarantee that interference will not occur in a particular installation. If this equipment does cause harmful interference to radio or television reception, which can be determined by turning the equipment off and on, the user is encouraged to try to correct the interference by one or more of the following measures:

- Reorient or relocate the receiving antenna.
- Increase the separation between the equipment and receiver.
- Connect the equipment into an outlet on a circuit different from that to which the receiver is connected.
- Consult the dealer or an experienced radio/TV technician for help.

## WARRANTY

### 3-year Limited Warranty

This product carries a three (3) year warranty against defects in workmanship and materials. This product is not guaranteed against wear or breakage due to misuse and/or abuse.

Date Code: 04012022\_2003186

Importer: The Home Depot

Address: 2455 PACES FERRY ROAD ATLANTA, GA 30339

Tel: 1-855-HDHoliday (1-855-434-6543)

Model No. TMP7.5-6(0.64)