



SKU#1007 315 747

# SET-UP AND OPERATING INSTRUCTIONS FOR 3FT LED PUMPKIN TWINS INSTRUCTION MANUAL



**Questions, problems, missing parts?** Before returning the product to your local Home Depot store, please call our Home Accents Holiday customer care department at 1-855-HDHoliday (1-855-434-6543), Monday-Friday, 8am-7pm EST, and Saturday, 9am-6pm, EST or email the manufacturer at info@pan-asian.com.hk.

**WARNING:** This is not a toy and is for decorative purposes only. For indoor use only. This item is not intended for use by children under the age of 14 years. Do not place product near an open fire or heat source such as a radiator, stove, etc.

### Part List

<p><b>A.</b> Girl Pumpkin Body</p>  <p>X 1</p>	<p><b>B.</b> Girl Foot Support</p>  <p>X 1</p>	<p><b>C.</b> Boy Pumpkin Body and Foot Support</p>  <p>X 1</p>
---	---	---

## READ CAREFULLY & RETAIN FOR FUTURE REFERENCE!

Note: Actual Item May Vary Slightly from Photo

**WARNING:** Changes or modifications to this unit not expressly approved by the party responsible for compliance could void the user's authority to operate the equipment.

**NOTE:** This equipment has been tested and found to comply with the limits for a Class B digital device, pursuant to Part 15 of the FCC Rules. These limits are designed to provide reasonable protection against harmful interference in a residential installation. This equipment generates, uses and can radiate radio frequency energy and, if not installed and used in accordance with the instructions, may cause harmful interference to radio communications. However, there is no guarantee that interference will not occur in a particular installation. If this equipment does cause harmful interference to radio or television reception, which can be determined by turning the equipment off and on, the user is encouraged to try to correct the interference by one or more of the following measures:

- Reorient or relocate the receiving antenna.
- Increase the separation between the equipment and receiver.
- Connect the equipment into an outlet on a circuit different from that to which the receiver is connected.
- Consult the dealer or experienced radio/TV technician for help.

This device complies with part 15 of the FCC rules. Operation is subject to the following two conditions: "(1) This device may not cause harmful interference, and (2) this device must accept any interference received, including interference that may cause undesired operation."

Responsible party for FCC: Pan Asian Creations Limited.  
Address: PO Box 165, New Hartford, NY 13413  
For FCC email: info@pan-asian.com.hk

1

### BATTERY USAGE:

- ADULT SUPERVISION IS RECOMMENDED WHEN CHANGING BATTERIES.
1. Do not mix old and new batteries.
  2. Do not mix alkaline, standard (carbon-zinc) or rechargeable (nickel-cadmium) batteries.
  3. Alkaline batteries are suggested for longer life.
  4. Exhausted batteries are to be removed from the product.
  5. Dispose of exhausted batteries with care.
  6. Do not dispose of batteries in fire, batteries may explode or leak.

**CAUTION:** Please remove batteries if their power is consumed or if the product is to be left unused for a long period of time.  
**RECYCLE YOUR BATTERIES:** To help protect our environment, we recommend that all batteries be recycled. You can find a local recycling center by going to: <http://earth911.com/hazardous/single-use-batteries/> Or, in the United States call 1-800-CLEANUP for a recycling location near you.

### SAFETY INSTRUCTIONS:

1. All cautions in these operating instructions should be followed completely.
2. Do not use near water, such as bathtub, laundry tub, kitchen sink, wet basement or swimming pool, etc.
3. Do not display figure near any heat source such as radiators, stoves, fireplaces, etc.
4. Display should be serviced by a qualified service person only. Do not attempt to service this unit beyond what is described in the operating instructions.
5. Take extra care when displaying any figure that may contain small parts around small children.
6. Use of this decoration should always be supervised by an adult.
7. Remove batteries when not in use.

03302022\_2008486  
Printed in China

2

### ASSEMBLY:



Front



4



5

Fully Assembled Product

Back

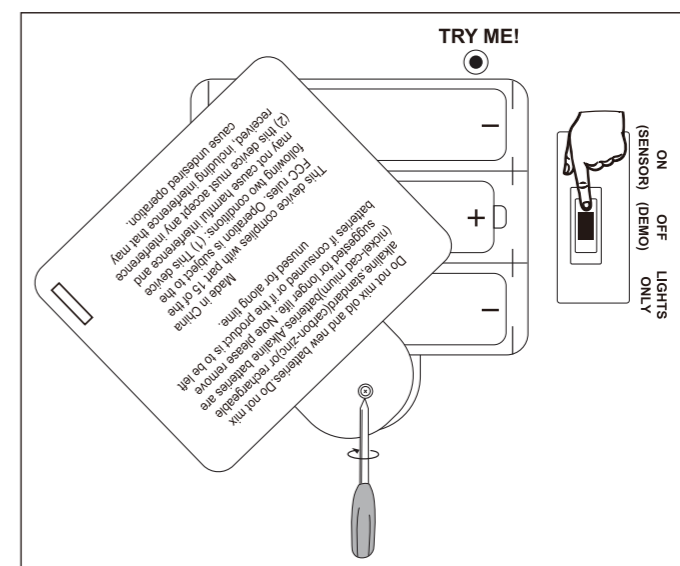
### BATTERY REPLACEMENT & ITEM FUNCTION:

- Battery-powered. Requires 3 "AA" batteries (batteries are included).
1. Remove the battery case cover, which is located on the back of the boy pumpkin twin. Using a small screw driver, unscrew the safety screw and then remove the battery compartment cover (as show in diagram).
  2. Clean the battery contacts and also those of the device prior to battery installation.
  3. Insert new 3 "AA" batteries with correct polarity and replace the battery case cover and safety screw.
  4. The ON (SENSOR) / OFF (DEMO) / LIGHTS ONLY function control switch is located on the control box on the back of the boy pumpkin twin. Slide the switch into the "ON (SENSOR)" position for sound sensor activated synchronized LED light up eyes, moving mouths, and sound. Slide the switch into the "LIGHTS ONLY" position to activate continuous LED light up eyes only. Slide the switch into the "OFF (DEMO)" position to deactivate the product and/or to activate the TRY ME feature. To activate the TRY ME, press the button on the sleeve of the boy pumpkin twin for a short synchronized LED lights, animation, and sound demonstration. NOTE: The TRY ME Jack is used for the Large Try Me Button/Pedal for in-store demonstration purposes only, which is not included.
  5. Replace the batteries if the movement becomes slow, LED's become dim or sound is distorted or faint.

### TROUBLE SHOOTING:

Problem	Solution
The product does not work	<ol style="list-style-type: none"> <li>1. Check if the positive and negative terminals of the battery are installed correctly.</li> <li>2. Check whether the battery is drained. Replace the new batteries and try again.</li> </ol>
The Sound Sensor does not work	<ol style="list-style-type: none"> <li>1. Check to make sure that the ON (SENSOR) / OFF (DEMO) / LIGHTS ONLY switch is in the "ON (SENSOR)" position.</li> <li>2. Check if the triggered sound is too far from the product, please do not exceed a distance of 39.5 in (100cm) between the sound source and the pumpkin twins.</li> <li>3. Check if the triggered sound is too small, please activate the product with a triggered sound of more than 90 decibels.</li> </ol>

If you are still experiencing problems with the product please call 1-855-HDHoliday (1-855-434-6543) for further assistance.



6