



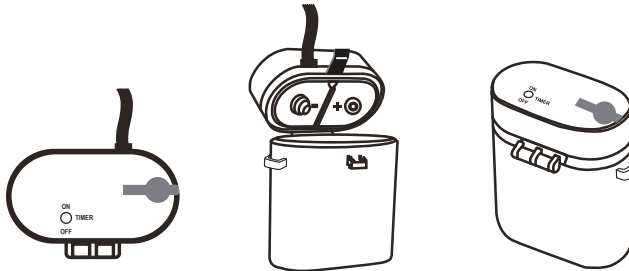
NEED HELP? DO NOT RETURN TO STORE.

CALL: 1-855-HDHoliday (1-855-434-6543)

Monday - Friday 8am to 7pm EST, Saturday 9am to 6pm EST

INSTALLATION:

1. Carefully take the product out of the box, and locate the battery control box.
2. Open the battery box, and insert 2 D-size batteries with correct polarities (+/-) as indicated.



Timer Functions:

This battery-operated control box comes with a preset timer function. Simply press the TIMER button, and the lights will automatically stay ON for 6 hours and then OFF for 18 hours.

⚠ WARNING

1. For Indoor and outdoor use.
2. Do not cover this product with any material when in use.
3. Dispose of all exhausted batteries properly.
4. Non-rechargeable batteries should not be recharged.
5. Always purchase the correct size and grade of battery most suitable for the intended use.
6. Always replace the whole set of batteries at one time, taking care not to mix old and new batteries or batteries of different types.
7. Ensure the batteries are installed correctly with regard to polarity (+ and -).
8. Dispose of used batteries promptly.
9. Do not mix alkaline, carbon-zinc, lithium, or re-chargeable (Nickel-Cadmium or other types) batteries.
10. Dispose of batteries properly by following directions on batteries.
11. Replace only with D size batteries.
12. Do not ingest batteries. Small parts, keep away from children.
13. For recycling and disposal of batteries to protect the environment, please check the internet or your local phone directory for local recycling centers and/or follow local government regulations.
14. Remove batteries when not used for an extended period of time, or when depleted.
15. Clean the battery contacts prior to battery installation.
16. Do not dispose of batteries in fire. Batteries may explode or leak.

IMPORTANT SAFETY INSTRUCTIONS:

When using electrical products, basic precautions should always be followed including the following:

a) READ AND FOLLOW ALL SAFETY INSTRUCTIONS

- b) Do not use the seasonal products outdoors unless marked suitable for indoor and outdoor use.
- c) This seasonal use product is not intended for permanent installation or use.
- d) Do not mount or place near gas or electric heaters, fireplace, candles or other similar source of heat.
- e) Do not secure the wiring of the product with staples or nails, or place on sharp hooks or nails.
- f) Do not let lamps rest on the supply cord or on any wire.
- g) Turn off the product when leaving the house, when retiring for the night, or if left unattended.
- h) This is an electric product - not a Toy! To avoid risk of fire, burns, personal injury and electric shock, it should not be played or placed where small children can reach it.
- i) Do not use this product for other than its intended use.
- j) Do not hang ornaments or other objects from cord, wire, or light string.
- k) Do not close doors or windows on the product or extension cords as this may damage the wire insulation.
- l) Do not cover the product with cloth, paper or any materials not part of the product when in use.
- m) The lamps of this product are not replaceable. Do not attempt to change or modify the lamps.
- n) Read and follow all instructions that are on the product or provided with the product.

o) SAVE THESE INSTRUCTIONS

USE AND CARE INSTRUCTIONS

- a) When the product is placed on a live tree, the tree should be well maintained and fresh. Do not place on live trees in which the needles are brown or break off easily, Keep the tree holder filled with water.
- b) If the product is placed on a tree, the tree should be well secured and stable.
- c) Before using or reusing, inspect product carefully. Discard any products that have cut, damaged, or frayed wire insulation or cords, cracks in the lampholders or enclosures, loose connections, or exposed copper wire.
- d) When storing the product, carefully remove the product from wherever it is placed, including tree branches or bushes, to avoid any undue strain or stress on the product conductors, connections, and wires.
- e) When not in use, store neatly in a cool,dry location protected from sunlight.

⚠ CAUTION

To reduce the risk of fire and electric shock:

- a) Do not install on trees having needles, leaves or branch covering of metal or materials which look like metal.
- b) Do not mount or support strings in a manner that can cut or damage wire insulation.