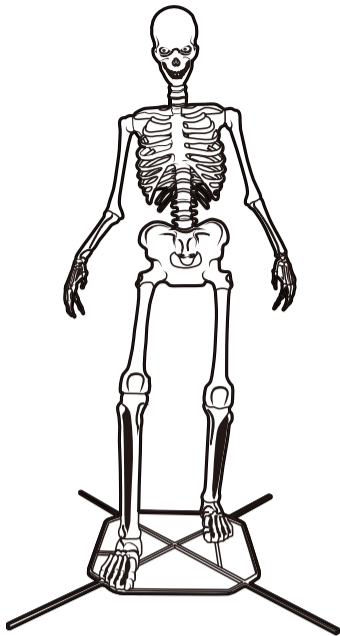


12FT SKELLY WITH SERVO



ASSEMBLY REQUIRES AT LEAST 2 ADULTS, 3 ADULTS ARE RECOMMENDED. PLEASE FOLLOW THE STEP BY STEP GUIDE AND ENJOY YOUR 12 FOOT SKELETON!

IMPORTANT TIPS:

- If not functioning properly (eyes don't light up), ensure that cables are connected to their corresponding cable as shown in the instruction sheet (See steps 5.1 and 7.2).
- If item does not activate when turned on, ensure that the adapter is plugged into a live outlet.
- If the Remote Control is not working. Make sure you are within a 20 ft. range of the 12ft Skelly with Servo. If the issue persists, replace the batteries in the Remote Control with fresh batteries (2 x 1.5V AAA). If there is still a problem with your Remote Control, contact customer service.

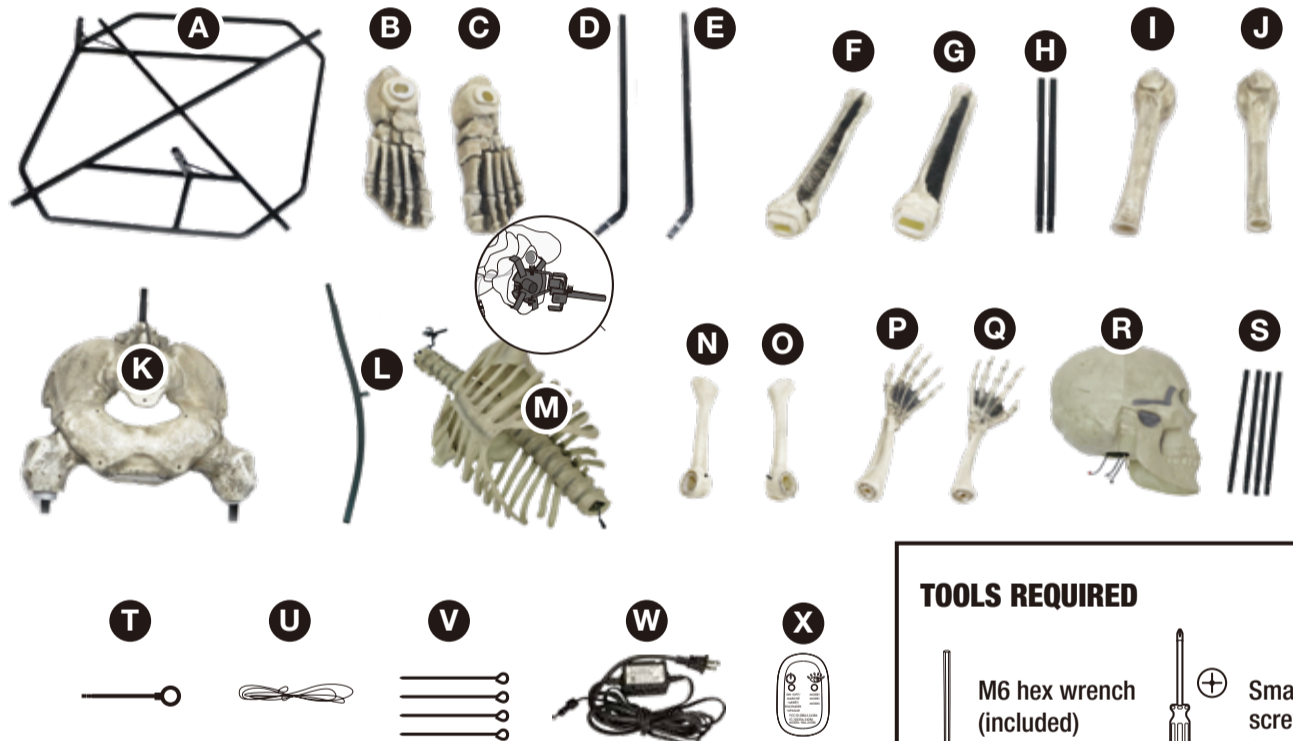
Questions, problems, missing parts? Before returning to the store, please have a copy of your receipt ready and email the SVI customer experience team (customerservice@svius.com) within 90 days of the date of purchase or call Home Accents Holiday Customer Service 8 a.m. - 7 p.m., EST, Monday - Friday, 9 a.m. - 6 p.m., EST, Saturday

1-855-HD-HOLIDAY (1-855-434-6543)
HOMEDEPOT.COM

PARTS LIST

- A. Base x 1
- B. Right Foot x 1
- C. Left Foot x 1
- D. Right Lower Support Pole x 1
- E. Left Lower Support Pole x 1
- F. Right Shin x 1
- G. Left Shin x 1
- H. Upper Support Pole x 2
- I. Right Femur x 1
- J. Left Femur x 1
- K. Pelvis x 1
- L. Spinal Support x 1
- M. Rib Cage with Servo Head Bracket x 1
- N. Right Humerus x 1
- O. Left Humerus x 1
- P. Right Forearm x 1
- Q. Left Forearm x 1
- R. Head x 1
- S. Base Stabilizer x 4
- T. Loop Screw x 1
- U. Cable x 1
- V. Stake x 4
- W. Adapter * x 1
- X. Remote Control x 1

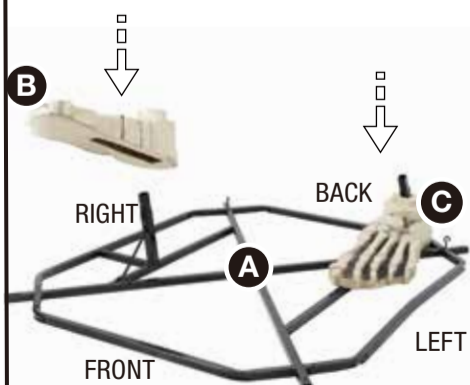
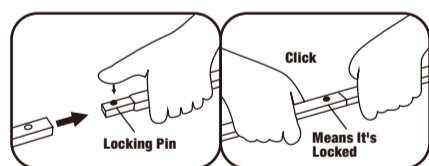
Power Adapter * Spec
Input: 120V~60Hz
Output: 5.9V 3A
Wattage: 17.7W



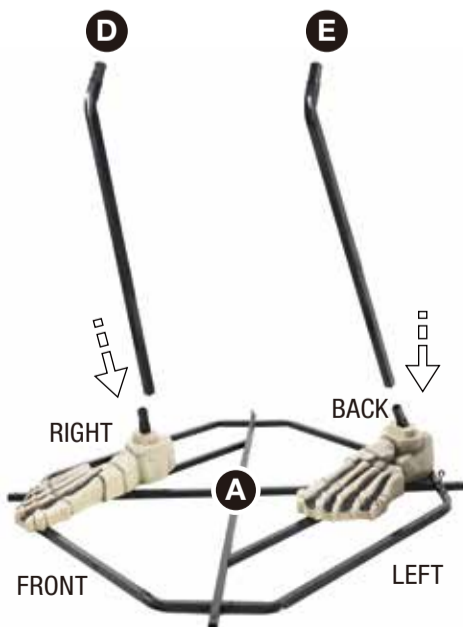
TOOLS REQUIRED

- M6 hex wrench (included)
- Small phillips screwdriver (not included)

NOTE: Throughout the instructions, Right and Left are relative to the character. Hex wrench included for assembly.

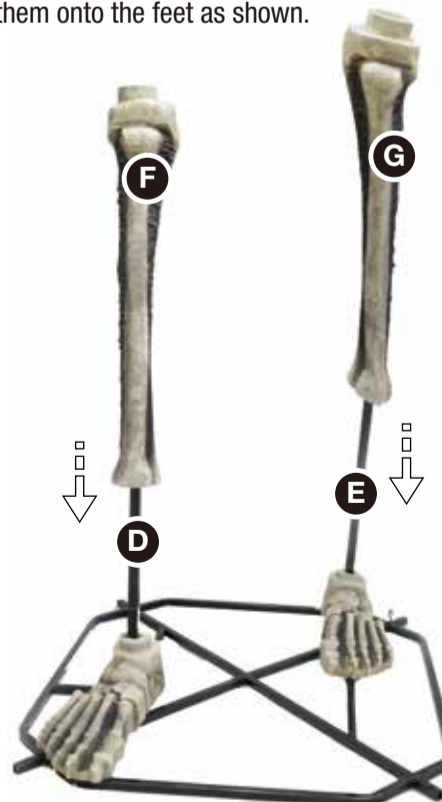


1.1

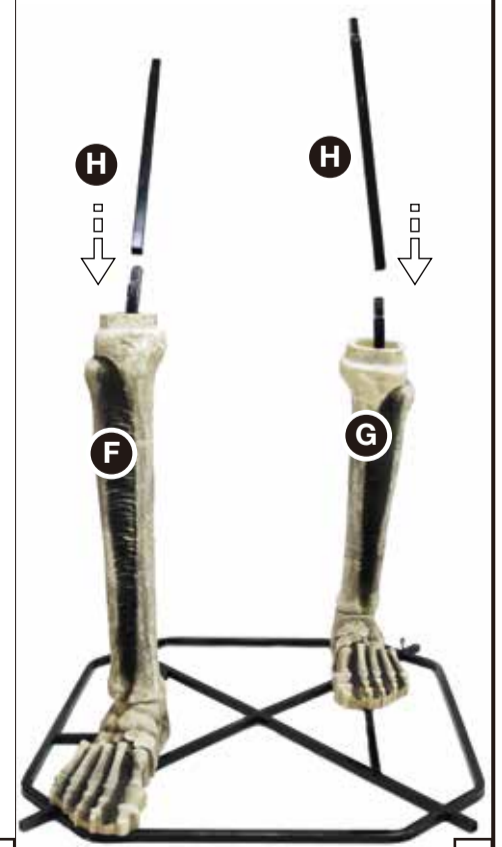


1.2

NOTE: Slide the two shins over the lower support poles and fit them onto the feet as shown.

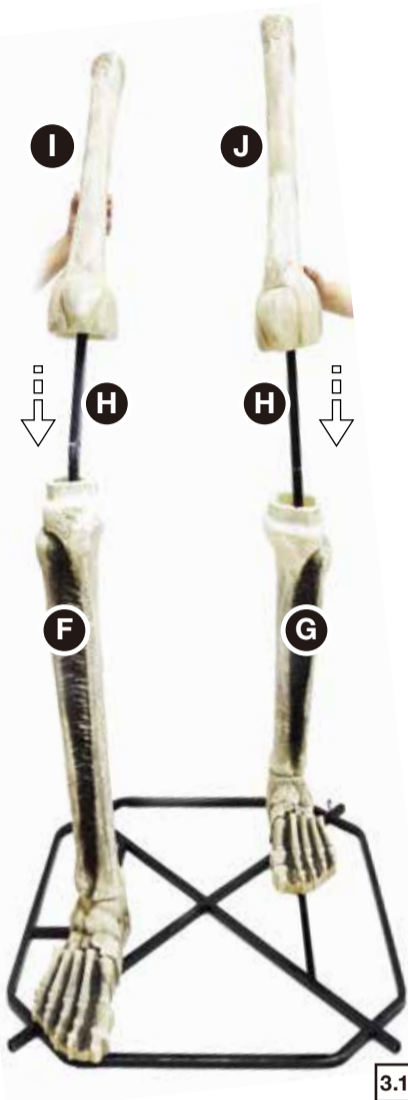


2.1



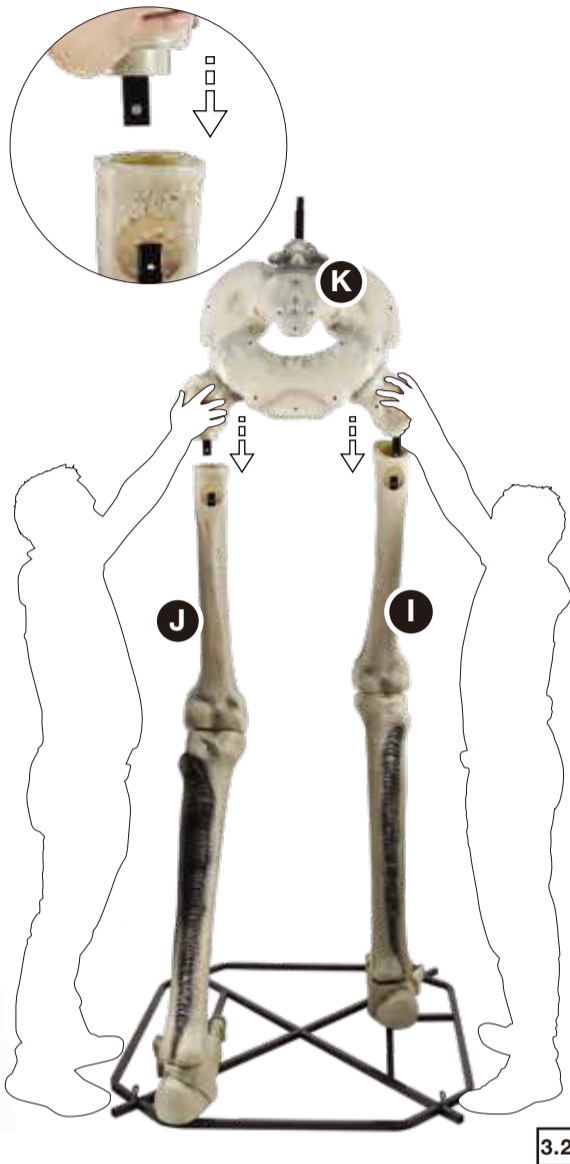
2.2

NOTE: Slide the two femurs onto the upper support poles and then fit them onto the shins as shown.



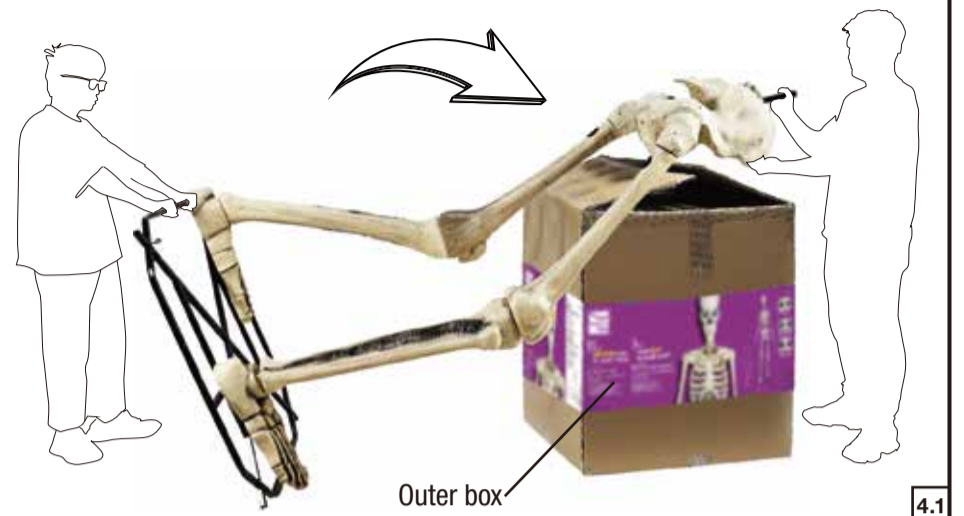
3.1

NOTE: A ladder and more than 2 people are advised when assembling the (K) Pelvis to the (H) Upper Support Poles and the (I,J) Femurs. If there is difficulty in assembling the (K) Pelvis, try adjusting the upper legs until they are properly aligned.

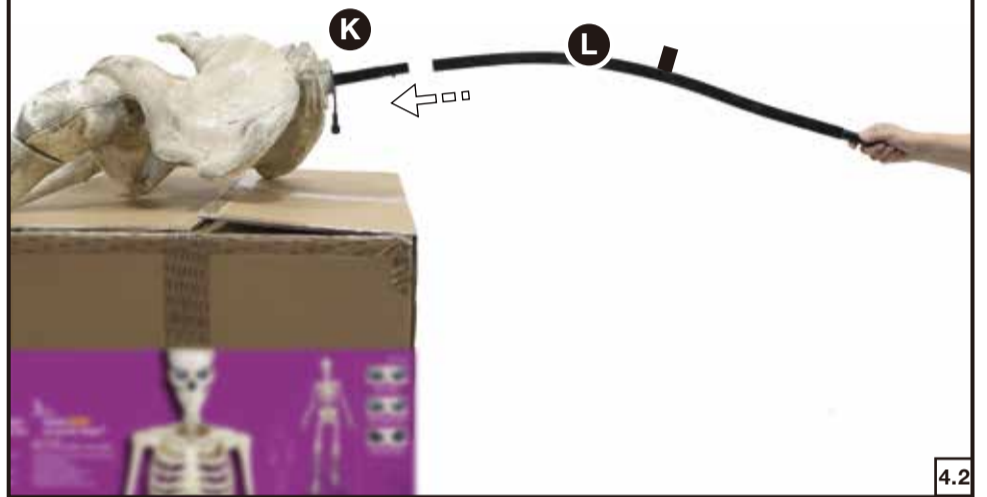


3.2

NOTE: Lean the skeleton against the box it came with for easier assembly. 3 adults are strongly recommended for this step.

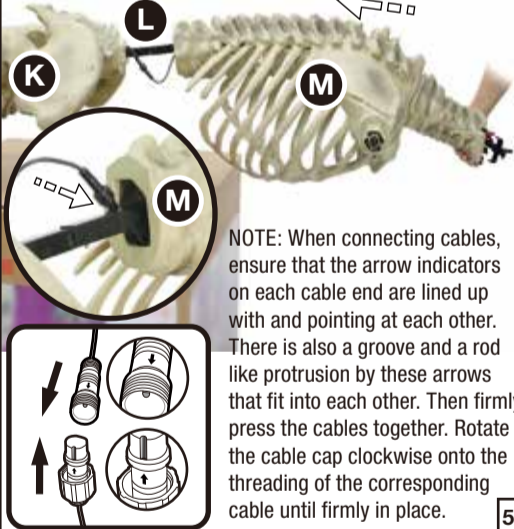


4.1



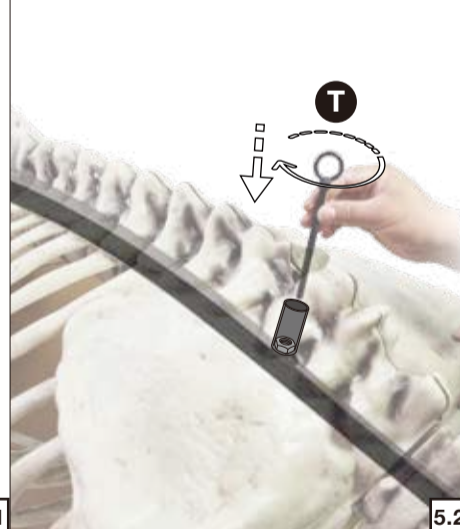
4.2

After connecting the wires, hide the excess inside the available cavity at the bottom of the (M) Rib Cage.



5.1

NOTE: Screw the loop into the area inside of the spine as shown.

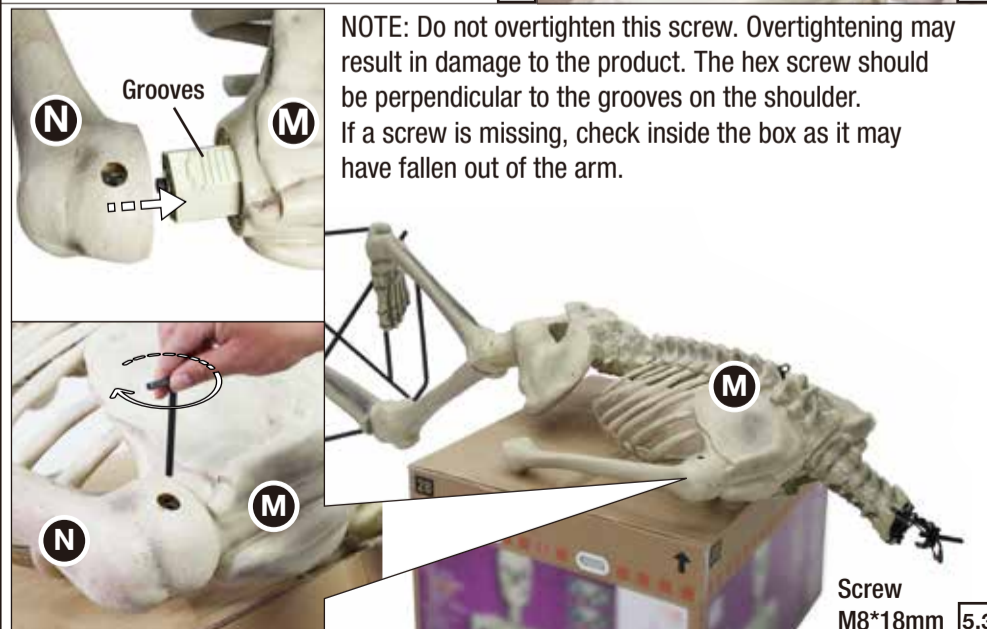


5.2

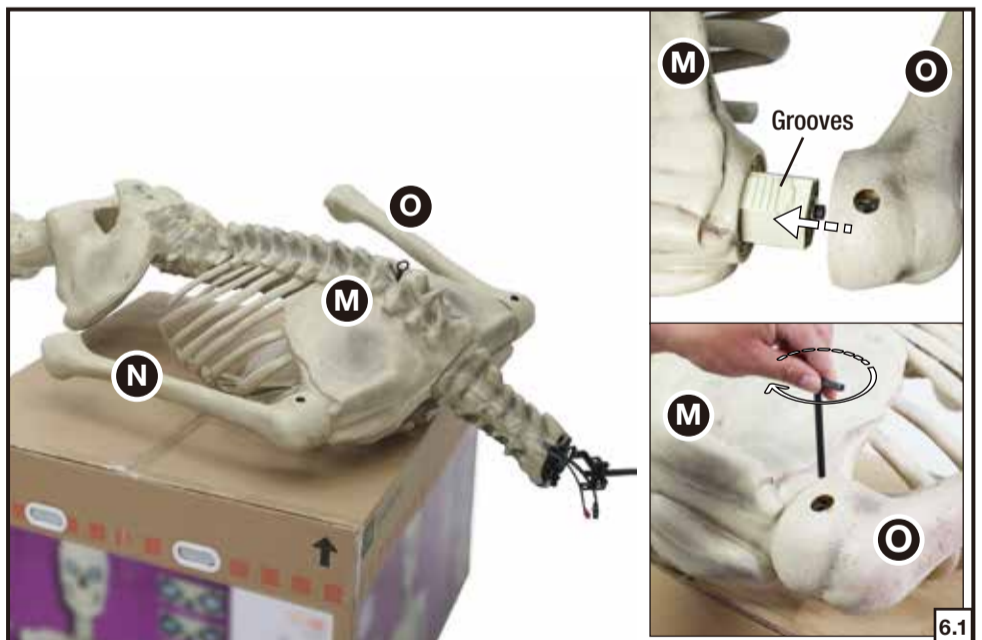
NOTE: When connecting cables, ensure that the arrow indicators on each cable end are lined up with and pointing at each other. There is also a groove and a rod like protrusion by these arrows that fit into each other. Then firmly press the cables together. Rotate the cable cap clockwise onto the threading of the corresponding cable until firmly in place.



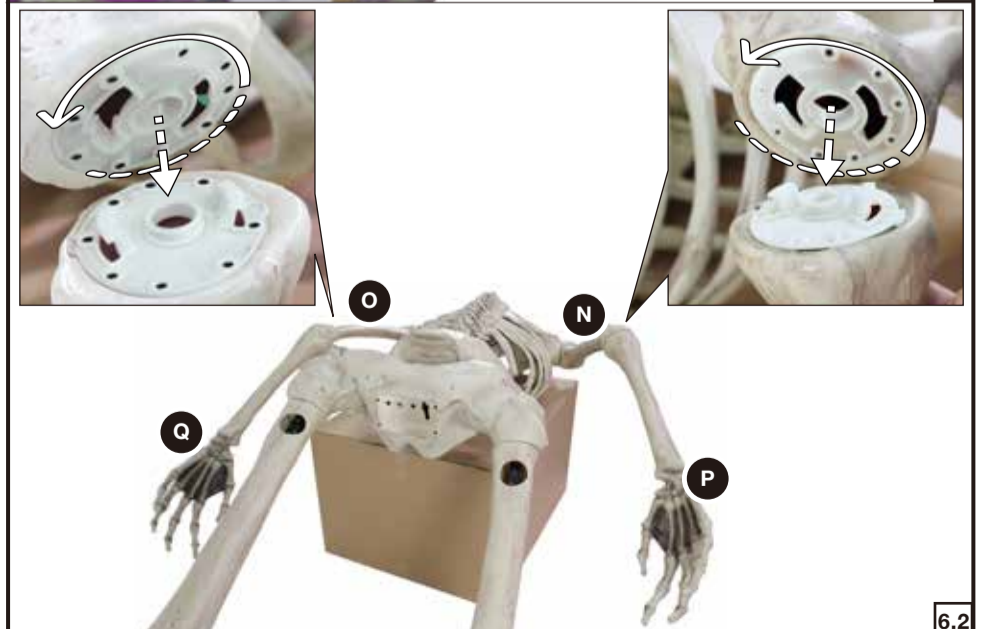
NOTE: Do not overtighten this screw. Overtightening may result in damage to the product. The hex screw should be perpendicular to the grooves on the shoulder. If a screw is missing, check inside the box as it may have fallen out of the arm.



Screw M8*18mm 5.3



6.1



6.2

CAUTION: Cable may have sharp ends, use caution when assembling. If cable cannot reach, the upper body of the 12ft Skelly with Servo needs to be lifted while in its laying position. This should enable the cable to reach.

7.1

NOTE: Make sure the (R) Head is fully seated before tightening. After connecting the wires, hide the excess inside of the available cavity at the top of the (M) Rib Cage with Servo Head Bracket.

7.2

NOTE: Loosen all of the screws on the Servo Head Bracket using the hex wrench. Fold the housing part of the bracket over the top and rotate the screws back into position using the hex wrench so that screws are snug in place. Do not overtighten.

7.2

9.1

NOTE: If your application requires additional stability, add weights on top of the base (for example sand bags – not included). You can also add guy wires (not included) for added stability.

9.2

NOTE: When plugging the adapter into the 12ft Skelly with Servo, ensure that the cap on the adapter cable is rotated clockwise until firmly in place as shown.

8.1

CAUTION: The Tether Cable (U) must be secured before standing up the 12ft Skelly with Servo. It is strongly advised that 3 adults participate in the assembly, standing the skeleton up, setting the skeleton down, and disassembly. The item must be laid down for disassembly.

8.2

NOTE: The arms can be raised or lowered to your preference. Apply firm steady pressure on the upper arm. Do not apply pressure at the hand or forearm to adjust arm height, this may damage the parts. Loud 'clacking' is normal as the arm moves. If you're unable to move the arm, please contact customer service for further instructions. Please pose arms before standing up, otherwise a ladder will be needed.

IR SENSOR
Be sure nothing is blocking the sensor.

If you would like to add additional lighting fun to your skeleton, check out the 12 Foot Skeleton Lighting Kit (SKU 1009043296) at The Home Depot (sold separately).

NOTE: The 12ft Skelly with Servo has 3 different function settings (ON, SENSOR/TIMER, and OFF) and 8 different Eye Options (MODES) to choose from - see images on box.


Settings and Eye options can be controlled at the Control Panel or by using the Remote Control.

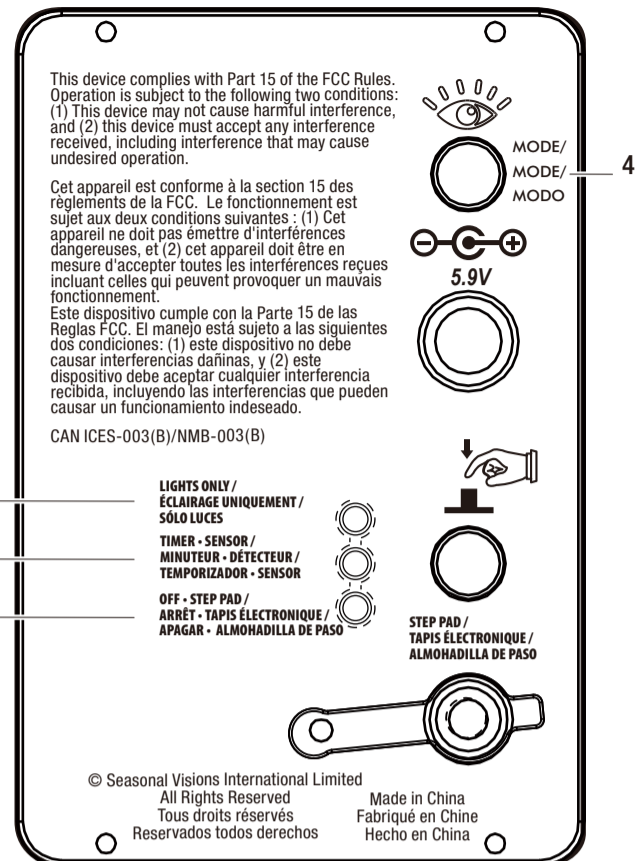
Timer/Sensor setting is only available on the Skeleton Control Panel, located on the underside of the Pelvis (K).

OPERATION INSTRUCTIONS - CONTROL BOX:

Plug the power adapter into a standard power outlet. Locate the 2 push buttons on the control panel underneath the Pelvis (K).

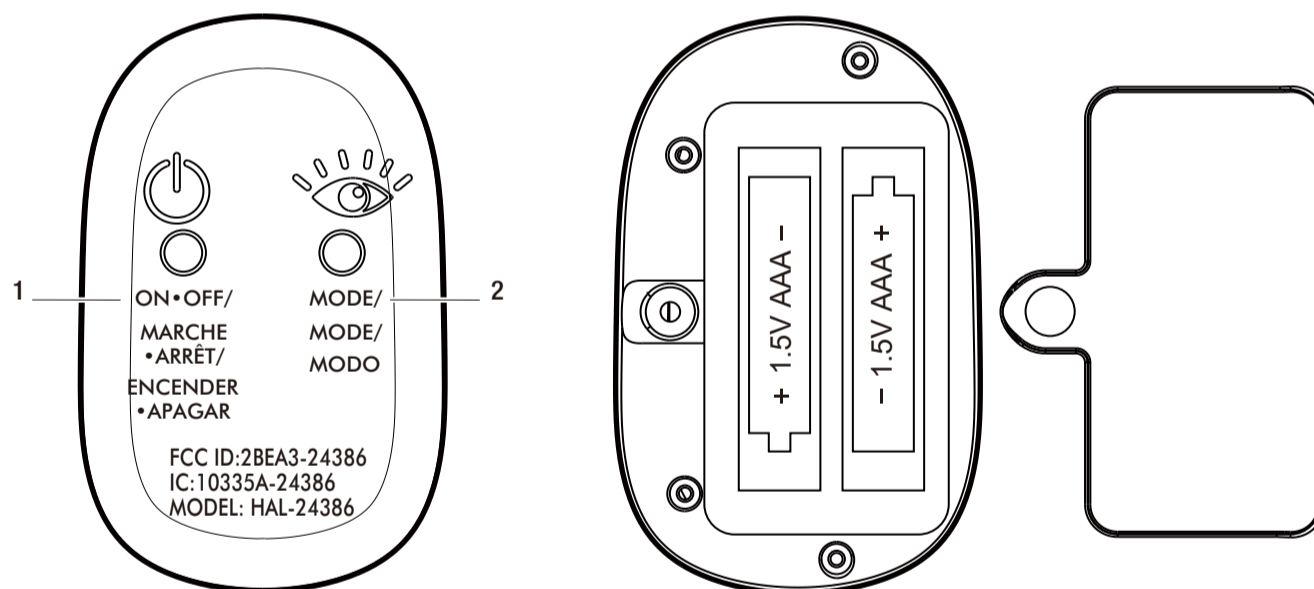
Middle Button is for ON/OFF and Sensor/Timer. Button at corner of panel is to select from 8 Eye options/modes.


Button	Function Description
1 LIGHTS ONLY / ÉCLAIRAGE UNIQUEMENT / SÓLO LUCES	Press the button once to activate "LIGHTS ONLY" mode. In this mode, only the lights of the item will stay on indefinitely until the mode setting is changed. There is no animation in this mode.
2 TIMER • SENSOR / MINUTEUR • DÉTECTEUR / TEMPORIZADOR • SENSOR	Press the button twice to activate "TIMER - SENSOR" mode. In this mode, the LCD eyes will be on for a period of 6 hours and then the eyes will deactivate for 18 hours. During the 6 hour period, the Infrared (IR) sensor can be triggered. Triggering the Infrared (IR) sensor activates the animation of the item for an 18 second activity cycle. The sensor cannot be triggered during the 18-hour inactive period. The sensor has a range of 13 ft/4 meters 80 degrees left to right as well as above and below.
3 OFF • STEP PAD / ARRÊT • TAPIS ÉLECTRONIQUE / APAGAR • ALMOHADILLA DE PASO	Press the button three times to deactivate your item. In "OFF - STEP PAD" mode, the item remains deactivated unless the step pad is pressed. If the step pad is pressed, the LCD eyes and animation will activate for an 18 second activity cycle.
4  MODE/ MODE/ MODO	Corner button toggles through 8 LCD eye options.



NOTE: The 12ft Skelly with Servo is compatible with external timers and preserves its setting when the power is turned OFF/ON.

This Remote Control allows one to change the settings of the 12ft Skelly with Servo from up to 20 ft away. The Remote Control has an indicator light that lets you know if its working.



Button	Function Description
1 ON • OFF / MARCHE • ARRÊT / ENCENDER • APAGAR	This button turns the Skeleton on and off.
2  MODE/ MODE/ MODO	This button toggles through the 8 different LCD eye displays for the 12ft Skelly with Servo.

NOTE: Timer/Sensor setting can only be chosen from the Skeleton Control Panel, not with Remote Control.

NOTE: Requires 2 x 1.5V AAA batteries (Included)

* You will need a small Phillips head screwdriver (Not included).

Locate the battery compartment on the product. Remove the battery compartment cover by using a small Phillips head screwdriver to unscrew the screw. After removing or installing the batteries, place the battery compartment cover into position, and secure the battery cover. If Skeleton is being stored while not in use, please remove battery in Remote Control.

CARE AND STORAGE INSTRUCTIONS

When not in use, store this product in its original packing. Keep away from heat and moisture.

NOTE: When not in use, store this product in its original packing. Keep away from heat and moisture. Remove batteries from Remote Control.

BATTERY WARNING:

Do not mix alkaline, standard (carbon-zinc), or rechargeable (nickel cadmium) batteries. Do not mix old and new batteries. Rechargeable batteries to be removed from the product before being charged. Only batteries of the same or equivalent type as recommended are to be used. Rechargeable batteries are only to be charged under adult supervision. Non-rechargeable batteries are not to be recharged. Batteries are to be inserted with the correct polarity. Remove batteries if exhausted or if product is to be left unused for a long time. The supply terminals are not to be short-circuited. Dispose of batteries safely. **DO NOT DISPOSE OF BATTERIES IN FIRE, BATTERIES MAY EXPLODE OR LEAK**

WARNING

This item is not a toy and should be used for decoration only. This item contains small parts that can be a choking hazard. Keep all plastic and wire parts away from children.

1. Please use the adapter supplied by manufacturer.
 2. Please assemble item according to instructions. Connect all wires according to matching color.
 3. Children should be supervised by adults. Item should not be grabbed, as it becomes a tipping hazard. Keep flammables away from the adapter, as it heats up during operation.
- Please view all instructions carefully before assembling. Save this instruction sheet for future reference.

- Lay product down before a storm or strong winds.
- Don't climb or pull on product.
- Do not add to or modify unless accessory is designed for product
- Assemble and place the product on level surfaces only.
- Don't push or tilt product.

WARNING: Changes or modifications to this unit not expressly approved by the party responsible for compliance could void the user's authority to operate the equipment.

NOTE: This equipment has been tested and found to comply with the limits for a Class B digital device, pursuant to Part 15 of the FCC Rules. These limits are designed to provide reasonable protection against harmful interference in a residential installation. This equipment generates, uses and can radiate radio frequency energy and, if not installed and used in accordance with the instructions, may cause harmful interference to radio communications.

However, there is no guarantee that interference will not occur in a particular installation. If this equipment does cause harmful interference to radio or television reception, which can be determined by turning the equipment off and on, the user is encouraged to try to correct the interference by one or more of the following measures:

- Reorient or relocate the receiving antenna.
- Increase the separation between the equipment and receiver.
- Connect the equipment into an outlet on a circuit different from that to which the receiver is connected.
- Consult the dealer or an experienced radio/TV technician for help.

This device complies with Part 15 of the FCC Rules. Operation is subject to the following two conditions:

- (1) this device may not cause harmful interference, and
- (2) this device must accept any interference received, including interference that may cause undesired operation.

This device contains licence-exempt transmitter(s)/receiver(s) that comply with Innovation, Science and Economic Development Canada's licence-exempt RSS(s). Operation is subject to the following two conditions:

1. This device may not cause interference.
2. This device must accept any interference, including interference that may cause undesired operation of the device.



Questions, problems, missing parts? Before returning to the store, please have a copy of your receipt ready and email the SVI customer experience team (customerservice@svius.com) within 90 days of the date of purchase or call Home Accents Holiday Customer Service 8 a.m. - 7 p.m., EST, Monday - Friday, 9 a.m. - 6 p.m., EST, Saturday

1-855-HD-HOLIDAY (1-855-434-6543)
HOMEDEPOT.COM