



MAKE A DIFFERENCE

Side Steps

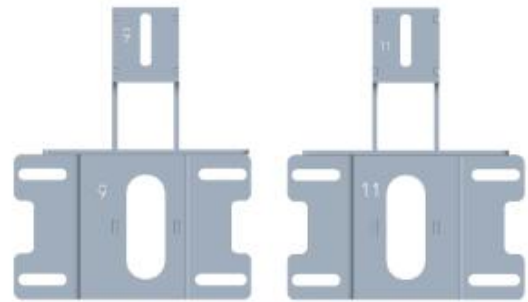
BXG.3060-S

(1) Contents:



x2

Main Body



Mounting Brackets

Qty	Part Name	Size(mm)	Picture
2	Hex Bolts	M8*20	
4	Button Head Socket Cap Bolts Screws	M6*20	
12	Button Head Socket Cap Bolts Screws	M8*20	
4	Split Lock Washer	D6	
14	Split Lock Washer	D8	
4	Flat Washer	M6*16*1.5	
14	Flat Washer	M8*20*2	
4	Flange Hex Lock Nuts	M6	
12	Flange Hex Lock Nuts	M8	
2	U Nut Fastener	M8	

(2) Tools required:

- a. Drive Socket Ratchet Wrench;
- b. 12mm Deep Socket;
- c. 3mm & 4mm Hex Bit Socket

(3) Installation time:

About 40 minutes, 1-2 people may be needed. Installation time may differ according to your mechanical skill level.

(PLEASE VERIFY ALL PARTS ARE PRESENT AND READ INSTRUCTIONS CAREFULLY BEFORE STARTING INSTALLATION!)

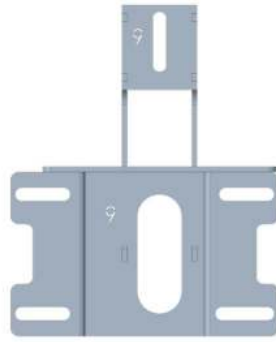
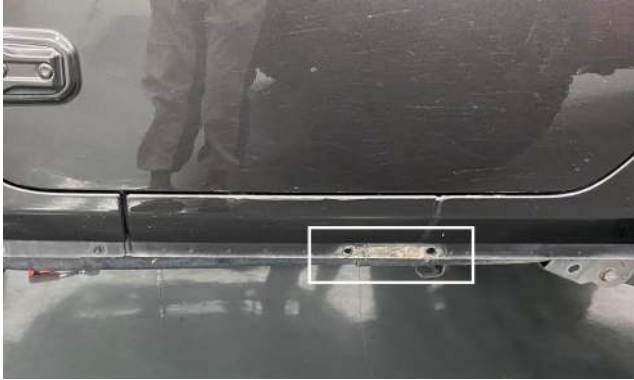
To view the electronic version (BXG.3060-S), please scan the QR code.



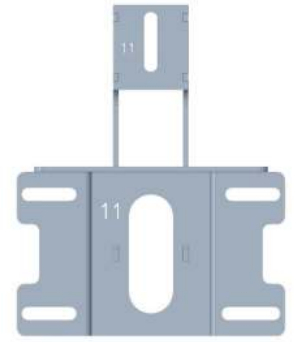
(4) Installation instruction:

Driver Side Installation

Step 1: Ready to install our side step. Distinguish the Mounting Brackets (According to the number). Note: Mounting bracket "9" is the driver side, mounting bracket "11" is the passenger side.

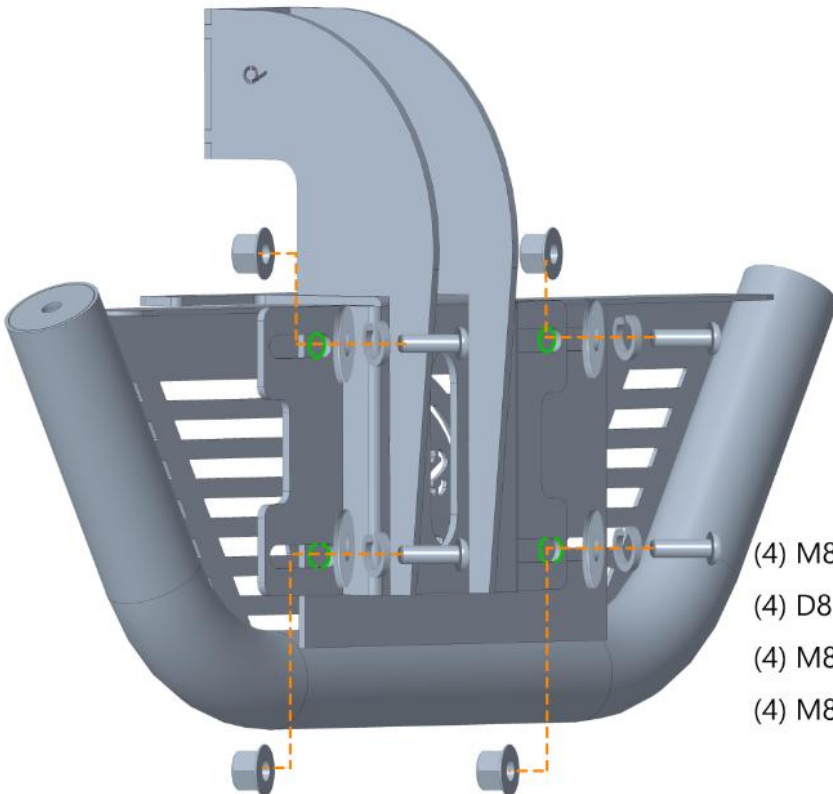


Driver Side



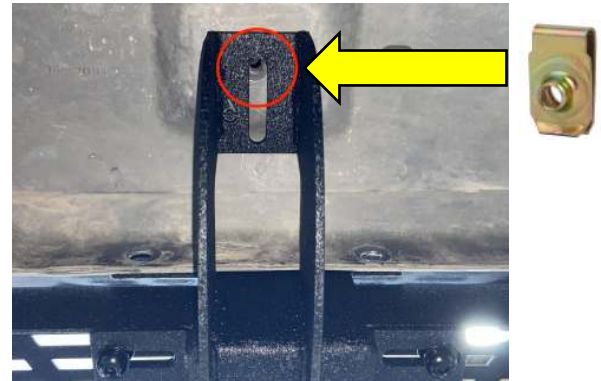
Passenger Side

Step 2: Assemble the mounting bracket with the (M8*20) Button Head Socket Cap Bolts Screws groups. Don't tighten up those bolts.

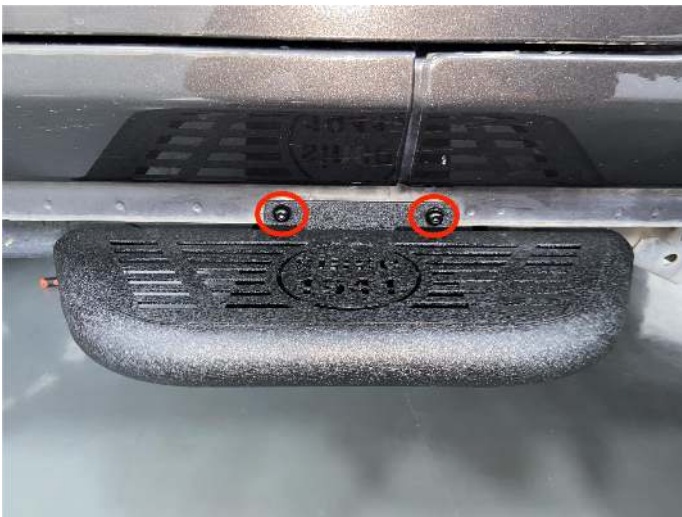


- (4) M8*20 Button Head Socket Cap Bolts Screws
- (4) D8 Split Lock Washer
- (4) M8*20*2 Flat Washer
- (4) M8 Flange Hex Lock Nuts

Step 3: Lift up the side step into the position. Make sure that mounting locations are correct. (If the inside hole in your vehicle are not threaded, you can install by using U-nut fastener.)

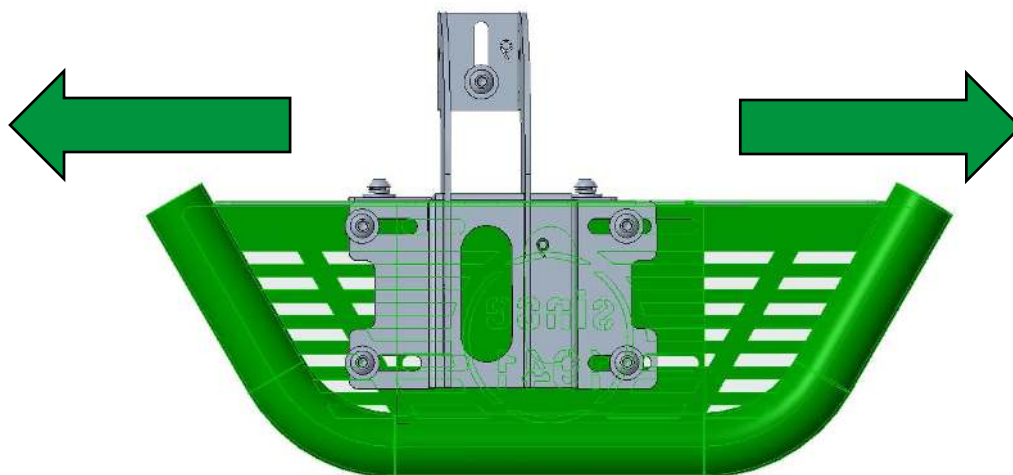


Step 4: Install the (M8*20) Button Head Socket Cap Bolts Screws groups. Don't tighten up those bolts. (If your vehicle has an M6 screw hole here, use M6 screws groups.) Then, use the (M8*20) Hex Bolts, (D8) Split Lock Washer, (M8*20*2) Flat Washer in inside holes. Adjust the side step position and tighten up all bolts.



Step 5: Repeat the same installation method in the passenger side.

Step 6: Adjust the main body left and right to the comfortable position.



Step 7:

The installation is complete. We hope you enjoy a wonderful off-road life with this quality Hooke Road product!



Attention

1.The product parts in this instruction may differ slightly from the actual product contents but generally does not affect the installation of the product.

2.Please feel free to contact your distributor if you have any kind of question about your purchase.

Google Hooke Road to find your parts.

Feel Free To Share Your Vehicle [@HookeRoad4x4](#)
With The Hashtag #hookeroad If You'd Like

