



iMac G4 17 800 MHz EMC 1936 PRAM Battery Replacement

Replacing old PRAM battery in iMac G4 17 800 MHz EMC 1936.

Written By: Justin



INTRODUCTION

Removing an old or broken PRAM battery.

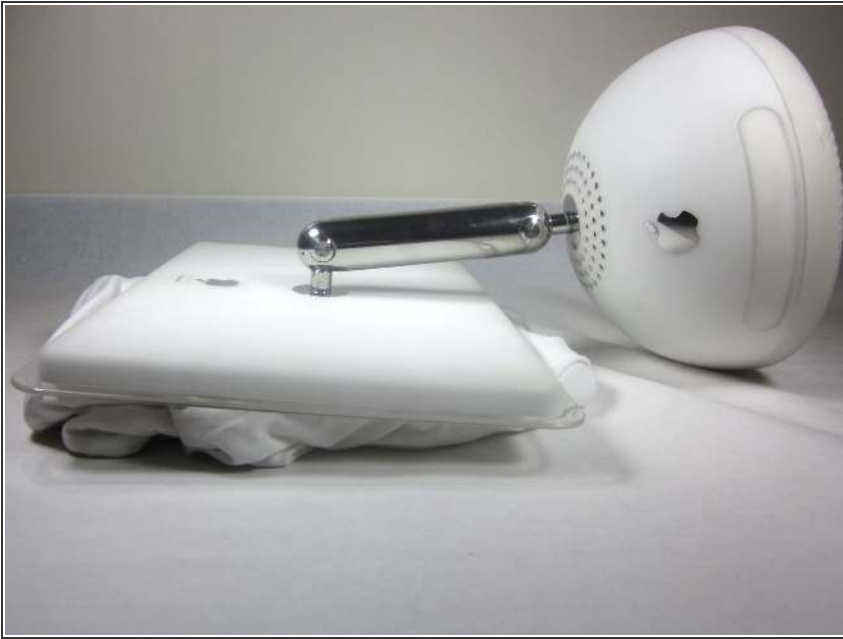
TOOLS:

- [Phillips #0 Screwdriver](#) (1)
- [T15 Torx Screwdriver](#) (1)
- [iFixit Opening Tools](#) (1)

PARTS:

- [1/2 AA Lithium 3.6V battery](#) (1)

Step 1 — Bottom Plate



- Unplug all the cables from the computer, including the power cable. Lay the computer face-down, supporting the neck and base with a soft cloth under the screen.

Step 2



- Loosen the four Phillips #0 screws.

Step 3



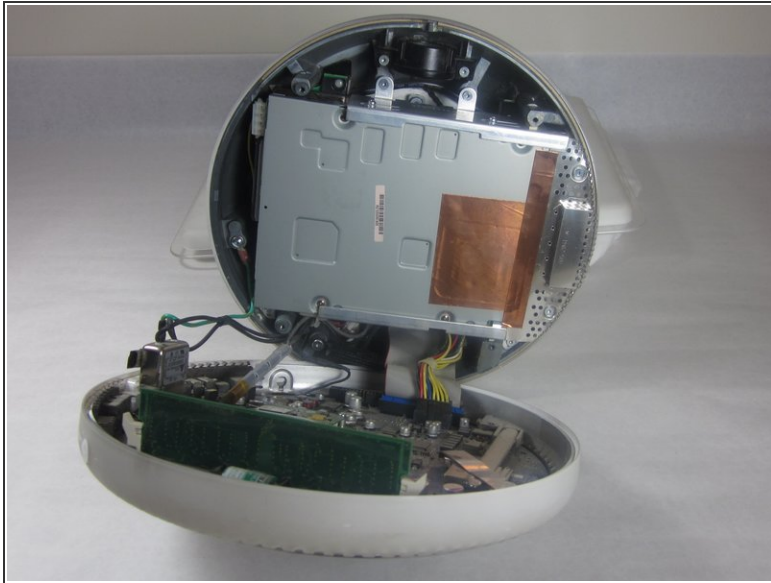
- Carefully remove the base access panel.

Step 4 — Bottom Plate Housing



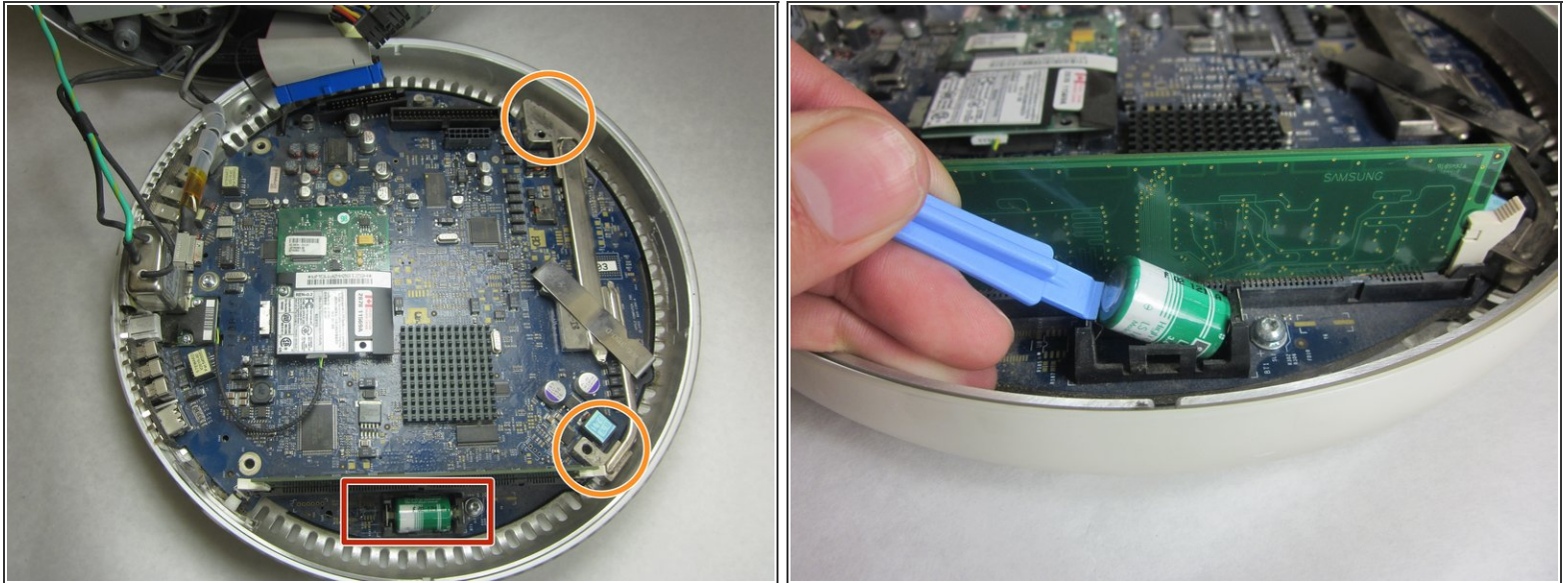
- Remove the four 25mm T-15 screws.

Step 5



- Open the housing plate.
- ⚠ Be gentle with the wires still connected to the logic board so as not to ruin the cables.
- A fixed plug connector between the logic board and upper unit will cause some resistance. Pull gently but firmly.

Step 6 — PRAM Battery



- Gently remove the battery from its holder using the plastic opening tool.
- Insert new battery.

⚠ Clean and re-apply thermal paste to the heat sink areas circled in orange. See Step 15 in [iMac G4 17" Model M9168LLA Hard Drive Replacement](#) for better photos and description.

To reassemble your device, follow these instructions in reverse order.