



Disassembling General Electric Telephone 2-9710A Base Shell

This guide gives step-by-step instructions for...

Written By: Alles Rebel



INTRODUCTION

This guide gives step-by-step instructions for removing the outer shell of the base to assess the logic board within the phone. After completing this guide, you will have access to the logic board and all other interior parts of the telephone.

TOOLS:

Phillips #1 Screwdriver (1)

iFixit Opening Tool (1)

Step 1 — Phone Cord



 **Unplug the device before proceeding.**

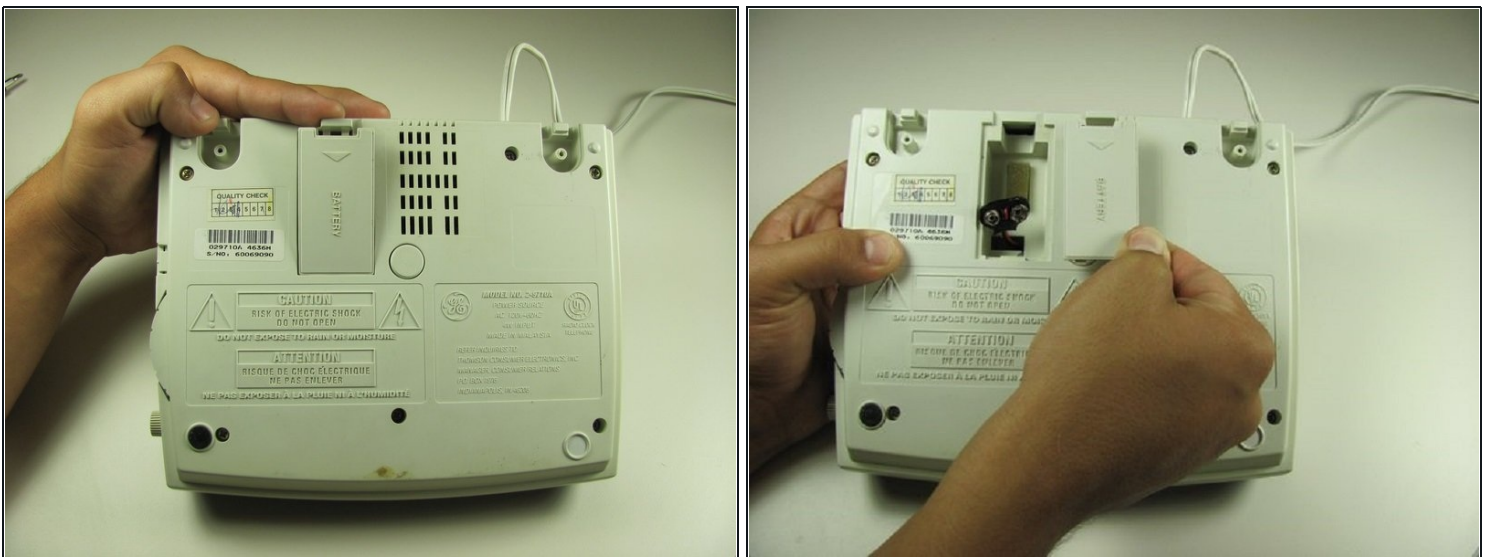
- Using a plastic opening tool, remove the phone cord from the phone jack at the base of the headset.
- ⓘ To release the cable, gently press down on the top plastic tab of the connector.

Step 2



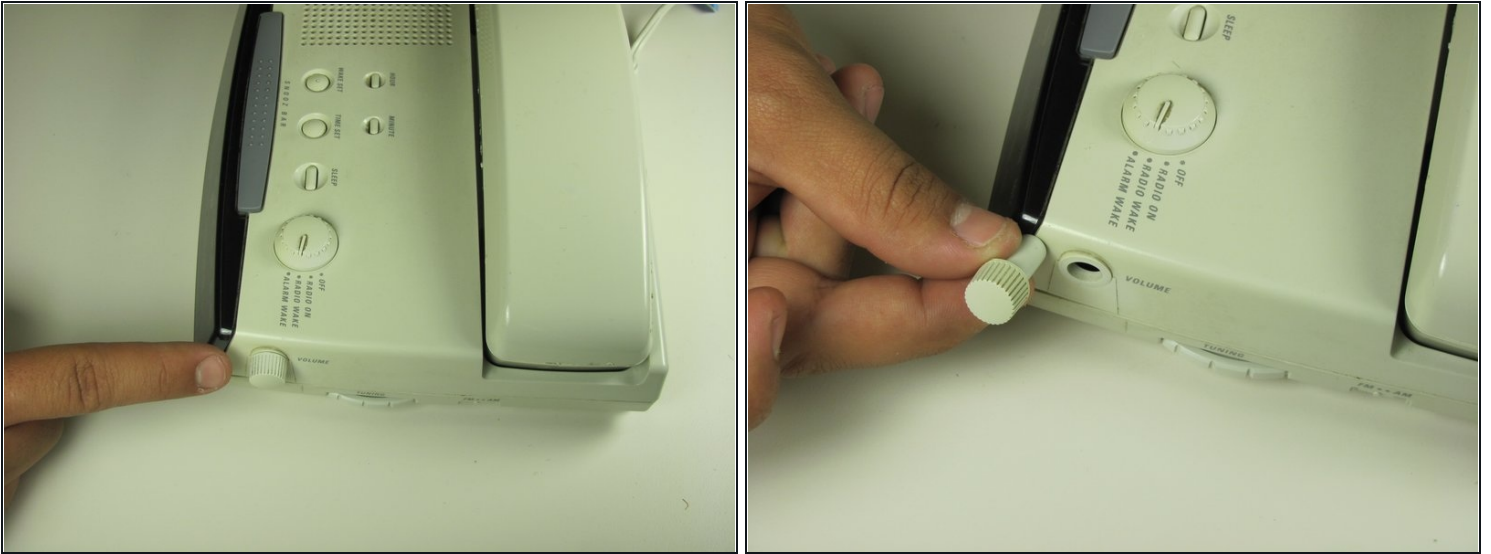
- Remove the 7.5 mm screw.
- Remove the screw cap.
- Pull up the phone cord to remove it from the base.

Step 3 — 9V Base Battery



- Remove the battery compartment door (located on the bottom of the radio) by applying thumb pressure to the area indicated on the battery door.
- Slide the door off of the battery compartment.
- Remove the battery from the phone.

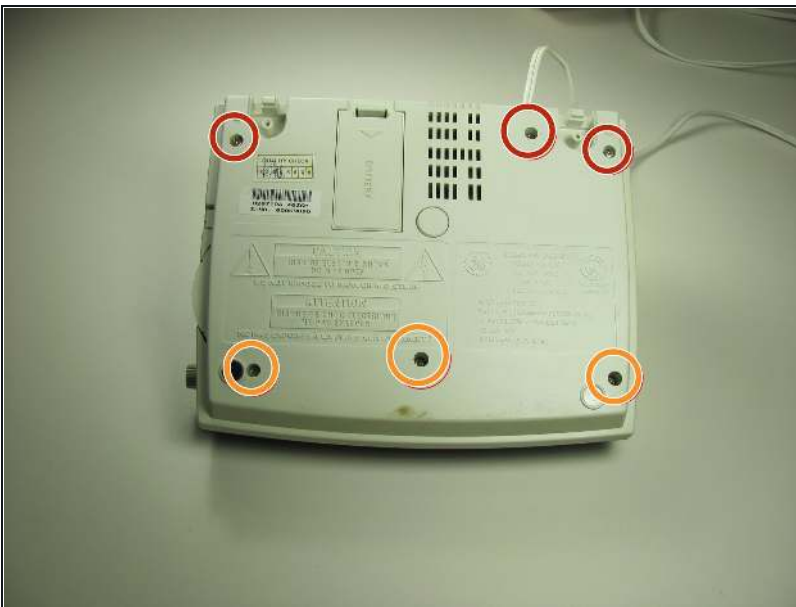
Step 4 — Remove Volume Dial



⚠️ Ensure the phone is unplugged from the phone jack and the electrical source.

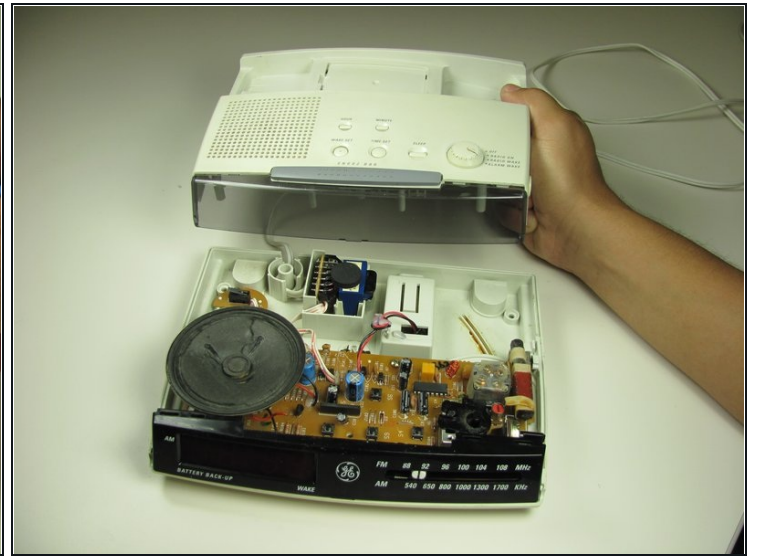
- Locate the volume dial on the right side of the telephone.
- Remove the volume dial by gently grasping it and pulling it away from the base.

Step 5 — Remove Screws on the Back



- Remove the three 12 mm screws with a Phillips #1 screwdriver.
- Remove the three 18 mm screws with a Phillips #1 screwdriver.

Step 6 — Pry the Back Off



- Pry off the base shell using a plastic opener tool.
 - Set the shell aside.
- ⓘ You now have access to the internal components of the General Electric Telephone 2-9710A.

Reassemble your device by following these instructions in reverse order.