

# ikan

## PT-PEDAL Product Manual



### Product description

Control your teleprompter and set your own pace with the Foot Control Pedal from Ikan. Designed to work with the Ikan Beam Splitter Glass Teleprompters, this wired foot controller connects to your computer via a USB cable to control different aspects of your prompter sessions such as scroll speed, start, and stop. The Teleprompter Foot Pedal includes dampeners that dramatically reduce the sound of the pedals when they are pressed down.

The foot pedal's curved design facilitates right- or left-foot configurations. It connects to your computer's Ikan's Prompter Pro software and three spaced pedals offer simple prompter controls. Use the center pedal to start or stop your session, use the left pedal to slow down scroll speed, and use the right pedal to increase scroll speed. Use on a flat surface for better control.

Control start, stop, and scroll speed with three pedals

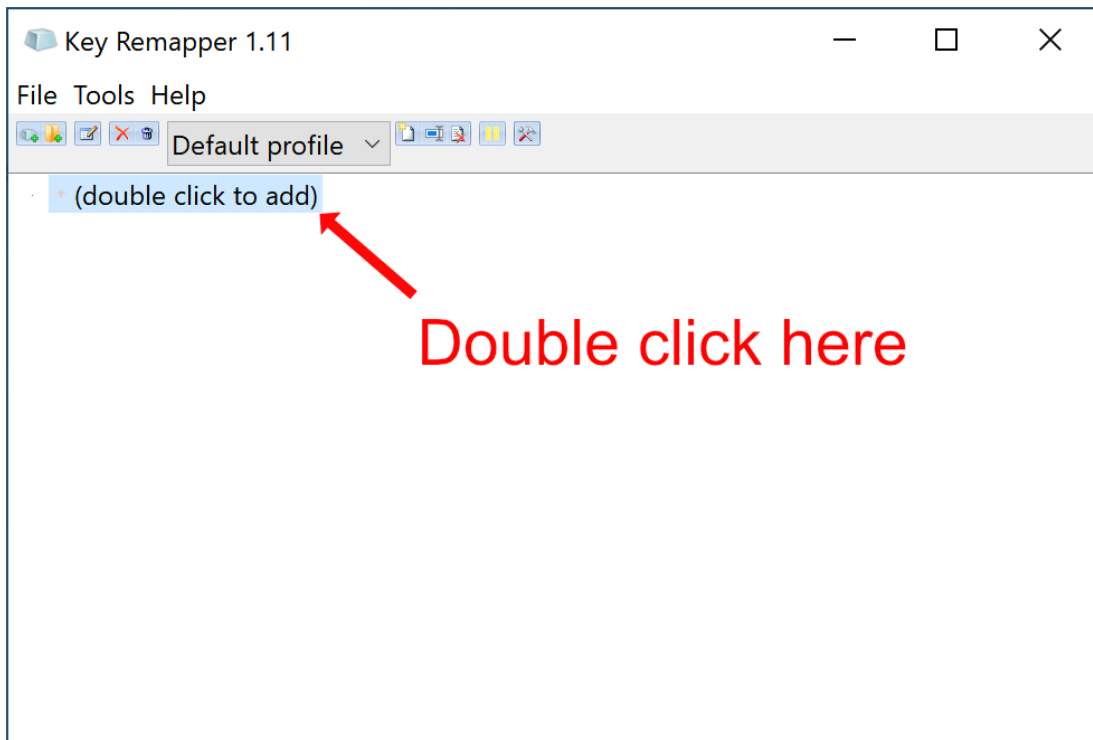
Curved design facilitates right- or left-foot configurations

Compatible with Ikan's Prompter Pro software for prompter session control

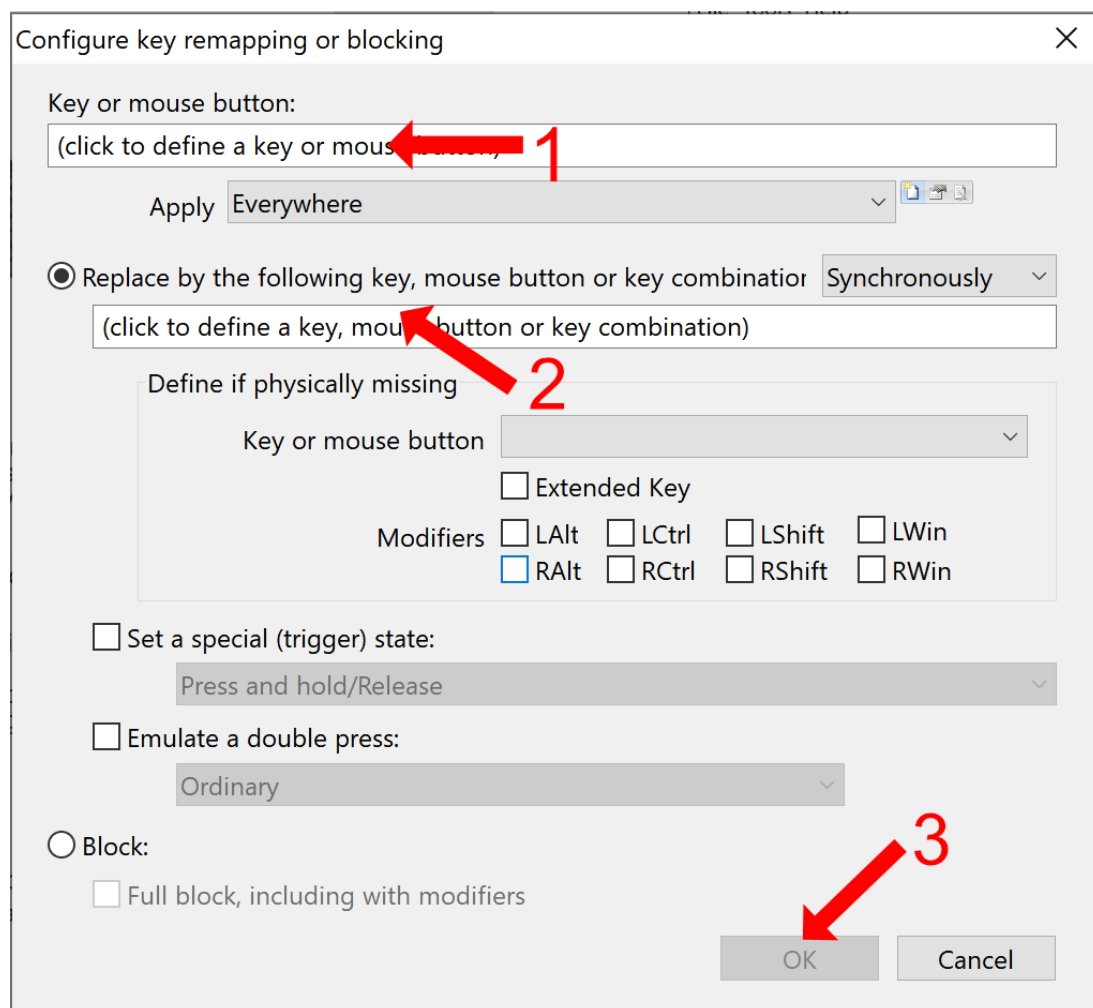
Connects to any computer running Microsoft Windows 10, 8, or 7 via a 5' standard USB cable

### 3. Use of software:

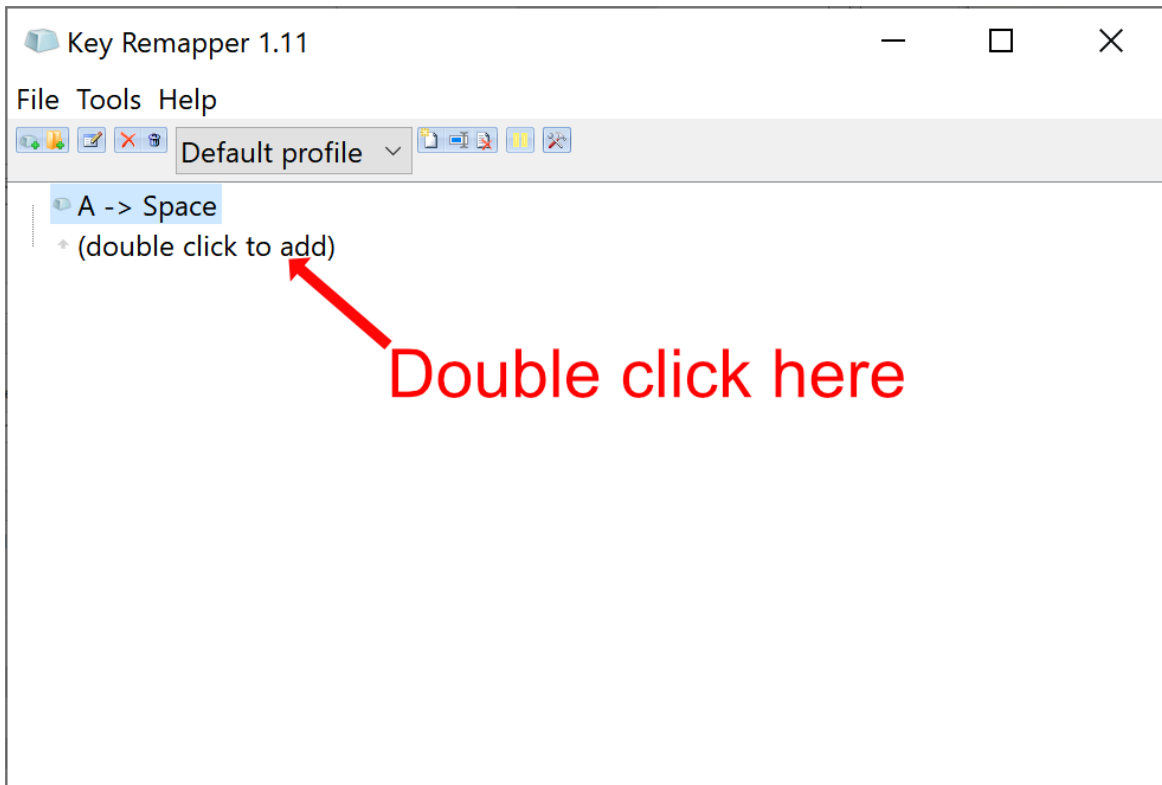
Install the Key Remapper software and insert the foot switch into the computer's USB port and run the Key Remapper software. The software window is as follows:



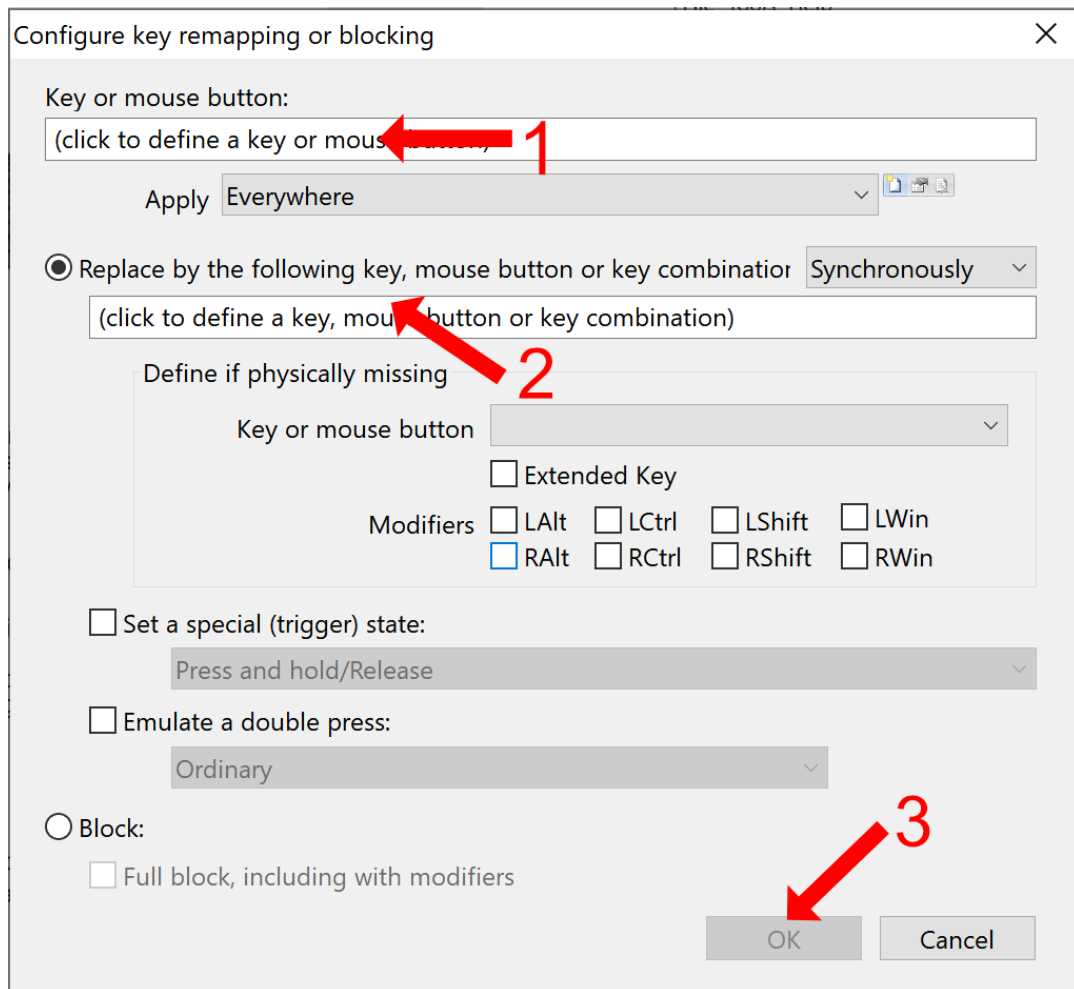
Double click the text "(double click to add)"



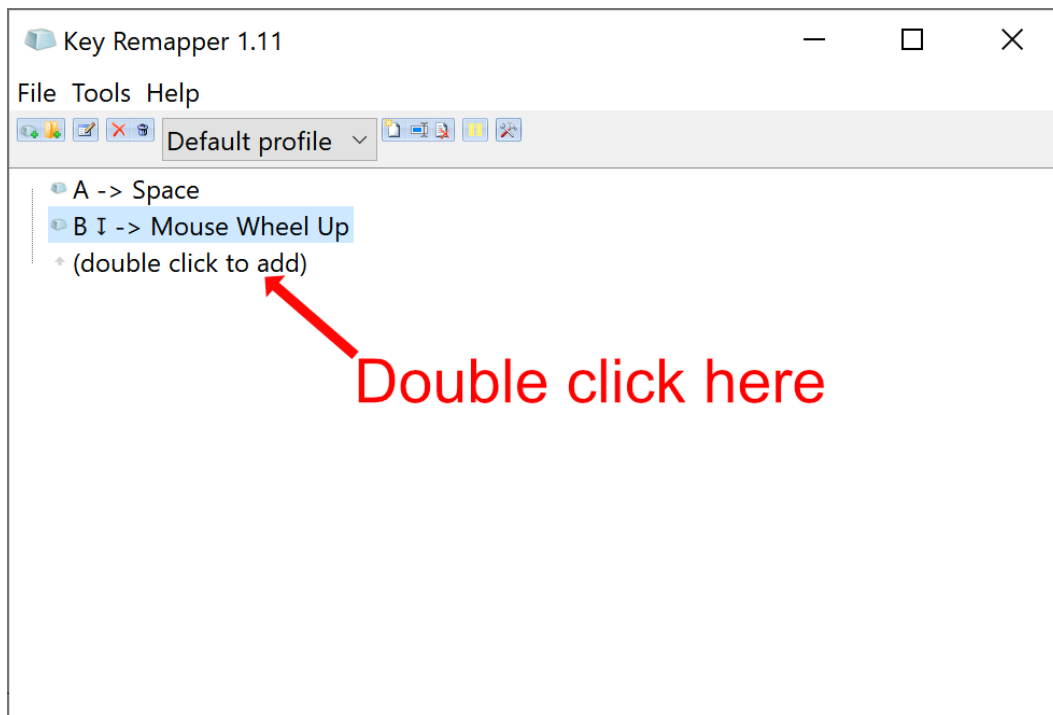
1. Click the "Key of mouse button" section, then tap the left pedal.
2. Click the "Replace by following key" section, then press the space bar on your keyboard.
3. Click OK



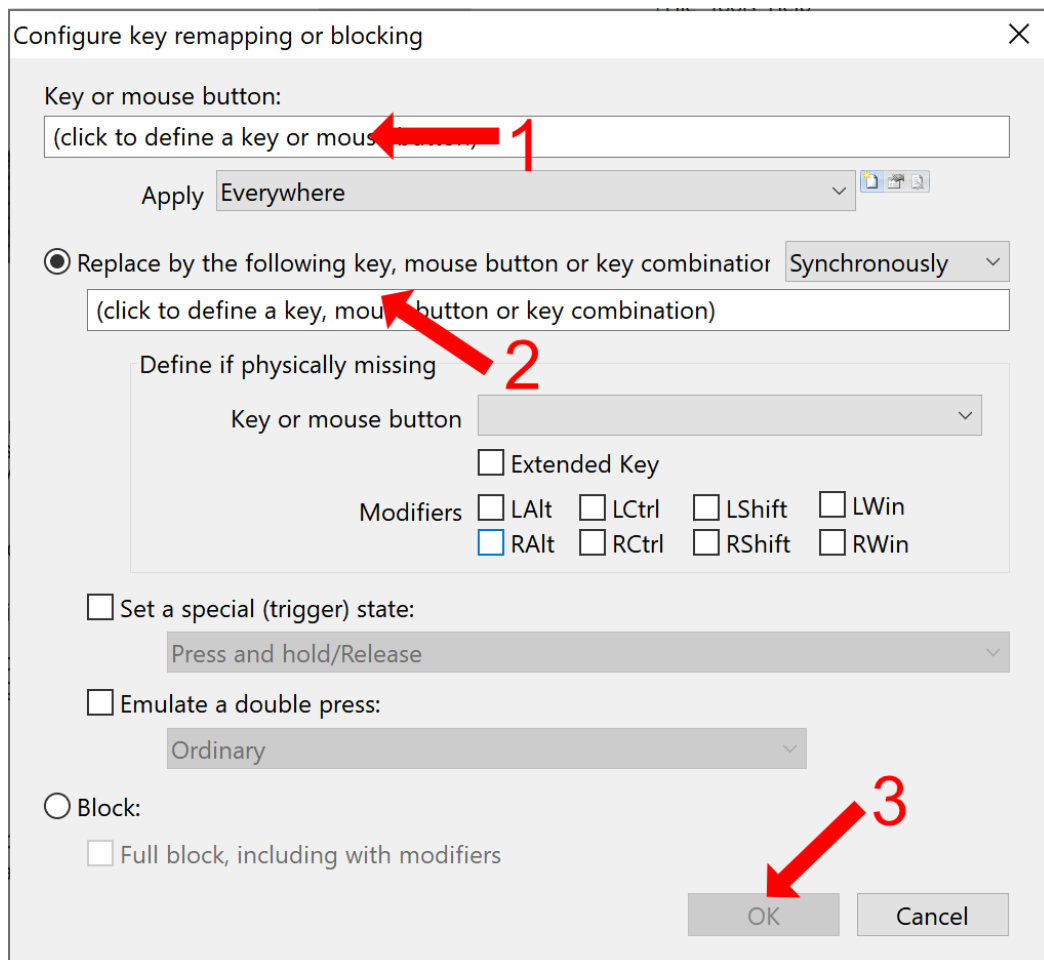
Double click the text "(double click to add)"



1. Click the "Key of mouse button" section, then tap the middle pedal.
2. Click the "Replace by following key" section, then scroll up on your mouse.
3. Click OK



Double click the text "(double click to add)"



1. Click the "Key of mouse button" section, then tap the right pedal.
2. Click the "Replace by following key" section, then scroll down on your mouse.
3. Click OK

Once you have finished mapping the keys and mouse movements, you can open Prompter Pro and use the Foot Pedal to control the scroll of the script. By pushing the scroll pedals multiple times, you can control the speed of the script. The Left pedal will stop the script.