

QUICK SETUP GUIDE



Wall Charger

- 140W
- NS-PW3X4AC2W22B
 - NS-PW3X4AC2W22B-C

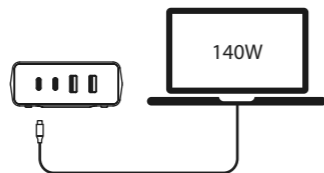


USING YOUR CHARGER

You can use your charger in four different ways. USB-C ports are suitable for laptops and tablets. USB ports are suitable for smartphones, smartwatches, and earbuds.

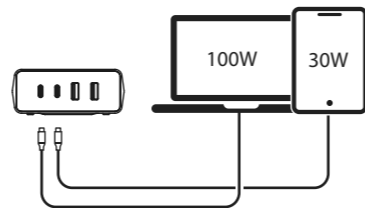
One port

Each USB-C port provides up to 140W of power when used alone.



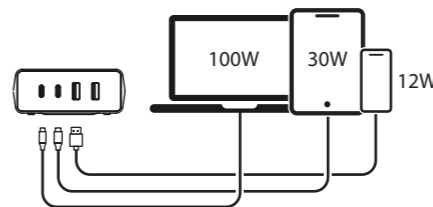
Two ports

2 USB-C ports provide 100W+30W of power when used together.



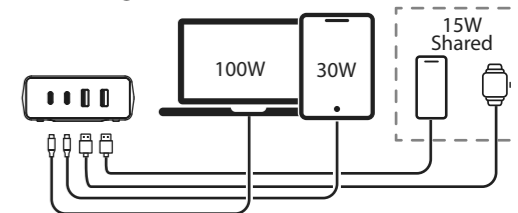
Three ports

2 USB-C ports provide 100W+30W of power when used together. Each USB port provides up to 12W of power when used alone.



Four ports

2 USB-C ports provide 100W+30W of power when used together. 2 USB ports provide a shared 15W when used together.

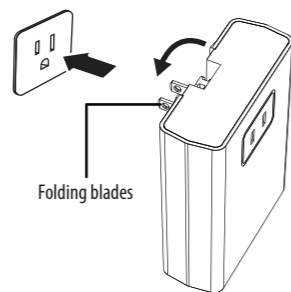


POWERING YOUR CHARGER

You can power your charger in three different ways.

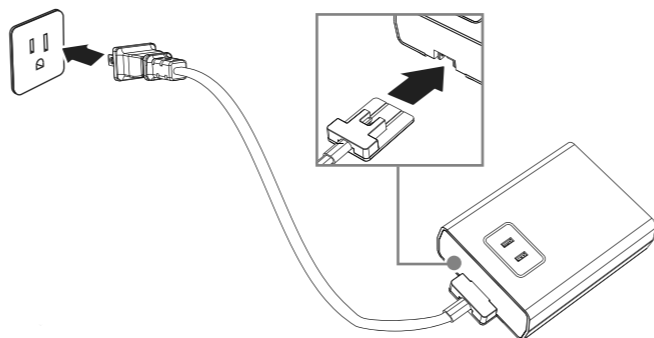
Using the folding blades

Flip out the folding blades, then plug the charger into a standard wall outlet.



Using the power cord

Slide the flat end of the power cord over the folded blades on your charger. Plug the other end into a standard wall outlet.

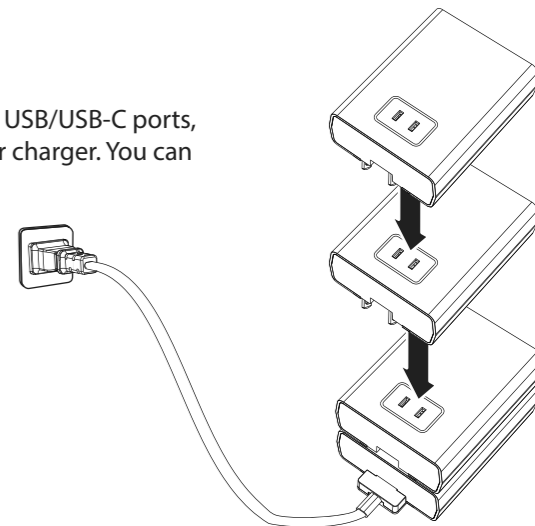


Stacking with other chargers


To connect your chargers together for more power output and USB/USB-C ports, extend your charger's foldable blades, then plug it into another charger. You can stack up to four chargers.

Caution: Do not stack more than 4 chargers.

# of Chargers	Total Power Output	# of Ports
1 charger	140W	4
2 chargers	280W	8
3 chargers	420W	12
4 chargers	560W	16



SPECIFICATIONS

	FOR MACBOOK PRO 16"	
MODEL	NS-PW3X4AC2W22B / NS-PW3X4AC2W22B-C	
POWER	140W (2C2A Multi Ports, with power cord)	
WORKS BEST WITH	ONE DEVICE: MacBook Pro (16-inch, 2021)	OR FOR MULTIPLE DEVICES SIMULTANEOUSLY: MacBook Pro + iPad Pro + iPhone + Apple Watch MacBook Pro + iPhone + Apple Watch + AirPods MacBook Pro + iPad Pro + Apple Watch + AirPods Laptop + Tablet + Watch + Headphone Laptop + Smartphone + Watch + Headphone
COMPATIBLE DEVICES		
INPUT	100-240V~ 50/60Hz	
OUTPUT	AC Output: 7A Max. USB Ports Output: Total 145W Max Use One USB Port: USB-C Output: 140W 5V==3A, 9V==3A, 15V==3A, 20V==5A, 28V==5A USB Output: 12W 5V==2.4A	Use Multiple USB Ports: USB-C1 Output: 100W 5V==3A, 9V==3A, 15V==3A, 20V==5A (PPS) 5-21V/5A, 100W Max USB-C2 Output: 30W 5V==3A, 9V==3A, 15V==2A, 20V==1.5A USB-A1 + USB-A2 Output: 15W 5V==3A total (2.4A each)
DIMENSIONS (H x W x D)	4.3 x 3.3 x 1.4 in. (110 x 85 x 34.6 mm)	
WEIGHT (CHARGER ONLY, approx.)	12.7 oz. (360 g)	
PACKAGE CONTENTS	Wall Charger, 6 ft. 10A power cord, <i>Quick Setup Guide</i>	

TROUBLESHOOTING

My device isn't charging.

- Make sure that the charger is connected securely to the wall plug.
- Make sure that your device is securely connected to the charger.

My device is charging slowly.

- Make sure that the power requirements of your device match the power delivery of the charger.
- Stop using your device while it is charging.
- Close apps that run in the background on your device.
- Devices may start charging slower as they get older. This is normal.

SAFETY INFORMATION/CAUTION

READ ALL INSTRUCTIONS BEFORE USING.

- THIS PRODUCT IS NOT A VOLTAGE CONVERTER. Use this adapter only if the power outlet voltage is within the range of your device's voltage. Using this adapter with an incompatible device and power outlet may result in a risk of fire, electric shock, injury to persons, or damage to the device.
- Always disconnect the adapter and the device from the power outlet when not in use.
- Do not expose the adapter to high temperatures or humid environments.
- Do not place the product into a fire or submerge it in liquid.
- Do not disassemble the product.
- Avoid external shocks.
- The product will heat slightly when charging and discharging. This is normal.
- Do not operate the adapter with wet hands.

- Keep out of reach of children.
- Indoor use only
- Protection class II appliance.

LEGAL NOTICES

1.FCC Caution:

Changes or modifications not expressly approved by the party responsible for compliance could void the user's authority to operate the equipment.

FCC Statement: This equipment has been tested and found to comply with the limits for a class B digital device, pursuant to part 15 of the FCC Rules.

These limits are designed to provide reasonable protection against harmful interference in a residential installation. This equipment generates, uses, and can radiate radio frequency energy and, if not installed and used in accordance with the instructions, may cause harmful interference to radio communications. However, there is no guarantee that interference will not occur in a particular installation. If this equipment does cause harmful interference to radio or television reception, which can be determined by turning the equipment off and on, the user is encouraged to try to correct the interference by one or more of the following measures:

- Reorient or relocate the receiving antenna.
- Increase the separation between the equipment and receiver.
- Connect the equipment into an outlet on a circuit different from that to which the receiver is connected.
- Consult the dealer or an experienced radio/TV technician for help.

This device complies with part 15 of the FCC Rules.

Operation is subject to the following two conditions: (1) This device may not cause harmful interference, and (2) this device must accept any interference received, including interference that may cause undesired operation.

2. CAN ICES-003 B/NMB-003 B

ONE-YEAR LIMITED WARRANTY

Visit www.insigniaproducts.com for details.

CONTACT INSIGNIA:

For customer service, call 1-877-467-4289 (U.S. and Canada)

www.insigniaproducts.com

INSIGNIA is a trademark of Best Buy and its affiliated companies
Distributed by Best Buy Purchasing, LLC
7601 Penn Ave South, Richfield, MN 55423 U.S.A.
©2022 Best Buy. All rights reserved.