



PARTYBOX ENCORE
ESSENTIAL2

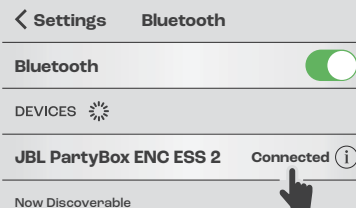


WHAT'S IN THE BOX

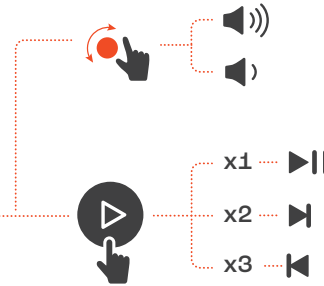


*Power cord quantity and plug type vary by regions.

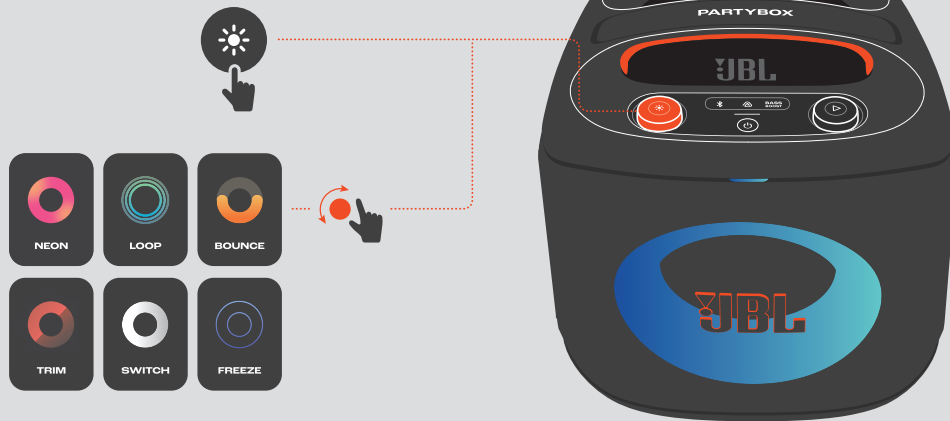
BLUETOOTH PAIRING



PLAY

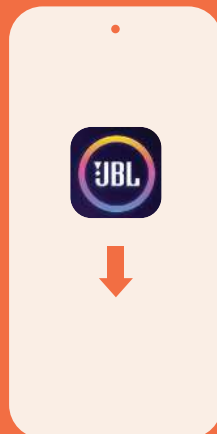


LIGHTSHOW



Apply lightshow presets and more with the JBL PARTYBOX app.

APP



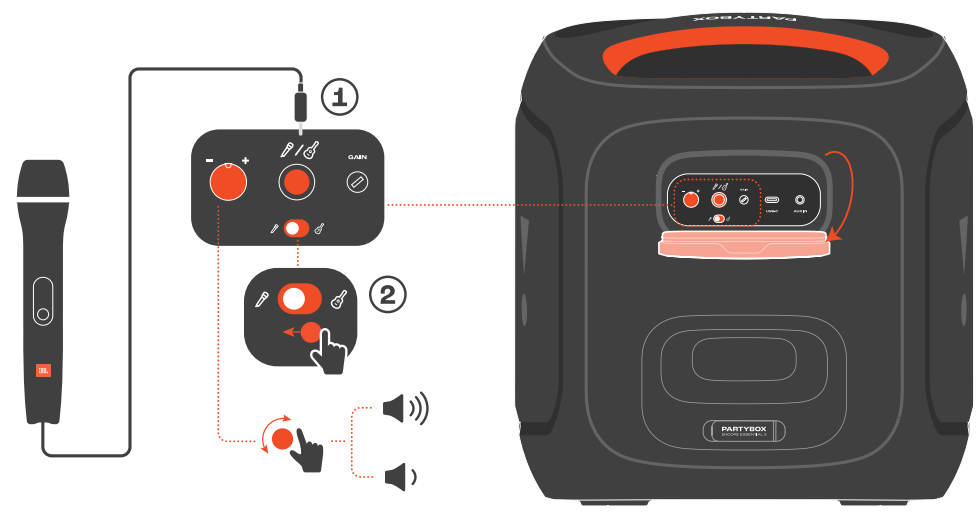
Download and install the JBL PARTYBOX app to get more from the product.



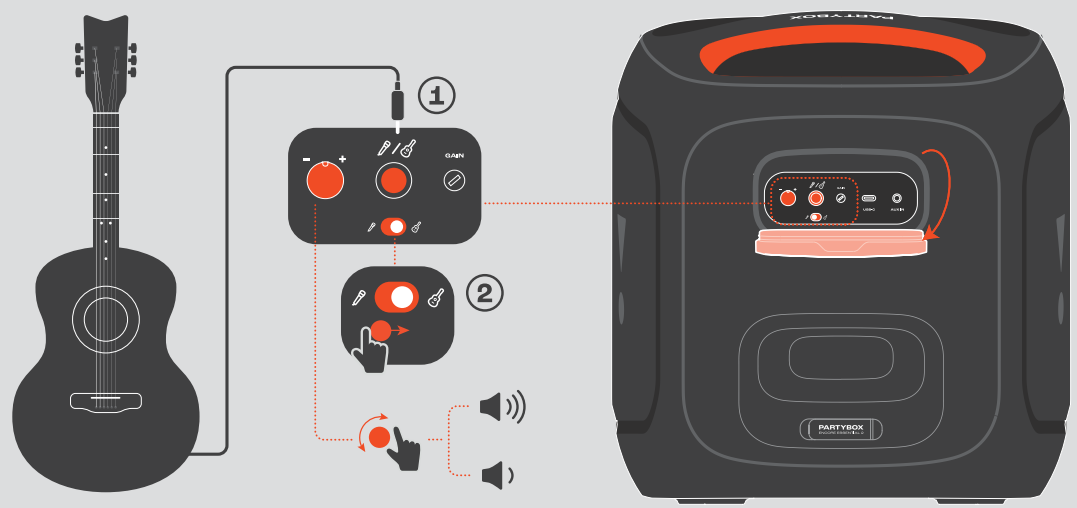
🔍 JBL PARTYBOX



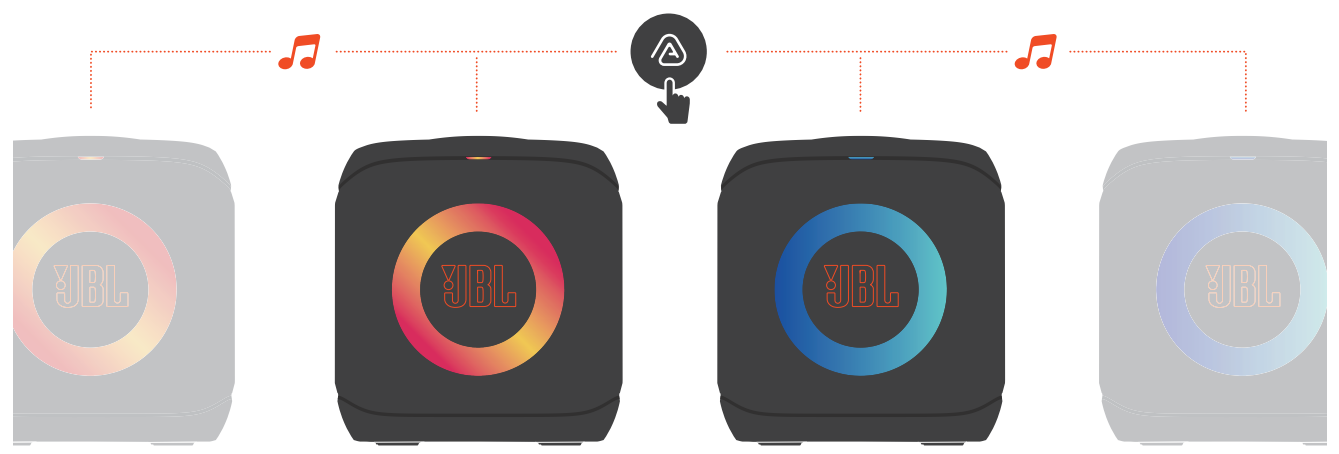
MICROPHONE



GUITAR



MULTI-SPEAKER CONNECTION

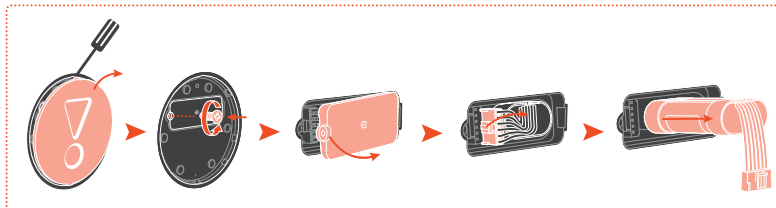


CHARGING

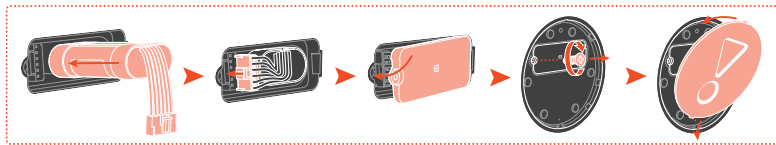


BATTERY REPLACEMENT

① Remove the Old Battery



② Insert the New Battery



Replacement batteries can be purchased from the JBL Customer Service Center.

SPLASH PROOF IPX4



Do not charge your speaker until it is completely dry and clean.

TECH SPEC

Transducers:	1 x 5.25 inch (135 mm) woofer, 2 x 0.75 inch (20 mm) Dome tweeters
Output power:	100 W RMS (IEC60268)
Power input:	100 - 240 V ~50/60 Hz
Frequency response:	40 Hz - 20 kHz (-6 dB)
Signal-to-noise ratio:	> 80 dB
Battery type:	Li-ion polymer 34 Wh (7.2 V / 4722 mAh)
Battery charge time:	< 3.5 hours (Speaker off mode)
Music play time:	up to 15 hours (varies by volume level and audio content)
USB file format (not for EMEA region):	.MP3, .WAV, .FLAC
USB charge out:	11 V / 2 A (Max) (Speaker off mode)
Cable length:	2.0 m / 6.6 ft

Bluetooth® version:	5.4
Bluetooth® profile:	A2DP V1.4, AVRCP V1.6 (SW), TMAP1.0, PBP1.0
Bluetooth® transmitter frequency range:	2.4 GHz ~ 2.4835 GHz
Bluetooth® transmitter power:	≤ 15 dBm (EIRP)
Bluetooth® transmitter modulation:	GFSK, $\pi/4$ DQPSK, 8DPSK
Product dimensions (W x H x D):	319.5 mm x 342 mm x 260.4 mm / 12.58" x 13.46" x 10.25"
Net weight:	6.2 kg / 13.67 lbs
Packaging dimensions (W x H x D):	400 mm x 365 mm x 350 mm / 15.75" x 14.37" x 13.78"
Gross weight:	8.25 kg / 18.19 lbs

* **Factory reset:** To restore the factory settings, hold  and  for more than 10 seconds.

The product complies with Commission Regulation (EU) 2023/826 ecodesign requirements for off mode, standby mode, and networked standby energy consumption of electrical and electronic household and office equipment.

1. Information on power consumption

- Off mode: N/A
- Standby mode: ≤ 0.5 W
- Networked standby mode: ≤ 2.0 W
- Networked standby mode if all wired ports are connected and all wireless ports are activated: ≤ 2.0 W

2. The period after which the power management function switches the equipment automatically into:

Off/Standby mode	When the system is in normal operation	Switched to Off/Standby mode after 20 minutes of inactivity
Networked Standby mode	When wireless network connection is activated	Switched to networked Standby mode after 20 minutes of inactivity

The maximum operation temperature is 45 °C.

No naked flame sources, such as lighted candles, should be placed on the apparatus.



This equipment is a Class II or double insulated electrical appliance.



The Bluetooth® word mark and logos are registered trademarks owned by Bluetooth SIG, Inc. and any use of such marks by HARMAN International Industries, Incorporated is under license. Other trademarks and trade names are those of their respective owners.



Este produto está homologado pela Anatel, de acordo com os procedimentos regulamentados para avaliação da conformidade de produtos para telecomunicações e atende aos requisitos técnicos aplicados.

Para maiores informações, consulte o site da Anatel – www.anatel.gov.br

Este equipamento não tem direito à proteção contra interferência prejudicial e não pode causar interferência em sistemas devidamente autorizados.

Atenção: conforme lei brasileira nº 11.291, a exposição prolongada a ruídos superiores a 85dB pode causar danos ao sistema auditivo.



FR

Cet appareil, ses accessoires et cordons se recyclent

À DÉPOSER EN MAGASIN



OU

À DÉPOSER EN DÉCHÈTERIE



Points de collecte sur www.quefairedemesdechets.fr



PARTYBOX ENCORE ESSENTIAL 2

Portable party speaker



Bring the star power to your next party.

Power up the JBL PartyBox Encore Essential 2 and let the good times roll. With this portable speaker, you'll want to play DJ at every event, with smooth JBL Pro Sound and a light show to fit the mood. Feel that extra oomph in your chest from the epic highs and deep lows, whether you're playing a new pop ballad or going with a classic slow jam. Once you've nailed the soundcheck, it's time to turn up the ambiance with a light show that grooves to your beats. From open rooftops to crowded basements, the JBL PartyBox Encore Essential 2 knows how to adapt, with its grab-and-go handle and IPX4 splash-proof design.

What's better than one JBL PartyBox Encore Essential 2? Two! Pair them up for true stereo vibes or link with other JBL Auracast™-enabled speakers for an even wilder dance party. Keep the good vibes going on a single charge with up to 15 hours of playtime. Make the vibes immaculate with the JBL PartyBox app, where you can control your playlist, add fun sound effects, and pick the perfect light show mood—all while you're doing the worm on the dance floor.

Whatever the occasion, the JBL PartyBox Encore Essential 2 knows how to bring all the feels.

Features

- ▶ JBL Pro Sound gets an AI Sound Boost
- ▶ Dynamic lightshow
- ▶ Up to 15 Hours of play time
- ▶ Multi-speaker connection by Auracast™
- ▶ Mic & Guitar Inputs
- ▶ Control your party, right from the JBL PartyBox App
- ▶ IPX4 Splash proof
- ▶ Recycled plastic, plus FSC certified paper packaging





PARTYBOX ENCORE ESSENTIAL 2

Portable party speaker



Features and Benefits

JBL Pro Sound gets an AI Sound Boost

Pop ballads, slow jams and everything in between, we've got the sound to make your playlist shine. Feel that extra oomph in your chest as the silk dome tweeters and powerful woofers bring those epic highs and deep lows. Want to turn it up even louder? Your music will still sound crystal clear as the AI Sound Boost delivers more powerful sound with less distortion.

Dynamic lightshow

Is it really a party without a lightshow? Dance the night away with glowing light patterns and strobe effects that would make any club jealous.

Up to 15 Hours of play time

Keep the good vibes going on a single charge with up to 15 hours playtime.

Multi-speaker connection by Auracast™

Bigger parties call for even bigger sound. Pair two PartyBox Encore Essential 2 for true stereo vibes via Auracast™, or connect multiple JBL Auracast™-enabled speakers wirelessly and let your music grow with your party size.

Mic & Guitar Inputs

Bring live talent into the mix. It's easy to sing and play along using the guitar and mic inputs. With karaoke EQ tuning and the built-in lightshow, everybody's gonna sound—and look—like a superstar.

Control your party, right from the JBL PartyBox App

Don't feel stuck on speaker babysitting duty. Control your music, EQ settings, and lightshow from the JBL PartyBox app, wherever the party takes you.

IPX4 Splash proof

Spills and splashes happen...don't sweat the mess. The JBL PartyBox Encore Essential 2 is IPX4 splash proof so your flow is never interrupted.

Recycled plastic, plus FSC certified paper packaging

The JBL PartyBox Encore Essential 2 incorporates post-consumer recycled plastic. It's also packaged in FSC-certified paper printed with soy ink.

Technical Specifications

- ▶ Transducers: 1 x 5.25 inch (135mm) woofer, 2 x 0.75 inch (20mm) Dome tweeters
- ▶ Output power: 100W RMS (IEC60268)
- ▶ Power input: 100 - 240V -50/60 Hz
- ▶ Frequency response: 40Hz - 20kHz (-6dB)
- ▶ Signal-to-noise ratio: > 80dB
- ▶ USB format: FAT16, FAT32
- ▶ Bluetooth® version: 5.4
- ▶ Bluetooth® profile: A2DP V1.4, AVRCP V1.6(SW), TMAP1.0, PBP1.0
- ▶ Bluetooth® transmitter frequency range: 2.402GHZ~2.4835GHZ
- ▶ Bluetooth® transmitter power: ≤ 16 dBm (EIRP)
- ▶ Bluetooth® transmitter modulation: GFSK, π/4 DQPSK, 8DPSK
- ▶ USB Supported formats (Not for EMEA region): .MP3, .WAV, .FLAC
- ▶ Aux-In: 370 mV RMS (3.5mm connector)
- ▶ Mic-In: 20 mV RMS
- ▶ Guitar-In: 100 mV RMS
- ▶ Bluetooth/USB input: -9dBFS
- ▶ Battery type: Li-ion Battery, 34Wh (7.4V/4722mah)
- ▶ Battery charge time: < 3.5 hours (Speaker off mode)
- ▶ Music play time: up to 15 hours (varies by volume level and audio content)
- ▶ Cable type: AC power cable (type varies by regions)
- ▶ Cable length: 2.0m / 6.6 ft
- ▶ USB charge out: 1.1V / 2A (Max) (Speaker off mode)
- ▶ Product dimensions (W x H x D): 319.5mm x342mm x260.4mm (12.58"x13.46"x10.25")
- ▶ Net weight: 6.2kg/13.67lbs
- ▶ Packaging dimensions (W x H x D): 400 mm x 365 mm x 350 mm / 15.75" x 14.37" x 13.78"
- ▶ Gross weight: 8.25 kg / 18.19 lbs

What's in the Box

- 1 x JBL PartyBox Encore Essential 2 speaker
- 1 x Quick-start guide
- 1 x Safety Instruction and Warranty Card
- AC power cord - quantity and plug type vary by regions.



HARMAN International Industries, Incorporated
8500 Balboa Boulevard, Northridge, CA 91329 USA
www.jbl.com

© 2025 HARMAN International Industries, Incorporated. All rights reserved. JBL is a trademark of HARMAN International Industries, Incorporated, registered in the United States and/or other countries. Features, specifications and appearance are subject to change without notice.



Safety Instruction and Warranty Card Instructions de sécurité et fiche de la garantie

PRODUCT REGISTRATION ENREGISTREMENT DU PRODUIT

register.jbl.com

SIGN UP & STAY TUNED INSCRIVEZ-VOUS ET RESTEZ À JOUR

Register your product • Enregistrez votre produit • Registro del producto

*Product registration may not be available for all countries

*L'enregistrement des produits peut ne pas être possible dans certains pays.



↑
SCAN ME
BALAYEZ CE CODE



ENGLISH

Download the full warranty card and safety information and other helpful information from our website:
www.jbl.com/warrantyandsafetybooks

FRANÇAIS

Téléchargez la carte de garantie et les informations de sécurité complètes ainsi que d'autres informations utiles sur notre site Web :
www.jbl.com/warrantyandsafetybooks

FRANÇAIS (CANADA)

Téléchargez la fiche complète de la garantie et les informations de sécurité ainsi que d'autres renseignements utiles de notre site Web :
www.jbl.com/warrantyandsafetybooks

ESPAÑOL


Descarga la tarjeta de garantía completa, la información de seguridad y otra información útil de nuestro sitio web:
www.jbl.com/warrantyandsafetybooks



ENGLISH

IMPORTANT SAFETY INSTRUCTIONS

For all products:

1. Clean only with a dry cloth.
2. Do not block any ventilation openings. Install this apparatus in accordance with the manufacturer's instructions.
3. Do not install this apparatus near any heat sources such as radiators, heat registers, stoves or other apparatus (including amplifiers) that produce heat.
4. Do not defeat the safety purpose of the polarized or grounding-type plug. A polarized plug has two blades with one wider than the other. A grounding-type plug has two blades and a third grounding prong. The wide blade or the third prong is provided for your safety. If the provided plug does not fit into your outlet, consult an electrician for replacement of the obsolete outlet.
5. Protect the power cord from being walked on or pinched, particularly at plugs, convenience receptacles and the point where they exit from the apparatus.
6. Use only attachments/accessories specified by the manufacturer.
7. Use only with the cart, stand, tripod, bracket or table specified by the manufacturer or sold with the apparatus. When a cart is used, use caution when moving the cart/apparatus combination to avoid injury from tip-over. 
8. Unplug this apparatus during lightning storms or when unused for long periods of time.
9. Refer all servicing to qualified service personnel. Servicing is required when the apparatus has been damaged in any way, such as when the

power-supply cord or plug is damaged, liquid has been spilled or objects have fallen into the apparatus, or the apparatus has been exposed to rain or moisture, does not operate normally or has been dropped.

10. To disconnect this apparatus from the AC mains completely, disconnect the power-supply cord plug from the AC receptacle.
11. The mains plug of the power-supply cord shall remain readily operable.
12. This apparatus is intended to be used only with the power supply and/or charging cable provided by the manufacturer.

The following instructions may not apply to waterproof devices. Refer to your device user manual or quick start guide for more waterproof instruction if any.

- Do not use this apparatus near water.
- Do not expose this apparatus to dripping or splashing, and ensure that no objects filled with liquids, such as vases, are placed on the apparatus.

WARNING: TO REDUCE THE RISK OF FIRE OR ELECTRIC SHOCK, DO NOT EXPOSE THIS APPARATUS TO RAIN OR MOISTURE.

CAUTION

RISK OF ELECTRIC SHOCK. DO NOT OPEN.



THIS SYMBOL ON THE PRODUCT MEANS THERE IS UNINSULATED, DANGEROUS VOLTAGE WITHIN THE PRODUCT ENCLOSURE THAT MAY PRESENT A RISK OF ELECTRICAL SHOCK.



THIS SYMBOL ON THE PRODUCT MEANS THERE ARE IMPORTANT OPERATING AND MAINTENANCE INSTRUCTIONS IN THIS GUIDE.

CAUTION FCC AND IC STATEMENT FOR USERS

This device complies with part 15 of the FCC Rules. Operation is subject to the following two conditions: (1) This device may not cause harmful interference, and (2) this device must accept any interference received, including interference that may cause undesired operation.

CAN ICES(B)/NMB(B)

FCC SDOC SUPPLIER'S DECLARATION OF CONFORMITY

HARMAN International hereby declares that this equipment is in compliance with the FCC Part 15 Subpart B.

Federal Communication Commission Interference Statement

This equipment has been tested and found to comply with the limits for a Class B digital device, pursuant to Part 15 of the FCC Rules. These limits are designed to provide reasonable protection against harmful interference in a residential installation. This equipment generates, uses and can radiate radio frequency energy and, if not installed and used in accordance with the instructions, may cause harmful interference to radio communications. However, there is no guarantee that interference will not occur in a particular installation. If this equipment does cause harmful interference to radio or television reception, which can be determined by turning the equipment off and on, the user is encouraged to try to correct the interference by one or more of the following measures:

- Reorient or relocate the receiving antenna.
- Increase the separation between the equipment and receiver.
- Connect the equipment into an outlet on a circuit different from that to which the receiver is connected.
- Consult the dealer or an experienced radio/TV technician for help.

Caution: Changes or modifications not expressly approved by HARMAN could void the user's authority to operate the equipment.

For Products That Transmit RF Energy:

(i) This device contains licence-exempt transmitter(s)/receiver(s) that comply with Innovation, Science and Economic Development Canada's licence-exempt RSS(s). Operation is subject to the following two conditions:

(1) This device may not cause interference.

(2) This device must accept any interference, including interference that may cause undesired operation of the device.

(ii) Radiation Exposure statement

This equipment complies with FCC and IC RSS-102 radiation exposure limits set forth for an uncontrolled environment.

For radio equipment operates in 5150-5850MHz

FCC and IC Caution:

High power radars are allocated as primary users of the 5.25 to 5.35 GHz and 5.65 to 5.85 GHz bands. These radar stations can cause interference with and/or damage to LE-LAN (Licence-Exempt Local Area Network) devices. No configuration controls are provided for this wireless equipment allowing any change in the frequency of operations outside the FCC grant of authorization for US operation according to Part 15.407 of the FCC rules.

IC Caution:

User should also be advised that:

- (i) The device for operation in the band 5150 - 5250 MHz is only for indoor use to reduce the potential for harmful interference to co-channel mobile satellite systems;
- (ii) The maximum antenna gain permitted for devices in the bands 5250 - 5350 MHz and 5470 - 5725 MHz shall comply with the e.i.r.p. limit; and

- (iii) The maximum antenna gain permitted for devices in the band 5725 - 5825 MHz shall comply with the e.i.r.p. limits specified for point-to-point and non point-to-point operation as appropriate.

Use Restriction Attention in European Union, operation is limited to indoor use within the band 5150-5350 MHz.

For devices with headphone jacks

WARNINGS/CAUTIONS



Do NOT use the headphones at a high volume for any extended period.

- To avoid hearing damage, use your headphones at a comfortable, moderate volume level.

- Turn the volume down on your device before placing the headphones on your ears, then turn the volume up gradually until you reach a comfortable listening level.

For Products That Include Batteries

Instructions for Users on Removal, Recycling and Disposal of Used Batteries

To remove the batteries from your equipment or remote control, reverse the procedure described in the owner's manual for inserting batteries. For products with a built-in battery that lasts for the lifetime of the product, removal may not be possible for the user. In this case, recycling or recovery centers handle the dismantling of the product and the removal of the battery. If, for any reason, it becomes necessary to replace such a battery, this procedure must be performed by authorized service centers. In the European Union and other locations, it is illegal to dispose of any battery with household trash. All batteries must be disposed of in an environmentally sound manner. Contact your local waste-

management officials for information regarding the environmentally sound collection, recycling and disposal of used batteries.

WARNING: Danger of explosion if battery is incorrectly replaced. To reduce risk of fire, explosion or leakage of flammable liquid/gas, don't disassemble, crush, puncture, short external contacts, expose to temperature above 60°C (140°F), sunshine or like, expose to extremely low air pressure or dispose of in fire or water. Replace only with specified batteries. The symbol indicating 'separate collection' for all batteries and accumulators shall be the crossed-out wheeled bin shown below:



WARNING - For Products Contain Coin/Button Cell Batteries

DO NOT INGEST BATTERY, CHEMICAL BURN HAZARD. This product contains a coin/button cell battery. If the coin/button cell battery is swallowed, it can cause severe internal burns in just 2 hours and can lead to death. Keep new and used batteries away from children. If the battery compartment does not close securely, stop using the product and keep it away from children. If you think batteries might have been swallowed or placed inside any part of the body, seek immediate medical attention.

HARMAN International Industries, Incorporated. All rights reserved. JBL is a trademark of HARMAN International Industries, Incorporated, registered in the United States and/or other countries. Features, specifications and appearance are subject to change without notice.



WARRANTY CARD / FICHE DE LA GARANTIE

EN WARRANTY CARD

SET UP INFORMATION & PRODUCT REGISTRATION

Congratulations with the purchase of your new Product. We have done our utmost to make your experience the best one possible. If you have any questions when setting up your Product and would like some helpful hints, we recommend that you visit the relevant country-specific support website for your Product: www.jbl.com. There you will also find relevant contact information. If you cannot find the information you are looking for, please contact the vendor that sold the Product to you or contact the relevant JBL customer support center by electronic mail or phone.

We recommend that you register your Product via the relevant country specific website for your Product. Your registration will allow us to inform you about updates for certain products, possible new offers and new Products and/or applications. Registering is easy; just follow the instructions on the relevant country specific website for your Product.

NOTE: THIS LIMITED WARRANTY DOES NOT APPLY TO CONSUMERS IN THE EUROPEAN ECONOMIC AREA (EEA) MEMBER STATES, AUSTRALIA AND NEW ZEALAND AS THEY ARE PROTECTED BY LOCAL CONSUMER LAW AND BENEFIT FROM LOCAL STATUTORY WARRANTIES

misrepresentation by the seller; performance variations resulting from installation-related circumstances such as source quality or AC power or Product modifications, any unit on which the serial number has been effaced, modified or removed, or units used for other than home use. This Limited Warranty is valid only for JBL products purchased from an authorized dealer.

Except to the extent expressly prohibited in your jurisdiction by applicable law, all implied warranties, including fitness for a particular purpose and merchantability are hereby excluded and in no event shall HARMAN or any HARMAN subsidiary be liable for any indirect, direct, incidental, special or consequential loss or damages whatsoever (including, without limitation, other pecuniary loss) arising out of the use of or inability to use the Product, even if HARMAN and/or a HARMAN subsidiary have been advised of the possibility of such damages. To any extent that HARMAN cannot lawfully disclaim implied warranties under this Limited Warranty, all such implied warranties are limited in duration to the duration of this warranty. Some jurisdictions do not allow the exclusion or limitation of incidental or consequential damages or exclusions or limitations on the duration of implied warranties or conditions, so the above limitations or exclusions may not apply to you. This warranty gives you specific legal rights, and you may also have other rights that vary by jurisdiction.

HOW TO OBTAIN WARRANTY SERVICE

Contact the dealer who sold you this Product, or contact JBL customer support using the contact information on the relevant country specific support website for your Product to request warranty service. To validate your right to this Limited Warranty, you must provide the original sales invoice or other proof of ownership and date of purchase. Do not return your Product without prior authorization from the corresponding dealer or HARMAN. Warranty repair of the HARMAN Product must be carried out by an authorized dealer or service center. Unauthorized warranty repair will void the warranty and is performed at your sole risk.

You are also welcome to consult the relevant country specific HARMAN support website for your Product for helpful hints.

LIMITED WARRANTY

WHO IS PROTECTED BY THE WARRANTY

This limited warranty (the "Limited Warranty") protects only the original end-user ("you" or "your"), and is not transferable and is applicable only in the country (excluding EEA member states and the Russian Federation) in which you originally purchased your JBL Product (the "Product"). Any attempt to transfer this warranty shall immediately make this warranty void.

LIMITED WARRANTY

HARMAN International Industries, Incorporated ("HARMAN") is the manufacturer and through its local subsidiary, warrants to you that the Product (including components provided in with the Product) will be free from defects in workmanship and materials for a period of ONE year from the date of retail purchase by you (the "Warranty Period"). During the Warranty Period, the Product (including components), will be repaired or replaced at HARMAN's option, without charge for either parts or labor OR at HARMAN's sole option, the price of the Product may be refunded, subject to depreciation based on your purchase price for the Product pro-rated over the remaining balance of the Warranty Period. Any warranty service or replacement of parts will not extend the Warranty Period.

This Limited Warranty does not cover defects which are a result of: (1) damage caused by accident, unreasonable use or neglect (including the lack of reasonable and necessary maintenance); (2) damage during shipment (claims must be presented to the carrier); (3) damage to, or deterioration of, any accessory or decorative surface; (4) damage resulting from failure to follow instructions contained in your owner's manual; (5) damage resulting from the performance of repairs by someone other than an authorized JBL service center; (6) deterioration of component parts, the nature of which is to become worn or depleted with use, such as batteries and headphone ear pads.

Furthermore, this Limited Warranty covers only actual defects within the Product itself and does not cover the cost of installation or removal from a fixed installation, setup or adjustments, claims based on

WHO PAYS FOR WHAT

This Limited Warranty covers all expenses for labor and materials required for the repair OR replacement of the Product that is found to be defective, and a reasonable return shipping charge within the country of repair. Please be sure to save the original shipping carton(s), because a charge will be made for additional cartons/packaging.

You will be charged for the cost of examining a unit that is not in need of repair (including resulting shipping costs), or for necessary repairs not covered by this Limited Warranty.

We sincerely thank you for your expression of confidence in JBL. We wish you many years of listening pleasure.

HARMAN

HARMAN International Industries, Incorporated
8500 Balboa Boulevard, Northridge, CA 91329 USA



203024103

SSA2020-002_JBL_Non HP_Safety&Warranty_US_(130 x 60mm)_V3