

# QUICK START GUIDE

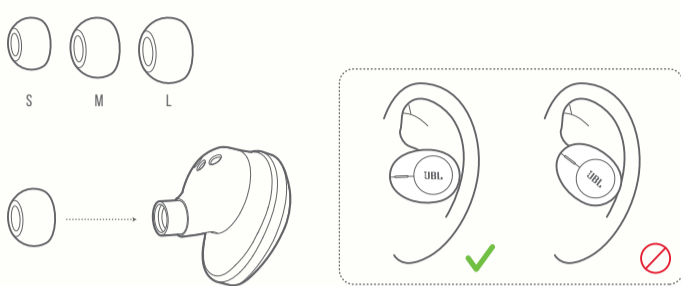
TUNE120TWS



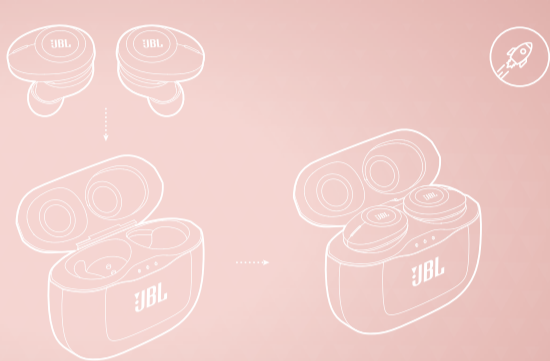
## WHAT'S IN THE BOX



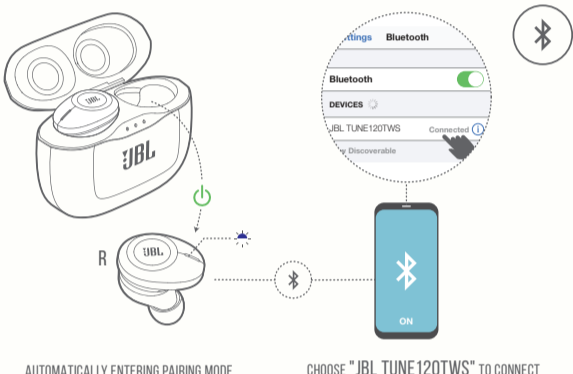
## HOW TO WEAR



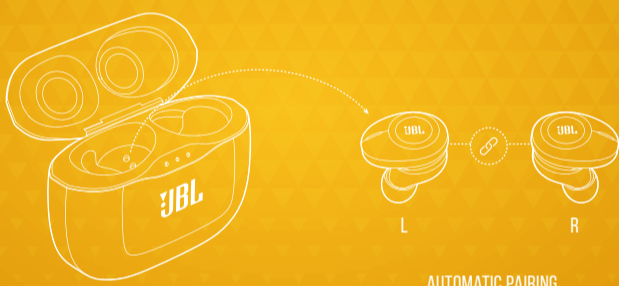
## FIRST TIME USE



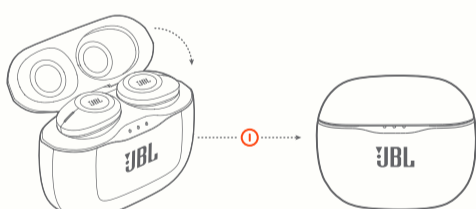
## POWER ON & CONNECT



## PAIRING



## POWER OFF



## MANUAL CONTROLS

POWER ON & CONNECT TO DEVICE



CONNECTING



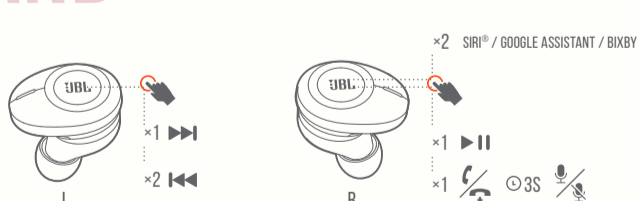
POWER ON



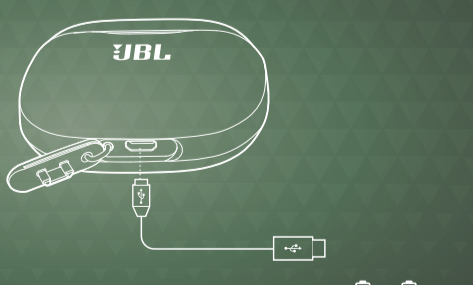
POWER OFF



## BUTTON COMMAND



## CHARGING



## LED BEHAVIORS

