

JBL Tune230NC TWS EarBuds

USER MANUAL



JBL



INTRODUCTION

The JBL Tune 230NC TWS earbuds are a wireless audio product manufactured by JBL, a well-known brand for audio equipment. These earbuds offer various features and capabilities to provide a convenient and immersive listening experience.

Here's a general introduction to the product:

Product Features:

True Wireless Stereo: The JBL Tune 230NC earbuds come as a pair, allowing you to enjoy true wireless stereo sound without any cables or wires between the earbuds.

Active Noise Cancelling (ANC): One of the notable features of the JBL Tune 230NC is its active noise-cancelling technology. ANC helps reduce background noise, allowing you to focus on your music or calls without distractions.

Bluetooth Connectivity: The earbuds connect to your smartphone or other compatible devices via Bluetooth. This wireless connection offers more freedom of movement and convenience during use.

High-Quality Sound: JBL is known for its audio quality, and the Tune 230NC is designed to deliver clear and balanced sound for music, videos, calls, and more.

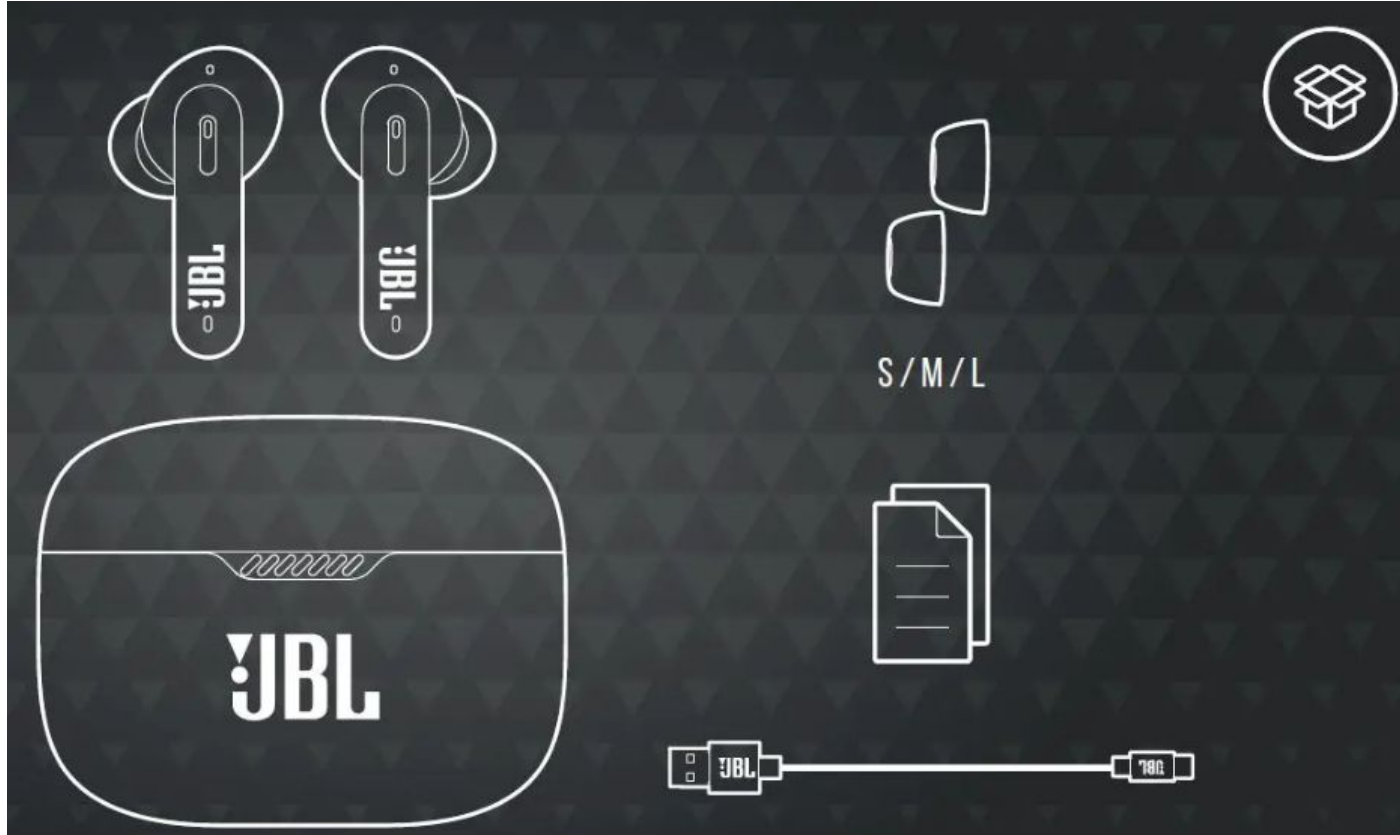
Comfortable Design: The earbuds are typically designed to be lightweight and comfortable, making them suitable for extended wear. They may come with multiple ear tip sizes to ensure a secure and comfortable fit for different users.

Touch Controls: The JBL Tune 230NC earbuds usually feature touch controls on the earpieces, allowing you to control music playback, volume, calls, and access voice assistants (such as Google Assistant or Siri) with simple taps or gestures.

Battery Life: The earbuds' battery life and the charging case can vary depending on usage and other factors. The charging case serves as a portable power bank, allowing you to recharge the earbuds on-the-go.

Please note that the specific features, functions, and instructions may vary based on the version and model of the JBL Tune 230NC TWS earbuds. To get detailed information on how to use and operate the earbuds, refer to the product manual that comes with the packaging or visit JBL's official website for downloadable user guides and support resources.

WHAT'S IN THE BOX



APP



JBL HEADPHONES

GET EVEN MORE CONTROL AND PERSONALIZATION OF YOUR LISTENING EXPERIENCE WITH THIS FREE APP.

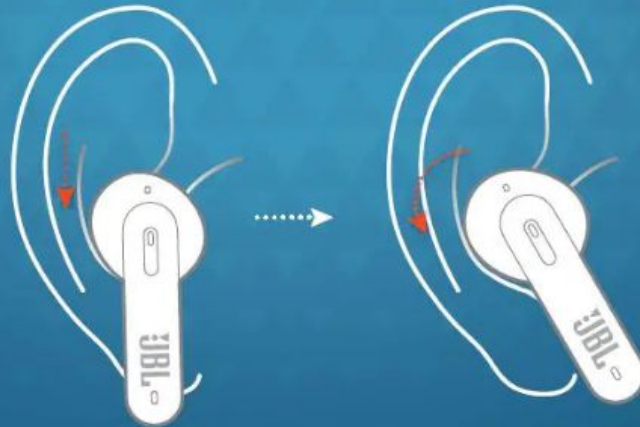


HO TO WEAR

1 TRY DIFFERENT SIZES FOR A PERFECT FIT AND AUDIO PERFORMANCE.



2



About this item

- JBL Pure Bass Sound: Smartly designed 10mm drivers enhanced by the Dot form factor deliver JBL Pure Bass Sound so you'll feel every pulsing beat.

Note : If the size of the earbud tips does not match the size of your ear canals or the headset is not worn properly in your ears, you may not obtain the correct sound qualities or call performance. Change the earbud tips to ones that fit more snugly in your ears

- **Product Note :** If the size of the earbud tips does not match the size of your ear canals or the headset is not worn properly in your ears, you may not obtain the correct sound qualities or call performance. Change the earbud tips to ones that fit more snugly in your ears
- **Active Noise Cancelling with Smart Ambient:** Hear more of what you want, less of what you don't. Active Noise Cancelling technology with 2 microphones lets you minimize audio distractions. With Ambient Aware, you can tune into your surroundings at any time so that you feel safer when you're out in the world, while TalkThru lets you stop for a quick chat without having to remove your headphones.

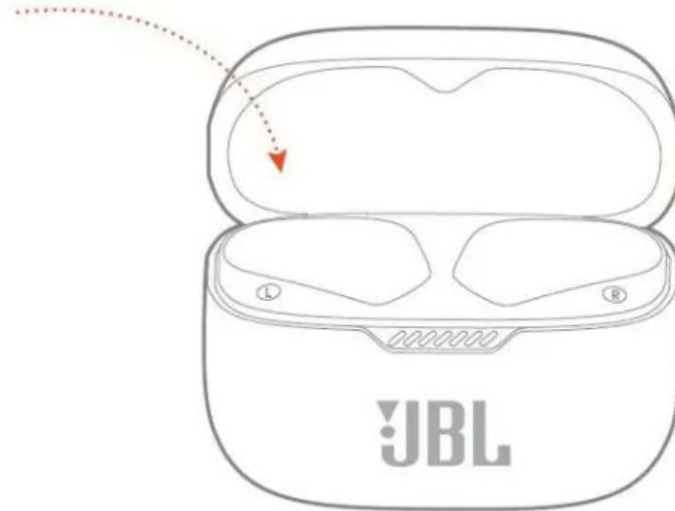
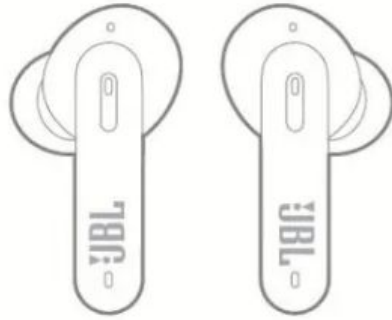
- **5 mics for perfect voice calls:** Enjoy hassle-free, hands-free calls in stereo. The Tune 230NC TWS are equipped with 4 microphones, so you'll always be heard with perfect clarity. Never hesitate to take or make a call again.

Note: If you face issue in Bluetooth connectivity please turn off the Bluetooth function for a couple of minutes, then turn it back on

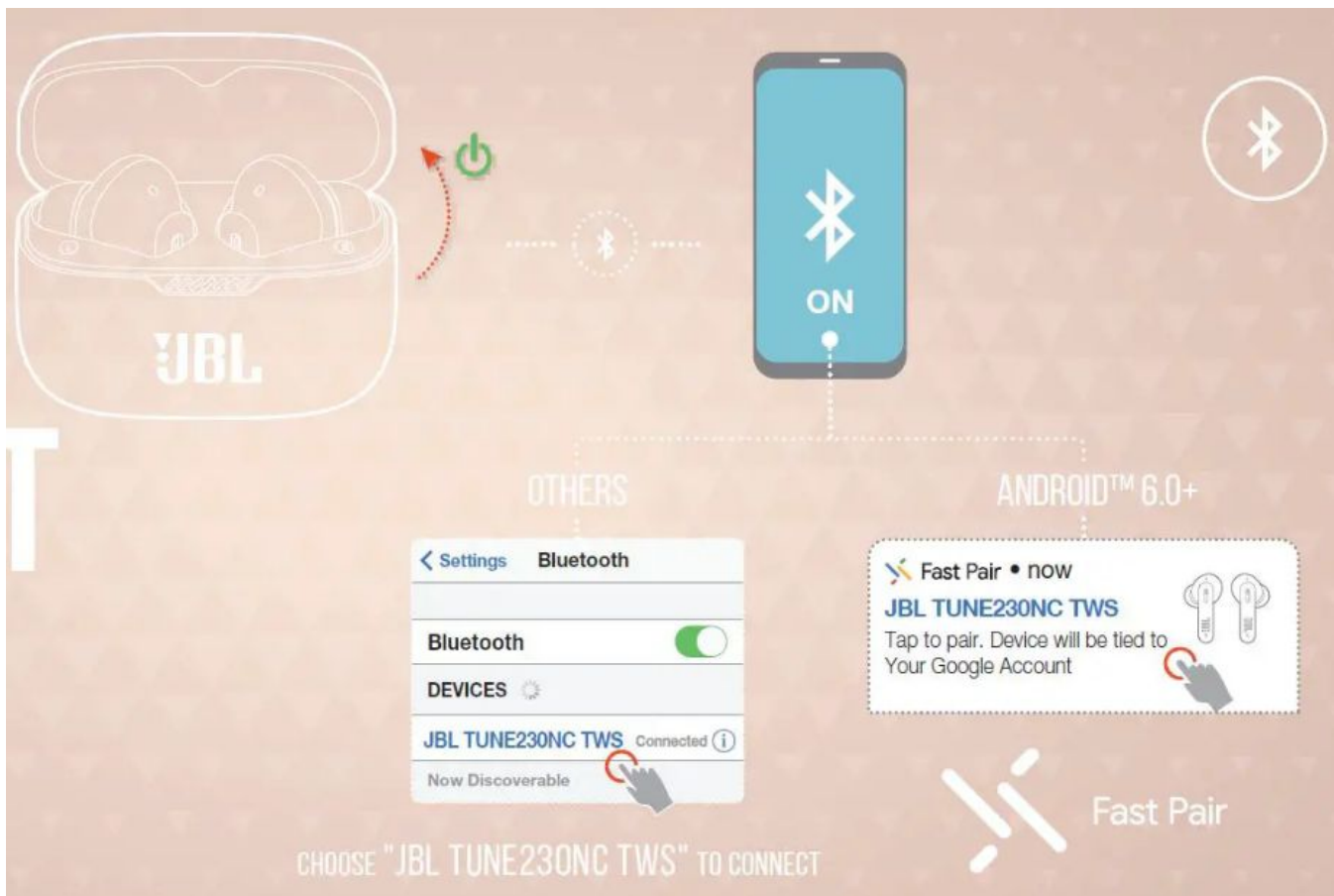
- **Up to 40 hours of battery life:** Never miss a beat with 40 (10 plus30) hours of battery life or 8 hours, plus 24 hours in the case when noise cancelling is engaged. Need a boost. Speed Charge for just ten minutes to get 2 hours of playtime.
- **Water resistant and sweatproof:** Don't be deterred by bad weather. Thanks to IPX4 water resistance and sweat proofing, there isn't a workout or downpour the Tune 230NC TWS can't handle.

Note: Products with electrical plugs are designed for use in the US. Outlets and voltage differ internationally and this product may require an adapter or converter for use in your destination. Please check compatibility before purchasing.

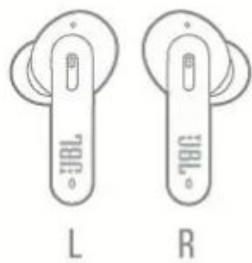
First time use



power on & CONNECT



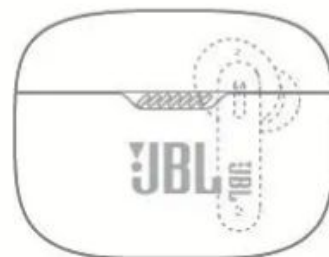
DUAL CONNECT + SYNC



STEREO MODE

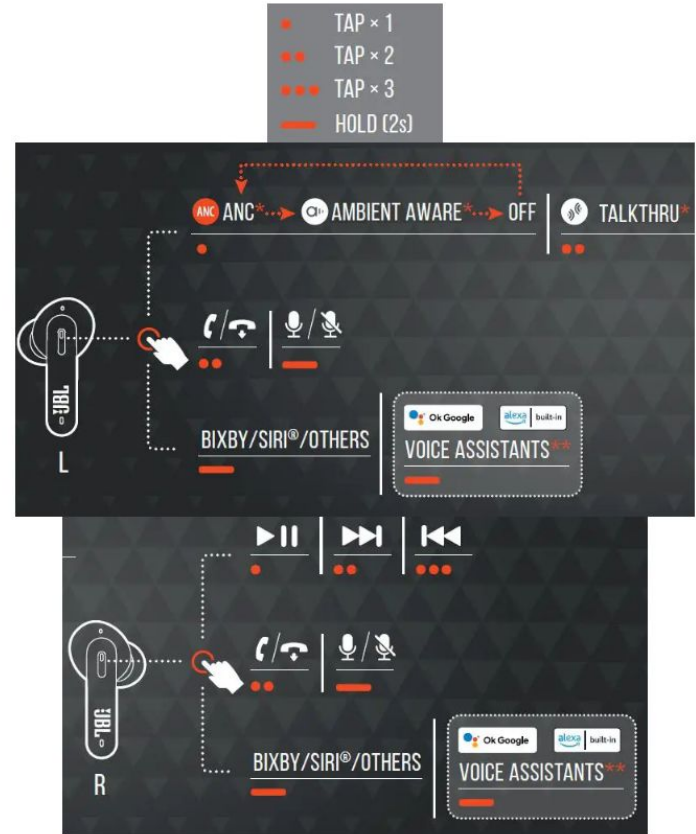


MONO MODE

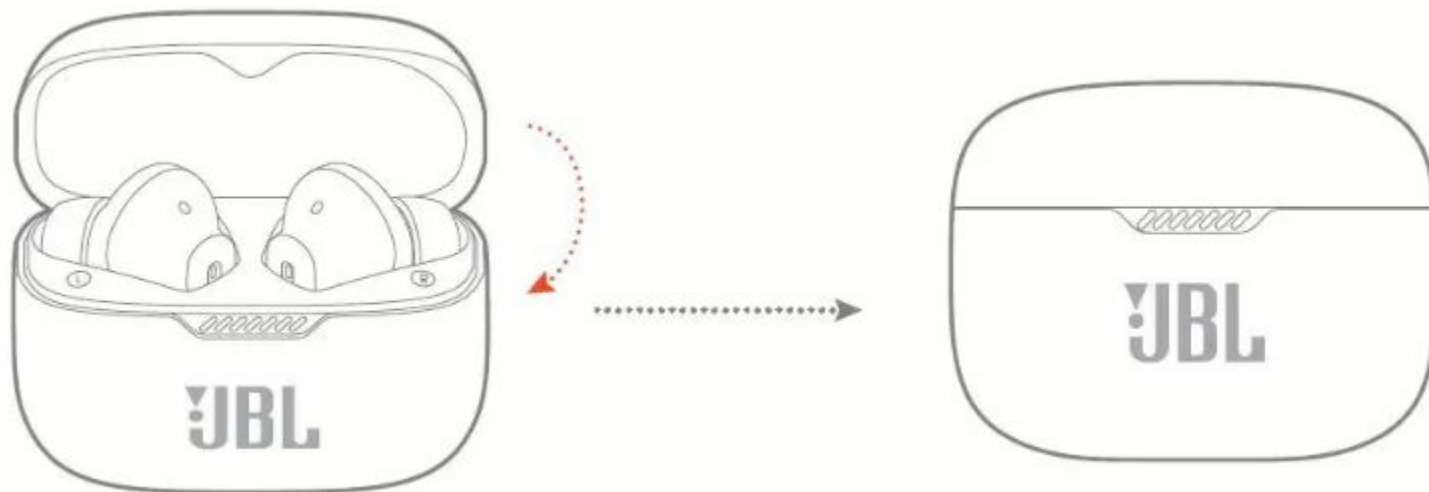


CONTROLS

- Enable advance controls by connecting your JBL TUNE230NC TWS to JBL Headphones AppJBL-Tune230NC-TWS-EarBuds-fig 13 .
- ENABLE YOUR VOICE ASSISTANT THROUGH JBL HEADPHONES APP AND ASSIGN IT TO YOUR PREFERRED EARBUD (L/R).



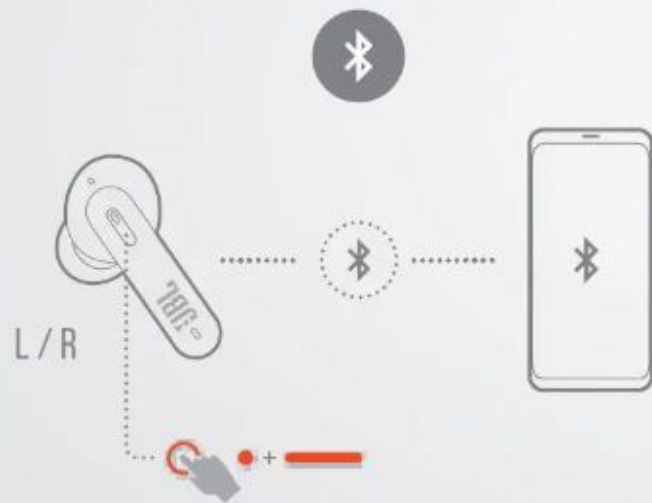
power off



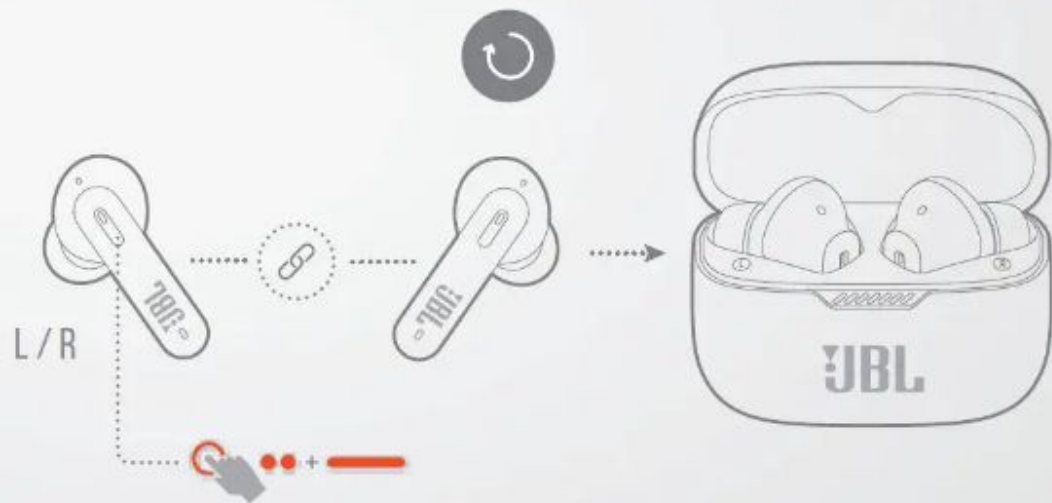
MANUAL SETUP

- TAP × 1
- TAP × 2
- HOLD (5s)

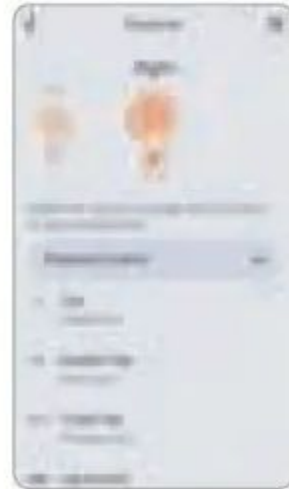
CONNECT TO A NEW BLUETOOTH DEVICE



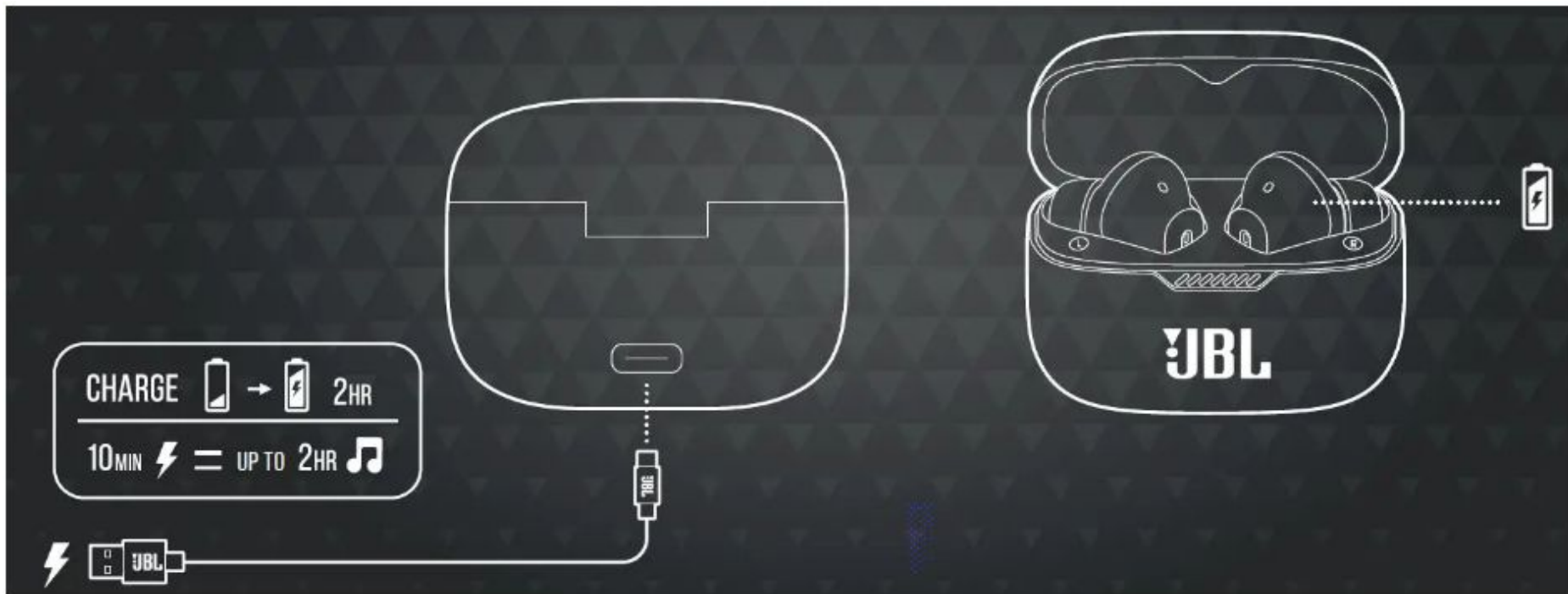
FACTORY RESET



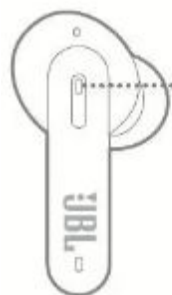
DO MORE WITH THE APP



Charging



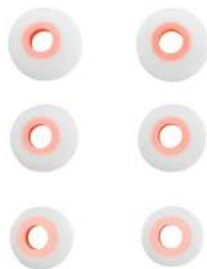
led behaviors



		BT CONNECTING
		BT CONNECTED
		BT NOT CONNECTED
		FACTORY RESET



			LOW BATTERY
			CHARGING
			FULLY CHARGED



FAQ



[Manuals.plus](https://www.manuals.plus)

- **Is JBL tune 230NC TWS waterproof?**

Don't be deterred by bad weather. Thanks to IPX4 water resistance and sweatproofing, there isn't a workout or downpour the Tune 230NC TWS can't handle.

- **Is JBL tune 230NC compatible with iPhone?**

Our JBL Tune 230NC is compatible with both Android and iOS devices.

- **Does JBL tune 230nc have wireless charging?**

Has wireless charging. It supports a wireless charging standard such as Qi.

FAQ



[Manuals.plus](https://www.Manuals.plus)

- **Do JBL earbuds have noise Cancelling?**

JBL Live Free NC+ TWS earbuds deliver JBL Signature Sound with supreme comfort. Stay in the groove all day long without noise or any distractions thanks to Active Noise Cancelling, while TalkThru and Ambient Aware keep you in touch with your friends and surroundings.

- **Why is my left wireless earbud not charging?**

Clean the AirPod and Charging Case Perhaps the most common reason an AirPod stops charging is because the charging contacts are dirty and have grime on the AirPod stem, inside the Charging Case, or both.

- **Why one side of my earphone is not working?**

If you are using wired earphones and you notice one side is silent, the first thing you should do is check to make sure the earphones are connected properly. Disconnect the headphones from the headphone jack and reinsert them. Make sure it snaps all the way in. See if this fixes the problem.

**Like And Subscribe
us for more Videos
Manuals.plus**



Manuals.plus

