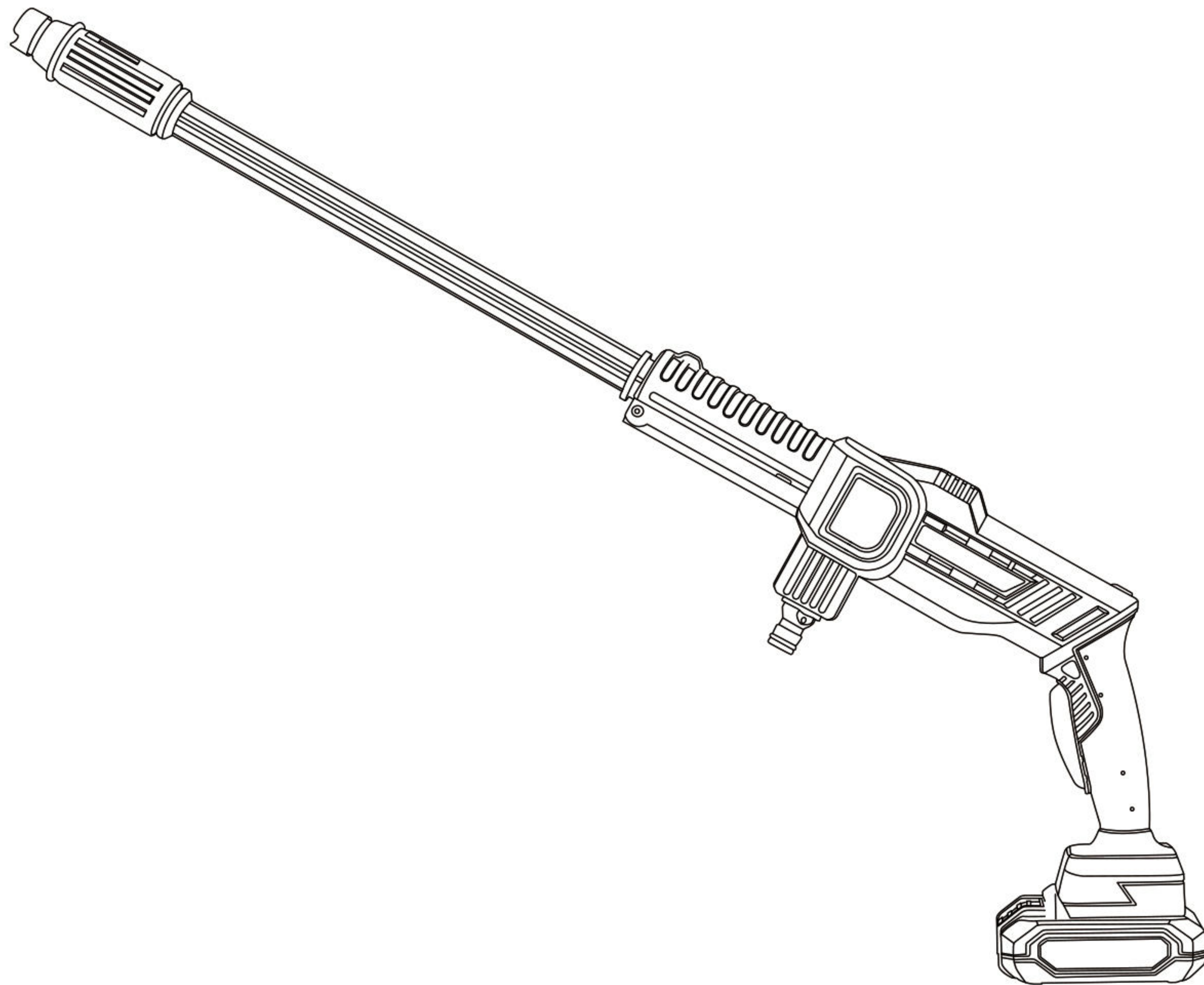


KIMO

INSTRUCTION MANUAL



MODEL 5018

20V Cordless Portable Pressure Washer



READ & UNDERSTAND INSTRUCTION MANUAL



Save all warnings and instructions for future reference.

www.kimotool.com

If you have questions or comments, contact us at

service@kimotools.com

TABLE OF CONTENTS

GENERAL SAFETY RULES	1
TOOL USE AND CARE	2
ADDITIONAL SPECIFIC SAFETY INSTRUCTIONS FOR PRESSURE WASHER	3
BATTERY USE AND CARE	4
IMPORTANT SAFETY FOR BATTERY PACKS	6
IMPORTANT SAFETY FOR BATTERY CHARGER	7
SPECIFICATIONS AND COMPONENTS	10
SPECIFIC INSTRUCTIONS	13
CLEANING AND STORAGE	19
TROUBLESHOOTING	20
WARRANTY	21
EXTENDED WARRANTY REGISTRATION	22

IF YOU HAVE ANY QUESTIONS OR COMMENTS ABOUT THIS OR ANY KIMO TOOL, EMAIL US AT:

service@kimotools.com

General Safety Rules - For All Tools



WARNING! Read and understand all instructions. Failure to follow all instructions listed below may result in electric shock, fire and/or serious personal injury.

GENERAL SAFETY RULES

WORK AREA

- **Keep your work area clean and well lit.** Cluttered benches and dark areas invite accidents.
- **Do not operate power tools in explosive atmospheres, such as in the presence of flammable liquids, gases, or dust.** Power tools create sparks which may ignite the dust or fumes.
- **Keep bystanders, children, and visitors away while operating a power tool.** Distractions can cause you to lose control.

ELECTRICAL SAFETY

- **Don't expose power tool key parts to rain or wet conditions.** Water entering a power tool key parts (eg. Motor, battery) will increase the risk of electric shock.

PERSONAL SAFETY

- **Stay alert, watch what you are doing and use common sense when operating a power tool.** Do not use tool while tired or under the influence of drugs, alcohol, or medication. A moment of inattention while operating power tools may result in serious personal injury.
- **Dress properly. Do not wear loose clothing or jewelry. Contain long hair. Keep your hair, clothing, and gloves away from moving parts.** Loose clothing, jewelry, or long hair can be caught in moving parts. Air vents often cover moving parts and should also be avoided.
- **Avoid accidental starting. Be sure switch is off before plugging in.** Carrying tools with your finger on the switch or plugging in tools that have the switch on invites accidents.
- **Do not overreach. Keep proper footing and balance at all times.** Proper footing and balance enables better control of the tool in unexpected situations.
- **Use safety equipment. Always wear eye protection.** Dust mask, non-skid safety shoes, hard hat, or hearing protection must be used for appropriate conditions.

TOOL USE AND CARE

- **Use clamps or other practical way to secure and support the work-piece to a stable platform.** Holding the work by hand or against your body is unstable and may lead to loss of control.
- **Do not use tool if switch does not turn it on or off.** Any tool that cannot be controlled with the switch is dangerous and must be repaired.

- **Store idle tools out of reach of children and other untrained persons.** Tools are dangerous in the hands of untrained users.
- **Check for misalignment or binding of moving parts, breakage of parts, and any other condition that may affect the tool's operation.** If damaged, have the tool serviced before using. Many accidents are caused by poorly maintained tools.
- **Use only accessories that are recommended by the manufacturer for your model.** Accessories that may be suitable for one tool, may become hazardous when used on another tool.
- **This appliance has been designed for use with the cleaning agent supplied or recommended by the manufacturer.** The use of other cleaning agents or chemicals may adversely affect the safety of the appliance.

ADDITIONAL SPECIFIC SAFETY INSTRUCTIONS FOR PRESSURE WASHER



WARNING: Handling the brass parts of this product will expose you to lead, a chemical known to the State of California to cause birth defects and other reproductive harm.

- Be careful about the high pressure: keep clear of nozzle.
- Pay attention to injection hazard. Equipment can cause serious injury if the spray penetrates the skin.
- In case of skin penetration, seek medical aid immediately.
- Do not point the gun at anyone or any part of the body.

- Do not spray flammable liquids.
- Before servicing, cleaning, or removing any parts, please shut off the power and relieve the pressure.
- This machine is not suitable for connection to the potable water mains.
- Do not spray electrical apparatus and wiring.
- Do not use the appliance within the range of persons unless they wear protective clothing.
- Do not use the appliance if important parts of the appliance are damaged, e.g. battery pack, pressure hoses, trigger, lance, nozzles.



WARNING! There is a risk of kickback and sudden torque load against the jet spray when the device is opened. Ensure that you are standing firmly and that you are holding the gun securely, otherwise you could injure yourself or other people.

BATTERY USE AND CARE

- **Only use batteries that are recommended for this tool by the manufacturer.** Use any other battery may cause risk of injury or fire.
- **Recharge only with the charger specified by the manufacturer.** A charger that is suitable for one type of battery pack may create a risk of fire when used with another battery pack.
- **When battery pack is not in use, keep it away from other metal objects like paper clips, coins, keys, nails, screws, or other small metal objects that can make a connection from one terminal to another.** Shorting the battery terminals together may cause burns or a fire.

- **Under abusive conditions, liquid may be ejected from the battery; avoid contact. If contact accidentally occurs, flush with water. If liquid contacts eyes, additionally seek medical help.** Liquid ejected from the battery may cause irritation or burns.
- **Do not use a battery pack or tool that is damaged or modified.** Damaged or modified batteries may exhibit unpredictable behavior resulting in fire, explosion or risk of injury.
- **Do not expose a battery pack or tool to fire or excessive temperature.** Exposure to fire or temperature above 265°F (130°C) may cause explosion.
- **Follow all charging instructions and do not charge the battery pack or tool outside the temperature range specified in the instructions.** Charging improperly or at temperatures outside the specified range may damage the battery and increase the risk of fire.
- **Before cleaning the charger, make sure to unplug it from any power source.** This will reduce the risk of an electrical shock.
- **Never attempt to open the batter pack for any reason.** If the battery pack case is damaged or cracked, do not insert it in to the charger.
- When ordering replacement battery packs, be sure to include the catalog number and voltage. **Consult us at service@kimotools.com.**

IMPORTANT SAFETY FOR BATTERY PACKS

The battery pack is not fully charged out of the carton. Before using the battery pack and charger, read the safety instructions below and then follow charging procedures outlined.

- **Do not charge or use the battery pack in explosive atmospheres, such as in the presence of flammable liquids, gases or dust.** Inserting or removing the battery pack from the charger may ignite the dust or fumes.
- **NEVER force the battery pack into the charger. Do not modify the battery pack in any way to fit into a non-compatible charger as battery pack may rupture causing serious personal injury.**
- Charge the battery packs only in designated **KIMO** chargers.
- **DO NOT** splash or immerse in water or other liquids.
- **Do not store or use the tool and battery pack in locations where the temperature may reach or exceed 104 °F (40 °C) (such as outside sheds or metal buildings in summer).** For best life store battery packs in a cool, dry location.

NOTE: Do not store the battery packs in a tool with the trigger switch locked on. Never tape the trigger switch in the ON position.



WARNING! Fire hazard. Never attempt to open the battery pack for any reason. If the battery pack case is cracked or damaged, do not insert into the charger. Do not crush, drop or damage the battery pack. Do not use a battery pack or charger that has received a sharp blow, been dropped, run over or damaged in any way (e.g., pierced with a nail, hit with a hammer, stepped on). Damaged battery packs should be returned to the service center for recycling.



WARNING! Fire hazard. Do not store or carry the battery pack so that metal objects can contact exposed battery terminals. For example, do not place the battery pack in aprons, pockets, tool boxes, product kit boxes, drawers, etc., with loose nails, screws, keys, etc. **Transporting batteries can possibly cause fires if the battery terminals inadvertently come in contact with conductive materials such as keys, coins, hand tools and the like.** The US Department of Transportation Hazardous Material Regulations (HMR) actually prohibits transporting batteries in commerce or on airplanes (e.g., packed in suitcases and carry-on luggage) UNLESS they are properly protected from short circuits. So when transporting individual battery packs, make sure that the battery terminals are protected and well insulated from materials that could contact them and cause a short circuit.

IMPORTANT SAFETY FOR BATTERY CHARGER

- **DO NOT attempt to charge the battery pack with any chargers other than the ones in this manual.** The charger and battery pack are specifically designed to work together.
- **These chargers are not intended for any uses other than charging KIMO rechargeable batteries.** Any other uses may result in risk of fire, electric shock or electrocution.
- **Do not expose the charger to rain or snow.**
- **Pull by the plug rather than the cord when disconnecting the charger.** This will reduce the risk of damage to the electric plug and cord.
- **Make sure that the cord is located so that it will not be stepped on, tripped over or otherwise subjected to damage or stress.**

- **Do not use an extension cord unless it is absolutely necessary.** Use of improper extension cord could result in risk of fire, electric shock or electrocution.
- **When operating a charger outdoors, always provide a dry location and use an extension cord suitable for outdoor use.** Use of a cord suitable for outdoor use reduces the risk of electric shock.
- **Do not place any object on top of the charger or place the charger on a soft surface that might block the ventilation slots and result in excessive internal heat.** Place the charger in a position away from any heat source. The charger is ventilated through slots in the top and the bottom of the housing.
- **Do not operate the charger with a damaged cord or plug.**
- **Do not operate the charger if it has received a sharp blow, been dropped or otherwise damaged in any way.** Contact us immediately.
- **Do not disassemble the charger; take it to an authorized service center when service or repair is required.** Incorrect reassembly may result in a risk of electric shock, electrocution or fire.
- **Disconnect the charger from the outlet before attempting any cleaning.** This will reduce the risk of electric shock. Removing the battery pack will not reduce this risk.
- **NEVER** attempt to connect 2 chargers together.
- **The charger is designed to operate on standard 120V household electrical power. Do not attempt to use it on any other voltage.** This does not apply to the vehicular charger.



WARNING! Shock hazard. Do not allow any liquid to get inside the charger. Electric shock may result.



CAUTION! Burn hazard. To reduce the risk of injury, charge only KIMO rechargeable battery packs. Other types of batteries may overheat and burst resulting in personal injury and property damage.

NOTE:

Under certain conditions, with the charger plugged into the power supply, the charger can be shorted by foreign material. Foreign materials of a conductive nature, such as, but not limited to, grinding dust, metal chips, steel wool, aluminum foil or any buildup of metallic particles should be kept away from the charger cavities. Always unplug the charger from the power supply when there is no battery pack in the cavity. Unplug the charger before attempting to clean.



WARNING! Never modify the power tool or any part of it. Damage or personal injury could result.

SEPCIFICATIONS AND COMPONENTS

INTENDED USE

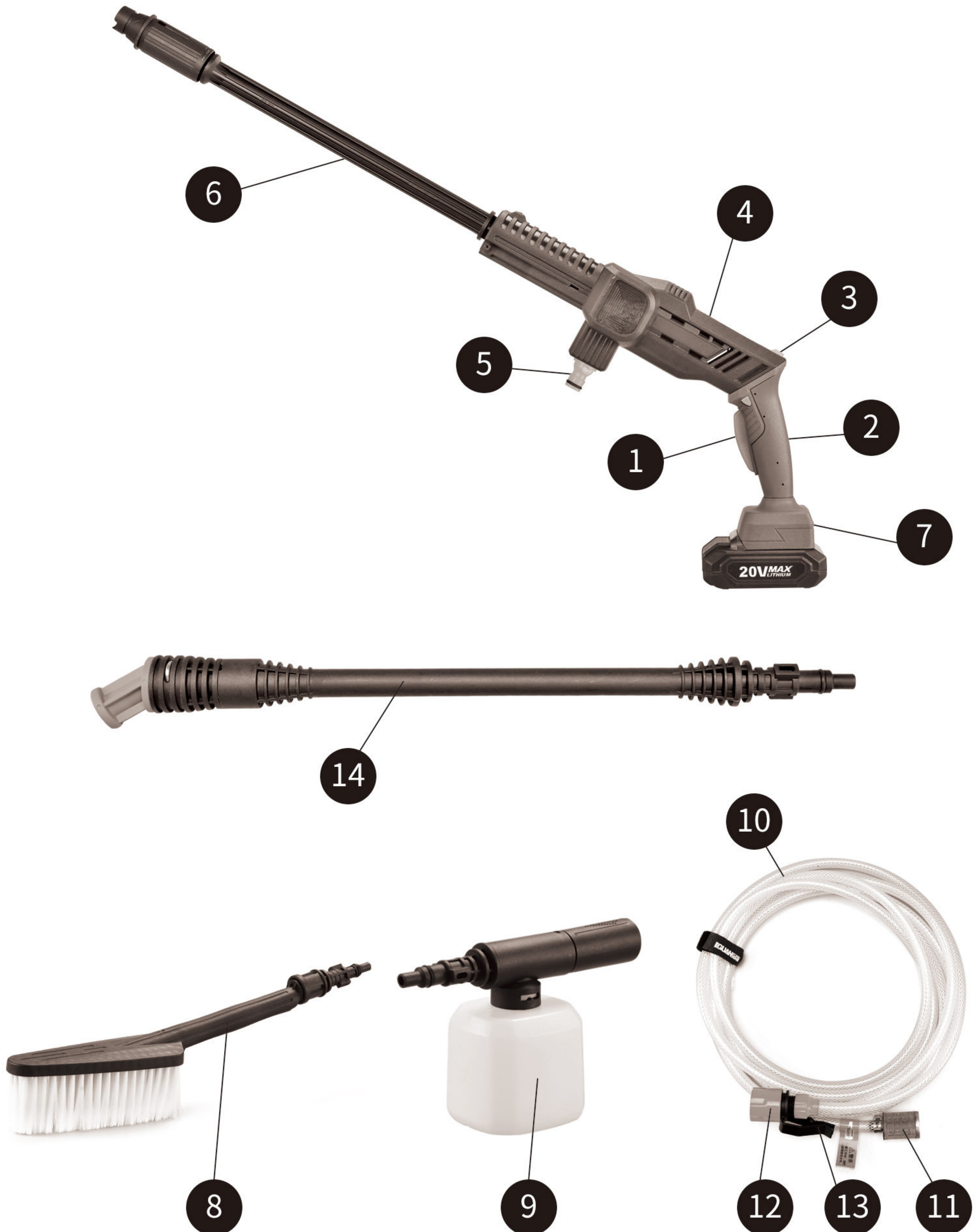
This cordless high-pressure power washer is intended for residential use to clean vehicles, machines, buildings, facades, etc.

NOTE: The cordless high-pressure washer is designed to be used with cold or lukewarm water; higher temperatures can damage the pump.
Do not use water that is dirty, gritty, or contains any chemical products, as these could impair operation and shorten the life of the machine.

SPECIFICATIONS

Model	5018
Charger Voltage	120V~60Hz
Voltage	20V
Max. Water Pressure	250psi
Max. Flowing Rate	3 L/minute
Weight	3.3 lbs

COMPONENTS AND SPECIFICATIONS



1. On/Off Switch Lever
2. Lock-off Switch
3. Handle Adjustment Button
4. Pressure Controller
5. Hose Adapter
6. Pressure Cleaning Lance
7. Battery Pack
8. Brush
9. Soap Bottle
10. Draw Hose
11. Hose Filter
12. Hose Connector
13. Hose Clip
14. Angle Lance

ATTACHMENT OF ACCESSORIES

A number of accessories have been supplied with this product and are required for use in different applications.

Do not attempt to use the cleaner with no lance or accessories attached.

1. Soap bottle (⑨)

Soap bottle provides detergent suds for deeper cleaning of dirt.

NOTE: Make sure the machine is connected to the water source before using the soap bottle.

2. Brush (⑧)

Brush is for cleaning cars, boats, motorcycles etc.

SPECIFIC INSTRUCTIONS

Installing and Removing the Battery Pack from the Tool



NOTE: For best results, make sure your battery pack is fully charged. (The image of battery shown here is indicative only. If there is inconsistency between the image and the actual product, the actual product shall govern.)

NOTE: Operating temperature of this tool is 19 ° to 104 °F (-7 ° to +40 °C). Using the tool outside of this temperature range will decrease the life of the tool.

To install the battery pack (①) into the tool handle, align the battery pack with the rails inside the tool's handle and slide it into the handle until the battery pack is firmly seated in the tool and ensure that it does not disengage.

To remove the battery pack from the tool, press the release button (②) and firmly pull the battery pack out of the tool handle. Insert it into the charger as described in the charger section of this manual.



CAUTION! Ensure the battery is removed before attaching or removing the tube. The tube must be attached to the housing before use.

Charging Procedure

KIMO chargers are designed to charge KIMO battery packs in 40 to 60 minutes depending on the pack being charged.

To charge the battery:

1. Insert/Slide the battery pack into the charger as shown as below.



2. Plug the charger into an appropriate outlet after inserting the battery pack.

Recharge discharged batteries as soon as possible after use or battery life may be greatly diminished. for longest battery life, do not discharge batteries fully. It is recommended that the batteries be recharged after each use.

NOTE: Battery packs for this tool are shipped in a low charge condition to prevent possible problems.

NOTE: A battery that is new or has not been used for a longer period does not develop its full capacity until after approx. 5 charge/discharge cycles.

Charger:

Red Indicator	Green Indicator	Battery Pack	Status
ON	OFF	Charging	Charging
OFF	ON	Charged	Fully Charged
OFF	OFF	Short Circuited	Short Circuited

Fuel Gauge Battery Packs:

KIMO 20V 2.0 battery pack includes a fuel gauge which consists of four LED lights that indicate the level of charge remaining in the battery pack. The fuel gauge is an indication of approximate levels of charge remaining in the battery pack according to the following indicators:

Remaining Capacity	Indicator Lights	
≤ 20%	○ ○ ○ ○	Red Flashing
20% — 40%	● ○ ○ ○	Red On
40% — 60%	● ● ○ ○	Red & Yellow On
60% — 80%	● ● ● ○	Red, Yellow & Green On
80% — 100%	● ● ● ●	All Lights On



IMPORTANT SAFETY INSTRUCTIONS FOR BATTERY CARTRIDGE

- 1. If operating time has become excessively shorter, stop operating immediately. It may result in a risk of overheating, possible burns and even an explosion.**

2. Do not short the battery cartridge:

- (1) Do not touch the terminals with any conductive material.
- (2) Avoid storing battery cartridge in a container with other metal objects such as nails, coins, etc.
- (3) Do not expose battery cartridge to water or rain.

A battery short can cause a large current flow, overheating, possible burns and even a breakdown.

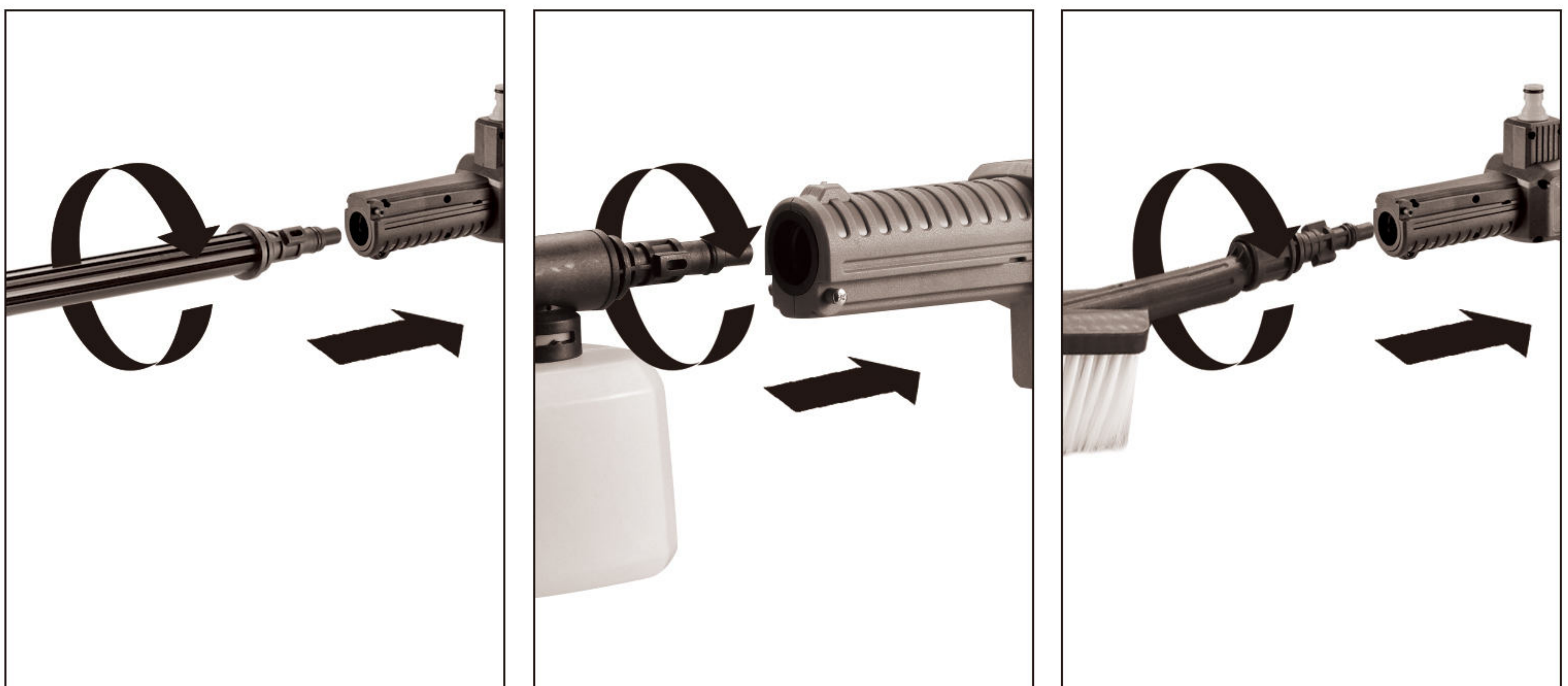
3. Do not incinerate the battery cartridge even if it is severely damaged or is completely worn out. The battery cartridge can explode in a fire.

4. Be careful not to drop or strike battery.

5. Follow your local regulations relating to disposal of battery.

Operation

Attaching the Cleaning Lance



When attaching, align the two projections on the lance/brush/bottle with grooves of the power nozzles as show in the picture.

NOTE: The highest pressure is 250 psi, and it is suitable for removing most stains.

Attaching the Draw Hose



Attach the draw hose to the power nozzle with a click sound.

NOTE: Please check the connection by gently pulling upon the draw hose. It should not be pulled off.

Switch On/Off



Press the lock-off button first and then press the on/off switch on the handle to start the appliance.

NOTE: At the first use, you need to empty the air in hose, place the power nozzle below waist level (<5ft /1.5m), then attach the lance and set it at high pressure. Do not start working until the water goes up along the hose and sprays out. This could take up to 30 seconds or more depending on the fresh water source.

CLEANING AND STORAGE

Before storage, completely drain all the water from the machine and hose. Clean the moulded plastic housing of the machine using a soft brush and clean cloth. Do not use water, solvents or polishes. Store in a secure and dry place out of the reach of children. Do not place other objects on the product. Store the machine and the accessories in a frost free place.



WARNING! RISK OF PERSONAL INJURY DUE TO CHEMICAL EXPOSURE.

Always wear appropriate personal protection equipment as instructed by chemical manufacturer when using, preparing, handling, spraying, or disposing of chemicals. This includes at least goggles, gloves, and protective clothing. Prior to performing maintenance always depressurize Sprayer by turning off the tool and operating the Pressure Release Valve until no pressure remains in the Tank.



CAUTION: RISK OF DAMAGE TO INTERNAL COMPONENTS.

Failure to properly rinse out the Sprayer may allow chemical residue build-up that can clog or damage the Filters, Pump, Shut-off, Wand, and Nozzle. Chemical residue build-up can also contaminate subsequent applications. Leaving chemical liquids in the Sprayer when not in use can lead to premature Sprayer wear. Never store Sprayer with chemical in any part of the Sprayer.

TROUBLE SHOOTING

Symptoms	Possible Causes	Solutions
Machine turns on but it does not draw any water or there is no sufficient pressure.	<ul style="list-style-type: none"> ● Power nozzle is too high from the water source surface. ● Hose filter is blocked. ● The users garden hose is not well connected to the machine. ● Hose adapter looses. ● Pump, hose, or other parts are frozen due to outside temperature. ● Hose kinks. ● Additional air could be sucked into the machine. 	<ul style="list-style-type: none"> ● Lower then machine below 5ft. ● Take out the hose filter and rinse the parts with clean water. ● Check and reattach the garden hose tightly. ● 0 ● Wait for the pump, hose or other parts to thaw. ● Straighten out the hose. ● If air builds up within the hose or pump, the water pressure will drop. First, restart the machine, then air will be released through the unit along with water.
Machine drains out water after stopping.	<ul style="list-style-type: none"> ● There is water remaining in the lance and pump after stopping. 	<ul style="list-style-type: none"> ● Drain all the water completely before storage.
Soap accessory cannot spray out any detergent.	<ul style="list-style-type: none"> ● Blockage in the soap bottle. ● The machine is not connected to the water source. 	<ul style="list-style-type: none"> ● Clean with fresh water. ● Connect to water source before turning on the machine.
Machine does not turn on.	<ul style="list-style-type: none"> ● The battery pack is not attached well. ● Battery pack is empty. ● Defective battery. 	<ul style="list-style-type: none"> ● Reinstall the battery pack. ● Replace with a new battery or recharge the battery. ● Contact us for the replacement.
Machine pressure is not consistent.	<ul style="list-style-type: none"> ● Additional air could be sucked into the machine. ● It is at low pressure setting. 	<ul style="list-style-type: none"> ● Check connection between the hose adapter and the draw hose. ● Adjust the pressure by pressing pressure controller.
Machine stops automatically.	<ul style="list-style-type: none"> ● Battery pack is empty. 	<ul style="list-style-type: none"> ● Replace with a new battery or recharge the battery.

WARRANTY

Every KIMO power tool is warranted to the original purchaser only to be free from defects in material and workmanship. Subject to certain exceptions, KIMO will replace any part on an electric power tool that is defective in material or workmanship for a period of 2 years after the date of purchase unless otherwise noted. This warranty does not apply to damage from repairs made or attempted by anyone other than KIMO, misuse, alterations, abuse, normal wear and tear, lack of maintenance, or accidents.

Normal Wear: Many power tools need periodic parts replacement and service to achieve best performance. This warranty does not cover repair when normal use has exhausted the life of a part including, but not limited to, chucks, brushes, cords, saw shoes, blade clamps, o-rings, seals and driver blades.

Warranty Registration is not necessary to obtain the applicable warranty on a KIMO power tool product.

This warranty applies to product sold in the U.S.A. only.

EXTENDED WARRANTY REGISTRATION

Dear Customer,

Thank you very much for choosing KIMO. At KIMO, customer satisfaction is our highest priority. In order to provide the best services, we would like to offer you an extra 6-month limited warranty. Below is the free registration process.

To register our extended warranty for your KIMO product, please send your name, your email AND your Amazon order number to **Service@kimotools.com**. Our customer services representative will help you register within 24 hours.

Disclaimer: This policy is at the manufacturer's discretion.

Best Regards,
KIMO Customer Support