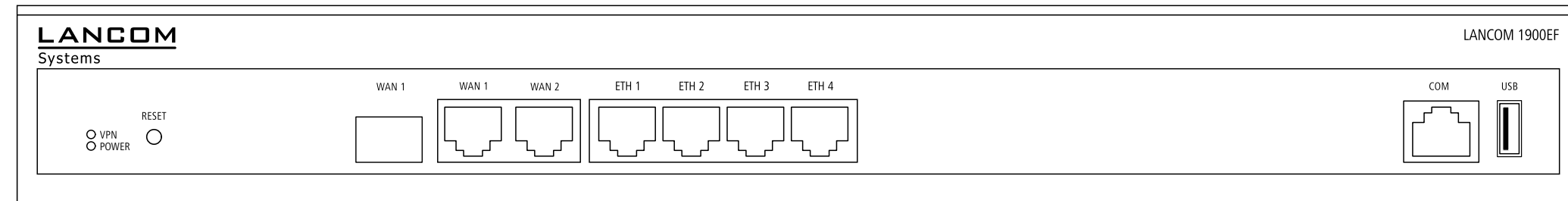
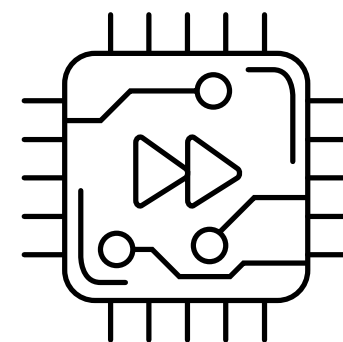
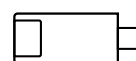


## Hardware Quick Reference LANCOM 1900EF



- ①
- ②
- ③
- ④
- ⑤

**① WAN 1 interfaces (SFP / TP combo port)**  
Insert a suitable SFP module (e.g. 1000Base-SX or 1000Base-LX) into the SFP port. Choose a cable compatible with the SFP module and connect it as described in the module's documentation. SFP module and cable are not included.  
If desired, alternatively connect the WAN 1 TP interface to a WAN modem using the provided Ethernet cable with green connectors.



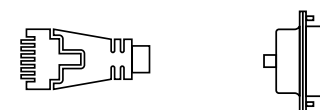
**② WAN 2 interface (TP)**  
Connect the WAN 2 interface to a WAN modem using the provided Ethernet cable with green connectors.



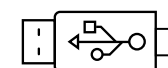
**③ Ethernet interface**  
Use the cable with the kiwi-colored connectors to connect one of the interfaces ETH 1 to ETH 4 to your PC or a LAN switch.



**④ Configuration interface**  
To configure the device via the serial interface, a serial configuration cable is required (available as an accessory).



**⑤ USB interface**  
You can use the USB interface to connect a USB printer or a USB storage device.



**⑥ Power connector and grounding point (device back side)**  
Supply power to the device via the power connector. Please use the IEC power cable supplied (separately available for WW devices).



**ATTENTION:** High touch current possible! Connect to earth before connecting the power supply.

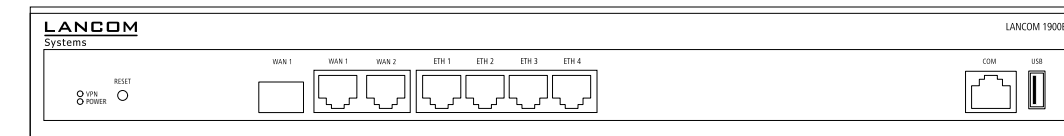


**Before initial startup, please make sure to take notice of the information regarding the intended use in the enclosed installation guide!**

**Operate the device only with a professionally installed power supply at a nearby power socket that is freely accessible at all times.**

**Please observe the following when setting up the device**

- The mains plug of the device must be freely accessible.
- For devices to be operated on the desktop, please attach the adhesive rubber footpads
- Do not rest any objects on top of the device and do not stack multiple devices
- Keep all ventilation slots of the device clear of obstruction
- Mount the device into a 19" unit in a server cabinet using the provided screws and mounting brackets. Pay attention to the "R" and "L" marks on the brackets for accurate mounting.



- ①
- ②
- ③
- ④

### ① VPN / POWER

<b>VPN</b>	
Off	VPN connection inactive
Green, permanently	VPN connection active
Green, flashing	VPN connecting

### POWER

Off	Device switched off
Green, permanently*	Device operational, resp. device paired / claimed and LANCOM Management Cloud (LMC) accessible
Green / red, blinking	No password set. Without a password the configuration data in the device is unprotected.
Red, blinking	Charge or time limit reached
1x green inverse blinking*	Connection to the LMC active, pairing OK, device not claimed
2x green inverse blinking*	Pairing error, resp. LMC activation code not available
3x green inverse blinking*	LMC not reachable resp. communication error

### ② RESET

Reset button	short press > Restart the device long press > Reset the device
--------------	---

### ③ WAN 1 / WAN 2

Green, orange off	No networking device connected
Green, permanently	Connection to network device operational, no data traffic
Green, flickering	Data transmission
Orange off	1000 Mbps
Orange, permanently	10 / 100 Mbps

### ④ ETH 1 - ETH 4

Green, orange off	No networking device connected
Green, permanently	Connection to network device operational, no data traffic
Green, flickering	Data transmission
Orange off	1000 Mbps
Orange, permanently	10 / 100 Mbps

\*1) The additional power LED statuses are displayed in 5-seconds rotation if the device is configured to be managed by the LANCOM Management Cloud.

### Hardware

Power supply	Internal power supply unit (100-240 V, 50-60 Hz)
Power consumption	Max. 18 W
Environment	Temperature range 0-40 °C, humidity 0-95 %, non-condensing
Housing	Robust metal housing, 1 HU with mounting brackets for 19" installation, 345 x 44 x 253 mm (W x H x D)
Number of fans	None; fanless design, no rotating parts, high MTBF

### Interfaces

WAN 1 / WAN 2	WAN 1 SFP: Compatible with optional LANCOM SFP modules. Set as a WAN port ex-factory, can be configured as a LAN port. WAN 1 / WAN 2 TP: 10 / 100 / 1000 Base-TX, autosensing full duplex (WAN 1) / autosensing (WAN 2), auto node hub
ETH1 - ETH 4	4 individual ports, 10 / 100 / 1000 Mbps Gigabit Ethernet, by default set to switch mode. Up to 3 ports can be operated as additional WAN ports. Ethernet ports can be electrically disabled in the LCOS configuration.
Config (Com) / V.24	Serial configuration interface / COM-port: 9,600 - 115,200 baud
USB	USB 2.0 hi-speed host port for connecting USB printers (USB print server), serial devices (COM-port server) or USB drives (FAT file system)

### WAN protocols

Ethernet	PPPoE, Multi-PPPoE, ML-PPP, PPTP (PAC or PNS) and IPoE (with or without DHCP), RIP-1, RIP-2, VLAN, GRE, EoGRE, L2TPv2 (LAC or LNS), IPv6 over PPP (IPv6 and IPv4/IPv6 dual stack session), IP(v6)oE (autoconfiguration, DHCPv6 or static)
----------	---

### Package content

Cables	1 Ethernet cable, 3 m (kiwi colored connectors); 1 Ethernet cable, 3 m (green connectors); 1 IEC power cord 230 V (not for WW devices)
Mounting brackets	Two 19" brackets for rack mounting

Hereby, LANCOM Systems GmbH | Adenauerstrasse 20/B2 | D-52146 Wuersele, declares that this device is in compliance with Directives 2014/30/EU, 2014/35/EU, 2011/65/EU, and Regulation (EC) No. 1907/2006. The full text of the EU Declaration of Conformity is available at the following Internet address: [www.lancom-systems.com/doc/](http://www.lancom-systems.com/doc/)