



Mi • Light
Subordinate New Brand

2 in 1 LED Controller (Zigbee 3.0 + 2.4G) Instruction Manual

Contents

<u>Product features</u>	2
<u>Set up output mode</u>	3
<u>PUSH Dimming</u>	3
<u>Compatible with remote</u>	3
<u>2.4G RF remote control instruction</u>	4-5
<u>Link / Unlink Instructions</u>	4
<u>Auto transmitting</u>	5
<u>PWM frequency switching</u>	5
<u>“Do Not Disturb” mode is activated and shut down</u>	5
<u>Smartphone app control instruction</u>	6
<u>Philips Hue control instruction</u>	7
<u>Alexa voice control instruction</u>	8
<u>Google home voice control instruction</u>	9
<u>Attention</u>	10

Product features

Made by new Zigbee 3.0 wireless transmitting technology with low power consumption, strong ability to build network automatically and anti-interference. with MiBoxer Zigbee gateway to get wireless dimming color temperature and brightness, remote control, timing control, group control, music rhythm function. Support 2.4G RF remote control.



Color temperature adjustable



Dim brightness



Follow Zigbee 3.0 standard protocol



Support Zigbee 3.0 remote control (Zigbee 3.0 gateway is needed)



Support 2.4G Remote control



Auto-transmitting



Support Smartphone app control (Zigbee 3.0 gateway is needed)



Support third party voice control (Zigbee 3.0 gateway is needed)

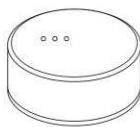
Various control solution:



Philips
Hue



MiBoxer
Zigbee Gateway



IKEA
TRÅDFRI



2.4GHz
Remote



Amazon
Echo Plus



Set up output mode

Set up correct output mode based on the feature of lights

Setting method: Press "SET" button continuously to switch output mode (attention: it will log out without operation within 3 seconds)

Output mode sheet (confirm output mode based on color of indicator)

Indicator color	Red Light	Green Light
Output	Single Color Mode	Dual White Mode

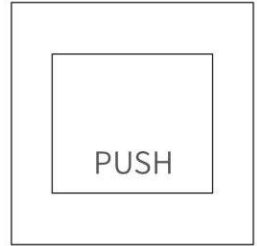
PUSH Dimming

Short press PUSH switch:

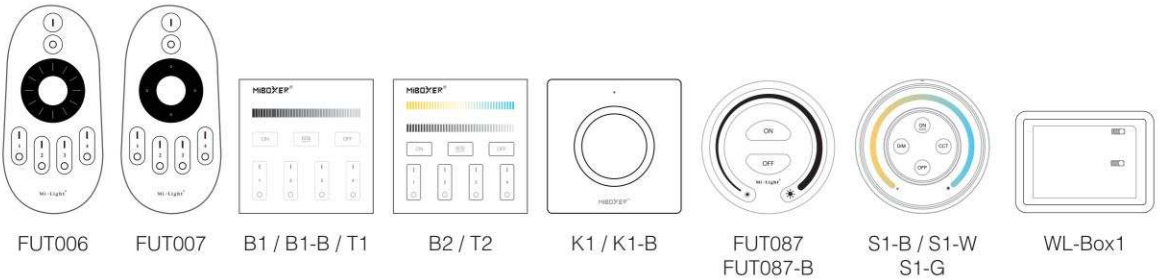
Turn ON/OFF light

Long press PUSH switch:

- Stepless dimming brightness.
- Long press and release your finger, then repeat long pressing to increase or decrease brightness.

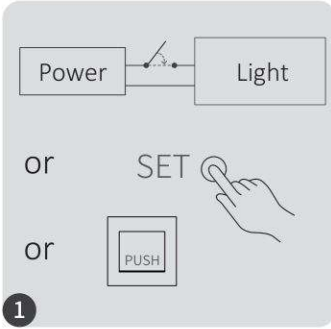


Compatible with these 2.4G RF remote controls (Purchased separately)

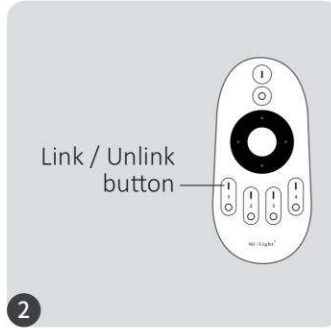


2.4G RF Remote control instruction

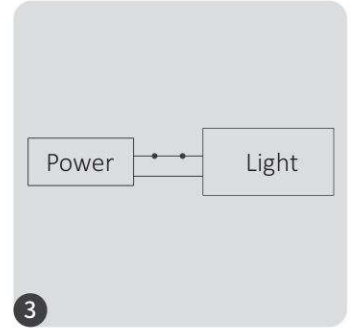
1). Linking Code Instructions



Power off 10 seconds and power on again or short press "SET" one time or turn on light via PUSH switch



Short press " | " button 3 times within 3 seconds.

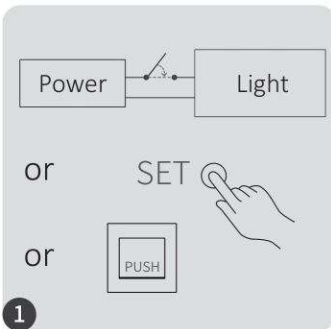


Lights blink 3 times slowly means linking is done successfully.



Linking failed if light is not blinking slowly, Please follow above steps again. (Note: Light that have linked can't link again)

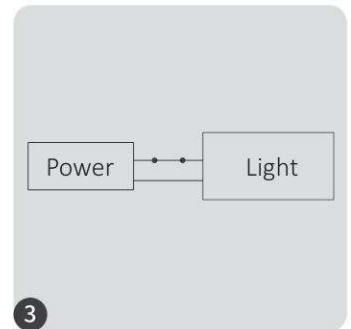
2). Unlinking Code Instructions



Power off 10 seconds and power on again or short press "SET" one time or turn on light via PUSH switch



Short press " | " button 5 times within 3 seconds.



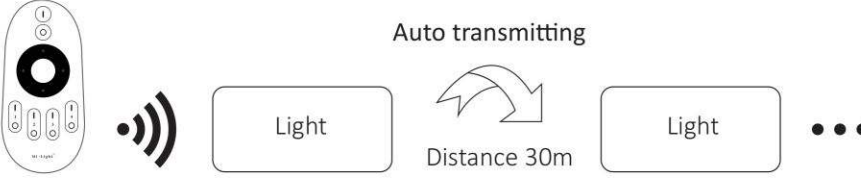
Lights blink 10 times quickly means unlinking is done successfully.



Unlinking failed if light is not blinking quickly, Please follow above steps again. (Note: Light haven't linked that don't need to unlink)

3). Auto transmitting (2.4G RF remote signal)

The light can transmit remote signal to another light automatically while the distance between lights are 30m, the remote control distance is unlimited.
(Attention: all lights must be linked with same remote)



4). PWM high frequency / low frequency switching (only for remote control)

Switch to high frequency (16KHz):

Press “OFF” button 1 time within three seconds and press “ON” button 5 times, Activated successfully once led light flashes 2 times quickly.

Switch to low frequency (250Hz):

Press “ON” button 1 time within three seconds and press “OFF” button 5 times, Activated successfully once led light flashes 2 times slowly.

5). “Do Not Disturb” mode is activated and shut down (default activated)

Turn on “Do Not Disturb” mode (wide using in the area which have power failure frequently to save energy)

2.4G RF Remote turn on and turn off instruction

Turn on “Do Not Disturb” mode:

Press “OFF” button three times within three seconds and press “ON” button three times, Activated successfully once led light flashes four times quickly.

Attention: Do not disturb mode is activated

1. When the light is OFF status (For example: Use app or remote to turn off light)

The light is OFF status once you turn off power and turn on again.

(User must turn off and turn on power twice times to activate light or use APP / remote to activate light)

2. When the light is ON status

The light is ON status once you turn off and turn on power one time.

Turn off “Do Not Disturb” mode:

Press “ON” button three times within three seconds and press “OFF” button three times, closed successfully once led light flashes four times slowly.

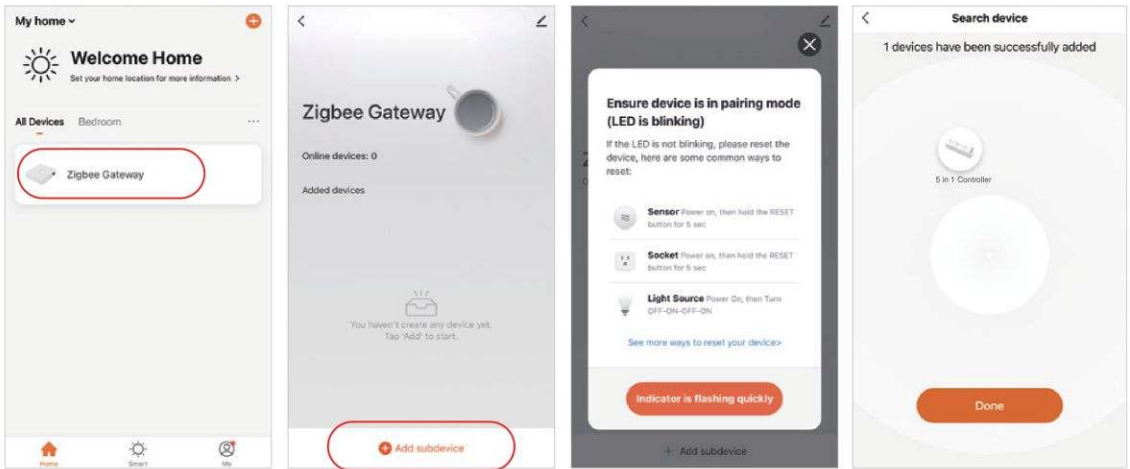
Attention: The light will be always “ON” status if you turn on and turn off power once user closed “Do Not Disturb” mode.

App turn on and off “Do Not Disturb” mode instruction ([check details in page 6](#))

Smartphone APP control instruction

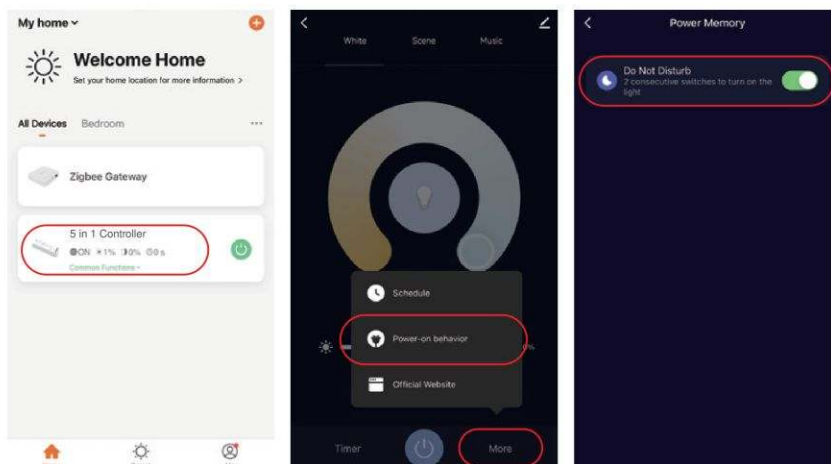
Added Zigbee 3.0 gateway into “Tuya Smart” App (please review instruction of Zigbee 3.0 gateway)

- 1). Connect with power supply.
- 2). Pairing network (**attention: factory default is pairing network**).
Way one: Turn off and turn on light 3 times or over 3 times continuously, the light is in breathing status.
Way two: Long press " SET " key until indicator light flashing.
- 3). Open “Tuya Smart” APP to click Zigbee gateway, then click “Add sub device”.
- 4). Click “Indicator is flashing quickly”.
- 5). Support APP dimming or group control and etc once added successfully.



App turn on and off “Do Not Disturb” mode (default activated)

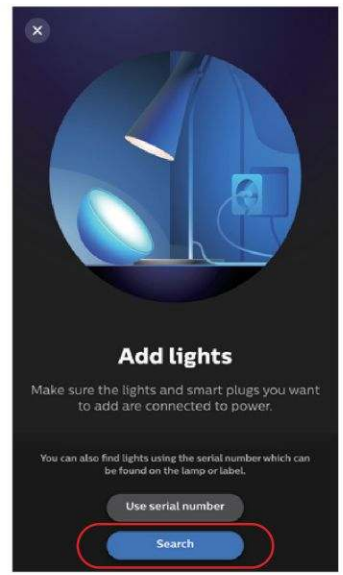
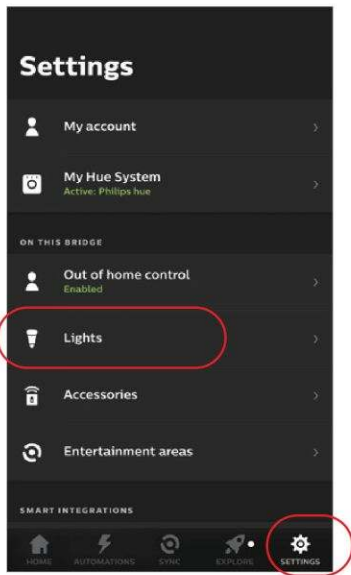
Click the light which need to be set up or group control --- click “More” --- click “Power-on behavior” --- turn on or off



Philips Hue control instruction

Added “Philips Hue” into APP

- 1). Connect with power supply
- 2). Pairing network (**attention: factory default is pairing network**)
 - Way one:** Turn off and turn on light 3 times or over 3 times continuously, the light is in breathing status.
 - Way two:** Long press " SET " key until indicator light flashing.
- 3). Open “Philips Hue” App to click “SETTINGS” and click “Lights”
- 4). Click “+” on the top of right corner
- 5). Click “Search”
- 6). Click “Start configuration”, Follow the app instruction to complete configuration



Alexa voice control instruction

1). Alexa control (Audio support Zigbee 3.0 protocol)

You can connect directly if your Amazon ECHO already is built-in zigbee 3.0 protocol, following model with zigbee 3.0 protocol:

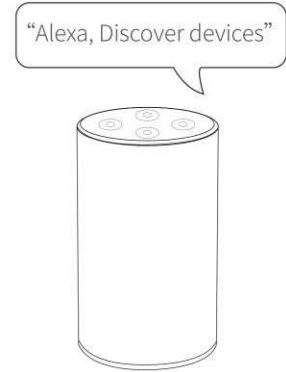
Amazon ECHO Plus (2nd Gen), ECHO (4th Gen), ECHO Studio, ECHO Show (2. Gen)

- 1). Connect with power supply
- 2). Pairing network (**attention: factory default is pairing network**)

Way one: Turn off and turn on light 3 times or over 3 times continuously, the light is in breathing status.

Way two: Long press " SET " key until indicator light flashing.

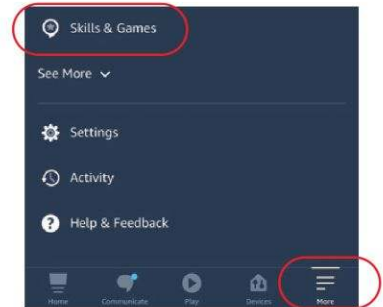
- 3). Say to Amazon ECHO "Alexa, Discover devices"
Wait for a while to discover device, Voice control is activated



2). Alexa control (Audio don't support Zigbee 3.0 protocol)

Please add device into Miboxer Zigbee 3.0 gateway if your Alexa don't support zigbee 3.0 protocol ([check details in page 6](#)), then start following steps

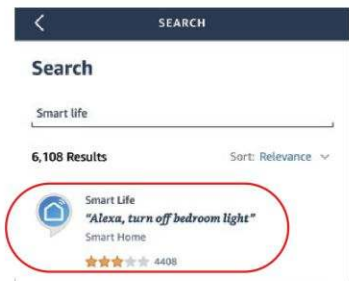
- 1). Open Alexa App
- 2). Click "More" on the bottom of right corner
- 3). Click "Skills & Games"



- 4). Click "Q" on the top of right corner
- 5). Type into "Smart life" and search



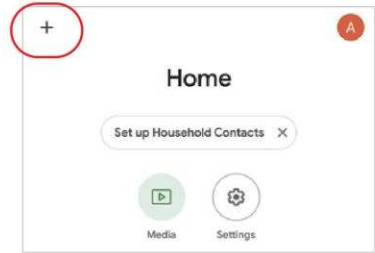
- 6). Click "Smart Life" skill, follow instruction to finish configuration and start voice control



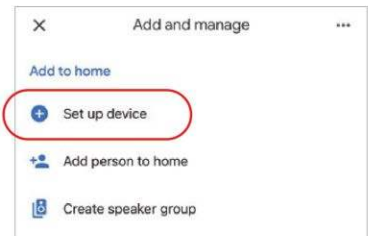
Google Home voice control instruction

Please add device into MiBoxer Zigbee 3.0 gateway ([check details in page 6](#)) and start following steps

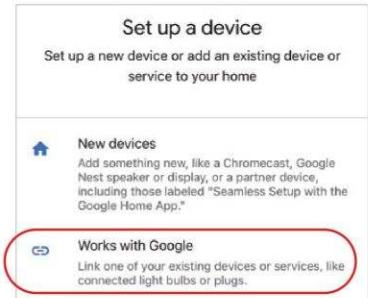
- 1). Open Google Home App
- 2). Click “+” on the top of left corner



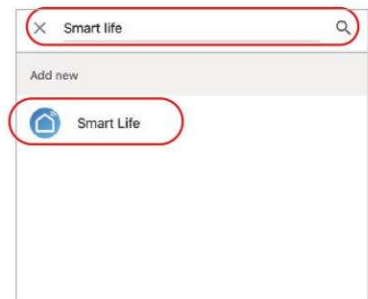
- 3). Click “Set up device”



- 4). Click “Works with Google”



- 5). Click “Q” on the top of right corner
- 6). Type into “Smart life” and search
- 7). Click “Smart Life” skill, follow instruction to finish configuration and start voice control



Attention

1. Please turn off power supply before installation.
2. Please ensure input voltage to be same as requirements from device.
3. Don't disassemble device if you are not expert, otherwise it will damage it.
4. Please do not use the light in the place with widely range metal area or strong electromagnetic wave nearby, otherwise, the remote distance will be seriously affected.



Scan QR code to watch Zigbee series video instruction Or enter into following link directly

<https://miboxer.com/light/video/zigbee.html>



Made in China