


The NUX '63 Diamond Overdrive pedal from the Reissue Series presents another take on the amp-in-a-box concept, this time delivering iconic British invasion tones along with the beloved high-frequency boost.

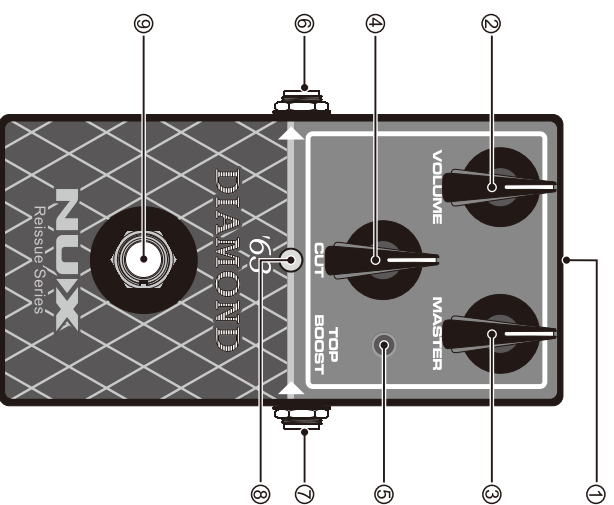
Overview

- Iconic British invasion tone from the golden age of rock
- Top Boost toggle
- Classic knobs and panel design
- Analog circuit with true-bypass foot switch

Specifications

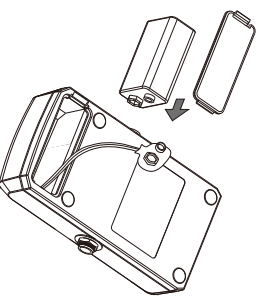
- Input impedance: 1M Ohms
- Output impedance: 1k Ohms
- Power: 9V battery or external AC adaptor delivering 9V DC regulated minimum 300mA ()
- Dimensions: 121(L) x 77(W) x 48(D) mm
- Weight: 230g

Product Interface



- 1. POWER Jack**
Use a regular 9V DC adaptor with Negative Tip to power this pedal. It's highly recommended using the optional NUX ACD-006A adaptor. Using an incompatible adaptor may cause noise or malfunction.
- 2. VOLUME Knob**
Sets gain level of this pedal.
- 3. MASTER Knob**
Sets the output level of this pedal.
- 4. CUT Knob**
Sets the high-frequency of this pedal.
- 5. TOP BOOST TOGGLE**
Engage the high-frequency boost.
- 6. OUTPUT Jack**
Connect an amplifier into this jack.
- 7. INPUT Jack**
Connect your guitar into this jack. Plugging in this jack switch on the power whether the effect is engaged or disengaged. When not using this pedal, disconnect the cable from this jack to save battery life.
- 8. LED Indicator**
Display pedal working status.
- 9. Footswitch**
Engage / Disengage the effect.

Installing The Battery



A battery is supplied with the unit. Connect the snap cord to the battery and insert the battery as shown in the drawing. When the battery runs down the sound will change. In such case please replace with new battery. The power comes on when you insert the plug into the INPUT jack. The use of an AC adaptor is recommended as the unit's power consumption is relatively high.

Accessories

- 9V battery
- Owner's manual
- NUX sticker

WARNING-IMPORTANT SAFETY INSTRUCTIONS BEFORE CONNECTING, READ INSTRUCTIONS

<p>WARNING: To reduce the risk of fire or electric shock, do not expose this appliance to rain or moisture.</p>	<p>CAUTION: To reduce the risk of fire or electric shock, do not remove screws. No user-serviceable parts inside. Refer servicing to qualified service personnel.</p>
<p>The lightning symbol within a triangle means "electrical caution!" It indicates the presence of information about operating voltage and potential risks of electrical shock.</p>	<p>The exclamation point within a triangle means "caution!" Please read the information next to all caution signs.</p>

* The appearance design is our proprietary creation or validly licensed, and is not affiliated with any other brand. Any similarity to third-party brands is unintentional and shall not be construed as an association.

* All of the brand and model names mentioned on this page are Trademarks of their respective owners, which are in no way associated or affiliated with NUX Effects and Cherub Technology CO. LTD.



www.nuxaudio.com
Made in China

Follow all instructions and heed all warnings
KEEP THESE INSTRUCTIONS!

1. Do not place near heat sources, such as radiators, heat registers, or appliances which produce heat.
2. Guard against objects or liquids entering the enclosure.
3. Refer all servicing to qualified service personnel.
4. Prolonged listening at high volume levels may cause irreparable hearing loss and/or damage. Always be sure to practice "safe listening".