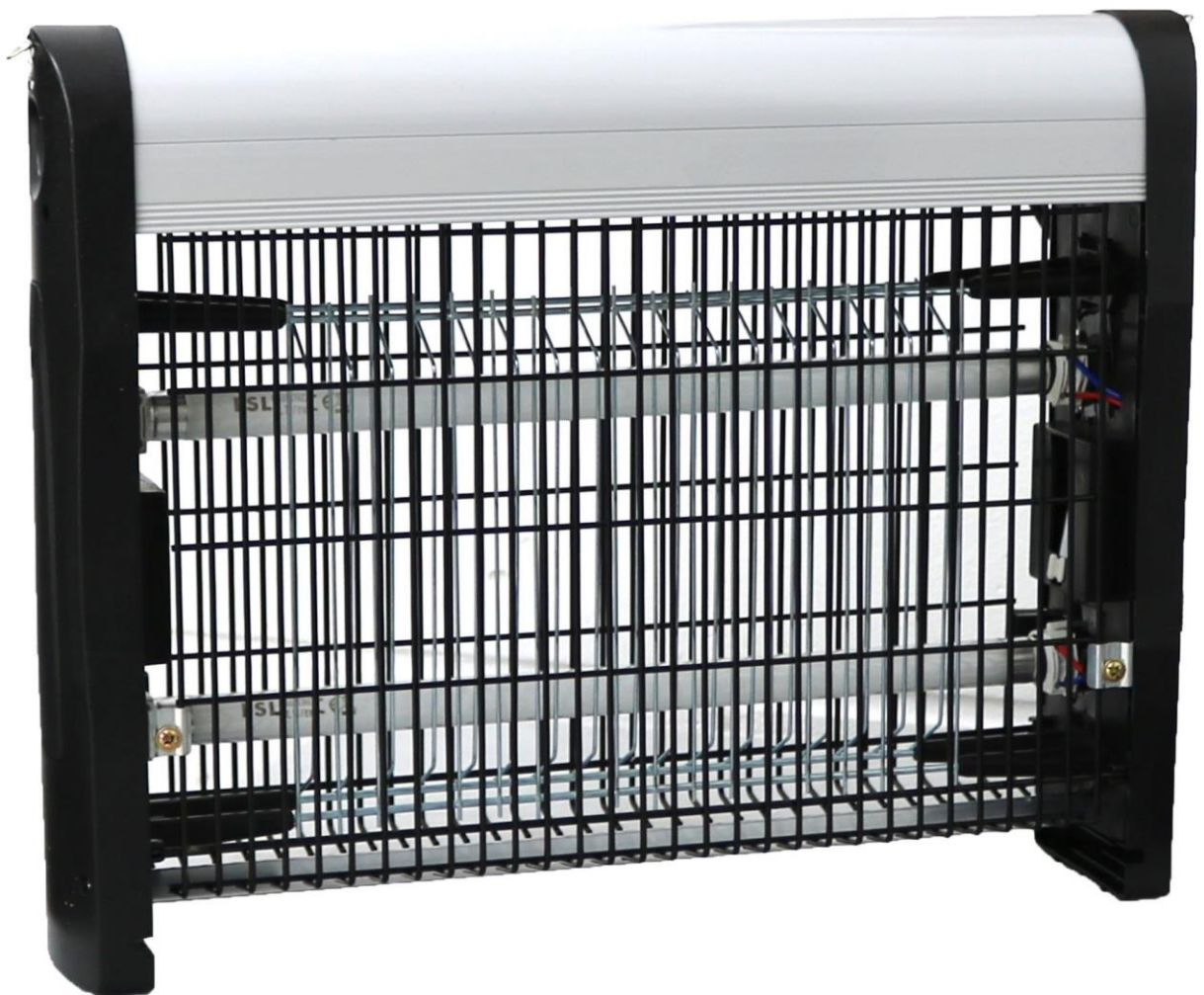


OYPLATM GARDEN



16W Electric Bug Zapper

Safety Instructions

Notice: Ensure you read and fully understand instructions before use

While every attempt is made to ensure the highest degree of protection in all equipment, we cannot guarantee freedom from injury. The user assumes all risk of injury due to use. All merchandise is sold on this condition, which no representative of the company can waive or change.

- This product is not a toy, and is only to be used for its designated purpose.
- Never carry out any alterations or modifications to this product.
- This product is intended for outdoor use only. Make sure that the product is shielded from rain and snow to avoid damaging the product.
- Do not remove the metal grating and touch/tamper with the electrical components whilst the product is on as this will cause injuries and burns.
- Ensure the power supply to the socket into which the appliance is plugged, is in accordance with the rating label on the appliance and that the socket is earthed.
- To protect against electrical shock, do not immerse cord, plug or any part of this appliance in water or any other liquid.
- It is normal to hear a cracking or zapping sound when insects touch the electrified net.
- Install the unit six to eight feet above the ground to avoid contact by children and pets.
- Once the power supply is switched 'ON' you should see the tube emitting purple light. This indicates the product is in operation.
- This appliance is not intended for use by persons (including children) with reduced physical, sensory or mental capabilities or lack of experience or knowledge, unless they have been given supervision or instruction concerning the use of the appliance by a person responsible for their safety.
- Clean only with a damp cloth. Do not use strong industrial cleaning substances or abrasive materials as these will damage the product. Make sure the product is off, unplugged from the socket and been left for five minutes to remove the risk of electrical shock.
- If the product is damaged or has any defects, please contact cservice@oypla.com

HAVE A QUESTION ABOUT YOUR PURCHASE?

OUR DEDICATED CUSTOMER SERVICES TEAM ARE HAPPY TO HELP
CONTACT THEM VIA:

TELEPHONE: 020 3600 2255

EMAIL: cservice@oypla.com

LIVE CHAT: www.oypla.com

PLEASE RETAIN A COPY OF THESE INSTRUCTIONS FOR FUTURE CONSULTATION



Environmental Protection



OYPLA.COM

An Official OYPLA Branded Product

Products bearing the symbol shown below means that used electrical and electronic equipment (WEEE) should not be mixed with general household waste. For proper treatment, recovery and recycling, please take this product(s) to designated collection points where it will be accepted free of charge. Disposing of this product correctly will help save valuable resources and prevent any potential negative effects on human health and the environment, which could otherwise arise from inappropriate waste handling. Please contact your local authority for further details of your nearest designated collection point. Penalties may be applicable for incorrect disposal of this waste, in accordance with your national legislation.

Imported by Oypla.com LLP, Uxbridge, UB8 2FX

USER MANUAL Model No: 4013