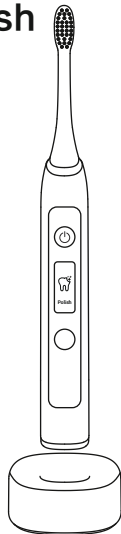




Always Wear Your Smile

Smart HD Display Sonic ToothBrush

Model:1741F



User Manual

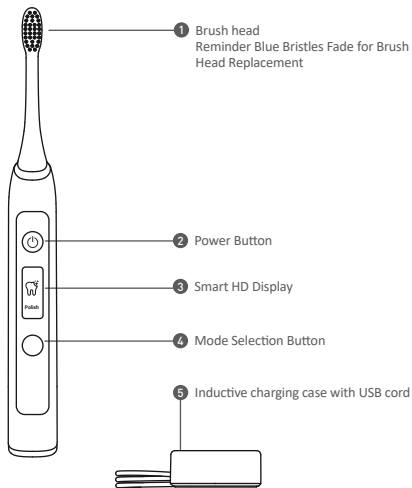
SAFEGUARDS AND WARNINGS

- **WARNING!** Not suitable for children under 36 months due to small parts. Choking hazard. Keep the appliance, charging base and its cable out of reach of children.
- This appliance should only be used by children old enough to understand the instructions concerning the use of the appliance and its hazards or under direct adult supervision.
- Cleaning and maintenance of the device shall not be completed by children under the age of 10 and requires direct adult supervision.
- When undergoing treatment of any oral condition consult your dental professional prior to use. Replace brush head every 3 months or sooner if the bristles show signs of significant wear or damage.
- Do not use any brush heads other than what is recommended by the manufacturer.
- If damaged, discontinue use. Do not attempt to repair/modify.
- Use only for intended use.
- Do not store or charge Brush link Pro" over water or heat.
- Keep away from strong magnetic fields as it could lead to malfunctions or damage.
- Do not charge the appliance on a metal desktop.

Caution

- Do not clean the brush head, handle and charging base in the dishwasher.
- Do not use the toothbrush in the bath or shower.
- If you had oral or gum surgery in the previous 2 months, consult your dentist before using it.
- If you have medical concerns, consult your doctor before you use the appliance.
- The appliance complies with the safety standard for electromagnetic devices. If you have a pacemaker or other implanted device, consult your doctor before use.
- This appliance has only been designed for cleaning teeth, gums and tongue. Do not use it for any other purpose.
- The toothbrush is a personal care device, suggest to use for use on multiple patients in a dental practice or institution.
- Stop using a brush head with crushed or bent bristles. Replace the brush head every 3 months or sooner if signs of Bristles Fade appear.
- Do not use other brush heads instead of the ones recommended by the manufacturer.
- Supervise children while they are brushing until they have established good brushing habits.

Product Components



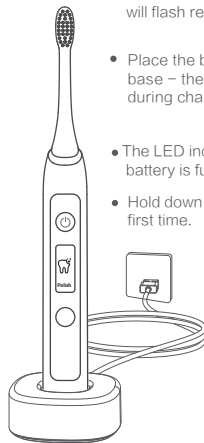
Smart Sonic Toothbrush

Model No	1741F
Waterproof	IPX7
Function Operation	Button Press
Outlook	Main Body Material: PC+ABS+UV Painting
Product Size	Main Device : 27.8*27.8*248.6mm Charging Base: 65.6*65.6*26.3mm
Product Weight	Main Body About 115g Charging Base:100g
Color	Black, White
Charging Type	Wireless Charger
Charging Time	About 8 Hours
Battery	Lithium Rechargeable Battery
Capacity	800mah
Battery Life	About 1 Month (If Use 4 Minutes Everyday)
Brush Modes	5 Different Modes, Each Mode Will Be Lighted Up When Relevant Mode Function Is On Clean Mode: 34800 Brush Strokes Per Minute White Mode: 33000-40000 Brush Strokes Per Minute Polish Mode: 35000 Brush Strokes Per Minute Soft Mode: 33000 Brush Strokes Per Minute Sensitive Mode: 28200 Brush Strokes Per Minute
Package Contents	2 Brush Head 1 Handle With Ergonomic Shape 1 Wireless Charger 1 User Manual 1 Gift Box

Battery Charging

- For ultimate performance, charge your sonic toothbrush battery for a full 12 hours, before initial use.

- When the battery is low, the device will vibrate 4 times and the LED indicator will flash red.
- Place the brush handle on the charging base – the LED indicator will flash white during charging.
- The LED indicator light in white color when battery is fully charged.
- Hold down to activate the battery for the first time.



Attention:

Do not charge your sonic toothbrush via computer USB port. After the initial 12 hour battery charge, please ensure subsequent charging time is 8 hours for optimal battery life.

Functions of Smart Toothbrush

Clean 34800 times/minute

Effectively remove dirt and keep the mouth clean

White 33000-40000 times/minute

Removes surface stains like tea stains, coffee stains

Polish 35000 times/minute

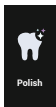
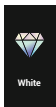
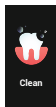
Deep cleaning of oral cavity

Soft 33000 times/minute

Gentle customization for the oral health

Sensitive 28200 times/minute

Specially tailored for sensitive teeth—gentle care of the teeth



Instruction for Use



01

Put brush head into toothbrush body and make a certain gap between head and body



02

Take some toothpaste on the wet bristle



03

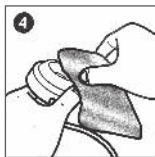
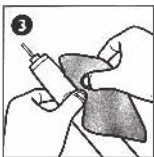
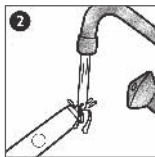
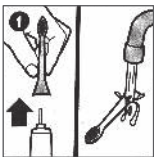
Smudge the toothpaste to teeth before use (Notice: launch toothbrush after put into mouth)



04

Change the cleaning area based on briefly pause during the brushing cycle (Notice: no need to left and right or upper and down to move after launched)

Cleaning Your Smart Toothbrush

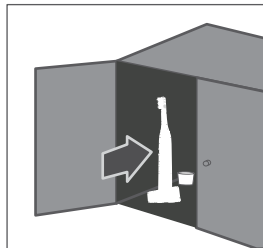


Keep your sonic toothbrush clean by rinsing it down and wiping it with a clean, damp cloth.

A mild soap can be used if needed.

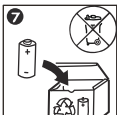
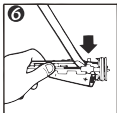
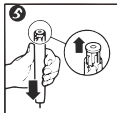
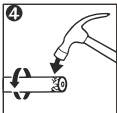
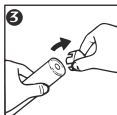
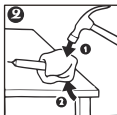
Do not place your toothbrush, or any of its components, in the dishwasher.

Storing Your Smart toothbrush



Storing– If you are not going to use it for an extended period of time, unplug the charging base, clean all parts and store them in a cool, dry place away from direct sunlight.

Environment



Do not throw away the appliance with the normal household waste at the end of life, but hand it in at an official collection point for recycling.

By doing this, you help to preserve the environment. The built-in rechargeable battery contains substances that may pollute the environment. Always remove the battery before you discard and hand in the appliance at an official collection point. Removing the rechargeable battery. This process is not reversible.

To remove the recharge battery, you need a flat-head (standard) screwdriver. Observe basic safety precautions when you follow the procedure above. Be sure to protect your eyes, hands, fingers and the surface on which you work.

Guarantee Restrictions

The terms of the international guarantee do not cover the following:

- Brush head.
- Damage caused by misuse, abuse, neglect, alterations to unauthorized repair.
- Normal wear and tear, including chips, scratches, abrasions, discoloration or fading

FCC Warning

This device complies with part 15 of the FCC Rules. Operation is subject to the following two conditions: (1) This device may not cause harmful interference, and (2) this device must accept any interference received, including interference that may cause undesired operation.

Any changes or modifications not expressly approved by the party responsible for compliance could void the user's authority to operate the equipment.

This equipment has been tested and found to comply with the limits for a Class B digital device, pursuant to part 15 of the FCC Rules. These limits are designed to provide reasonable protection against

harmful interference in a residential installation. This equipment generates uses and can radiate radio frequency energy and, if not installed and used in accordance with the instructions, may cause harmful interference to radio communications. However, there is no guarantee that interference will not occur in a particular installation. If this equipment does cause harmful interference to radio or television reception, which can be determined by turning the equipment off and on, the user is encouraged to try to correct the interference by one or more of the following measures:

- Reorient or relocate the receiving antenna.
- Increase the separation between the equipment and receiver.
- Connect the equipment into an outlet on a circuit different from

that to which the receiver is connected.

-- Consult the dealer or an experienced radio/TV technician for help.

FCC RF exposure statement:

The equipment complies with FCC radiation exposure limits set forth for an uncontrolled environment. This equipment should be installed and operated with minimum distance between 20cm the radiator or your body.