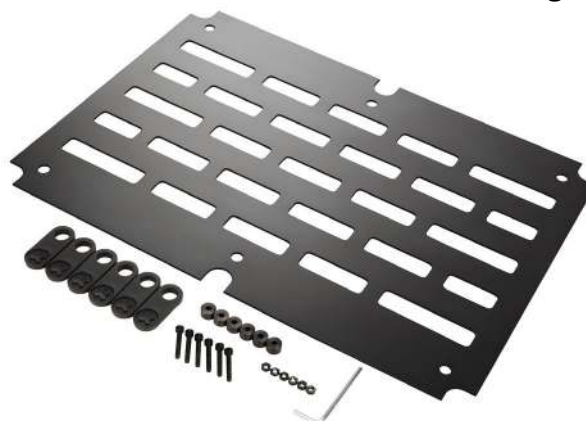




Installation Manual for RockBoard® Base Plate Base plate for RockBoard® pedalboards English

Thank you for choosing a RockBoard® Base Plate. This Base Plate is an optional base plate and a versatile, clean mounting solution for the RockBoard® pedalboards. Thanks to the practical twist locks, the Base Plate can be conveniently and easily mounted under the pedalboard quickly with no additional drill holes required. The Base Plate can be opened and fixed again with the six twist locks at any time without requiring any tools.



Mounting

Step 1



Turn the RockBoard® pedalboard upside down.

Step 2



Remove all feet and individual nuts with included allen key. Do not throw away.

Step 3



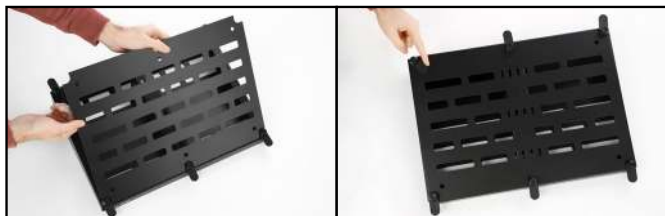
Mount one twist lock on each of the rubber feet in the order shown.

Step 4



Reattach all rubber feet to your RockBoard® pedalboard using the wrench and the Allen key and then turn the fasteners outward, as shown.

Step 5



Place the RockBoard® Base Plate in the corresponding openings of the rubber feet. Then rotate the latches inward to securely lock the Base Plate into place.

Step 6



Your RockBoard® is now ready to use! The Base Plate can be opened and closed at any time by simply turning the latches.

Note: The manufacturer reserves the right to change these specifications without notice.