



# PREMASGARD® 211x

## PREMASGARD® 212x / 212x-SD

### D Bedienungs- und Montageanleitung

Druck- und Differenzdruckmessumformer,  
incl. Anschluss-Set, Kompaktform, einstellbar, kalibrierfähig,  
mit Mehrbereichsumschaltung und aktivem Ausgang

### GB Operating Instructions, Mounting & Installation

Pressure and differential pressure measuring transducers,  
including connection set, compact form, adjustable,  
calibratable, with multi-range switching and active output

### F Notice d'instruction

Convertisseur de pression et de pression différentielle,  
y compris kit de raccordement, forme compacte, réglable,  
étalonnable, avec commutation multi-gamme et sortie active

### RU Руководство по монтажу и обслуживанию

Преобразователь давления измерительный и преобразователь  
давления измерительный дифференциальный,  
вкл. комплект соединительных деталей, компактное  
исполнение, настраиваемый, калибруемый, с переключением  
между несколькими диапазонами и активным выходом

PREMASGARD® 211x



PREMASGARD® 212x



PREMASGARD® 212x-SD



S+S REGELTECHNIK GMBH  
THURN-UND-TAXIS-STR. 22  
90411 NÜRNBERG / GERMANY  
FON +49 (0) 911 / 519 47-0  
mail@SplusS.de  
www.SplusS.de



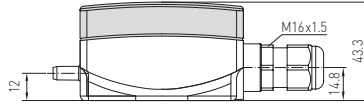
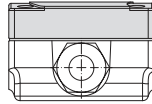
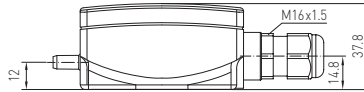
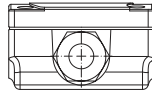
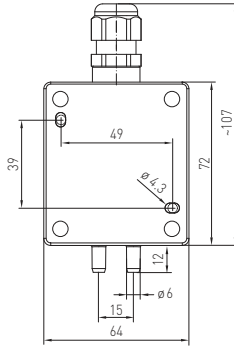
CARTONS  
ET EMBALLAGE  
PAPIER À TRIER

PREMASGARD® 211x  
PREMASGARD® 212x / 212x-SD



S+S REGELTECHNIK

Maßzeichnung  
Dimensional drawing  
Plan coté  
Габаритный чертёж



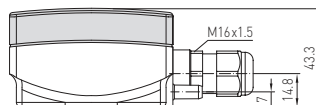
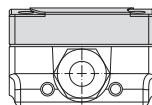
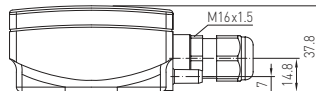
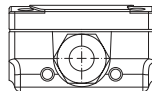
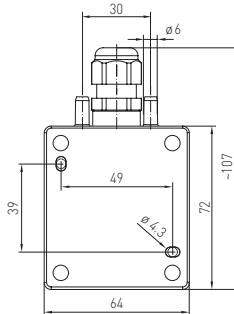
PREMASGARD® 211x



ohne Display  
without display  
sin écran  
без дисплея

mit Display  
with display  
avec écran  
с дисплеем

Maßzeichnung  
Dimensional drawing  
Plan coté  
Габаритный чертёж



PREMASGARD® 212x



ohne Display  
without display  
sin écran  
без дисплея

mit Display  
with display  
avec écran  
с дисплеем

Gerätevariante mit  
**M12-Steckverbinder**  
(optional auf Anfrage)  
Device version  
with **M12 connector**  
(optional on request)  
Variante d'appareil avec  
**connecteur M12**  
(en option et sur demande)  
Вариант устройства с  
**разъемом M12**  
(опционально по запросу)

The calibratable compact pressure sensors of the **PREMASGARD® 211x / 212x / 212x-SD** series are equipped with 8 switchable measuring ranges, 2 switchable output signals (16 devices in one) and with or without optional display and are used for measuring above-atmospheric, below-atmospheric, or differential pressures and Volume flow in air. The piezo-resistive measuring element is temperature-compensated and guarantees a high degree of reliability and accuracy. These pressure transmitters have a pushbutton for manual zero point calibration and an adjustable offset. Applications of these pressure sensors are in clean room, medical and filter technology, in ventilation and air conditioning ducts, in spray booths, in large-scale catering facilities, for monitoring filters, for level measurement or for triggering frequency converters. Media measured with these pressure transducers are air (non-precipitating), or other gaseous non-aggressive, non-combustible media. The differential pressure sensor is supplied including connection set **ASD-06** (2 m connection hose, two pressure connection nipples, screws). You can find further device types under **PREMASGARD® 111x / 112x / 112x-SD** (I variant with 2-wire connection).

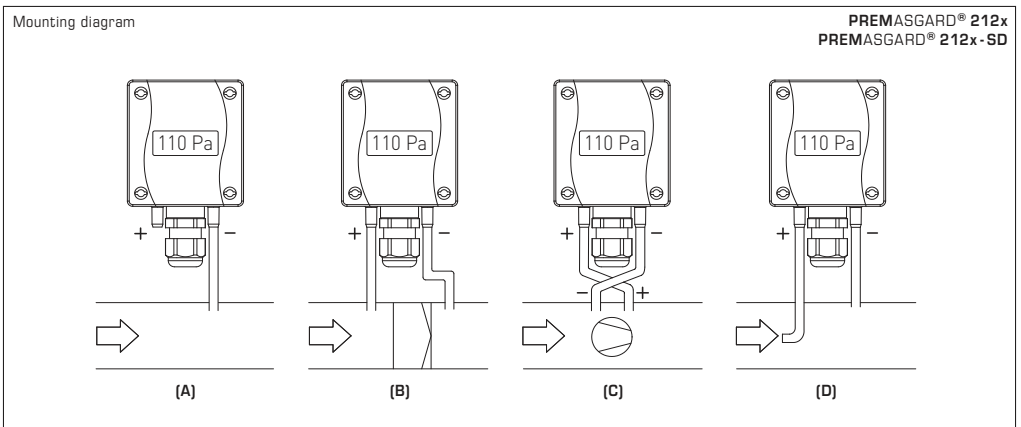
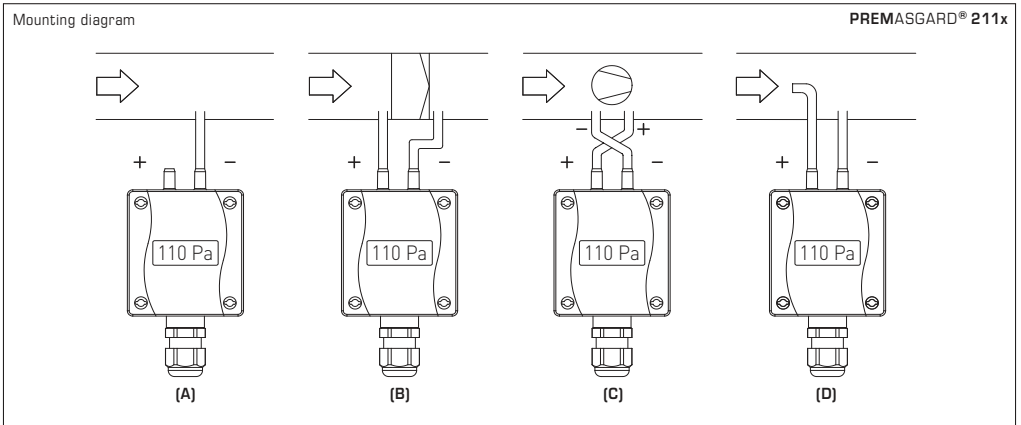
TECHNICAL DATA	
Power supply:	24V AC/DC (± 10%)
Working resistance:	$R_a$ (Ohm) = 25...450 Ohm for I variant
Load resistance:	$R_L > 25$ kOhm for U variant
Power consumption:	< 1 W at 24 V DC; < 2 VA at 24 V AC
Current consumption:	< 45 mA
Measuring function:	<b>Differential pressure, volume flow</b> (square root output signal)
Measuring ranges:	<b>multi-range switching with 8 switchable measuring ranges</b> (see table)
Output:	<b>switchable 0-10V / 4...20mA</b> (via DIP switches)
Electrical connection:	3-wire connection
Media temperature:	-20...+50 °C (temperature-compensated 0...+50 °C)
Pressure connection:	with connection nozzles for pressure hose Ø 6 mm
Type of pressure:	differential pressure
Medium:	clean air and other non-aggressive, non-combustible gases
Accuracy:	<b>Type 2110 / 2120 / 2120-SD</b> (100 Pa): typically ± 3 Pa at +25 °C <b>Type 2111 / 2121 / 2121-SD</b> (1000 Pa): typically ± 10 Pa at +25 °C <b>Type 2115 / 2125 / 2125-SD</b> (5000 Pa): typically ± 35 Pa at +25 °C compared to the calibrated reference device
Zero point offset:	± 10 % of final value
Above- / below-atmospheric pressure:	± 50 kPa
Long-term stability:	± 1 % per year
Signal filtering:	<b>switchable 1 s / 10 s</b> (via DIP switches)
Hysteresis:	0.3 % of final value
Media contacting parts:	Brass, Ni, Duroplast, Si, epoxy, RTV, BSG, UV silicone gel
Temperature drift values:	± 0.1 % of final value / °C
Linearity:	< ± 1 % of final value
Housing:	plastic, UV-resistant, material polyamide, 30 % glass-globe reinforced, colour traffic white (similar to RAL 9016), housing cover for display is transparent! <b>Type 211x / 212x:</b> with quick-locking screws (slotted/Phillips head combination) <b>Type 212x-SD:</b> with snap-on lid
Housing dimensions:	72 x 64 x 37.8 mm (Tyr 1 / Tyr 01 without display) 72 x 64 x 43.3 mm (Tyr 1 / Tyr 01 with display)
Cable connection:	<b>cable gland</b> , plastic (M 16 x 1.5; with strain relief, exchangeable, max. inner diameter 10.4 mm) or <b>M12 connector</b> according to DIN EN 61076-2-101 (optional on request)
Electrical connection:	0.14 - 1.5 mm <sup>2</sup> , via terminal screws
Humidity:	< 95 % r. H., non-precipitating air
Protection class:	III (according to EN 60730)
Protection type:	<b>Type 211x / 212x:</b> <b>IP 67</b> (according to EN 60529)* Housing tested, TÜV SÜD, Report No. 713139052 (Tyr 1) <b>Type 212x-SD:</b> <b>IP 54</b> (according to EN 60529)* Housing tested, TÜV SÜD, Report No. 713160960A (Tyr 01) * Housing in the built-in state
Standards:	CE conformity, electromagnetic compatibility according to EN 61326, EMC directive 2014 / 30 / EU
Features:	two-line <b>display with illumination</b> , cutout approx. 36 x 15 mm (W x H), to display ACTUAL pressure
<b>ACCESSORIES</b>	see table

PREMASGARD® 212x-SD				
Pressure, differential pressure and volume flow measuring transducers, <i>Standard</i> (Pressure connectors on the bottom side)				
Pressure range (Ranges adjustable)	Type/WG01B (3-wire connection)	Output (switchable)	Display	Item No. (with snap-on lid)
<b>max. - 1000...+ 1000 Pa</b>	<b>PREMASGARD® 2121-SD</b>			<b>IP 54</b>
0... 100 Pa / - 100...+ 100 Pa	PREMASGARD 2121-SD	0-10V / 4...20mA		1301-11B7-0010-000
0... 300 Pa / - 300...+ 300 Pa	PREMASGARD 2121-SD LCD	0-10V / 4...20mA	■	1301-11B7-2010-000
0... 500 Pa / - 500...+ 500 Pa				
0... 1000 Pa / -1000...+1000 Pa				
<b>max. - 5000...+ 5000 Pa</b>	<b>PREMASGARD® 2125-SD</b>			<b>IP 54</b>
0...1000 Pa / -1000...+ 1000 Pa	PREMASGARD 2125-SD	0-10V / 4...20mA		1301-11B7-0050-000
0...2000 Pa / -2000...+2000 Pa	PREMASGARD 2125-SD LCD	0-10V / 4...20mA	■	1301-11B7-2050-000
0...3000 Pa / -3000...+3000 Pa				
0...5000 Pa / -5000...+5000 Pa				
<b>max. - 100...+ 100 Pa</b>	<b>PREMASGARD® 2120-SD</b>			<b>IP 54</b>
0... 50 Pa / - 50...+ 50 Pa	PREMASGARD 2120-SD	0-10V / 4...20mA		1301-11B7-0110-000
0... 100 Pa / - 100...+ 100 Pa	PREMASGARD 2120-SD LCD	0-10V / 4...20mA	■	1301-11B7-2110-000

PREMASGARD® 212x				
Pressure, differential pressure and volume flow measuring transducers, <i>Premium</i> (Pressure connectors on the bottom side)				
Pressure range (Ranges adjustable)	Type/WG01 (3-wire connection)	Output (switchable)	Display	Item No. (with quick-locking screws)
<b>max. - 1000...+ 1000 Pa</b>	<b>PREMASGARD® 2121</b>			<b>IP 67</b>
0... 100 Pa / - 100...+ 100 Pa	PREMASGARD 2121	0-10V / 4...20mA		1301-11A7-0010-000
0... 300 Pa / - 300...+ 300 Pa	PREMASGARD 2121 LCD	0-10V / 4...20mA	■	1301-11A7-2010-000
0... 500 Pa / - 500...+ 500 Pa				
0... 1000 Pa / -1000...+1000 Pa				
<b>max. - 5000...+ 5000 Pa</b>	<b>PREMASGARD® 2125</b>			<b>IP 67</b>
0...1000 Pa / -1000...+ 1000 Pa	PREMASGARD 2125	0-10V / 4...20mA		1301-11A7-0050-000
0...2000 Pa / -2000...+2000 Pa	PREMASGARD 2125 LCD	0-10V / 4...20mA	■	1301-11A7-2050-000
0...3000 Pa / -3000...+3000 Pa				
0...5000 Pa / -5000...+5000 Pa				
<b>max. - 100...+ 100 Pa</b>	<b>PREMASGARD® 2120</b>			<b>IP 67</b>
0... 50 Pa / - 50...+ 50 Pa	PREMASGARD 2120	0-10V / 4...20mA		1301-11A7-0110-000
0... 100 Pa / - 100...+ 100 Pa	PREMASGARD 2120 LCD	0-10V / 4...20mA	■	1301-11A7-2110-000

PREMASGARD® 211x				
Pressure, differential pressure and volume flow measuring transducers, <i>Premium</i> (Pressure connectors on the top side)				
Pressure range (Ranges adjustable)	Type/WG01 (3-wire connection)	Output (switchable)	Display	Item No. (with quick-locking screws)
<b>max. - 1000...+ 1000 Pa</b>	<b>PREMASGARD® 2111</b>			<b>IP 67</b>
0... 100 Pa / - 100...+ 100 Pa	PREMASGARD 2111	0-10V / 4...20mA		1301-1197-0010-000
0... 300 Pa / - 300...+ 300 Pa	PREMASGARD 2111 LCD	0-10V / 4...20mA	■	1301-1197-2010-000
0... 500 Pa / - 500...+ 500 Pa				
0... 1000 Pa / -1000...+1000 Pa				
<b>max. - 5000...+ 5000 Pa</b>	<b>PREMASGARD® 2115</b>			<b>IP 67</b>
0...1000 Pa / -1000...+ 1000 Pa	PREMASGARD 2115	0-10V / 4...20mA		1301-1197-0050-000
0...2000 Pa / -2000...+2000 Pa	PREMASGARD 2115 LCD	0-10V / 4...20mA	■	1301-1197-2050-000
0...3000 Pa / -3000...+3000 Pa				
0...5000 Pa / -5000...+5000 Pa				
<b>max. - 100...+ 100 Pa</b>	<b>PREMASGARD® 2110</b>			<b>IP 67</b>
0... 50 Pa / - 50...+ 50 Pa	PREMASGARD 2110	0-10V / 4...20mA		1301-1197-0110-000
0... 100 Pa / - 100...+ 100 Pa	PREMASGARD 2110 LCD	0-10V / 4...20mA	■	1301-1197-2110-000
Multi-range switching:	The <b>pressure ranges</b> depend on the device type and can be set via DIP switches.			
Output:	<b>0-10V or 4...20mA</b> (selectable via DIP switches)			
Optional:	Cable connection with <b>M12 connector</b> according to DIN EN 61076-2-101 (on request)			

ACCESSORIES			Item No.
<b>ASD-06</b>	Connection set (included in the scope of delivery), consisting of 2 connection nipples (straight) made of ABS, 2 m PVC hose (soft, UV-resistant) and 4 screws		7100-0060-3000-000
<b>ASD-07</b>	2 connection nipples (at 90 degree angle) made of plastic, ABS		7100-0060-7000-000
<b>DAL-01</b>	Pressure outlet for ceiling or in-wall installation (e.g. in clean rooms)		7300-0060-3000-001
<b>WS-04</b>	Weather and sun protection hood, 130x180x135 mm, stainless steel V2A (1.4301)		7100-0040-7000-000



**TYPES OF MONITORING:**

Pressure connections at the pressure switch are marked with P1 (+) for higher pressure and P2 (-) for lower pressure.

**(A) Below-atmospheric pressure**

P1 (+) is not connected, but open to the atmosphere  
P2 (-) connected to inside of duct

**(B) Filter**

P1 (+) connected upstream of filter  
P2 (-) connected downstream of filter

**(C) Ventilator**

P1 (+) connected downstream of ventilator  
P2 (-) connected upstream of ventilator

**(D) Volume flow**

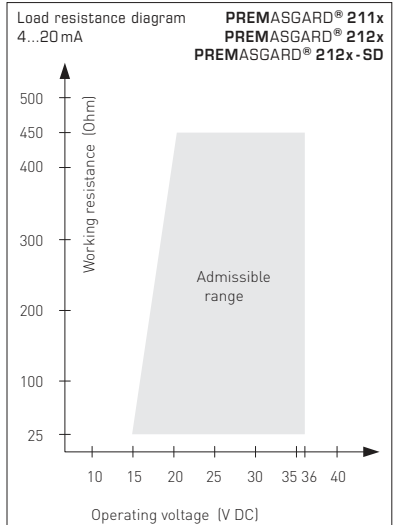
P1 (+) dynamic pressure, connected in flow direction  
P2 (-) static pressure, connected free of dynamic pressure components

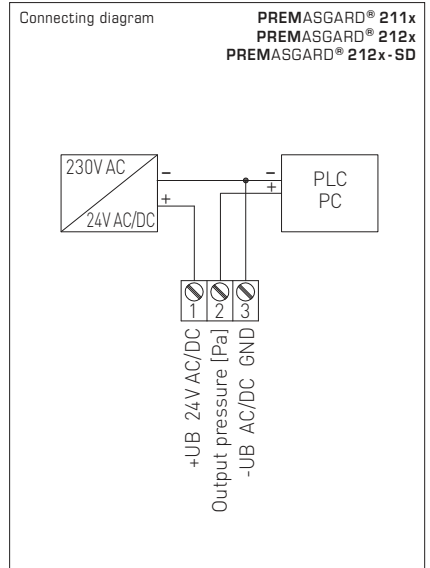
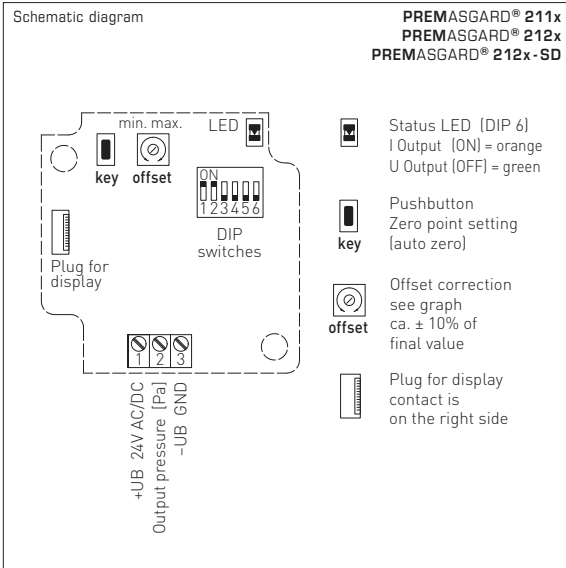
$$V = k \cdot \sqrt{\Delta p}$$

V = Volume flow

k = K factor

$\Delta p$  = Differential pressure (Pa)





Conversion table for pressure values:

Unit =	bar	mbar	Pa	kPa	mH <sub>2</sub> O
1 Pa	0.00001 bar	0.01 mbar	1 Pa	0.001 kPa	0.000101971 mH <sub>2</sub> O
1 kPa	0.01 bar	10 mbar	1000 Pa	1 kPa	0.101971 mH <sub>2</sub> O
1 bar	1 bar	1000 mbar	100000 Pa	100 kPa	10.1971 mH <sub>2</sub> O
1 mbar	0.001 bar	1 mbar	100 Pa	0.1 kPa	0.0101971 mH <sub>2</sub> O
1 mH <sub>2</sub> O	0.0980665 bar	98.0665 mbar	9806.65 Pa	9.80665 kPa	1 mH <sub>2</sub> O

DIP switches for pressure range setting, output attenuation and zero compensation:

Pressure range (selectable) – max. measuring range (default) is depending to the type of device	DIP 1	DIP 2
0...50 Pa    0...100 Pa    0...1000 Pa    -50...+50 Pa    -100...+100 Pa    -1000...+1000 Pa	OFF	OFF
-    0...300 Pa    0...2000 Pa    -    -300...+300 Pa    -2000...+2000 Pa	ON	OFF
-    0...500 Pa    0...3000 Pa    -    -500...+500 Pa    -3000...+3000 Pa	OFF	ON
0...100 Pa    0...1000 Pa    0...5000 Pa    -100...+100 Pa    -1000...+1000 Pa    -5000...+5000 Pa	ON	ON

Output characteristic line (Mode selectable)	DIP 4
Linear (default) (for pressure detection)	OFF
Square root extracting (to determine the volume flow)	ON

Measuring range mode (Mode selectable)	DIP 3
Unidirectional (0...+MR) (default)	OFF
Bidirectional (-MR...+MR)	ON

Measurement signal filtering (Time interval selectable)	DIP 5
10 s (default)	OFF
1 s	ON

Output (selectable)	DIP 6
Voltage 0-10 V (default)	OFF
Current 4...20 mA	ON

The following configurations can be preset via DIP switches.

The DIP switch sliding blocks can be moved without using tools. DIP switch 6 is not assigned.

**Pressure ranges**

In each case four different pressure ranges depending on the type of device can be preset via DIP switches **DIP 1** and **DIP 2**.

**Measuring range mode**

The measuring range is configured via DIP switch **DIP 3**, either into the unidirectional range or into the bidirectional range.

Therefore altogether eight pressure measuring ranges are configurable.

**Characteristic line - analog output**

The output characteristic line can be defined via DIP switch **DIP 4**. Here is distinguished between a linear and a square root extracting output characteristic line. When square root extracting output characteristic line is selected, the measuring range setting at DIP switches **DIP 1** and **DIP 2** is without function.

In that case the maximum pressure range is used for computation.

**Measurement signal filtering**

In order to stabilize the pressure measurement signal and the output voltage, the measurement signal is filtered.

The time interval for such averaging can be preset via DIP switch **DIP 5** to 1 or 10 seconds.

By a longer filtering interval, the settling time of the sensor is automatically extended.

Offset adjustment is done at a potentiometer on the circuit board within an adjustment range of  $\pm 10\%$  of the device's pressure range.

Ex-factory this potentiometer is in center position and is lacquer sealed.

All settings and adjustments that are made before must be done in this configuration.

Offset adjustment is carried out using a tool called "screwdriver 2.5" (blade width in mm).

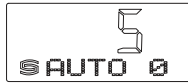
**Automatic offset setting**

1. Before setting the zero point, the device must be in operation for at least 60 minutes.
2. Connect pressure inputs P(+) and P(-) by means of a hose (pressure difference between both inputs = 0 Pa).
3. For zero point setting press "key" (auto zero) pushbutton uninterruptedly for 5 seconds.

A LED signalises prompting the calibration by short flashing, and after a short countdown the measured (current) offset value is added to the measurand and zero voltage safe stored.

Correct calibration is confirmed by steady light of the LED for 3 seconds respectively indicated in the display (optional) by switching from "AUTO 0" to "PROG 0".

Note: By releasing the button during the countdown (counter > 0), zero point setting is immediately terminated!



**Manual offset adjustment**

At the potentiometer OFFSET  $\Delta P$  can be balanced.

The adjustment range is ca.  $\pm 10\%$  of the pressure range.

Here another reference point different from zero point can be used.

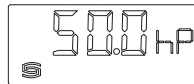
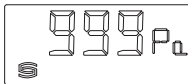
**Readout in the display**

In the 1st line of the display, the **ACTUAL pressure** up to the measuring range limit is displayed.

Switching between the units Pa and hPa (100 Pa = 1 hPa) happens automatically.

Pa = Pascal

hPa = Hektopascal



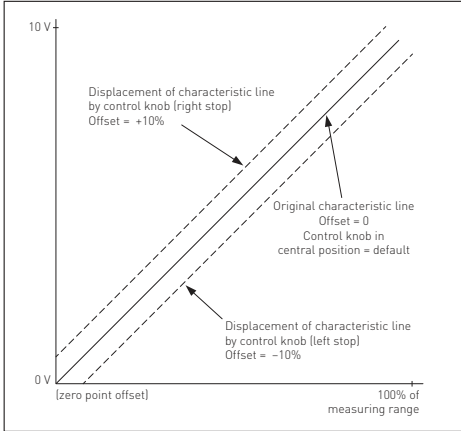
**U-variant**

(Range: 0...+xxPa)

After successful zero point calibration, the output voltage is 0 V at 0 Pa pressure difference (with the offset knob in central position)!

**Output voltage 0...10 V**

for pressure difference from 0 Pa to final value



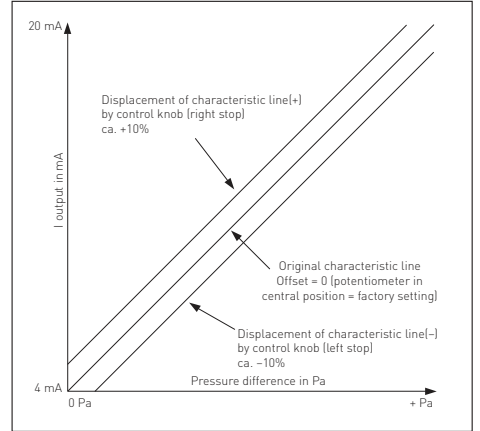
**I-variant**

(Range: 0...+xxPa)

After successful zero point calibration, the output current is 4 mA at 0 Pa pressure difference (with the offset knob in central position)!

**Output current 4...20 mA**

for pressure difference from 0 Pa to final value



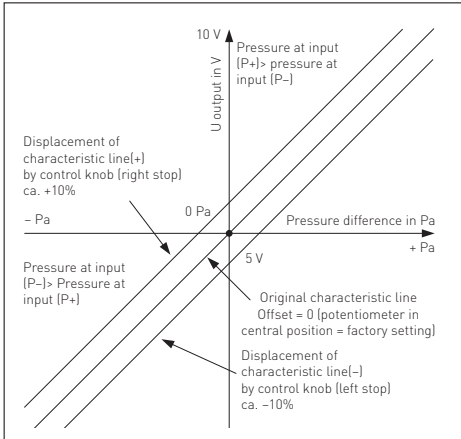
**U-variant**

(Range: -xx ... +xxPa)

After successful zero point calibration, the output voltage is 5 V at 0 Pa pressure difference (with the offset knob in central position)!

**Output voltage 0...10 V**

for pressure difference -ΔP... +ΔP



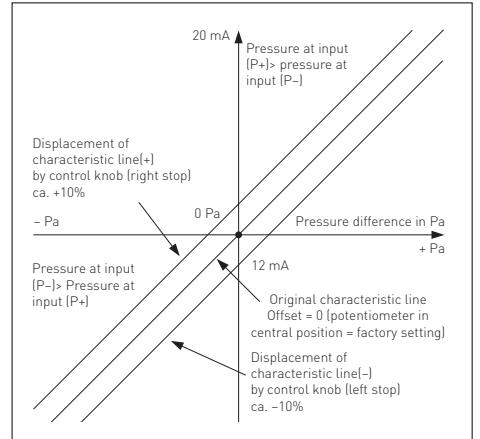
**I-variant**

(Range: -xx ... +xxPa)

After successful zero point calibration, the output current is 12 mA at 0 Pa pressure difference (with the offset knob in central position)!

**Output current 4...20 mA**

for pressure difference -ΔP... +ΔP



## GB General notes

This device can be mounted in any position. The voltage output is short-circuit proof. Applying overvoltage at the voltage output will destroy this device. Pressure ranges are indicated on the device label. Applying measuring pressures beyond that range will cause mismeasurements and increased deviations or may destroy the device.

- Attention! When leading in cables, make sure, they do not go under the board. This might buckle or damage hose connections!
- The voltage output is short-circuit proof. Applying overvoltage at the voltage output will destroy this device.
- Pressure inputs are "poled" i.e. the above-atmospheric pressure line must be connected at input P+ and the below-atmospheric pressure line must be connected at input P-.
- At an adjusting element, the output signal can be offset by  $\pm 10\%$  of the final value of the measuring range. In this way, possible ageing or drift effects can be compensated.
- Adjustment may only be made at the presence of differential pressure (ca. 90 % of final value).
- By changing the offset at the adjusting element, factory-calibration is lost!
- If this device is operated beyond the specified range, all warranty claims are forfeited.

Our "General Terms and Conditions for Business" together with the "General Conditions for the Supply of Products and Services of the Electrical and Electronics Industry" (ZVEI conditions) including supplementary clause "Extended Retention of Title" apply as the exclusive terms and conditions.

In addition, the following points are to be observed:

- These instructions must be read before installation and putting in operation and all notes provided therein are to be regarded!
- A suitable weather and sun protection hood must be used when installed outdoors.
- Devices must only be connected to safety extra-low voltage and under dead-voltage condition. To avoid damages and errors at the device (e.g. by voltage induction) shielded cables are to be used, laying parallel with current-carrying lines is to be avoided, and EMC directives are to be observed.
- This device shall only be used for its intended purpose. Respective safety regulations issued by the VDE, the states, their control authorities, the TÜV and the local energy supply company must be observed. The purchaser has to adhere to the building and safety regulations and has to prevent perils of any kind.
- No warranties or liabilities will be assumed for defects and damages arising from improper use of this device.
- Consequential damages caused by a fault in this device are excluded from warranty or liability.
- These devices must be installed and commissioned by authorised specialists.
- The technical data and connecting conditions of the mounting and operating instructions delivered together with the device are exclusively valid. Deviations from the catalogue representation are not explicitly mentioned and are possible in terms of technical progress and continuous improvement of our products.
- In case of any modifications made by the user, all warranty claims are forfeited.
- This device must not be installed close to heat sources (e.g. radiators) or be exposed to their heat flow.
- Direct sun irradiation or heat irradiation by similar sources (powerful lamps, halogen spotlights) must absolutely be avoided.
- Operating this device close to other devices that do not comply with EMC directives may influence functionality.
- This device must not be used for monitoring applications, which serve the purpose of protecting persons against hazards or injury, or as an EMERGENCY STOP switch for systems or machinery, or for any other similar safety-relevant purposes.
- Dimensions of enclosures or enclosure accessories may show slight tolerances on the specifications provided in these instructions.
- Modifications of these records are not permitted.
- In case of a complaint, only complete devices returned in original packing will be accepted.

### Notes on commissioning:

This device was calibrated, adjusted and tested under standardised conditions. When operating under deviating conditions, we recommend performing an initial manual adjustment on-site during commissioning and subsequently at regular intervals.

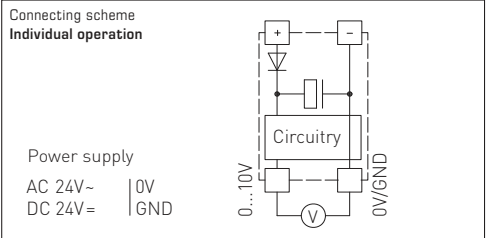
### Commissioning is mandatory and may only be performed by qualified personnel!

These instructions must be read before installation and commissioning and all notes provided therein are to be regarded!

### SUPPLY VOLTAGE:

For operating voltage reverse polarity protection, a one-way rectifier or reverse polarity protection diode is integrated in this device variant. This internal one-way rectifier also allows operating devices on AC supply voltage.

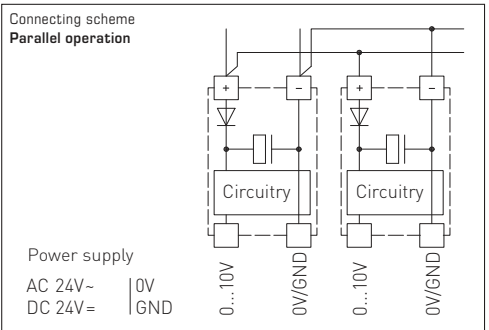
The output signal is to be tapped by a measuring instrument. Output voltage is measured here against zero potential (0V) of the input voltage!



When several devices are supplied by one 24 V AC voltage supply, it is to be ensured that all "positive" operating voltage input terminals (+) of the field devices are connected with each other and all "negative" operating voltage input terminals (-) (= reference potential) are connected together (in-phase connection of field devices). All outputs of field devices must be referenced to the same potential!

In case of reversed polarity at one field device, a supply voltage short-circuit would be caused by that device. The consequential short-circuit current flowing through this field device may cause damage to it.

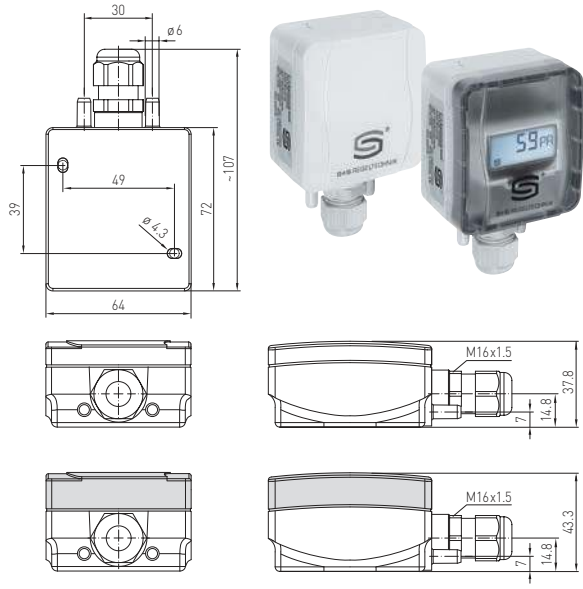
Therefore, pay attention to correct wiring!



**PREMASGARD® 211x**  
**PREMASGARD® 212x / 212x-SD**

S+S REGELTECHNIK

Maßzeichnung  
 Dimensional drawing  
 Plan coté  
 Габаритный чертёж



**PREMASGARD® 212x-SD**  
 mit Schnappdeckel  
 with snap-on lid  
 avec couvercle emboîté  
 с защелкивающейся  
 крышкой

ohne Display  
 without display  
 sin écran  
 без дисплея

mit Display  
 with display  
 avec écran  
 с дисплеем

© Copyright by S+S Regeltechnik GmbH

Nachdruck, auch auszugsweise, nur mit Genehmigung der S+S Regeltechnik GmbH.

Reprint in full or in parts requires permission from S+S Regeltechnik GmbH.

La reproduction des textes même partielle est uniquement autorisée après accord de la société S+S Regeltechnik GmbH.

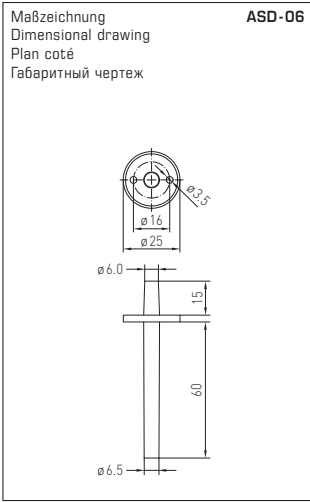
Перепечатка, в том числе в сокращенном виде, разрешается лишь с согласия S+S Regeltechnik GmbH.

Irrtümer und technische Änderungen vorbehalten. Alle Angaben entsprechen unserem Kenntnisstand bei Veröffentlichung. Sie dienen nur zur Information über unsere Produkte und deren Anwendungsmöglichkeiten, bieten jedoch keine Gewähr für bestimmte Produkteigenschaften. Da die Geräte unter verschiedensten Bedingungen und Belastungen eingesetzt werden, die sich unserer Kontrolle entziehen, muss ihre spezifische Eignung vom jeweiligen Käufer bzw. Anwender selbst geprüft werden. Bestehende Schutzrechte sind zu berücksichtigen. Einwandfreie Qualität gewährleisten wir im Rahmen unserer Allgemeinen Lieferbedingungen.

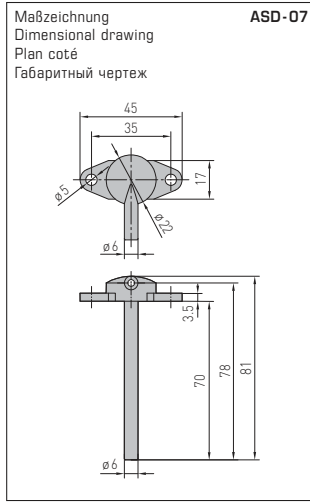
Subject to errors and technical changes. All statements and data herein represent our best knowledge at date of publication. They are only meant to inform about our products and their application potential, but do not imply any warranty as to certain product characteristics. Since the devices are used under a wide range of different conditions and loads beyond our control, their particular suitability must be verified by each customer and/or end user themselves. Existing property rights must be observed. We warrant the faultless quality of our products as stated in our General Terms and Conditions.

Sous réserve d'erreurs et de modifications techniques. Toutes les informations correspondent à l'état de nos connaissances au moment de la publication. Elles servent uniquement à informer sur nos produits et leurs possibilités d'application, mais n'offrent aucune garantie pour certaines caractéristiques du produit. Etant donné que les appareils sont soumis à des conditions et des sollicitations diverses qui sont hors de notre contrôle, leur adéquation spécifique doit être vérifiée par l'acheteur ou l'utilisateur respectif. Tenir compte des droits de propriété existants. Nous garantissons une qualité parfaite dans le cadre de nos conditions générales de livraison.

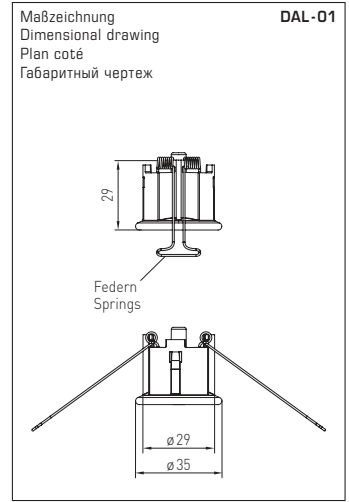
Возможны ошибки и технические изменения. Все данные соответствуют нашему уровню знаний на момент издания. Они представляют собой информацию о наших изделиях и их возможностях применения, однако они не гарантируют наличие определенных характеристик. Поскольку устройства используются при самых различных условиях и нагрузках, которые мы не можем контролировать, покупатель или пользователь должен сам проверить их пригодность. Соблюдать действующие права на промышленную собственность. Мы гарантируем безупречное качество в рамках наших «Общих условий поставки».



**ASD-06**  
Anschluss-Set  
Connection set  
Kit de raccordement  
Комплект соединительных деталей



**ASD-07**  
Anschlussnippel  
Connection nipple  
Embouts de raccordement  
Соединительный ниппель



**DAL-01**  
Druckauslass  
Pressure outlet  
Sortie pression  
Клапан выпуска давления



**WS-04**  
Wetter- und Sonnenschutz  
(optional)  
Weather and sun protection  
(optional)  
Protection contre les intempéries et le soleil  
(en option)  
Приспособление для защиты от непогоды  
и солнечных лучей (опция)