

**Sandberg®**

**Support**

<http://helpdesk.sandberg.it>

**Warranty**

There is a five-year warranty on your Sandberg product.  
Please read the warranty terms and register your new Sandberg product at [www.sandberg.it/warranty](http://www.sandberg.it/warranty)

**5**  
Years  
Warranty

For information on handling electronic waste, see [www.sandberg.it/weee](http://www.sandberg.it/weee)



**Sandberg®**

**In Car Wireless Charger IR 10W**

Quick guide

441-20

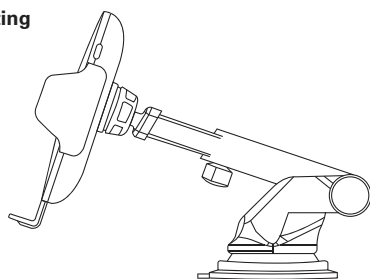


[www.sandberg.it](http://www.sandberg.it)

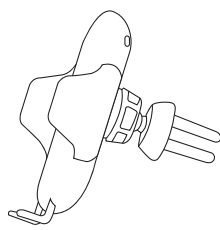
**Sandberg®**

Quick guide

**Mounting**

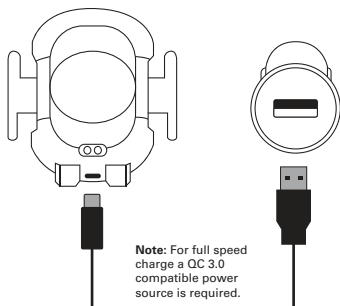


Mounting with Arm holder



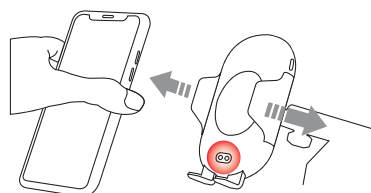
Mounting with Air vent holder

**Connect**



Note: For full speed charge a QC 3.0 compatible power source is required.

**Placing smartphone**

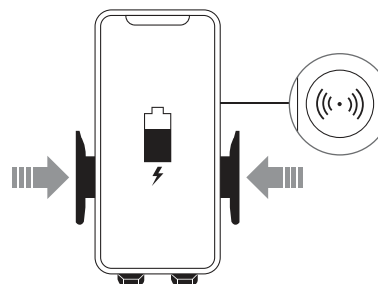


The IR sensor will automatically open the clamps.

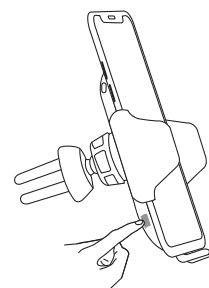
**Sandberg®**

Quick guide

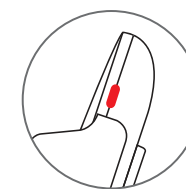
**Charging**



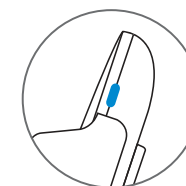
**Remove smartphone**



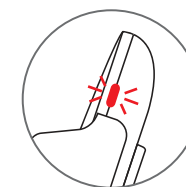
**LED indicators**



Red light:  
Standby, ready



Blue light  
flashing slowly:  
Normal charge  
operation



Red light flashing:  
Error