

TUNERS / CASSETTE / DISC PLAYERS						RADIO EQ STACK
	MINI	STAN	DIN	ISO DIN	SINGLE DBL DIN	
CHASSIS H	1 $\frac{1}{2}$ -2	2	2	2	3 $\frac{1}{8}$	3
CHASSIS W	7 $\frac{1}{8}$	7 $\frac{1}{8}$	7 $\frac{1}{8}$	7	7 $\frac{1}{8}$	7 $\frac{1}{8}$
CHASSIS D	4 $\frac{3}{4}$ -5 $\frac{1}{2}$	5 $\frac{1}{8}$ -6 $\frac{11}{16}$	5 $\frac{1}{8}$ -6 $\frac{11}{16}$	5 $\frac{1}{8}$ -6 $\frac{11}{16}$	5 $\frac{1}{8}$ -6 $\frac{11}{16}$	5 $\frac{1}{8}$ -6 $\frac{11}{16}$
NOSE H	1 $\frac{1}{8}$ -1 $\frac{1}{4}$	1 $\frac{1}{8}$ -1 $\frac{1}{4}$	2 $\frac{1}{8}$	1 $\frac{1}{16}$	3 $\frac{3}{4}$ -4	
NOSE W	4 $\frac{1}{8}$ -4 $\frac{3}{16}$	4 $\frac{1}{8}$ -4 $\frac{3}{16}$	7 $\frac{1}{2}$	6 $\frac{11}{16}$	6 $\frac{11}{16}$ -7 $\frac{1}{4}$	
SHAFT SP.	5 $\frac{1}{8}$ -5 $\frac{1}{4}$	5 $\frac{1}{8}$ -6				

UPDATED THROUGH '99   
 2000   
 2001   
 2002

# HONDA

## 1998-UP ACCORD

Sedan

IN DASH APPLICATION NOTES						
	N	N	K	K <sup>S</sup>	K <sup>4</sup>	N

APPLICATION KIT MODEL:	HA1564/TN2150*
HARNESS ADAPTOR:	HA08
ANTENNA ADAPTOR:	

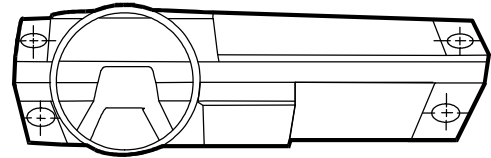
IN-DASH INSTALLATION AREA DIMENSIONS				
	DEPTH	MAX DEPTH	WIDTH	HEIGHT
CAVITY	9"	9"	7 $\frac{1}{2}$ "	4 $\frac{11}{32}$ "
DASH OPENING	TYPE: Double Din		7 $\frac{1}{2}$ "	4 $\frac{11}{32}$ "
DASH MATERIAL:	PLASTIC		THICKNESS: 1 $\frac{1}{8}$ "	
FOR MAX DEPTH	<input type="checkbox"/> REMOVE REAR SUPPORT <input type="checkbox"/> MODIFY CAVITY			

AMPLIFIER/EQ MOUNTING LOCATIONS (WxHxD)			
UNDER/IN DASH	UNDER SEAT	GLOVE BOX	TRUNK/CARGO
5 x 4 x 10"	20 x 3 $\frac{1}{2}$ x 12"	12 x 4 $\frac{1}{2}$ x 11"	Various

Dimensions shown are inches.  
 For inch/mm conversions refer to chart section.  
 \* Kit works for DIN ISO radio only.

### DASHBOARD

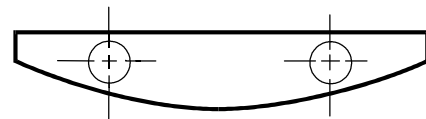
Factory Provisions: 1" dome tweeter on Premium systems  
 Aftermarket: 1" tweeter K



CAVITY W H D  
 2 x 2 $\frac{1}{2}$  x 7 $\frac{1}{8}$ "

### REAR DECK - SEDAN

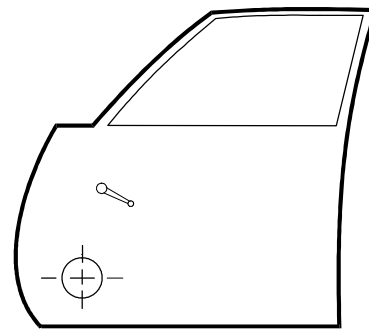
Factory Provisions: 6 x 9"  
 Aftermarket: 5 $\frac{1}{4}$ "K, 6 $\frac{1}{2}$ "K, 6 x 9"



CAVITY W H D  
 8 $\frac{7}{8}$  x 6 x 18" to trunk floor

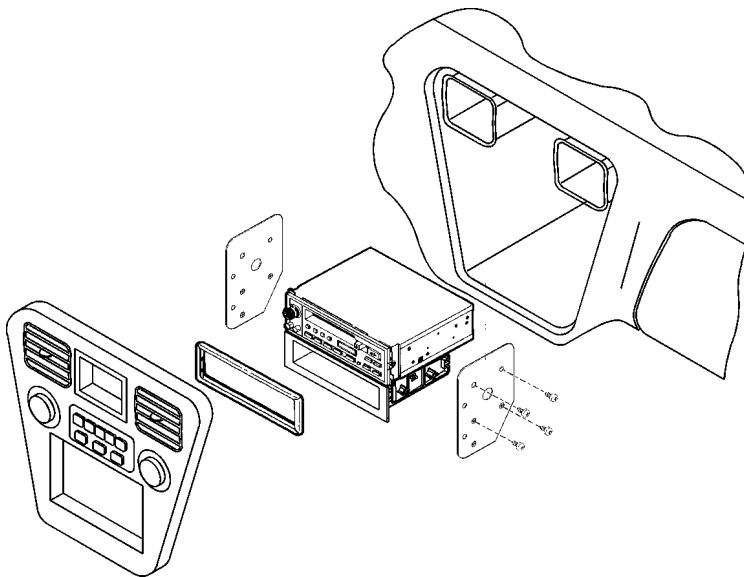
### FRONT DOORS

Factory Provisions: 6 $\frac{1}{2}$ " 3 - Hole In factory adapter  
 Aftermarket: 5 $\frac{1}{4}$ ", 6 $\frac{1}{2}$ "



CAVITY W H D  
 5 x 5 x 2" \*

\* Add 1 $\frac{1}{16}$ " more if back of factory adapter/basket is cut out.



NOTE: THIS MANUAL IS BASED ON CAREFULLY DOCUMENTED RESEARCH. ABSOLUTE ACCURACY IS ATTEMPTED BUT NOT GUARANTEED. USE THIS MANUAL AS A REFERENCE GUIDE. SCOSCHE, INC. CANNOT BE RESPONSIBLE FOR INCONSISTENCIES THAT MAY OCCUR.

- B = BACK UP PLATES REQUIRED.
- C<sup>1</sup> = CUT TRIM/PLASTIC (STRUCTURE).
- C<sup>2</sup> = CUT STEEL.
- D = BELOW DECK ONLY.
- D<sup>1</sup> = LIFT PORTION OF DECK. (MAY REQUIRE STRUCTURAL REINFORCEMENT).
- D<sup>2</sup> = CUT STEEL WHEN TOP MOUNTED. DO NOT IF BELOW DECK.
- D<sup>3</sup> = NARROW SURFACE, BELOW DECK ONLY.
- F<sup>1</sup> = MINIMUM MODIFICATION FILE SHAFT HOLES OR DASH OPENING.
- F<sup>2</sup> = MODIFY DASH CAVITY AND/OR PANEL.
- K = INSTALLATION KIT, SPACER OR ADAPTOR REQUIRED.
- K<sup>1</sup> = KIT MODIFICATIONS REQUIRED.
- K<sup>2</sup> = EXTENSION KIT RECOMMENDED.
- K<sup>3</sup> = WHEN EQUIPPED WITH FACTORY "ELECTRONIC" RADIO.
- K<sup>4</sup> = FABRICATE PANEL/BRACKETS.

- K<sup>S</sup> = WHEN EQUIPPED WITH STANDARD TWO SHAFT RADIO/TAPE PLAYER. FABRICATE KIT WHEN EQUIPPED WITH FLAT FACE ELECTRONIC RADIO/TAPE PLAYER.
- K<sup>S</sup> = SCOSCHE KIT RECOMMENDED.
- N = NOT RECOMMENDED. EXTENSIVE MODIFICATION REQUIRED.
- P = PERFECT WITHOUT MODIFICATION.
- P<sup>1</sup> = MODIFY OR REMOVE POCKETS.
- P<sup>2</sup> = COIN POCKET LOCATION IN DASH (MAY REQUIRE TRIM KIT).
- P<sup>3</sup> = PERFECT WHEN EQUIPPED WITH STANDARD TWO SHAFT RADIO, K WITHOUT.
- R = REAR LOAD ISOMOUNT.
- U = UNDERDASH.
- W<sup>1</sup> = WITH POWER WINDOWS ONLY.
- W<sup>2</sup> = WITHOUT POWER WINDOWS ONLY.

# 1998-UP HONDA ACCORD SEDAN



DASH (EX MODEL RADIO).

**PRELIMINARY:** DISCONNECT THE NEGATIVE BATTERY CABLE.

**ANTENNA:** THE FACTORY ANTENNA IS LOCATED IN THE REAR WINDOW GLASS.

## RADIO REMOVAL AND IN-DASH INSTALLATION:

**NOTE:** THE FACTORY PROVISION IS FOR A DOUBLE DIN STYLE STEREO OR STEREO/POCKET ASSEMBLY. AN INSTALLATION KIT IS NOT NECESSARY FOR AFTERMARKET INSTALLATIONS IF AN STEREO WITH ISO SIDE MOUNTING HOLES IN USED ALONG WITH THE FACTORY EQUIPPED OR SIMILAR STYLE POCKET.

1. EXTRACT (2) SCREWS FROM THE BOTTOM OF THE RADIO DASH BEZEL.
2. CAREFULLY POP OUT THE HAZARD SWITCH/CLOCK ASSEMBLY AND EXTRACT (1) SCREWS FROM BEHIND.
3. CAREFULLY PRY UP ON THE RADIO TRIM BEZEL TO RELEASE IT FROM THE DASH, UNPLUG THE CLIMATE CONTROLS AND REMOVE THE DASH BEZEL.

## FRONT DASH SPEAKER INSTALLATION:

**NOTE:** THE FACTORY PROVISION IS FOR 1" SATELLITE TWEETERS ON VEHICLES EQUIPPED WITH DELUXE STEREOS. IF THERE ARE NO TWEETER PRESENT, THE GRILL WILL HAVE TO BE PERFORMED AND MOUNTING BRACKETS FOR AFTERMARKET TWEETERS WILL HAVE TO BE FABRICATED.

1. CAREFULLY PRY UP ON TWEETER GRILL TO RELEASE, UNPLUG TWEETER AND REMOVE.

## FRONT DOOR SPEAKER INSTALLATION:

**NOTE:** THE FACTORY SPEAKER PROVISION IS FOR A 6½" 3-HOLE SPEAKER MOUNTED IN A FACTORY ADAPTER.

1. USING A SMALL PICK TOOL OR SCREWDRIVER REMOVE THE COVER CAP AND SCREW IN THE BOTTOM OF THE DOOR PULL CUP AND THE DOOR RELEASE CAVITY
2. SLIDE THE DOOR RELEASE ASSEMBLY FORWARD TO RELEASE IT FROM THE PANEL, UNPLUG POWER LOCK CONNECTOR, UNHOOK THE METAL ROD AND REMOVE THE ASSEMBLY.
3. LIFT PULL CUP / POWER SWITCH PANEL, UNPLUG AND REMOVE.
4. UNSNAP AND REMOVE INSIDE MIRROR COVER TRIANGLE.
5. REMOVE ONE PANEL FASTENER FROM THE TOP FRONT CORNER OF THE DOOR PANEL.
6. PRY OUT ON THE PERIMETER OF THE DOOR PANEL TO RELEASE THE FASTENERS, LIFT PANEL UP TO RELEASE, UNPLUG DOOR PANEL LIGHT AND REMOVE THE DOOR PANEL.
7. EXTRACT THE (3) SCREWS SECURING THE SPEAKER TO THE ADAPTER, UNPLUG THE LEADS AND REMOVE.

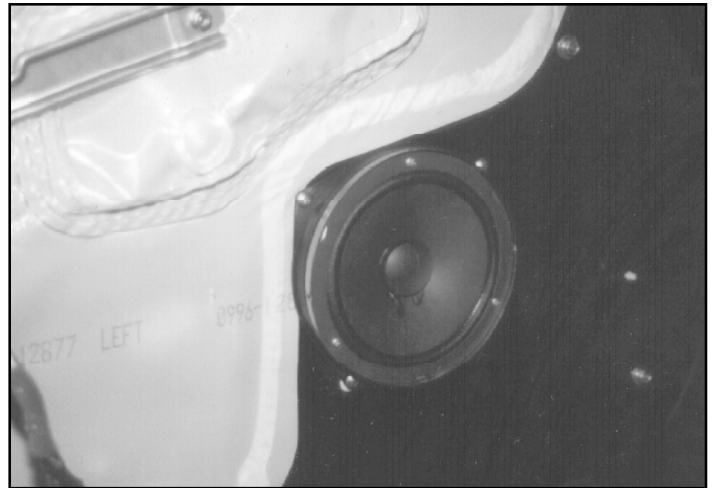
## REAR DECK SPEAKER INSTALLATION:

**NOTE:** THE FACTORY SPEAKER PROVISION IS FOR A STANDARD 6 X 9" SPEAKERS.

1. FROM INSIDE THE TRUNK, EXTRACT (2) SCREWS SECURING EACH SPEAKER GRILL TO THE REAR DECK.
2. LIFT UP AND REMOVE THE SPEAKER GRILLS FROM THE INSIDE OF THE VEHICLE.
3. EXTRACT (4) 8 MM BOLTS SECURING THE SPEAKER, UNPLUG AND REMOVE.



FRONT DOOR PANEL.



FRONT DOOR 6½" SPEAKER PROVISION.



REAR DECK 6 X 9" SPEAKER PROVISION.