

SEA EAGLE.com[®]



Super Motormount Boat

124SMB

Instruction & Owner's Manual

For video instructions visit SeaEagle.com/Instructions

Sea Eagle Boats Inc.
19 N. Columbia Street, Suite 1
Port Jefferson, NY 11777
1-800-748-8066

September 2012



Sea Eagle Guarantee

Congratulations on purchasing a Sea Eagle! With over 40 years of experience in designing, selling and using these quality inflatables, we're confident that you are going to love your Sea Eagle and we're ready to proudly stand behind them.

Sea Eagle Warranty

All Sea Eagle products come standard with a 3 year warranty against any manufacturing defect that begins the date that your product is delivered. Sea Eagle will refuse delivery on all packages without a valid return authorization number and will not be responsible for the shipping or handling charges. To obtain a return authorization number, please contact Sea Eagle directly unless you purchased from an authorized dealer/reseller in which case you should contact them for more information.

Sea Eagle must inspect equipment in order to determine if there is a defect. In the event that an item must be shipped back to us for inspection, Sea Eagle will only reimburse the standard return shipping charge through FedEx, UPS or the U.S. Post Office at published shipping rates. Retail shipping outlets like The UPS Store will not be reimbursed and you will be responsible for handling and packing charges.

The Sea Eagle warranty does not apply to products that are manufactured by Minn Kota or Torqeedo. These products are covered by their own, respective warranties. Please refer to the manufacturer's warranty of each product for details.

If you received an item damaged, please call the shipping carrier to report damaged merchandise. Do not return damaged merchandise until it has been inspected by the carrier. Sea Eagle will be notified by the carrier when they have completed their inspection and if necessary, Sea Eagle will arrange for the repair or replacement of damaged merchandise.

Decals, Stickers & Registration

Always contact your state boating authorities for information on boating registration and regulations. Most states require you to register your boat if you are using a motor.*

Upon registration it may be required to provide the Manufacturer's Statement of Origin.

Purchases made through an authorized dealer or reseller may require for you to contact them directly in order to obtain this. You may be charged your own state sales tax if you were not charged sales tax at the time of purchase.

Registered boats generally require for the registration number to be applied to the boat. We do not recommend the use of decals or stickers as they tend to crack and peel over time with the repeated inflation and deflation of your Sea Eagle. Instead we suggest applying these numbers to a small piece of hard plastic or marine plywood and hanging it from your boat like a license plate if permitted by your state. Another method is to apply the numbers to the hull using either PVC based paint or permanent marker.

**** Please note that our Sea Eagle Explorer Kayaks, FastTrack Kayaks, Sport Kayaks and LB-11 LongBoard are not rated for use with a motor.***

Contact Us

Unlike many other companies today we pride ourselves on answering the phone and helping you with any concerns, questions or special ordering needs that you may have!

Feel free to give us a call at 1-800-748-8066 and we will be happy to talk with you!
Our business hours are Monday to Friday from 9-5 (EST).

Sea Eagle Boats Inc.
19 N. Columbia Street, Suite 1
Port Jefferson NY 11777
1-800-748-8066
staff@seaeagle.com

Operating Your Sea Eagle

Fishing

The 124SMB Super Motormount Boats is our largest and most spacious Motormount Boat with plenty of room for multiple fishermen, gear, tackleboxes, coolers and more! Adding floorboards to your 124SMB will increase your stability allowing you to easily stand up and cast as well.

Motoring

The 124SMB is rated for use with either a small electric or gas motor (6HP max/75 lbs weight) with the use of the motor mount. Since your Motormount Boat is designed for use with small engines, you won't always be able to motor past every current. These boats are rated by the National Marine Manufacturer's Association for a motors maximum capacity for both dry weight and horsepower. Under no circumstance should you equip a motor that exceeds these capacities (whether they be for the dry weight or the horsepower or both). Please also note that you should never tow your Sea Eagle above 3 M.P.H. in calm waters and **DO NOT ATTEMPT TO TOW PEOPLE!** Not only can these things result in damaging your Sea Eagle Motormount Boat, it will also void your Sea Eagle warranty.

Gas motors are measured in units of horsepower and are generally built with power and speed in mind. To get the best performance out of your Motormount Boat we recommend using a 15" short shaft, although a longer shaft can be used in greater depths of water.

Traditional electric motors are measured in units of thrust (the pulling or pushing power of a motor) and are slower and quieter on the water than gas motors. There is no direct correlation of thrust to horsepower although most will consider traditional electric motors to be about a 1HP (which is more of a guess than an approximation).

Advantages of having an electric motor over a gas is that they are lighter to transport and easier to maintain. In order to operate an electric motor you will need a 12V deep cycle marine battery. Other suggested accessories are a battery charger and a battery power center to house the battery itself.

The Torqeedo Travel 1003s electric motor is unlike any other electric motor on the market today. Powered by a waterproof lithium ion battery (battery charger included), the Travel 1003s delivers the true 3HP performance of a gas motor! Features include on board computer display, GPS and an audible alarm when the battery reaches 30%.

Torqeedo electric motors are lighter to transport than gas motors and do not require a heavy 12V battery like traditional electric motors. You can also power your Torqeedo Travel 1003s using the Sea Eagle/PowerFilm Solar Panel.

Minn Kota, PowerFilm & Torqeedo products come with a manufacture warranty and are not covered by the Sea Eagle warranty. All warranty work is handled directly by the respective manufacturer and all sales on these products are final.

Rowing

YAlthough the 124SMB is our largest Motormount Boat, it rows fairly easy. In order to row it comfortably, we have found that the wooden bench seat for this boat is the best choice. Place the oars through the blue carry handles on the sides of the boat which double as oarlocks.

When you row forwards, you face backwards. This means you will have a great view of where you have been, but almost no view of where you are going. Be sure to check over your shoulder frequently to avoid any obstacles or obstructions. Be aware of the conditions of the water you are rowing in.

You should be aware of any and all obstacles and dangers that you might encounter (i.e. buoys, docks, moored boats, motor boats, sail boats, waves, weather, lightning, rain, etc). Please note to give way to both motor boats and sail boats as they have the right of way.

If you are new to rowing, we suggest that you practice rowing for several hours near the shore before venturing out further onto open waters. Practice only makes perfect and ensures that you are comfortable in your boat in almost any weather conditions you may come across. Continually practice your rowing strokes, trying to make them as fluid and smooth as possible.

When pulling your oars through the water you should try to keep the blades fully immersed in the water, but as close to the surface as possible. This will give you greater rowing leverage. Even if you are motoring your Sea Eagle, we always

Safety

In a manual of this type it is impossible to give adequate space to the topic of water safety. For further information on boating safety, visit USCGBoating.org or enroll in one of the excellent water safety courses provided.

It is your responsibility to be aware of and comply with all relevant safety regulations. For all water recreation or sport you should have a reasonable swimming ability. Just as swimmers have a cardinal rule about not swimming alone, it is strongly advised that you should never go boating alone.

Boating Safety Tips

- Always wear a USCG approved PFD (life vest) at all times while on the water.
- Be aware of your local boating rules and regulations and abide by them accordingly.
- Check inflation levels each time before you go out and inflate your boat for a full 24 hours before undertaking long trips.
- DO NOT allow children to use Sea Eagle unsupervised.
- DO NOT consume alcohol while boating or operating a boat while under the influence of alcohol or drugs.
- DO NOT drag your Sea Eagle over rocks or gravel if it can be avoided.
- DO NOT exceed the certified maximum capacities of this boat under any circumstance.
- DO NOT go boating alone.
- DO NOT use compressors, co2 or compressed air for inflation, only use Sea Eagle recommended pumps.
- DO NOT use your Sea Eagle Boat as a personal flotation device as they are designed for leisure/recreation in mind.
- DO NOT sleep inside of your Sea Eagle while on the water.

Safety Equipment

The type of water conditions you are on should determine the type of safety equipment that you should have on board. For all types of boating we strongly recommend that every passenger wear a USCG approved PFD (personal flotation device) like a life vest. In most places this is a requirement by law, but from our point of view it is also an exercise of good judgment to have a PFD for all passengers. Other important items to consider for all types of boating...

Drinking Water & Snacks: Kayaking is a physical activity that can work up both a thirst and a sweat and especially on a hot or warm day it is a good idea to have drinking water readily available to you to prevent dehydration. Bring a good amount of water for all passengers as you want to avoid drinking the water you're kayaking in which may be full of contaminants.

Extra Clothes/Layers: You never know when the weather can change and it's a good idea to come prepared with extra clothing. If you have a dry (waterproof) bag than we recommend storing them inside so they're not damp in case of emergency.

First Aid-Kit: The contents of the kit may vary depending upon your preferences, but make sure to carry a kit that reflects the possible dangers for the conditions you are in.

Foot Pump/Repair Kit: Although our boats are both durable and rugged, it may be possible that you need to make a repair while on the water in which case you'll need the repair kit and the foot pump to re-inflate the boat. If this is your first repair, you may also want to bring this instruction manual with you.

Sun/Rain Protection: A hat can protect both your face and head from the rain or sun. You may also want to carry sunscreen with you as both the sun and the sun's reflection from the water can do serious damage to your skin. If you are out for prolonged periods of time you may need to reapply sunscreen as needed.

Whistle: Having a whistle readily available to you in case of emergency is a great way to attract the attention of others if assistance is needed.

Inflation Valves & Pumps



One-Way Air Valves

Place the retainer ring over the valve base and screw the valve into the base. Unscrew the outer cap on the valve to reveal the inflation port.



MB-80 Electric Pump (OPTIONAL)

This electric pump works using the 12V power outlet in your car. Please note that the star shaped valve adapters and deflation cap are not necessary for Sea Eagle boats.



Foot Pump

The foot pump is a high capacity pump made of durable ABS plastic. To use simply press the two halves of the foot pump together and connect the hose to the inflation port marked OUT.



First, make sure your pump is switched OFF and then insert the power adapter into the power outlet. If you have a weak battery you may want to keep your engine running while you're using the pump.



The triple nozzle adapter comes with the foot pump and is needed to inflate both the one-way air valve and the pipe valves. Insert the ribbed end of the large rounded adapter piece into the hose of your foot pump.



No extra nozzles are needed to inflate the main air chambers of your boat, just insert the pump into the valve and switch it on. Do not drop or suddenly move the pump while it is



To inflate a one-way valve, simply place the adapter into the valve and begin pumping with your foot pump. When you're finished, screw the outer cap of the valve closed.



Air compressors that are designed for other uses like tire inflation (usually around 50 PSI) can easily harm your Sea Eagle which works at a much lower pressure of 1.1 PSI. For this reason we recommend only using Sea Eagle pumps.



To begin unroll your boat on a clean, flat surface. Locate the three main air chambers (they are numbered 1-3) and screw the deluxe one-way air valves to them. Make sure not to cross the threads when screwing the valve into the base or when tightening the outer cap.



Lift the floorboards and insert the large strut into the center to connect the two pieces. Force the boards down into the boat, being careful not to pinch your fingers or toes in the process.



If you plan on installing the floorboards and the motormount set, then only inflate chamber #1 around 50% to capacity. This will allow the boat to take shape and make installation much easier. Otherwise, inflate each of the three chambers (in numerical order) to their full capacity.



Once the floorboards are in and connected, insert the two small struts on each side of the floorboards where the bow and stern pieces meet.



Floorboards (OPTIONAL)

124SMB floorboards are made of rugged, marine plywood and provide stability for standing and hull rigidity. Floorboard set includes bow and stern (identified by cutout) pieces and aluminum "H" strut set.



Motormount Set

The motormount set includes an aluminum bench seat, aluminum board and motor mount for a motor made out of marine plywood.



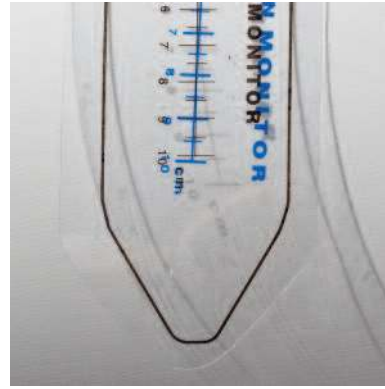
Place both the bow and stern floorboard pieces inside of the boat so that they overlap in the middle.



Place the aluminum bench seat between the grommets in front of chamber #1 (behind the rod holders) and then place the aluminum motor mount board (which you can identify by the pre-drilled holes in the middle) between the grommets near the carry handles.



Slide the aluminum motor mount rods through the grommets and the fittings on both the bench seat and motor mount board. Once the rod is installed put the rod pin through the hole at the end of the rod. Repeat this process for both sides.



You can safely inflate one centimeter beyond the diagram. Once fully inflated you should be able to indent your thumb into the boat about $\frac{1}{2}$ to $\frac{3}{4}$ of an inch. If you are using floorboards, only inflate the main chambers 75% full until they're installed and then finish inflation.



MM Installation
Attach the L-Bracket and wooden motor mount to the motor mount bench.



The brackets fasten in two places, the wooden motor mount block and the aluminum motor mount slat. Connect the bracket to the motor mount slat first by taking 1 short bolt & 1 washer and push the short bolt through the bottom of the slat and through the bottom of the bracket.



Attach the brackets to the motor mount on the lowest fitting. Use 1 short bolt & 1 washer and put the short bolt through the bracket and through the motor mount and then fasten it with the knurled nut. Once installed, proceed to finish the inflation of your 124SMB.



AB25-3 Oar Set
The AB25-3 Oar is 56" long and easily rows your Sea Eagle 8 or 9. Each oar includes an ABS blade, aluminum shaft and drip ring.



Assemble the AB25-3 by sliding the drip ring over the shaft and then connect the shaft to the blade. Tighten the ring at the bottom of the blade so that its secure on the shaft. We always recommend testing the connection of the blade and shaft on dry land rather than in the water.



To row your boat using the AB-253 oar set, use the blue carry handles as oar locks. Although the handle is a snug fit for the shaft of the oar, you can keep the drip ring on the inside of the boat to act as a stopper and keeping the shaft in place.



Wooden Bench Seat

The 124 bench seat (58" x 10", 11 lbs) is easily installed, by running the grab line through the pre-drilled holes. Made of 3/4" 15 ply marine plywood this seat can hold two adults and is resistant to salt-water, gas & oil.



EZ Cart (W) (OPTIONAL)

This simple to use and easy to assemble cart wheel system fits under the 124 SMB making transport even easier. Allows you to roll your Sea Eagle to & from your launching point. Breaks down for easy storage.

Accessories (OPTIONAL)

Optional Accessories

We offer a wide variety of accessories and some accessories may be considered optional if they were not included with the package that you purchased.



Rod Holder (OPTIONAL)

The open design of this rod holder accepts all types of rod and reel systems. Includes side mount and top flush mount adapters and hardware. Can be mounted to either the wooden bench seat or aluminum boards.



Swivel Seat w/Spider & Seat Caddy (OPTIONAL)

Offers both cushioned comfort and support for your back. The only way to use the swivel seat with the 124 is to also use the spider stand which isn't recommended for use while the boat is moving.



Carry Bag (OPTIONAL)

This 440 Denier Nylon carry bag measures 26"x48" and is great for the transportation of your Sea Eagle. Comes with convenient carry strap and drawstring.



Deluxe Transom Seat (OPTIONAL)

Ideal for passengers in the bow as it sits low to the floor. Easily inflates & features a nylon cover for firm comfortable back support. Held in place by two straps (one on each side) that clip onto the grab line.



Mushroom Anchor Kit (OPTIONAL)

This anchor kit includes a 8 lb. PVC coated mushroom anchor, 25' of 5/16" rope. The kit also includes an anchor grip to hold the rope in place, this grip can be mounted to any of the wooden bench seats. easy storage.

Wide Canopy (OPTIONAL)

Keeps you cool and protected from the harmful UV rays of the sun or keeps you dry in the rain. Easily folds down and out of the way.



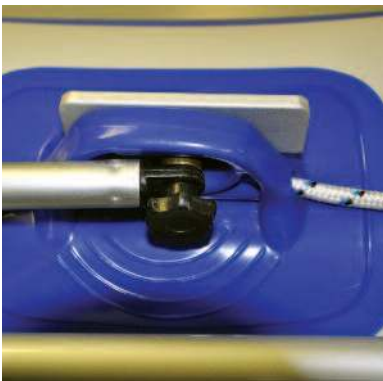
Take the stern strap on the v-brace and connect it to the grab line on the very last grommet on the stern of your boat, repeat this process on the other side.



Begin by feeding the tubing through the canopy canvas. When you reach the opening in the middle at the top of the canvas, attach the bow strap over the aluminum tube. With the strap attached, continue to feed the tubing through the canvas.

Paddling Life Vest (OPTIONAL)

U.S.C.G approved! This type III PFD is great for all boating needs and gives you plenty of arm room in case you feel like rowing. Comes in various sizes with three adjustable buckles and adjustable nylon straps for a tight secure fit.



Secure the canopy into position by inserting the bolt through the metal plate. Once through place the brass washer on the bolt and feed the bolt through the side carry handle and secure with the black knurled nut. Make sure that the metal plate is on the inside of the boat.

3M Marine Cleaner (OPTIONAL)

Cleans, shines, conditions and protects vinyl, rubber and plastic surfaces. Deep cleans dirt and grime, enhances appearance. Restores natural sheen, protects surfaces. Fresh lemon scent.



Take the two bow strap on the v-braces and connect it to the grab line on the front grommets on the bow of the boat.

303 Protectant (OPTIONAL)

We all try to keep our boats clean, but there are some stains you just can't avoid. 3M Marine Cleaner & Restorer can remove the toughest stains from mud, bird droppings, oil, and many others.





Torqeedo 1003s (OPTIONAL)

Weighing just 29.5 lbs with a short shaft of 23", the Torqeedo Travel 1003s delivers the performance of a 3HP gas motor and develops 4-5 times the power of traditional electric motors.



TIP: Never connect the (+) and the (-) terminals of the battery together. Take care that no metal object can fall onto the battery and short the terminals. This would immediately lead to a short and utmost fire danger.



Minn Kota Motors (OPTIONAL)

Minn Kota Motors are the most reliable electric trolling motors on the market. These motors run off a 12v deep cycle marine battery (which is not included or sold by Sea Eagle).

Deflation & Storage

Although PVC material can become brittle in extremely cold temperatures, you can still safely store your Sea Eagle in them so long as you avoid dropping it and do not subject it to any sudden impacts.

If you're planning to leave your Sea Eagle outside, be sure to keep it raised up off of the ground. Its also a good idea to keep it covered so that it is not directly exposed to berries, leaves, rain, sunlight and other elements. Sea Eagles that are left in water will most likely have to be emptied from time to time.



Portable Charger (OPTIONAL)

Protect and preserve your battery life with this portable 10 AMP, Minn Kota battery charger. Features fully automatic 3-stage charging. Weighs 17 lbs. Input: 120V AC Output: DC 12V

Make sure that your boat is dry before storing your kayak for more than a few days, to remove any excess moisture that could cause unsightly mildew. Choose a cool, dry spot when storing in an enclosed area like basement, closet or garage.



Battery Power Center (OPTIONAL)

Allows trolling motor leads and charger leads to be connected without opening the box. Built-in battery meter includes two 12-volt accessory plugs and three manual reset circuit breakers. Fits group 24 and 27 size batteries.



Begin by deflating your Sea Eagle. To deflate, unscrew the valves from the base. Most of the air is immediately released.



Deflate by unscrewing all of the deluxe oneway valves from the 3 main chambers. You can expedite this process by using the foot pump to suck any excess air out of the boat.



Rotating the tube from left to right will help with removing the motor mount from the top tubes. Remove both the floorboards and motor mount before you roll up your boat. Starting from the bow, roll toward the stern of the boat tightly to force out any remaining air.



Crossed Threads
Make sure that both the inner valve and the outer cap are firmly screwed together. If threads are crossed on either item a slow leak could result. A good way to avoid this is to first turn the outer cap back 1/4 turn.



When you are done your boat will be ready for storage. Note: Carry Bag sold separately



Denting
Check the O-Ring base for dents. Denting can occur when the valve body lies across the O-Ring during storage. Heat the O-Ring with a hairdryer for about a minute or so until the dent eases itself out.

Troubleshooting

If your boat is losing air it doesn't necessarily mean that it's leaking. For instance a boat that is inflated late in the day with 90° air may cool 20° overnight. The cooler air will exert less pressure on the hull and the boat will appear softer the next morning. When there has been no variation in temperature and your boat is losing air then it is time to start looking for the leak.

The first thing you should do when looking for a leak is to actually look at the boat. Visually inspect the boat from a few feet away and if necessary, flip it over and closely check the outside. Any large leaks when your boat loses a considerable amount of air should be clearly visible.

Be sure to check the tightness of the one-way recessed valves as well and if necessary, tighten them with the valve wrench included in the orange repair kit canister.

If you have a rough idea of where your leak is but can't see it, you may want to try listening for it as you may be able to hear the air escaping and pinpoint the leak.

Other troubleshooting techniques you can try to locate the leak is to douse/spray a mix of dishwashing liquid over suspicious areas. The leak may produce bubbles that will pinpoint the location of the leak.



Diaphragm Check
Check the black diaphragm at the bottom of the inner valve for grains between the diaphragm and the inner valve. Also check the threads on the inner valve, boat hull, and outer cap for any dirt or sand which might break the seal.

Repairs

Although our Sea Eagles are very rugged and tough, you may still experience the occasional puncture through use of your boat. Fortunately most repairs are fairly easy and only take a few minutes.

For an extensive repair please contact us directly for assistance or a quote to have it sent back and repaired at our facility. Repair fees start at \$75.00 and do not include return shipping charges.



Repair Kit

All Sea Eagles come standard with a repair kit which includes two material patches and tubes of PVC based glue.



Repair: Patching

Leaks that are larger than a pinhole can be patched. Most patches can be done in a few minutes, but we do offer a repair service for more complex jobs out of warranty.

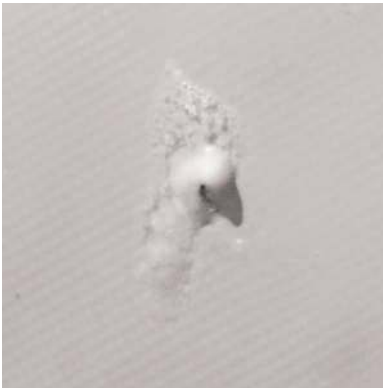


PVC Based Glue

For repairs on our boats you will need to use a PVC based glue. We suggest this 12 oz. can of Vyna Bond if you need more glue than what comes standard in the repair kit.



Once you have located the leak make sure you thoroughly clean the area surrounding the leak of any dirt or grime. After the area is clean and dry you can circle the area to make locating the leak easier throughout the repair process.



Repair: Pinholes

Deflate your boat and thoroughly clean and dry the area that is to be repaired. For small punctures less than 1/8" apply a small drop of glue and allow 12 hours to dry.



Using a ball point pen, trace the outline of your patch which should be large enough to overlap the damaged area by approximately 1/2". Angle the pen inward a bit so that the ink will be covered by the patch later.



For immediate use allow 30 minutes to dry and then inflate the compartment with the repair only 3/4 full and be sure to make a more permanent repair later.



Apply adhesive to the dull side of the patch and around the area to be repaired. Coat the affected area lightly but completely with glue.



Place the patch on the damaged area and press down firmly. Let the glue sit for 2-4 minutes until it appears tacky. If glue does not hold, heat patch with a hair dryer.



Methyl Ethyl Ketone
Methyl Ethyl Ketone or MEK is a solvent used to dissolve PVC based glue in case you need to remove a D-Ring, glue residue or patch. MEK is a strong solvent and can damage the material to the boat so use it very carefully and sparingly.



A temperature of approximately 160 degrees will activate the adhesive and from there you can press firmly on the patch until cooled. It is VERY IMPORTANT that you DO NOT use a hair dryer on an inflated boat.



MEK is very flammable, keep away from fire, lit cigarettes or sparks. When handling MEK we recommend wearing rubber gloves. Be sure to use MEK in a well ventilated area and heed all warnings from the manufacturer.

A temperature of 160° degrees will activate the adhesive and from there you can press firmly on the patch until cooled. DO NOT use a hair dryer on an inflated boat and NEVER use a heat gun on your boat.



DO NOT USE D-Rings
Motormount Boats are manufactured with a completely different type of (stretchable) PVC material that can't accommodate the use or application of gluing on D-Rings.

To remove a patch with MEK, dip a cotton swab and apply it to the outer edges. The glue will start to dissolve and the patch will begin to separate from the boat. Continue to carefully apply MEK to the underneath of the patch and continue peeling it off. Once removed you can also clean off any residual glue with the MEK solvent.

To apply a new patch, allow approximately 30 seconds for the MEK to evaporate and apply the item to the boat.



2-Part Adhesive
The adhesive that comes standard in your repair kit works for most repairs and installations, but for more detailed and extensive repair we recommend a 2-part PVC adhesive.