

# SENA



## **DWO 1-Lite**

**Motorcycle Intercom**

# PRODUCT FEATURES

Blast your favorite tunes, talk over the intercom with your buddies, hear directions from your GPS and more, all through your DWO 1-Lite Bluetooth® headset. With built-in Bluetooth® capabilities, HD Intercom, technology has never felt so minimal or freeing.



Bluetooth® Integrated



Intercom up to 1 km (0.6 mi)\*



Two-way Intercom



LCD Display



Firmware Upgradeable

\*in open terrain

# TABLE OF CONTENTS

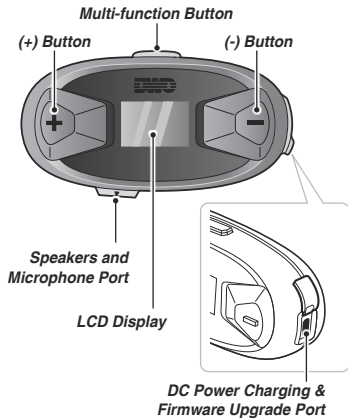
<b>1</b>	<b>BEFORE STARTING</b>	<b>5</b>		
1.1	Package Contents	5		
<b>2</b>	<b>INSTALLING THE HEADSET ON YOUR HELMET</b>	<b>6</b>		
2.1	Using the Clamp	6		
2.2	Using the Glued Surface Mounting Adapter	6		
2.3	Installing the Speakers	7		
<b>3</b>	<b>GETTING STARTED</b>	<b>8</b>		
3.1	Button	8		
3.2	LCD Display	8		
3.3	Charging the Headset	8		
3.4	Powering On and Off	9		
3.5	Adjusting the Volume	10		
3.6	Downloadable Software	10		
	3.6.1 Cycle Gear Bluetooth Device Manager	10		
<b>4</b>	<b>PAIRING YOUR HEADSET WITH OTHER BLUETOOTH DEVICES</b>	<b>10</b>		
4.1	Phone Pairing	11		
	4.1.1 Initially Pairing the DWO 1-Lite	11		
	4.1.2 Pairing When the DWO 1-Lite is Turned Off	12		
	4.1.3 Pairing When the DWO 1-Lite is Turned On	12		
4.2	Second Mobile Phone Pairing	13		

<b>5</b>	<b>MOBILE PHONE USAGE</b>	<b>13</b>	<b>8</b>	<b>GENERAL SETTINGS</b>	<b>19</b>
5.1	Using Phone Functions	13	8.1	Function Priority	19
5.2	Speed Dialing	14	8.2	Configuration Menu	19
	5.2.1 Assigning Speed Dial Presets	14		8.2.1 Assigning Speed Dial	21
	5.2.2 Using Speed Dial Presets	14		8.2.2 Voice Prompt (Default: Enable)	22
				8.2.3 Delete All Pairings	22
<b>6</b>	<b>STEREO MUSIC</b>	<b>16</b>	8.3	Firmware Upgrades	22
<b>7</b>	<b>BLUETOOTH INTERCOM</b>	<b>16</b>	<b>9</b>	<b>TROUBLESHOOTING</b>	<b>22</b>
7.1	Intercom Pairing	16	9.1	Fault Reset	22
7.2	Two-way Intercom	18	9.2	Factory reset	23
	7.2.1 HD Intercom	18			

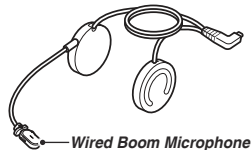
# 1 BEFORE STARTING

## 1.1 Package Contents

### • Headset Main Unit



### • Speakers and Wired Boom Microphone



### • Clamp



### • Glued Surface Mounting Adapter



### • Speaker Sponge (2)



### • Microphone Sponge (2)



### • Hook and Loop Fasteners for Speakers (2)



### • USB Power & Data Cable (USB-C)

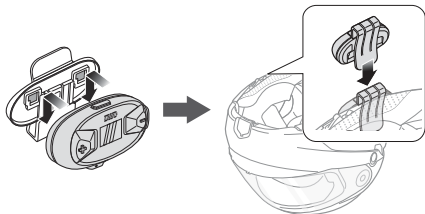


## 2 INSTALLING THE HEADSET ON YOUR HELMET

Before installing the headset, you need to choose between the clamp and the glued surface mounting adapter. To install the headset to the helmet, follow the steps below:

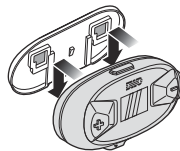
### 2.1 Using the Clamp

1. Insert the main module into the clamp using the two connecting slots on the back.
2. Insert the headset into the helmet using the clamp.

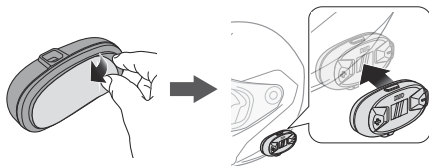


### 2.2 Using the Glued Surface Mounting Adapter

1. Insert the main module into the glued surface mounting adapter using the two connecting slots on the back.



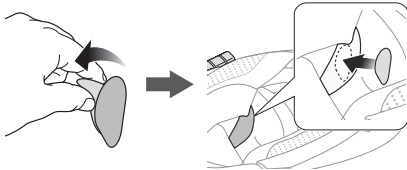
2. Remove the cover of the adhesive sticker on the back to glue the headset on to the helmet.
3. Attach the headset on the left side of the helmet.



## 2.3 Installing the Speakers

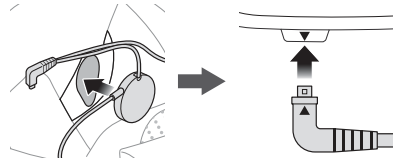
If you want to install speakers into the headset, follow the steps below:

1. Remove the cover of the adhesive sticker of the hook and loop fasteners for speakers.
2. Place the sticker on the helmet.



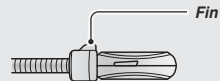
3. Place the speaker on the hook and loop fasteners.

4. Insert the Speakers and Microphone plug into the headset.



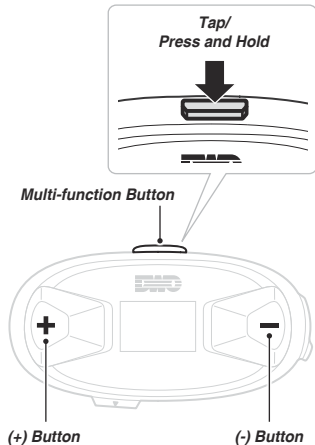
### Note:

- If your speakers are too close to your ears and your ears are uncomfortable, you can attach a Speaker Sponge to the front of the speaker.
- Make sure that the microphone is located properly close to your mouth when you wear the helmet. Adjust the direction of the microphone so that the fin side of the microphone is facing outward, away from your lips.

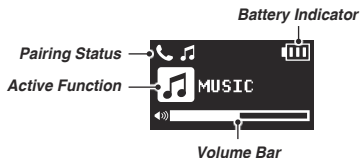


## 3 GETTING STARTED

### 3.1 Button

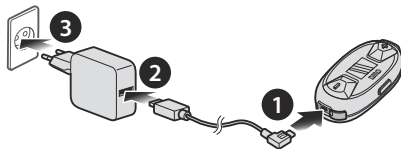


### 3.2 LCD Display



### 3.3 Charging the Headset

The headset can be charged using many common methods via the supplied USB power & data cable. Depending upon the charging method, the headset will be fully charged in about 2.5 hours.



It takes about 2.5 hours to be completely charged.

### Charging Status LCD



Charging



Fully Charged

*Note:*

- Any 3rd party USB charger can be used with Sena products if the charger is approved by either the FCC, CE, IC, or other locally approved agencies that Sena accepts.
- The headset is compatible with 5 V input USB-charged devices only.

### 3.4 Powering On and Off

- To power on the headset, press and hold the **(+) Button** and **(-) Button** for **1 second**.



- To power off the headset, tap the **(+) Button** and **(-) Button**.



### 3.5 Adjusting the Volume

You can raise or lower the volume by tapping the **(+) Button** or the **(-) Button**. Volume is set and maintained independently at different levels for each audio source (i.e., phone, intercom), even when the headset is rebooted.

### 3.6 Downloadable Software

#### 3.6.1 Cycle Gear Bluetooth Device Manager

The **Cycle Gear Bluetooth Device Manager** allows you to upgrade firmware and configure settings directly from your PC. For more information on downloading the **Cycle Gear Bluetooth Device Manager**, please visit <http://oem.sena.com/cyclegear>.

## 4 PAIRING YOUR HEADSET WITH OTHER BLUETOOTH DEVICES

Before using the headset with other Bluetooth devices for the first time, they will need to be “paired.” This enables them to recognize and communicate with one another whenever they are within range. The headset can pair with multiple Bluetooth devices such as mobile phone, MP3 player, or GPS via Phone Pairing, Second Mobile Phone Pairing. The headset can also be paired with another Sena headset.

## 4.1 Phone Pairing

There are three ways to pair the phone.

### 4.1.1 Initially Pairing the DWO 1-Lite

The headset will automatically enter the phone pairing mode when you initially turn on the headset or in the following situations:

- Rebooting after executing the **Factory Reset** feature; or
- Rebooting after executing the **Delete All Pairings** feature.

1. Press and hold the **(+) Button** and **(-) Button** for **1 second**. You will hear a voice prompt, “**Phone pairing**”.



2. On your smartphone, search for **DWO 1-Lite**.
3. Enter 0000 for the PIN. Some smartphones may not ask for PIN.

*Note:*

- *The phone pairing mode lasts for **3 minutes**.*
- *To cancel phone pairing, tap the **Multi-function Button**.*

## 4.1.2 Pairing When the DWO 1-Lite is Turned Off

1. While the headset is off, press and hold the **(+) Button** and **(-) Button** for **5 seconds**. You will hear a voice prompt, **“Phone pairing”**.



2. On your smartphone, search for **DWO 1-Lite**.
3. Enter 0000 for the PIN. Some smartphones may not ask for PIN.

## 4.1.3 Pairing When the DWO 1-Lite is Turned On

1. While the headset is on, press and hold the **Multi-function Button** for **8 seconds**. You will hear a voice prompt, **“Phone pairing”**.



2. On your smartphone, search for **DWO 1-Lite**.
3. Enter 0000 for the PIN. Some smartphones may not ask for PIN.

## 4.2 Second Mobile Phone Pairing

1. To enter the **Configuration menu**, press and hold the **Multi-function Button** for **12 seconds** until you hear a voice prompt, “**Configuration menu**”.
2. Tap the **(+) Button** until you hear a voice prompt, “**Second mobile phone pairing**”.



3. On your smartphone, search for **DWO 1-Lite**.
4. Enter 0000 for the PIN. Some smartphones may not ask for the PIN.

## 5 MOBILE PHONE USAGE

### 5.1 Using Phone Functions

- **Answering a call**  
Tap the **Multi-function Button**.
- **Ending a call**  
Tap the **Multi-function Button**.
- **Rejecting a call**  
Press and hold the **Multi-function Button** for **2 seconds**.
- **Make a Call with Voice dialer**  
Press and hold the **Multi-function Button** for **3 seconds** in stand-by mode to activate the voice dialer of your mobile phone.



Incoming Call



Make a Call



Make a Call with  
Voice Dialer



Conversation

## 5.2 Speed Dialing

### 5.2.1 Assigning Speed Dial Presets

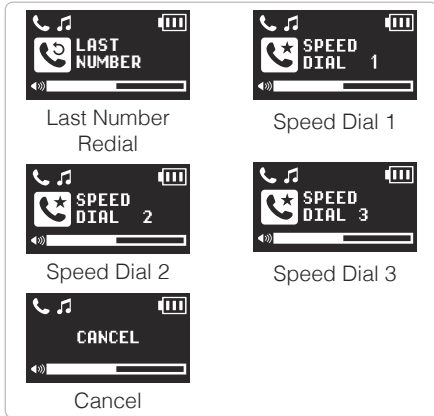
You need to assign speed dial numbers before using the speed dial. Speed Dial Presets could be assigned in the configuration menu.

### 5.2.2 Using Speed Dial Presets

1. Press and hold the **(+) Button** for **3 seconds** and you will hear a voice prompt, “**Speed dial**”.



2. Tap the **(+) Button** or the **(-) Button** to navigate between the menus. You will hear prompts for each menu item.
3. Tap the **Multi-function Button** to select a voice menu among the followings:



4. To redial the last number called, tap the **Multi-function Button** when you hear a voice prompt, **"Last number redial"**.
5. To call one of the speed dials, tap the **Multi-function Button** when you hear a voice prompt, **"Speed Dial (#)"**.
6. If you want to exit the speed dial immediately, tap the **(+) Button** or the **(-) Button** until you hear a voice prompt, **"Cancel"**, and tap the **Multi-function Button**.

## 6 STEREO MUSIC

- **Play/Pause music**

Press and hold the **Multi-function Button** for **1 second**.

- **Track forward/back**

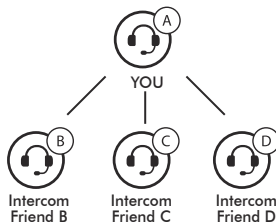
Press and hold the **(+) Button** or the **(-) Button** for **1 second**.



## 7 BLUETOOTH INTERCOM

### 7.1 Intercom Pairing

The headset can be paired with up to three other **Sena** headsets for Bluetooth intercom conversation.



1. Press and hold the **Multi-function Button** of the headset A and B for **5 seconds** until you hear a voice prompt, **“Intercom pairing”**.

- Tap the **Multi-function Button** on either headset and wait until the intercom connection is automatically established.



- Repeat steps 1 and 2 to pair with **Intercom Friends C & D**.
- The intercom pairing queue is **'Last-Come, First-Served'**. If a headset has multiple paired headsets for intercom conversations, the last paired headset is set as **first intercom friend**. The previous intercom friend becomes **second intercom friend**, and **third intercom friend**.

### Last-Come, First-Served



YOU

Intercom  
Friend 1

YOU

Intercom  
Friend 1Intercom  
Friend 2

YOU

Intercom  
Friend 1Intercom  
Friend 2Intercom  
Friend 3

## 7.2 Two-way Intercom

You can start/end an intercom conversation with one of any intercom friends by tapping the **Multi-function Button**.



Intercom  
Friend 1

= Tap the **Multi-function Button**.



Intercom  
Friend 2

= Double tap the **Multi-function Button**.



Intercom  
Friend 3

= Triple tap the **Multi-function Button**.

### 7.2.1 HD Intercom

**HD Intercom** enhances the two-way intercom audio from normal quality to HD quality.

## 8 GENERAL SETTINGS

### 8.1 Function Priority

The headset operates in the following order of priority:

(highest)	Mobile phone
	Bluetooth Intercom
(lowest)	Bluetooth stereo music

A lower priority function is always interrupted by a higher priority function.




### 8.2 Configuration Menu




You can set the configuration of the headset by the voice menu instruction described below.

1. Press and hold the **Multi-function Button** for **12 seconds** until you hear a voice prompt, “**Configuration menu**”.



2. Tap the **(+) Button** or the **(-) Button** to navigate between the menus. You will hear voice prompts for each menu item.
3. You can enable/disable the feature or execute the command by tapping the **Multi-function Button**.

Configuration Setting	Enable/Disable or Execute
 <p>Second Mobile Phone Pairing</p>	None
 <p>Speed Dial</p>	Execute
 <p>Voice Prompt</p>	Enable/Disable

Configuration Setting	Enable/Disable or Execute
 <p>Delete All Pairings</p>	Execute
 <p>Factory Reset</p>	Execute
 <p>Exit Configuration</p>	Execute

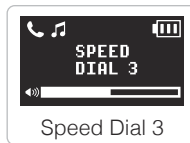
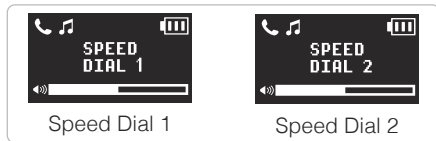
## 8.2.1 Assigning Speed Dial

1. To assign a phone number as a speed dial, tap the **(+) Button** until you hear a voice prompt, **“Speed dial”**.



2. Tap the **Multi-function Button**, and you will hear a voice prompt, **“Speed dial one”** and **“Phone connected”**.

Tap the **(+) Button** or **(-) Button** to select one of three speed dial numbers by hearing a voice prompt, **“Speed dial (#)”**.



3. Call a phone number you want to assign and you will hear a voice prompt, **“Save speed dial (#)”**. The phone number is automatically assigned to the selected speed dial number. Then the phone call will hang up immediately.
4. To exit the menu, tap the **(+) Button** or **(-) Button** until you hear a voice prompt, **“Cancel”**, and tap the **Multi-function Button** to confirm. You will then hear a voice prompt, **“Cancel”**.



## 8.2.2 Voice Prompt (Default: Enable)

You can disable voice prompts by configuration setting, but the following voice prompts are always on.

- Voice prompts for configuration setting menu
- Voice prompts for factory reset
- Voice prompts for speed dial

## 8.2.3 Delete All Pairings

Delete all Bluetooth pairing information.

## 8.3 Firmware Upgrades

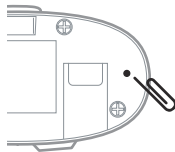
The headset supports firmware upgrades. You can update the firmware using the **Cycle Gear Bluetooth Device Manager**. Please visit the website at <http://oem.sena.com/cyclegear> to check the latest software downloads.

# 9 TROUBLESHOOTING

## 9.1 Fault Reset

When the headset is not working properly, you can easily reset the unit:

1. Locate the **Pinhole Fault Reset Button** below on the back of the main unit.
2. Gently insert a paperclip into the hole and tap the **Pinhole Fault Reset Button** with light pressure.



3. The headset will shut down.

*Note: **Fault Reset** will not restore the headset to factory default settings.*

## 9.2 Factory reset

If you want to restore the headset to factory default settings, use the **Factory Reset** in the configuration menu. The headset automatically restores the default settings and turns off.

**Copyright © 2021 Sena Technologies, Inc.**  
**All rights reserved.**

© 1998–2021 Sena Technologies, Inc. All rights reserved.  
Sena Technologies, Inc. reserves the right to make any changes and improvements to its product without providing prior notice.