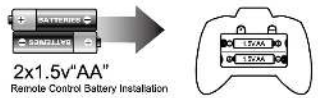




Battery Installation & Charging

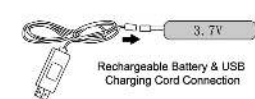
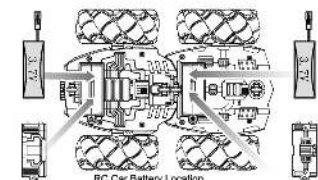
Remote Control

Use included Phillips screwdriver to loosen screw located on the battery compartment cover.
Remove battery cover using integrated locking tab. Insert 2 AA batteries according to the polarity graphic inside the battery compartment. Replace the cover and tighten the screw.
Repeat the above process for the second remote-control.



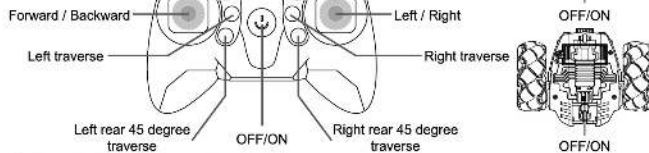
Car

Make sure the On/Off switch is in the Off position on both of the cars.
Use included Phillips head screwdriver to loosen the safety screw located on the battery compartment cover of the front car.
Remove battery cover by lifting the screw tab.
Remove rechargeable battery from the battery compartment, depress battery connector safety lock, and separate wire connectors.
Repeat the above steps for the back car.
Plug the USB charging cable into a USB port or a USB AC adaptor and insert the adaptor into an electrical outlet.
Connect battery connectors to the connectors on the USB cable.
The red light on the charging cable will light when charging. When batteries are fully charged, the light will turn off.
When batteries are fully charged, disconnect battery connectors from the USB charging cable, and unplug the cable from the power source.
Reconnect each battery to the battery cables in the battery compartment, reinsert batteries, replace battery compartment cover, and tighten the screws.



WARNINGS:

Do not attempt to charge swelling, leaking, or broken batteries.
Do not overcharge the batteries. When batteries are fully charged, immediately remove them from the charger.
Only use the included USB charger to recharge the car batteries.
Do not charge batteries near flammable materials or leave unattended during charging.
Charging should always be supervised by an adult.



Linking the Remote Controls To Cars

When cars are connected:

Note: For proper functioning of your car, always turn the remote-control power on before turning on the power to either car.

Press the power button on your remote control. The red indicator light will flash until the car is connected.

2. Move both power buttons on the bottom of the cars to the On position. The red indicator light on the remote will stop flashing and remain solid On to indicate that the car and remote are linked.

When cars are separated:

NOTE: Your vehicle and remote use 2.4 GHz technology, allowing both vehicles to be used separately in the same room without interference.

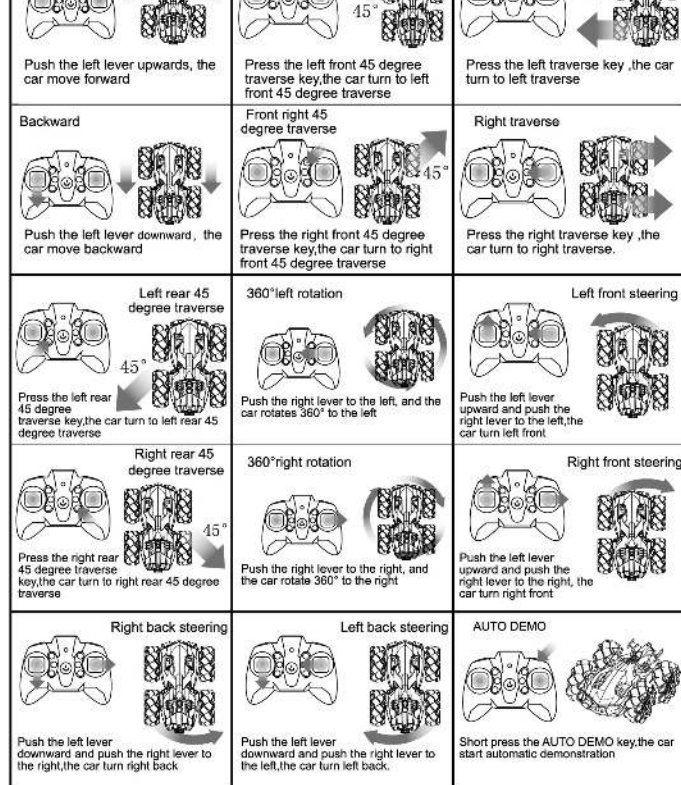
To do so, activate and pair one vehicle and one remote, then do the same for the other vehicle/remote repeating the steps above. The remote will preferentially match the car that is turned on first. If both cars are turned on at the same time, then priority will be given to the front car.

Turning off Remote Control

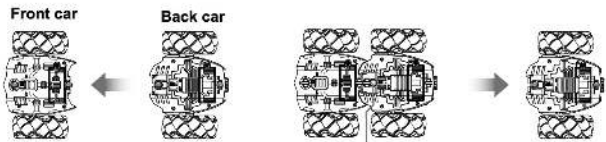
To turn off your remote control press and hold the power button until the red light turns off.

Care and maintenance

Remove the batteries when not in use for extended periods.
Wipe the vehicle clean with a damp cloth.
Do not expose the toy to extreme heat.
Do not immerse the toy in water.
If the wheels are dirty and move inflexibly, inspect, and remove debris.

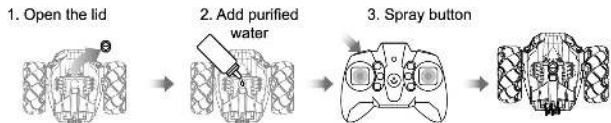


Separating & Combining Car



To separate your cars, locate the white connection release button on the bottom of your car adjacent to the center guide wheels.
Depress the release button and pull the front and back cars apart.
To combine the cars, align the connector plug and push cars together until they click and lock.

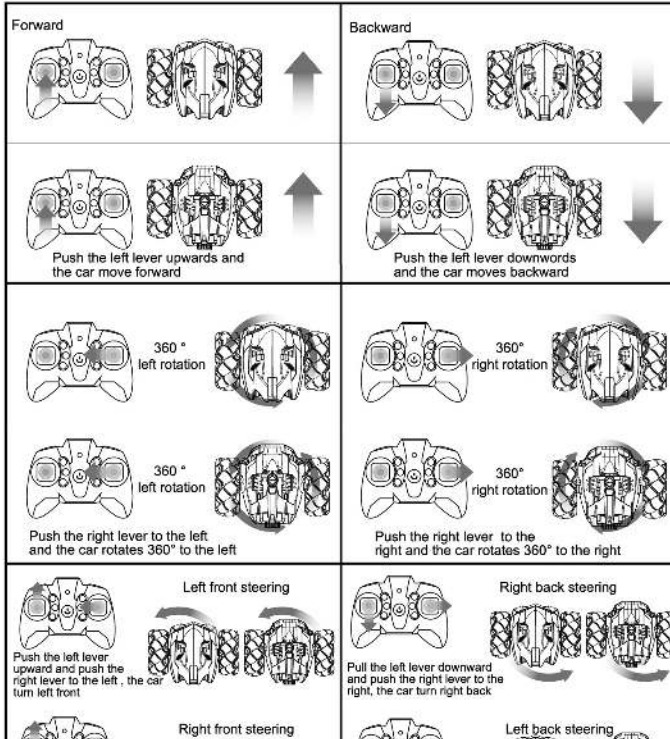
Misting Feature: Only the rear car has the misting function.



- Fill the included water fill bottle with purified water.
- Remove the water reservoir cap from the top center of the rear car.
- Place the water fill bottle nozzle in the spray reservoir hole and squeeze the water bottle gently to fill.
- Remove the water bottle and replace the cap.
- Locate the spray button on the front left of the remote control linked to the rear car.
- Press the button once to activate the spray feature. Press a second time to deactivate spray.

Note: With a full water reservoir, the spray feature will function for about 4 – 5 minutes.

Single Car Remote Control Functions & Stunts



WARNINGS

Do not operate in heavy rain, water, mud puddles, etc.
To avoid injury, do not grab or touch wheels when the toy is moving.
Not suitable for children under 3 years due to detachable small parts.
Installation of the battery should ALWAYS be done by an adult.
Don't pick up the vehicle while in motion.
Don't put your vehicle or transmitter near any source of heat.
Don't operate your vehicle in dangerous places.
Avoid driving on sand and loose gravel.
Do not disassemble the vehicle or remote control.
If the vehicle is damaged and any broken parts are exposed, the vehicle should not be used.
Watch for and avoid obstacles.
For best results, operate on hard flat surfaces. Full Functionality is not available on carpets.



BATTERY SAFETY

Do not mix old and new batteries.
Do not swallow batteries.
For best results, use alkaline batteries.
Do not mix Alkaline, Standard (Carbon Zinc) or Rechargeable (Nickel Cadmium) or (Nickel Metal Hydride) batteries.
Batteries must be recycled or disposed of properly according to local, state, or federal regulations.

FCC INFORMATION

This device complies with part 15 of the FCC Rule. Operation is subject to the following two conditions: (1) This device may not cause harmful interference, and (2) this device must accept any interference received, including interference that may cause undesired operation.
FCC ID: 2AL75-TK20220221

30 DAY LIMITED WARRANTY

FILIPO GROUP warrants to the original purchaser, when used in North America only, that this product shall be free of defects in material and workmanship. This warranty applies within 30 days of the original purchase with normal home use. This warranty does not apply for commercial use of this product. Use outside of North America is not covered by this warranty.
During the warranty period, we will at our option, repair or replace this product without charge, which shall be the consumer's sole remedy. ALL RETURNS must be accompanied by a Return Authorization Number, which is issued by the Customer Service Department of Filipo Group. Please contact Customer Service BEFORE returning any item. Once you have obtained a Return Authorization Number, the product must be returned with a clear copy of the proof of purchase, showing date of purchase, postage and insurance prepaid to:

Filipo Group
613 First Street
La Salle, IL 61301