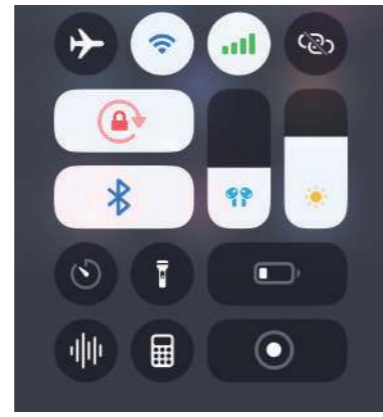


ILED COLOR Instruction Manual

1. Turn on Bluetooth and location



Scan the QR code below to download and install on your phone, or enter the Google Play/APP Store and search for "iledcolor" to download



Scan the QR code to download the APP

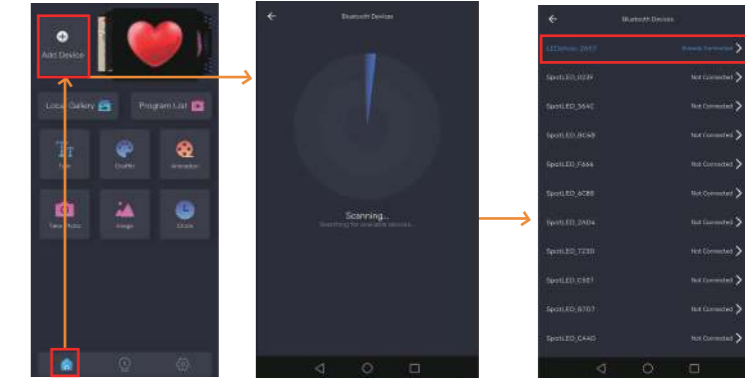
2. Download the APP

After scanning the code, click on the corresponding mobile phone system, and then click on the upper right corner "...", and select Open in the browser to select the corresponding system installation



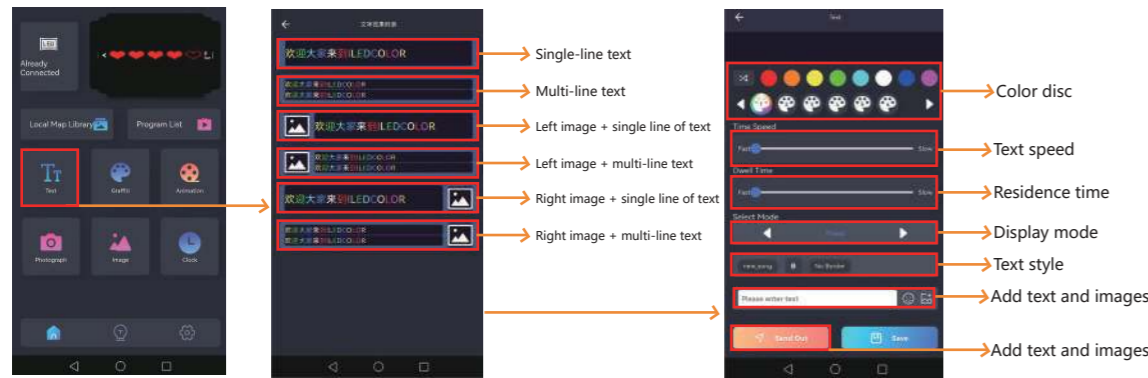
3. Go to the home page

Power on the device, the code appears on the screen, open the APP, click to find the device, and connect the corresponding product code



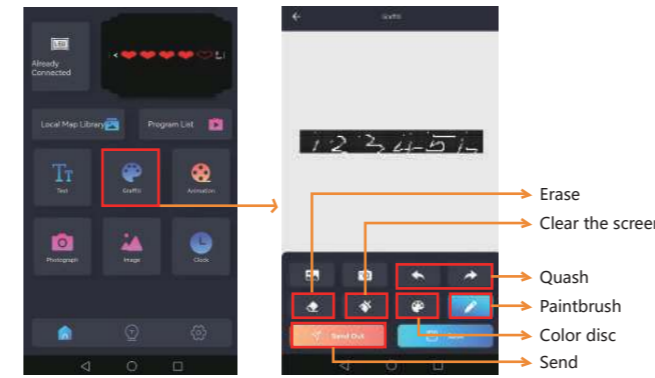
4. Text function

Click Text to add text



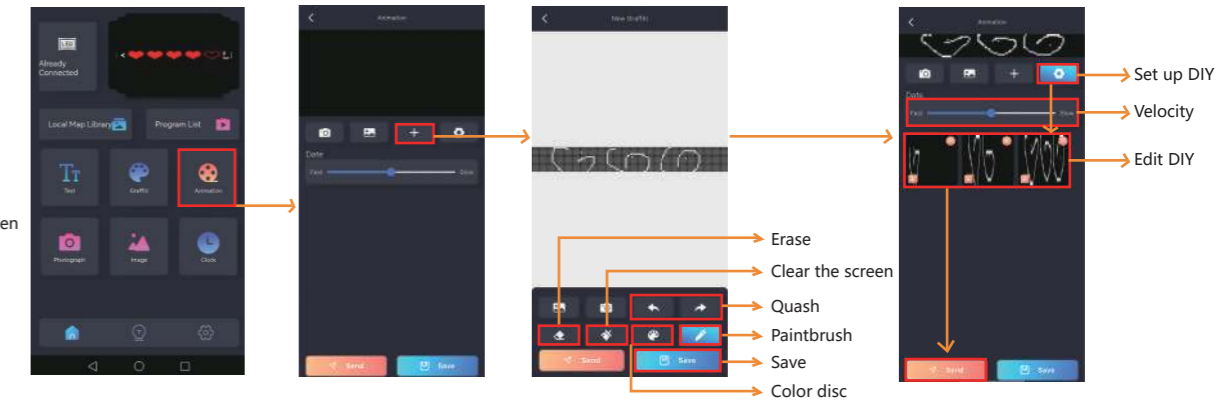
5. Graffiti function

Click on the doodle to add a doodle DIY



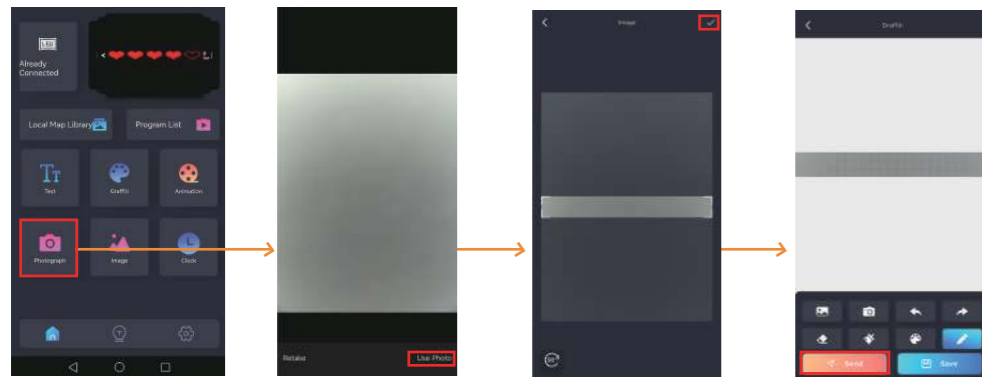
6. Animation function

Click on the animation, add multiple DIY and save, you can form a continuous frame animation in the list, and click play to display the animation



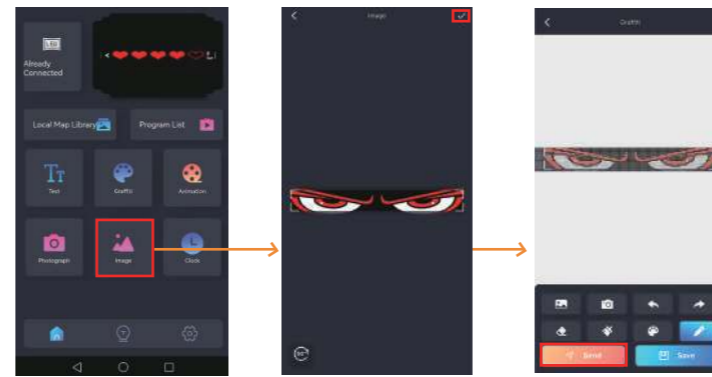
7. Photo function

Click on the photo function to upload a live photo



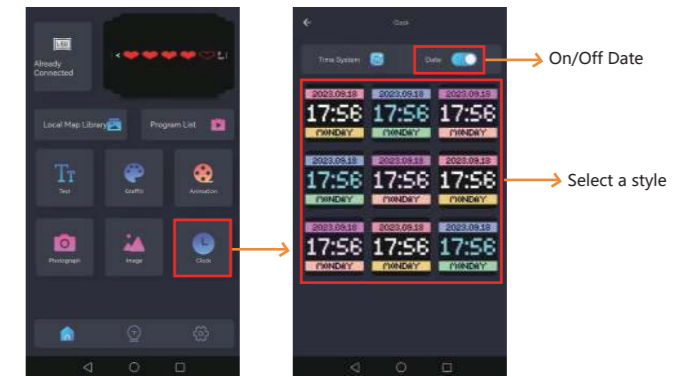
8. Upload image function

Click on the image function to upload an image



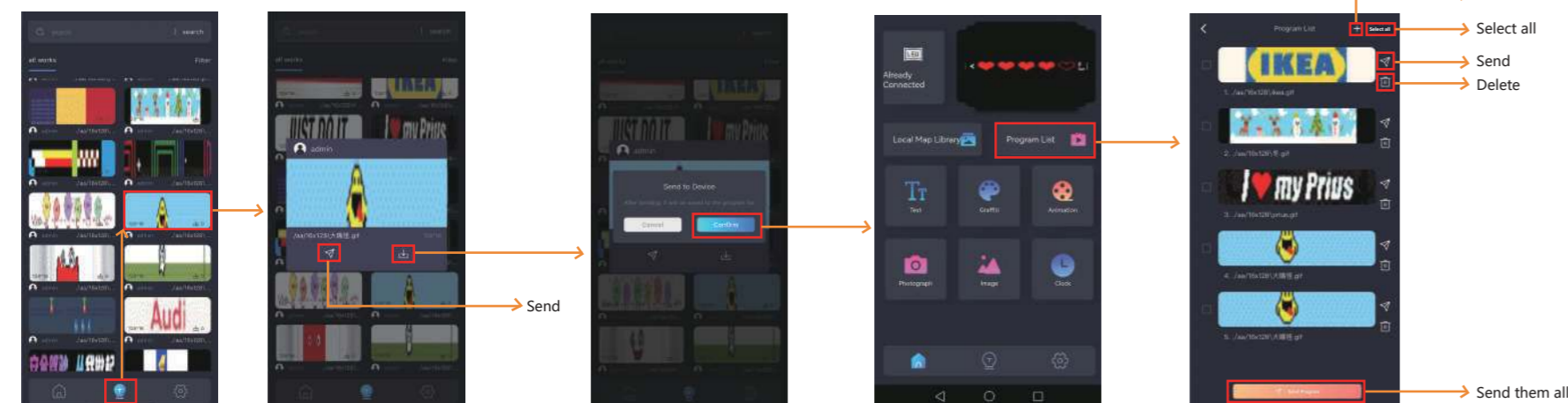
9. Clock function

Click on the clock function to display the clock



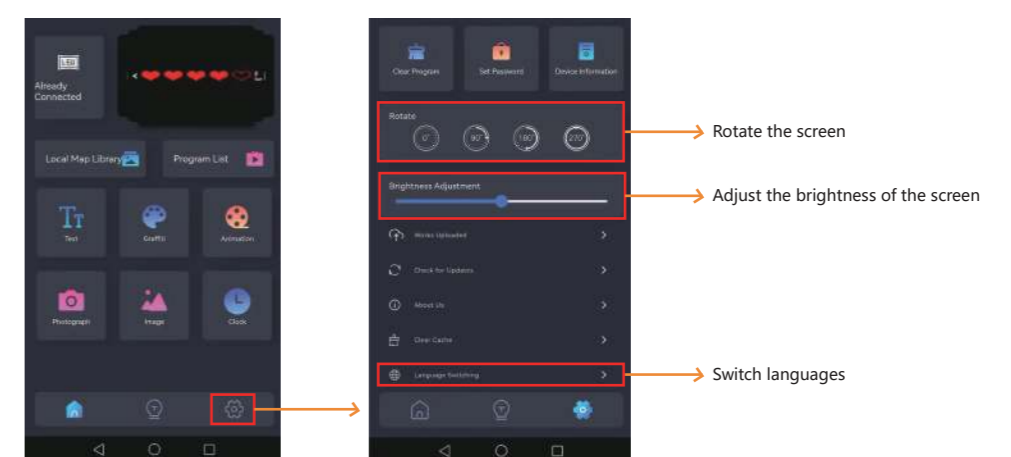
10. Animation Square

Click on the animation square, a variety of materials can be selected, and click save to save to the program list



11. More features

Tap More features to adjust screen brightness, switch languages, and more



FCC STATEMENT

NOTE: This equipment has been tested and found to comply with the limits for a Class B digital device, pursuant to Part 15 of the FCC Rules. These limits are designed to provide reasonable protection against harmful interference in a residential installation.

This equipment generates uses and can radiate radio frequency energy and, if not installed and used in accordance with the instructions, may cause harmful interference to radio communications. However, there is no guarantee that interference will not occur in a particular installation. If this equipment does cause harmful interference to radio or television reception, which can be determined by turning the equipment off and on, the user is encouraged to try to correct the interference by one or more of the following measures:

Reorient or relocate the receiving antenna.

Increase the separation between the equipment and receiver.

Connect the equipment into an outlet on a circuit different from that to which the receiver is connected.

Consult the dealer or an experienced radio/TV technician for help.

Changes or modifications not expressly approved by the party responsible for compliance could void the user's authority to operate the equipment.

RF warning statement:

The device has been evaluated to meet general RF exposure requirement. The device can be used in portable exposure condition without restriction.

This device complies with part 15 of the FCC Rules. Operation is subject to the following two conditions:

(1) This device may not cause harmful interference, and

(2) this device must accept any interference received, including interference that may cause undesired operation.