

SIP Industrial Products Limited
Gelders Hall Road
Shepshed
Loughborough
Leicestershire
LE12 9NH
United Kingdom

Tempest CW-P 160AX / 08984
Tempest CW-P 215AX / 08985
Tempest CW-P 225AX / 08986



For help or advice please
contact your distributor, or sip
directly on: Tel.: 01509 500400
Email: sales@sip-group.com or
technical@sip-group.com
www.sip-group.com

sip
SIP INDUSTRIAL

CONTENTS

Page No.	Description
4.	Safety Instructions
7.	Guarantee
8.	Your item
9.	Technical Specifications
10.	Assembly Instructions
13.	Operating Instructions
18.	Maintenance
21.	Troubleshooting
22.	Exploded Drawing & Part List 08984 08985
24.	Exploded Drawing & Part List 08986
26.	UK - Declaration Of Conformity
27.	EU - Declaration Of Conformity

SAFETY INSTRUCTIONS



Danger / Caution: This picture indicates risk of personal injury and/ or the possibility of damage.



Warning: This picture indicates risk of electrical injury or damage!



Note: This picture indicates supplementary information.



Important: Please read the following instructions carefully, failure to do so could lead to serious personal injury and / or damage to the item.

When using this item, basic safety precautions should always be followed to reduce the risk of fire, electric shock and personal injury.

Read all these instructions before operating the machine and save this user manual for future reference.

The warnings and cautions mentioned in this user manual can not cover all possible conditions and situations that may occur. It must be understood by the operator that common sense and caution are factors which cannot be built into this product, but must be applied.

This item should not be modified or used for any application other than that for which it was designed.

This pressure washer was designed to supply high pressure water for the purpose of cleaning mainly inanimate objects.

If you are unsure of its relative applications do not hesitate to contact us and we will be more than happy to advise you.

General Safety Instructions

- **KNOW YOUR PRESSURE WASHER:** Read and understand the owner's manual and labels affixed to the machine. Learn its applications and limitations, as well as the potential hazards specific to it.
- **KEEP WORK AREA CLEAN:** Cluttered and dark areas invite accidents.

SAFETY INSTRUCTIONS

- **DO NOT USE THE PRESSURE WASHER IN DANGEROUS ENVIRONMENTS:** Provide adequate space surrounding the work area. Do not use in environments with a potentially explosive atmosphere.
- **KEEP CHILDREN AND UNTRAINED PERSONNEL AWAY FROM THE WORK AREA:** All visitors should be kept at a safe distance from the work area.
- **STORE THE PRESSURE WASHER SAFELY WHEN NOT IN USE:** The pressure washer should be stored in a dry location, drained of any water and fuel, out of the reach of children and in a frost free environment.
- **USE SAFETY CLOTHING / EQUIPMENT:** Use CE approved safety glasses during operation. Loose clothing or jewellery may become entangled in moving components, causing equipment damage and/or personal injury.
- **STAY ALERT:** Always watch what you are doing and use common sense. Do not operate the pressure washer when you are tired or under the influence of alcohol or drugs.
- **CHECK FOR DAMAGED PARTS:** Before every use of the pressure washer, any damage found should be carefully checked to determine that it will operate correctly, safely and perform its intended function. Any damaged, split or missing parts that may affect its operation should be correctly repaired or replaced by an authorised service centre unless otherwise indicated in this instruction manual.
- **KEEP ALL COVERS / PANELS IN PLACE:** Never operate the pressure washer with any covers / panels removed, this is extremely dangerous.
- **USE ONLY RECOMMENDED ACCESSORIES:** Consult this user manual, your distributor or SIP directly for recommended accessories. Follow the instructions that accompany the accessories. The use of improper accessories may cause hazards and will invalidate any warranty you may have.
- **HAVE YOUR PRESSURE WASHER REPAIRED BY A QUALIFIED PERSON:** The pressure washer is in accordance with the relevant safety requirements. Repairs should only be carried out by qualified persons using original spare parts, otherwise this may result in considerable danger to the user.
- Stop operation immediately if you notice anything abnormal.
- Be sure that the Pressure washer is placed on a flat level surface prior to and during operation. The Pressure washer must not slide or shift during operation
- Keep all untrained persons away from the Pressure washer during operation.
- Be aware of moving parts and hot surfaces that occur during normal operation of this Pressure washer.
- Never operate the Pressure washer with damaged, broken or missing parts, or with any guards or covers removed.
- Do not refill the fuel tank while the engine is running. Always allow engine to cool before refuelling and be careful to prevent fuel spillage during refills. Also make sure the fuel tank cap is securely in place before starting the engine.
- Never refuel whilst smoking or in the vicinity of a naked flame, or other sources

SAFETY INSTRUCTIONS

of ignition. Should any fuel make contact with your clothes; change and wash them immediately. If any fuel makes contact with your skin wash with soap and water immediately.

- Always operate this Pressure washer in a well ventilated area to reduce the risk of suffocation.
- Never cover the Pressure washer or restrict the exhaust or air flow in any way.
- Always ensure that the Pressure washer is at least 1m (3ft) away from any walls or buildings to allow correct air flow.
- Never drag the pressure washer with the hose in order to move it.
- Only connect the pressure washer to a cold water supply; never connect to a hot water supply.
- To prevent accidental water spray, the pistol trigger should be placed in the locked position when not in use.
- When not in use, always ensure that the pressure washer is fully drained of any water and stored in a warm environment to protect it from frost damage.
- Never direct the flow of water at other persons, animals, electrical, electronic items or towards the pressure washer itself.
- Keep hands and other body parts away from high pressure water stream as water pressure will cause severe bodily harm.
- Do not stand or sit on the pressure washer, it was not designed for this purpose
- Never run the pressure washer without a clean water supply connected to it.
- Never run the pressure washer for more than 30 seconds without depressing the trigger.
- Do not operate this pressure washer in temperatures below 5°C. Operating pressure washer under the temperature of 5°C may cause damage to pump and other pressure washer parts.
- Do not hold the water outlet (nozzle) too close to the surface being cleaned or damage could occur.
- Only use recommended detergents for pressure washers. Using detergents not specifically recommended for use with pressure washers can cause damage to pump and other pressure washer components.



Danger / Caution: Exhaust fumes produced during normal operation are poisonous. Do not operate this pressure washer in enclosed areas.



Danger / Caution: The fuel used to run this pressure washer (unleaded petrol) is highly flammable. Never re-fuel the pressure washer whilst it is still running.

GUARANTEE

This item is covered by a 24 month parts and labour warranty covering failure due to manufacturers defects. This does not cover failure due to misuse or operating the item outside the scope of this manual - any claims deemed to be outside the scope of the warranty may be subject to charges Including, but not limited to parts, labour and carriage costs, failure to regularly clean your item will shorten its working life and reduce performance.

This guarantee does not cover consumables such as filters, spark plugs, oil, high pressure hoses, pistols, lances, nozzles etc.



NOTE: Proof of purchase will be required before any warranty can be honoured.

YOUR ITEM



*This picture makes reference to the model 08986. Some of the features may not be available on your model.

Ref.	Description	Ref.	Description
1.	Rubber feet	9.	Nozzles
2.	Detergent Tank	10.	Pistol
3.	Recoil Assembly	11.	Handle
4.	Choke and fuel tap levers	12.	Suction hose assembly
5.	Fuel Tank	13.	Spark plug
6.	Air Filter	14.	Pump
7.	Exhaust system	15.	On/Off Switch
8.	High Pressure Hose	16.	Wheel

TECHNICAL SPECIFICATION

Model No.	08984	08985	08986
Power	6.5 hp	7 hp	
Engine Type	4-stroke, single cylinder, air cooled, E5, EURO V		
Fuel Type	Petrol		
Pump	Axial - Aluminium Head Fixed Pressure	Axial - Brass Head Adjustable Pressure	
Flow Rate	402 l/hr	522 l/hr	540 l/hr
Water Pressure (Max / Rated)	162 Bar / 135 Bar	216 Bar / 180 Bar	225 Bar / 195 Bar
Detergent Tank	No		Yes - 1.9 Litre
Starting System	Recoil system		
Hose Length	7.5 mtr		
No. of Nozzles	5		
Fuel Tank Capacity	3.6 l		
Oil Type	10W30		
Engine Oil Capacity	0.5L		
Sounds (LwA)	104dB	112dB	112dB
Weight	25kg NW / 27 kg GW	25kg NW / 27 kg GW	31kg NW / 33kg GW

**** Vibration Magnitude:-**

08984: Main Handle $2.7m/s^2$: Pistol Handle $3.2m/s^2$ - $k = 1.5m/s^2$

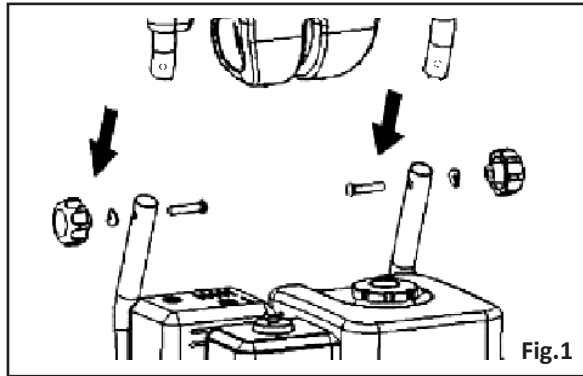
08985: Main Handle $4.6m/s^2$: Pistol Handle $4.6m/s^2$ - $k = 1.5m/s^2$

08984: Main Handle $4.6m/s^2$: Pistol Handle $4.6m/s^2$ - $k = 1.5m/s^2$

ASSEMBLY INSTRUCTIONS

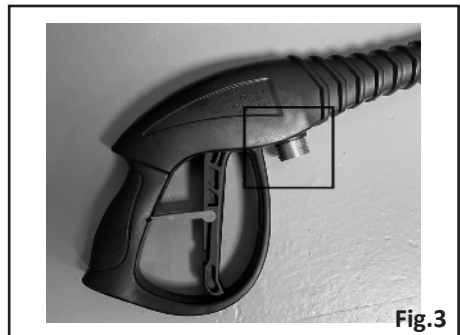
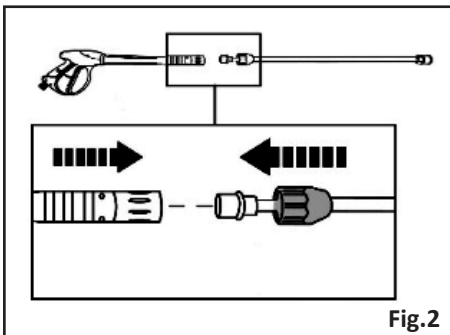
FITTING THE HANDLE TO THE FRAME

1. Slide the handle assembly over the main frame. Fig.1
2. Ensure that the holes line up and secure in place with the bolt, washer and hand wheel as shown.



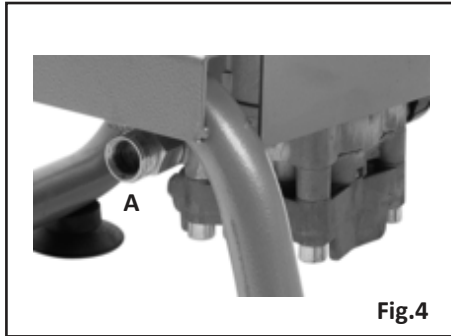
CONNECTING THE HOSE / PISTOL / LANCE

1. Push the lance into the fitting on the pistol.
2. Screw the fitting on the pistol to secure the pistol / lance together. Fig.2
3. Screw the hose fitting onto the pistol.
4. Tighten the fitting on the hose with a spanner or similar (not supplied) to secure. Fig.3



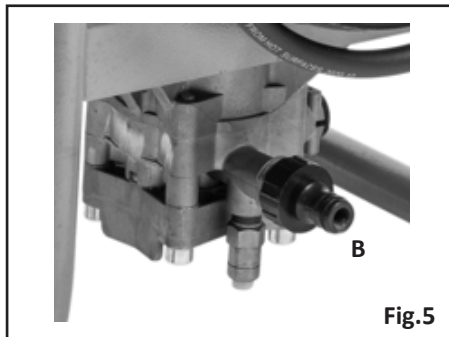
ASSEMBLY INSTRUCTIONS

5. Connect the opposite end of the hose onto the water outlet on the pressure washer pump. (A)
6. Tighten the hose fitting to secure.



CONNECTING TO A WATER SUPPLY

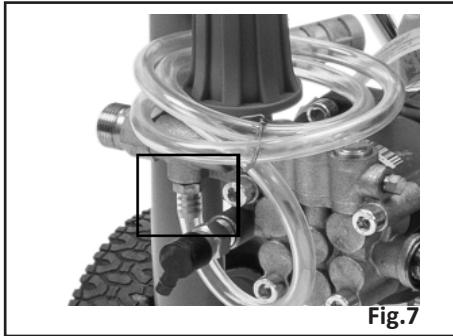
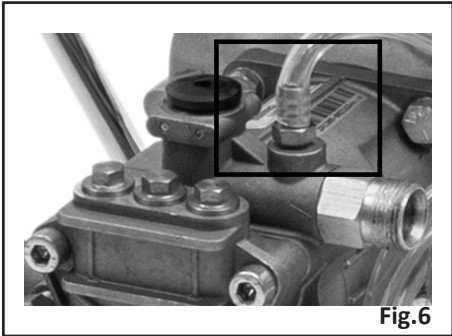
- The pressure washer is supplied with a quick-release type water inlet bayonet (B).
- Connect your water hose using a quick connect coupler.



ASSEMBLY INSTRUCTIONS

FITTING THE DETERGENT HOSE

Simply push the detergent hose over the detergent inlet. Fig.6 & 7. (Where applicable).



OPERATING INSTRUCTIONS



Danger / Caution: Before you operate the pressure washer ALWAYS check that no damage is present and that everything that should be, is tight and secure.



Danger / Caution: Hot Surfaces. Always ensure that the pressure washer is turned off and allowed to fully cool before any refuelling or maintenance procedures are carried out.

FILLING THE ENGINE WITH OIL / CHECKING THE OIL LEVEL

This pressure washer is shipped from the factory without oil. Make sure you check and fill it before using the machine. Otherwise, warranty will be invalidated.

- Engine oil is a major factor affecting engine performance and service life. Non-detergent oils and vegetable oils are not recommended.
- Use premium quality 10W30 4-stroke engine oil.
- Do not add commercial additives to the recommended oil and do not mix petrol with the oil.
- Oil 10W-30 is recommended for general, all-temperature use.
- Check the oil level in the crankcase of the engine before each start.
- The oil level should be positioned between the lower and upper level marks on the oil filler cap / dip stick.



NOTE: When checking the oil level. Always ensure that the pressure washer is placed on a firm level surface.



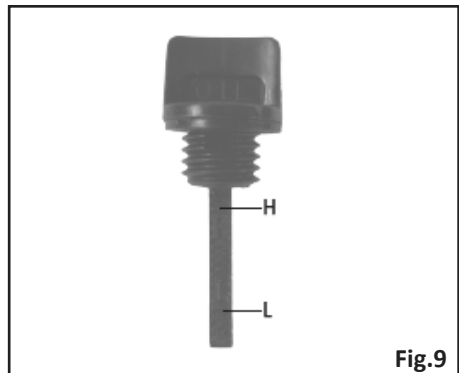
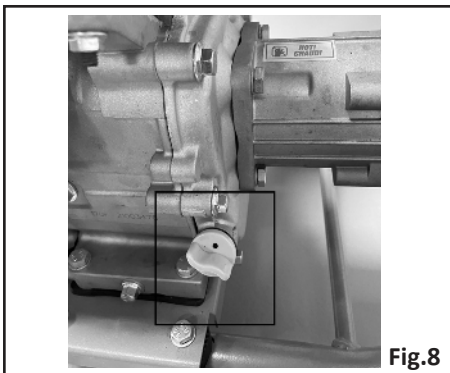
Danger / Caution: Be sure oil level is maintained. Failure to do so will invalidate any warranty you may have.

OPERATING INSTRUCTIONS

To fill the machine with oil, follow the next steps.

- Ensure that the pressure washer is on a flat level surface.
- Remove the filler cap / dip stick by turning it anti-clockwise. Fig.8
- Slowly pour the oil into the crankcase.
- Check the oil level by pushing the filler cap / dip stick back into its hole up to the bottom of the threads (do not screw the cap in).
- Once the oil level is between the upper (H) and the lower (L) marks on the oil gauge (see below), refit it and turn clockwise to fully tighten. Fig.9

The oil level should be checked every 8 hours or daily. Moreover, the oil should be changed after the first 5 hours of operation; thereafter change the oil after 50 hours of operation or yearly (after 25 hours if the pressure washer is operated under constant heavy loads or in high ambient temperatures).



FUELLING / RE-FUELLING THE PRESSURE WASHER

To re-fuel the pressure washer:

1. Remove the fuel cap.
2. Carefully pour the petrol into the tank to the desired level and replace the fuel cap.
3. Remove any spilt fuel from the pressure washer and surrounding area to avoid any risk of fire.

The pressure washer should now be ready to run.

OPERATING INSTRUCTIONS



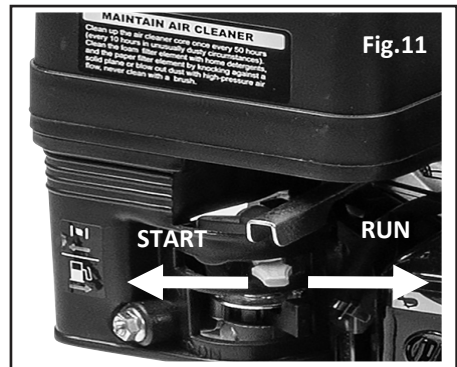
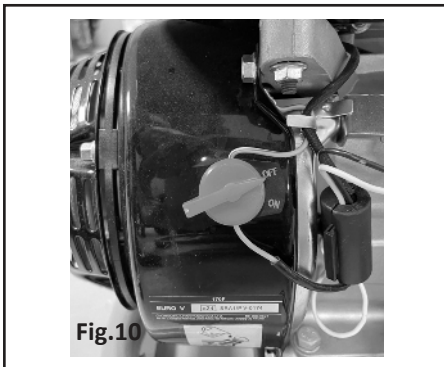
NOTE: Never overfill the fuel tank, leave a small air gap at the top.



Danger / Caution: Petrol is highly flammable. Never re-fuel the pressure washer whilst it is running, allow the machine to cool down. Do not re-fuel near naked flames or other possible ignition sources. Re-fuel in a well ventilated.

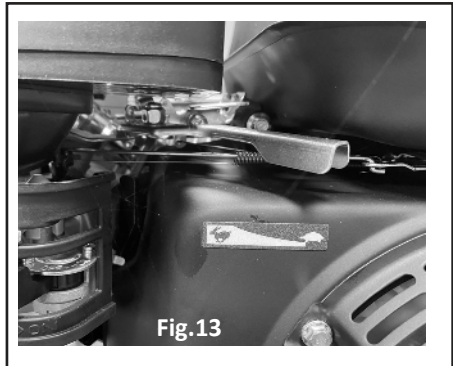
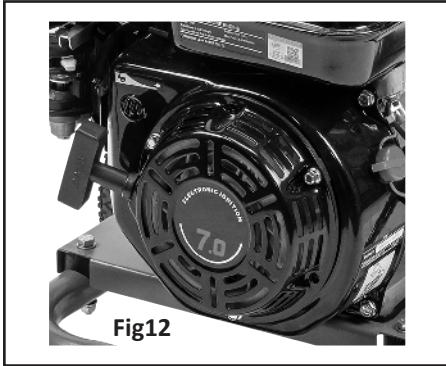
STARTING THE ENGINE

1. Turn the main engine switch to the on position. Fig.10
2. Move the choke lever to the "Start" position. Fig.11
3. Grip the recoil start handle and slowly pull the cord until it engages, then pull sharply until the engine starts. Once the engine has started slowly release the recoil and allow the cord to be retracted. Fig.12
4. Once the engine is running and warm enough, slide the choke lever out to the 'RUN' position. Fig.11
5. Position the level to full throttle (rabbit position) in order to get the maximum pressure. Fig.13



NOTE: Always set the lance to low pressure and hold the pistols trigger 'open' every time the engine is started. This will ensure that the operator is not trying to start the engine against back pressure.

OPERATING INSTRUCTIONS



i NOTE: The choke may not be needed if the engine is already warm or the ambient temperature is hot.

i NOTE: It may take a few sharp pulls to get the engine started.

STOPPING THE PRESSURE WASHER

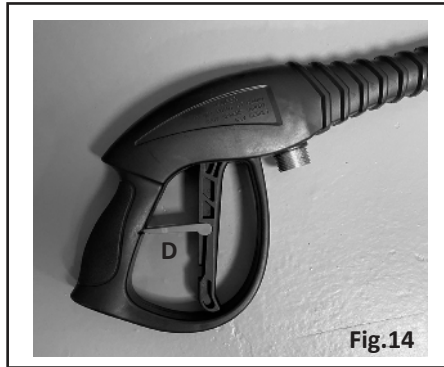
1. Turn the engine switch to the off position. Fig.10
2. Remove the water supply.
3. Press the trigger to allow as much water as possible out of the system

i NOTE: Hold the trigger open and blow compressed air through the water inlet until all of the water has been removed from the system.

OPERATING INSTRUCTIONS

OPERATING THE PISTOL / LANCE FUNCTIONS

The trigger can be locked to stop it functioning unintentionally by operating lever D.
Fig.14



Nozzle selection

Choose the correct nozzle according to your required spray pattern (0°,15°,25°,40°) or detergent nozzle (the one with the larger orifice) and connect by quick coupling.



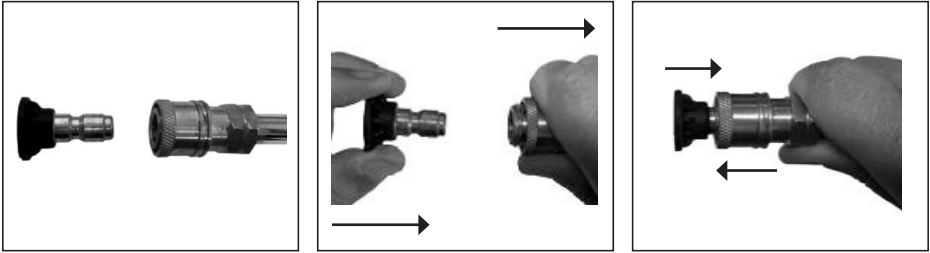
NOTE: When changing the nozzles, always switch off the machine, release the pressure and point to a safe direction. Ensure that the trigger is in the “off” position & locked when changing nozzles.

The low pressure (black) nozzle should be fitted to when starting the engine.

Pull back on the quick coupler connection at the end of the lance (see below, left). Push the nozzle into the quick coupler connection and allow the connector to spring back; This will hold the nozzle in position (below, right).

Once the engine is running, follow these instructions to fit the required nozzle.

OPERATING INSTRUCTIONS



Using detergent

Place the filter end of the detergent hose into the detergent container (not supplied). The detergent will flow through the hose/pistol/lance when the trigger is pressed.

	<p>NOTE: Always use chemicals cleaning agents recommended by the manufacturer.</p>
--	--

	<p>NOTE: Always turn off the pressure washer and allow to fully cool before carrying out any maintenance procedures.</p>
--	--

MAINTENANCE

REPLACING THE ENGINE OIL

Replace the engine oil after the first 5 hours of operation, then every 50 hours, or yearly, whichever is first, thereafter.

1. Turn the oil filler cap counter clockwise and remove from the crankcase.
2. Loosen and remove the oil drain bung and allow the oil to drain into a suitable container.
3. Refit and tighten the oil drain bung once all of the oil has drained.
4. Fill the crankcase to the max. level with fresh oil, we recommend the use of 10W30 oil.
5. Refit the oil filler cap.

CLEAN OR REPLACE THE AIR FILTER

Clean or Replace The Air Filter (every 50 hours of use, or less if used in a dusty environment).

1. Remove the air filter cover.
2. Remove the air filter sponge element.
3. If the air filter is damaged contact your local distributor to purchase a replacement, If the filter is dirty wash the filter in a solution of warm water and mild detergent and rinse thoroughly. Leave the filter to dry completely, once dried immerse the filter in clean engine oil and squeeze the filter to remove excess oil - the filter should only be damp with oil.
4. Put the filter back into its original position and refit the air filter cover.

CLEAN OR REPLACE THE SPARK PLUG

Clean or replace the spark plug (every 50 hours of use).

1. Pull the spark plug cap to remove it from the spark plug.
2. Use the supplied spark plug spanner to remove the spark plug.
3. Check for discoloration and remove any carbon build up.
4. Check the spark plug gap, it should be between 0.7 and 0.8mm; Adjust / replace if necessary.
5. Check the overall condition of the plug and replace if damaged.
6. Reinstall the plug and spark plug cap.

MAINTENANCE

CHECK THE FUEL TANK FILTER

Just under the fuel cap is a fuel filter, check this filter periodically (every month) and remove any contaminants which may have accumulated.

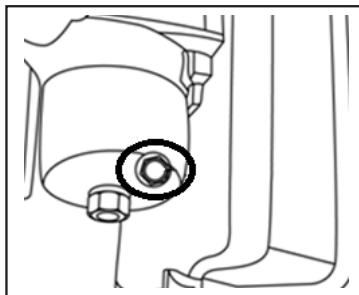
1. Remove the fuel tank cap and filter.
2. Clean the filter and, if damaged replace.
3. Insert the filter back into place.
4. Ensure the tank cap is tightly secured.

TRANSPORTATION AND STORAGE

To prevent fuel spillage when transporting or during temporary storage, the pressure washer should be stored upright in its normal operating position, ideally with all of the fuel removed and with the engine switch off.

Ensure the storage area is free of excessive humidity and dust, and is well ventilated. Completely drain the fuel from the tank,

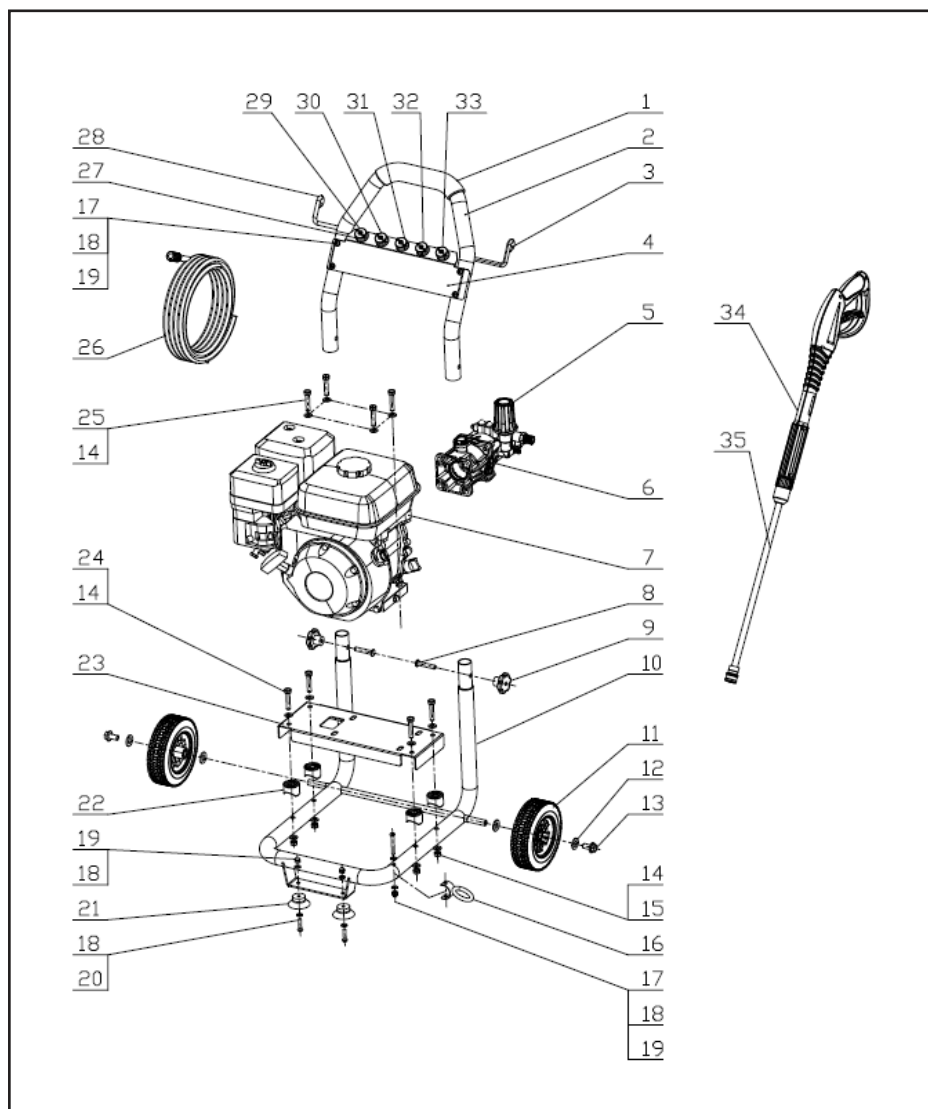
- Remove the drain screw from the carburettor.
- Drain the fuel from the tank, carburettor and hose into a suitable container.
- Refit the carburettor drain screw once the fuel is completely drained.
- Discharge the oil.
- Remove the spark plug and fill the cylinder with 1 tablespoon of fresh oil. Refit the spark plug. Pull the starting cord slowly until the resistance is strong, this indicates that the piston is moving to the top of the compression stroke and the valves will be closed.
- Ensure that there is no water left in the system by holding the trigger open and blowing compressed air through the water inlet until all of the water has been removed from the system.



TROUBLESHOOTING

Problem	Possible reason	Solution
Engine will not start (or stops during operation).	<ul style="list-style-type: none"> • Low-oil shutdown. • Engine switch not in the “ON” position. • Pressure built up in the hose. 	<ul style="list-style-type: none"> • Fill engine with 10W-30 oil. • Turn switch to the “ON” position. • Squeeze trigger while starting.
Engine sounds abnormal, it could be overloaded.	<ul style="list-style-type: none"> • Nozzle partially blocked. • Pressure built up in the hose. 	<ul style="list-style-type: none"> • Clean nozzle using nozzle cleaning tool or similar e.g. a paper clip. • Squeeze trigger to release the pressure.
Engine is running but pump won’t build maximum pressure or has irregular pressure.	<ul style="list-style-type: none"> • Supply tap closed or no water supply. • Unit has been stored in freezing temperatures. • Water inlet filter blocked. • Kink in inlet hose. • Lance tip worn or damaged. • Air in pump. 	<ul style="list-style-type: none"> • Open tap or check water supply • Thaw out unit completely including hose, gun and lance. • Clean filter. • Straighten inlet hose. Replace lance. • Run the pressure washer with pistol trigger pressed and lance removed until steady stream of water is released.
No intake of detergent.	<ul style="list-style-type: none"> • Detergent pipe not securely fitted to the unit. • Pipe cracked or split. • Lance set to high pressure. • Nozzle blocked. • Detergent too thick. 	<ul style="list-style-type: none"> • Push firmly into injector fitting. • Replace pipe. • Switch lance to low pressure mode. • Clean nozzle. • Dilute detergent.
Trigger will not move.	<ul style="list-style-type: none"> • Gun safety lock engaged. 	<ul style="list-style-type: none"> • Release safety lock.
Water in crankcase	<ul style="list-style-type: none"> • High humidity. • Worn seals. 	<ul style="list-style-type: none"> • Change oil more frequently • Change the oil seals.
Noisy operation.	<ul style="list-style-type: none"> • Worn bearings. • Air mixed with water 	<ul style="list-style-type: none"> • Change the bearing. • Check inlet lines for restrictions, leaks and/or correct sizing.
High crankcase temperatures.	<ul style="list-style-type: none"> • Wrong grade of oil. • Incorrect amount of oil in crankcase. 	<ul style="list-style-type: none"> • Use 10W-30 oil. • Adjust oil level to correct amount.
Rough/pulsating operating with pressure drop.	<ul style="list-style-type: none"> • Inlet restriction. • Air mixed with water 	<ul style="list-style-type: none"> • Check system for stoppages, air leaks, correctly sized inlet, plumbing to pump. • Check inlet lines for restrictions, leaks and/or correct sizing.

EXPLODED DRAWING 08984 08985



*For full exploded drawing & parts list for pump and engine contact:

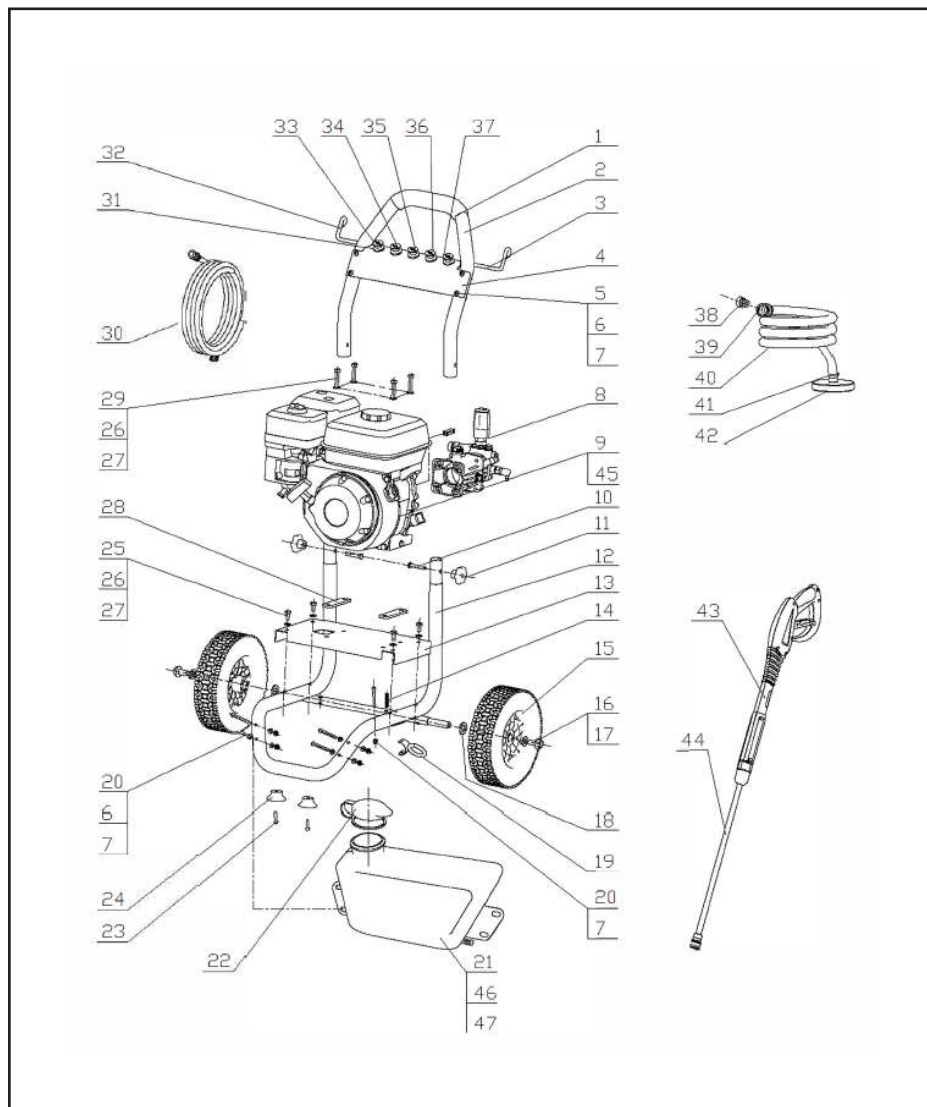
- SIP After Sales 01509 500400

- Email: technical@sip-group.com

PART LIST 08984 08985

Ref.	Description
1	Foam handle grip
2	Upper handle
3	Right hook
4	Nozzle plate
5a	Axial pump 08984
5b	Axial pump 08985
6	Shaft key
7	Engine Complete
8	Hand Bolt M8
9	Molded nut M8
10	Lower frame
11	6" Wheel
12	Washer 12
13	Hex bolt M8
14	Washer
15	Hex nylon lock nut
16	Wand ring
17	Hex socket screw M6
18	Washer
19	Nylon lock cap nut M6
20	Hex socket screw M6
21	Rubber foot
22	Rubber mount
23	Base plate
24	Hex bolt M8
25	Hex socket screw M6
26	High pressure hose
27	Nozzle retainer rubber
28	Left hook silver
29	Nozzle Red
30	Nozzle Yellow
31	Nozzle Green
32	Nozzle White
33	Detergent Nozzle Black
34	Pistol
35	Chromed Lance

EXPLODED DRAWING 08986



*For full exploded drawing & parts list for pump and engine contact:

- SIP After Sales 01509 500400

- Email: technical@sip-group.com

PART LIST 08986

Ref.	Description
1	Foam handle grip
2	Upper handle
3	Left hook silver grey
4	Nozzle plate
5	Hex socket screw M6
6	Washer
7	Nylon lock cap nut M6
8	Axial pump 08986
9	Lifan engine Key shaft
10	Bolt
11	Hand nut M8
12	Lower frame
13	Base plate
14	Cotter pin
15	Wheel 10"
16	Hex bolt M8
17	Washer
18	Washer
19	Lance bracket
20	Hex socket screw M6
21	Detergent tank
22	Detergent tank cap
23	Hex socket screw M6
24	Rubber foot
25	Hex bolt M8
26	Washer 8 Zinc plated
27	Washer 8 Zinc plated
28	Rubber mount
29	Hex bolt M8
30	High pressure hose
31	Nozzle retainer
32	Right hook
33	Red Nozzle
34	Yellow Nozzle
35	Green Nozzle
36	White Nozzle
37	Black Soap Nozzle
38	Filter
39	Hose coupler 1/2"
40	Suction hose
41	Hose clip
42	Inlet filter
43	Pistol gun
44	1/4"
45	Chromed lance
46	Clear PVC hose 1/4" 6*8mm
47	Clamp

UK - DECLARATION OF CONFORMITY

Declaration of Conformity

We
SIP (Industrial Products) Ltd
Gelders Hall Road
Shepshed
Loughborough
Leicestershire
LE12 9NH

England As the manufacturer within the UK, England, Scotland & Wales, declare that

SIP Tempest 215AX Petrol Pressure Washer - SIP Part No. 08985
SIP Tempest CW-P 215AX Petrol Pressure Washer - SIP Part No. 08985
SIP Tempest CW-P 225AX Petrol Pressure Washer - SIP Part No. 08986

Conforms to the requirements of the following standards, as indicated.

Supply of Machinery (Safety) Regulations 2008
Electromagnetic Compatibility Regulations 2016
Noise Emission in the Environment by Equipment for use Outdoors Regulations 2001
The Restriction of the Use of Certain Hazardous Substances in Electrical and Electronic Equipment Regulations 2012

including regulation:-

EU 2016/1628	Emission limits and type-approval for internal combustion engines for non-road mobile machinery
--------------	---

And including the relevant harmonised standard(s), including:-

BS EN 60335-1:2012 + A11:2014 + A13:2017+A1 : 2019+A2 : 2019+A14 : 2019
BS EN 60335-2-79 : 2012
BS EN ISO 14982 2012 : 2009
BS EN ISO 3744: 1995
BS EN ISO 3744:2010
BS EN ISO 22868:2021

* Noise measurements have been made in accordance with the internal control of production (Annex V).

The declared noise values are as follows:

The Guaranteed Sound Power Level		
104dB(A) 08984	112dB(A) 08985	112dB(A) 08986

Signed:



Mr P. Ippaso - Managing Director - SIP (Industrial Products) Ltd
Date: 31/01/2022



EU - DECLARATION OF CONFORMITY

Declaration of Conformity

We

SIP (Machinery Europe) Ltd
ASM Chartered Accountants
First Floor Block One
Quayside Business Park
Dundalk
County Louth
Republic of Ireland

As the manufacturer's authorised representative within the EC
SIP Tempest CW-P 160AX Petrol Pressure Washer - SIP Part No. 08984
SIP Tempest CW-P 215AX Petrol Pressure Washer - SIP Part No. 08985
SIP Tempest CW-P 225AX Petrol Pressure Washer - SIP Part No. 08986
Conforms to the requirements of the following directive(s), as indicated.

2006/42/EC	Machinery Directive
2004/30/EC	EMC Directive
2016/1628/EC	Emissions From Non-road Mobile Machinery
2000/14/EC	Noise Emission Directive*

And the relevant harmonised standard(s), including:

EN 60335-1:2012 + A11:2014 + A13:2017+A1 : 2019+A2 : 2019+A14 : 2019
EN 60335-2-79 : 2012
EN ISO 14982 2012 : 2009
EN ISO 3744: 1995
EN ISO 3744:2010
EN ISO 22868:2021

* Noise measurements have been made in accordance with the internal control of production (Annex V).

The declared noise values are as follows:

The Guaranteed Sound Power Level		
104dB(A) 08984	112dB(A) 08985	112dB(A) 08986

Signed:



Mr P. Ippaso - Managing Director - SIP (Industrial Products) Ltd
Date: 31/01/2022





Please dispose of packaging for the product in a responsible manner. It is suitable for recycling. Help to protect the environment, take the packaging to the local amenity tip and place into the appropriate recycling bin.

Never dispose of electrical equipment or batteries in with your domestic waste. If your supplier offers a disposal facility please use it or alternatively use a recognised recycling agent. This will allow the recycling of raw materials and help protect the environment.

**FOR HELP OR ADVICE ON THIS
PRODUCT PLEASE CONTACT
YOUR DISTRIBUTOR, OR SIP
DIRECTLY ON:**

TEL: 01509 500400

**EMAIL: sales@sip-group.com or
technical@sip-group.com
www.sip-group.com**