

Indoor Unit	(845-211-001)	ISD 211LYX
Outdoor Unit	(846-211-003)	OSA 211RLTFH
Cooling capacity range (gross)		9.4 ~ 25.3 kW
Cooling capacity (net) to AS/NZS 3823 T1		19.0
Heating capacity range		8.4 ~ 25.6 kW
Heating capacity H1		20.8 kW
Electrical input - cooling		6.0 kW
Electrical input - heating		5.8 kW
EER / AEER (cooling)		3.15 / 3.13
COP / ACOP (heating)		3.57 / 3.54
Unit Controllers		UC8 / IUC
Refrigerant		R32
Refrigerant precharge for 15 m		5.2 kg
Minimum floor area (@2.4m below ceiling diffuser)		14.4 m ²
Additional charge req'd for over 15 m		60 g/m
Maximum line length		60 m
Max. charge / Min. floor area (below ceiling diffuser)		7.9 kg / 33.2 m ²
Separation limit: OSA above ISD		20 m
Separation limit: OSA below ISD		20 m
Suction line		19 mm OD
Liquid line		9.5 mm OD
Compressor oil type		POE-46 (NXG5020 or equivalent)
Additional oil charge over 40 m length		10 ml/m
Compressor type		inverter scroll
Power supply via OSA		3 ph. 400V ac 50Hz
Compressor (3ph.) run amps at rating cond.		9.0 A
Indoor fan motor size		1250 W
Rated indoor fan speed		6.5 V
Indoor fan motor (1ph.) - full load		6 A
Outdoor fan motor (1ph.) - full load		1 A (x2)
Outdoor fan capacitor size		5 μ fd (x2)
Control circuit breaker (internal)		10 A
Running amps (total system)		13.0 / 9.0 / 10.0 A
Max. running amps (total system)		23.0 / 14.5 / 15.5 A
RCD type recommended		type B, 30mA
Net weight ISD / OSA		86 / 129 kg

Accessories:

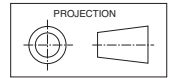
ISD Spring mounting kit	307-161-101
ISD Spigot plate adaptor Ø450 x 2 (NZ only)	525-311-715
ISD Filter box c/w EU2/G2 filter (NZ only)	493-000-006
ISD Replacement filter (NZ only)	119-000-082
ISD Supply air plenum Ø400 x 3 (NZ only)	492-000-005
ISD Return air plenum Ø400 x 3 (NZ only)	492-100-005
ISD Fresh air inlet spigot Ø150 (NZ only)	325-000-051
OSA Drain connection adaptor 25/13mm	060-000-039
OSA Anti-vibration mounts - rubber (x4)	060-000-170
OSA Wall mounting kit	526-061-007

Optional Controls:

SAT-3 Room temperature controller	201-000-146
Six Zone Control kit for SAT-3	201-000-073
TZT-100 Room temperature controller	201-000-350

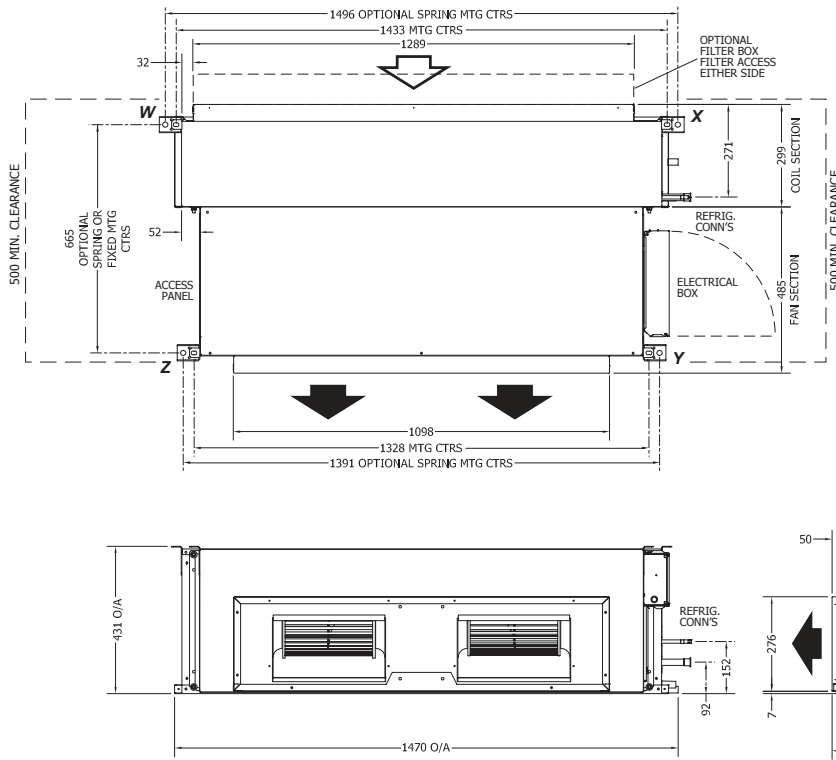
Refer to temperzone for other options, eg remote sensors, connection wires.

DIMENSIONS (mm)



Not to Scale

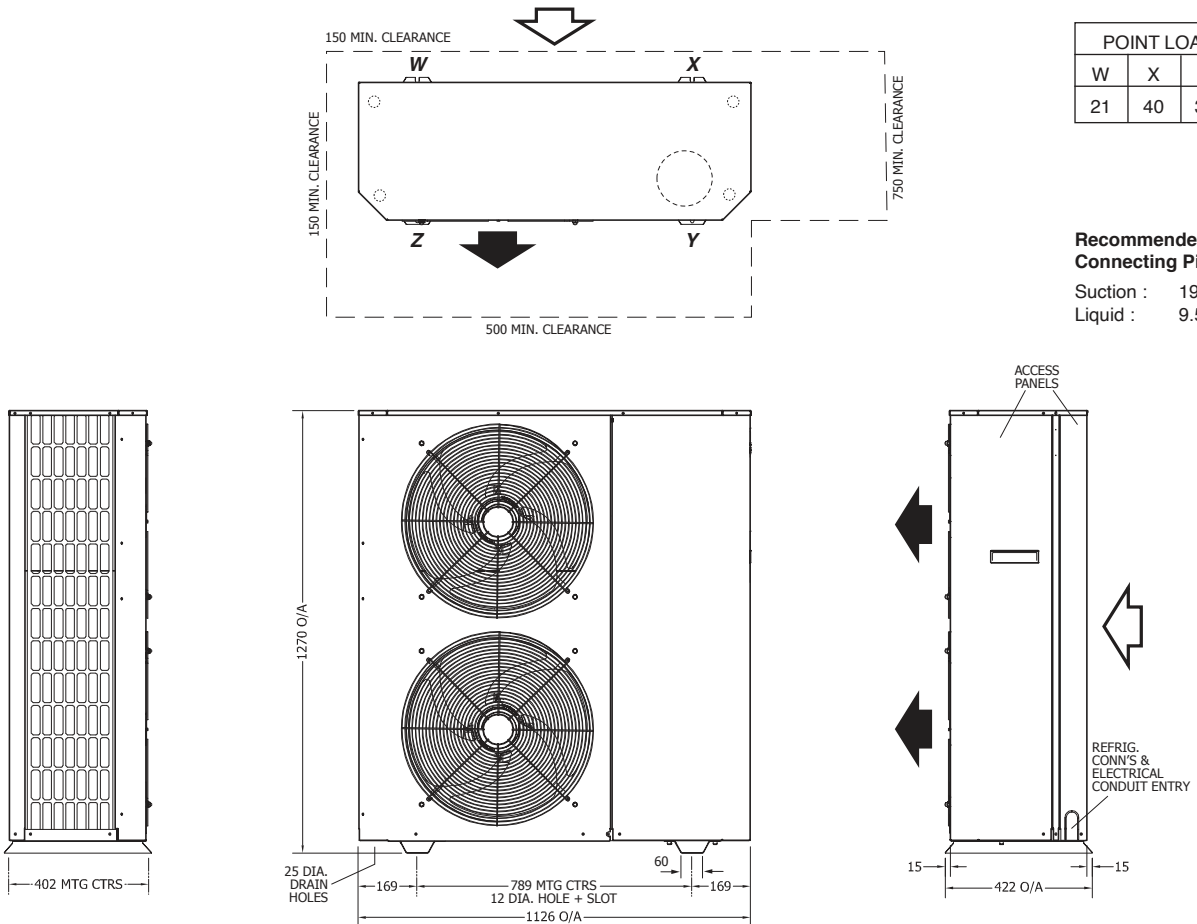
ISD 211LYX Indoor Unit



POINT LOADS (kg)			
W	X	Y	Z
21	24	21	20

Note: Fan motor can be accessed from panel above, below or sides; no more than two panels at once.

OSA 211RLTF Outdoor Unit

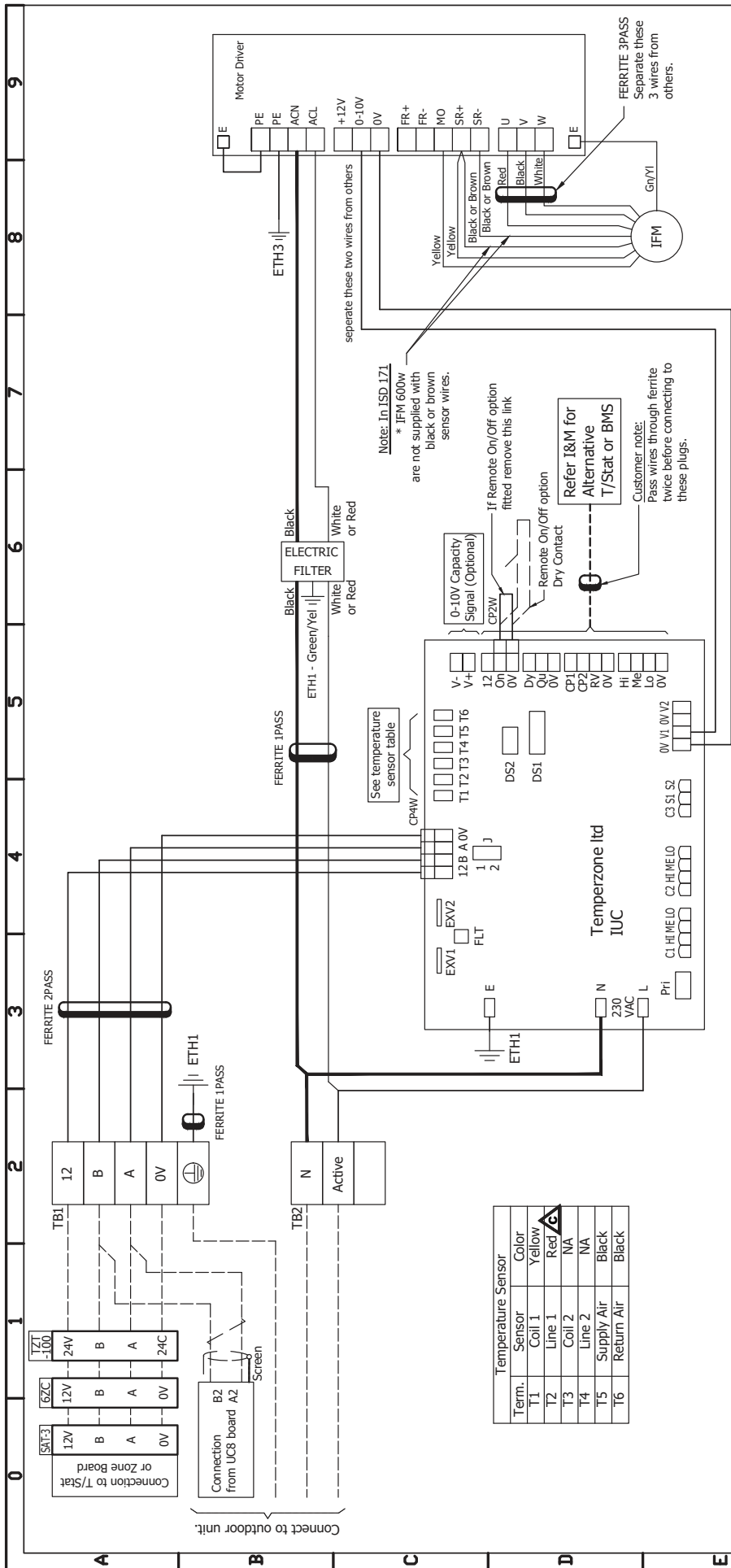


POINT LOADS (kg)			
W	X	Y	Z
21	40	37	34

Recommended Connecting Pipe Sizes
 Suction : 19 mm OD
 Liquid : 9.5 mm OD

NOTE

Specifications are subject to change without notice due to the manufacturer's ongoing research and development programme.



Site commissioning DIP switch setting options

Step 1: Set Output Voltage for HIGH		Step 2: Set Voltage Range LOW-HIGH			
DIP 1	DIP 2	DIP 3	HIGH	DIP 5	RANGE
Off	Off	Off	6.5	Off	2
On	Off	Off	7	On	3
Off	Off	Off	7.5	Off	4.5
On	On	Off	8	On	6
Off	Off	On	8.5	On	
Off	Off	On	9	On	
Off	On	On	9.5	On	
On	On	On	10	On	

Notes:
To adjust indoor fan speed L/M/H settings, see section 3.2.6 of Installation & Maintenance document

IUC Board Jumper selection (J)

Position	Definition
1	Cable length >10m and IUC is at terminating of cable.
2	Cable length <10m and/or not at cable terminating end. (DEFAULT)

Factory Default DIP switch Selections for Models

UNIT	DS1 DIP switch selections				DS2 DIP switch selections			
	DIP 1	DIP 2	DIP 3	DIP 4	DIP 1	DIP 2	DIP 3	DIP 4
ISD171	On	Off	On	Off	On	Off	Off	Off
ISD211	On	Off	On	Off	On	Off	Off	Off
ISD251	On	Off	On	Off	On	Off	Off	Off

REV	DESCRIPTION	ECN	DATE	APPROVED
A	Initial Release			
B	EMC compliance updates.	N4327	26-08-20	A.W.G.
C	Temp Sensor T2 color Red was Blue	N4345	30-12-20	R.P.B.

Drawn: D.A.B.
Date: 24-07-19
Apprvd: P.J.L.

Client Wiring

DO NOT SCALE - ASK

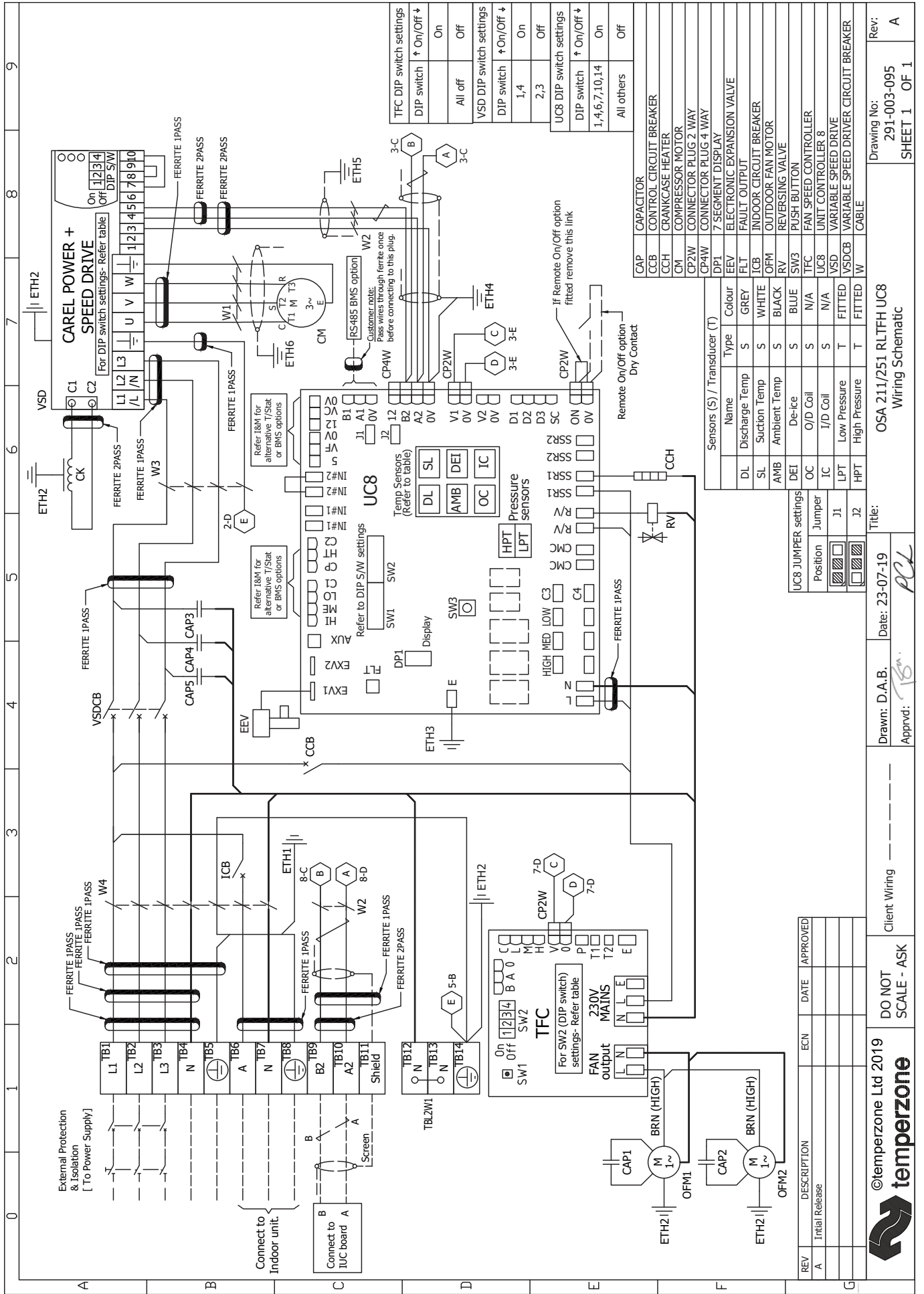
©temperzone Ltd 2019
temperzone

Title: ISD 171/211/251 LYX Wiring Schematic

Drawing No: 291-003-099
SHEET 1 OF 1

Rev: C

Indoor-Outdoor Connection Wiring: refer 'Installation & Maintenance' pamphlet, page 6.



Drawing No: 291-003-095
SHEET 1 OF 1

Rev: A

Title: OSA 211/251 RLTFH UC8
Wiring Schematic

Drawn: D.A.B. Date: 23-07-19
Approved: [Signature]

Client Wiring

DO NOT SCALE - ASK

©temperzone Ltd 2019
temperzone