

Safety Rules

! WARNING

Read and understand all instructions. Failure to follow all instructions listed below, may result in electric shock, fire and/or serious personal injury.

SAVE THESE INSTRUCTIONS

Work Area

Keep your work area clean and well lit. Cluttered benches and dark areas invite accidents. Keep the floor around the machine clean and free of scrap material, oil and grease,

Do not operate drill press in explosive atmospheres, such as in the presence of flammable liquids, gases, or dust. Machine creates sparks which may ignite the dust or fumes.

Keep by-standers, children, and visitors away while operating a machine. Distractions can cause you to lose control.

Electrical Safety

Before plugging in the machine, be certain the outlet voltage supplied is within the voltage marked on the nameplate. Do not use "AC only" rated machine with a DC power supply.

Make sure the machine is properly grounded.

Avoid body contact with grounded surfaces such as pipes, radiators, ranges and refrigerators. There is an increased risk of electric shock if your body is grounded. Electrician's rubber gloves and footwear will further enhance your personal safety.

Don't expose this drill press to rain or wet conditions. Water entering a machine will increase the risk of electric shock.

Do not abuse the cord. Never use the cord to carry the machines or pull the plug from an outlet. Keep cord away from heat, oil, sharp edges or moving parts. Replace damaged cords immediately. Damaged cords increase the risk of electric shock.

When operating a machine outside, use an outdoor extension cord marked "W-A" or "W." These cords are rated for outdoor use and reduce the risk of electric shock.

Personal Safety

Stay alert, watch what you are doing and use common sense when operating the drill press. Do not use machine while tired or under the influence of drugs, alcohol, or medication. A moment of inattention while operating machine may result in serious personal injury.

Dress properly. Do not wear loose clothing or jewelry. Contain long hair. Keep your hair, clothing, and gloves away from moving parts. Loose clothes, jewelry, or long hair can be caught in moving parts. Keep handles dry, clean and free from oil and grease.

Avoid accidental starting. Be sure switch is "OFF" before plugging in. Carrying tools with your finger on the switch or plugging in tools that have the switch "ON" invites accidents.

Remove adjusting keys or wrenches before turning the tool "ON". A wrench or a key that is left attached to a rotating part of the machine may result in personal injury.

Do not overreach. Keep proper footing and balance at all times. Proper footing and balance enables better control of the tool in unexpected situations.

Use safety equipment. Keep safety guards in place at all times when the machine is in use. If removed for maintenance purposes, use extreme caution and replace the guards immediately.

Machine Use and Care

Use clamps or other practical way to secure and support the workpiece to a stable platform. Holding the work by hand or against your body is unstable and may lead to loss of control.

Do not force machine. Use the machine at the correct speed and feed rate for your application. The correct machine will do the job better and safer at the rate for which it is designed.

Do not use machine if switch does not turn it "ON" or "OFF". Any machine that cannot be controlled with the switch is dangerous and must be repaired.

Disconnect the plug from the power source before making any adjustments, changing accessories, or storing the machine. Such preventive safety measures reduce the risk of starting the machine accidentally.

Store idle machines out of reach of children and other untrained persons. Machines are dangerous in the hands of untrained users.

Maintain machines with care. Keep cutting tools sharp and clean. Properly maintained tools, with sharp cutting edges are less likely to bind and are easier to control. Any alteration or modification is a misuse and may result in a dangerous condition.

Check for misalignment or binding of moving parts, breakage of parts, and any other condition that may affect the operation. If damaged, have the tool serviced before using. Many accidents are caused by poorly maintained machines. Develop a periodic maintenance schedule for your machine.

Use only accessories that are recommended by the manufacturer for your model. Accessories that may be suitable for one machine, may become hazardous when used on another machine.

Never leave the machine running unattended. Turn the power off and do not leave the machine until it comes to a complete stop.

Service

Machine service must be performed only by qualified repair personnel. Service or maintenance performed by unqualified personnel could result in a risk of injury. For example: internal wires may be misplaced or pinched, safety guard return springs may be improperly mounted.

When servicing a machine, use only identical replacement parts. Follow instructions in the Maintenance section of this manual. Use of unauthorized parts or failure to follow Maintenance Instructions may create a risk of electric shock or injury. Certain cleaning agents, such as gasoline, carbon tetrachloride, ammonia,

etc. may damage plastic parts.

Specification

Rated input power	1300W	Chuck capacity	1-10mm
No load speed	500-8000RPM	Fiber wheel size	φ 75X10X20mm
		Shaft chuck capacity	0.3-4mm

Assembly

! WARNING Read and understand all assembly instructions before attempting assembly! Failure to comply may cause serious injury!

! WARNING Do not attempt to turn on power before this machine is completely assembled.

Before Assembly

- 1, Compare the contents of the shipping container with the list on this manual. Report any shortages or damage to your distributor.
- 2, Clean all rust protected surfaces with kerosene or a light sovent. Do not use lacquer thinner, paint thinner, or gasoline. These will damage plastic components and painted surface.

Assembly Standard Attachments

! WARNING One set of spindle or mandrel only for one side of machine, otherwise the attachment may release on load, and may result in serious personal injury.

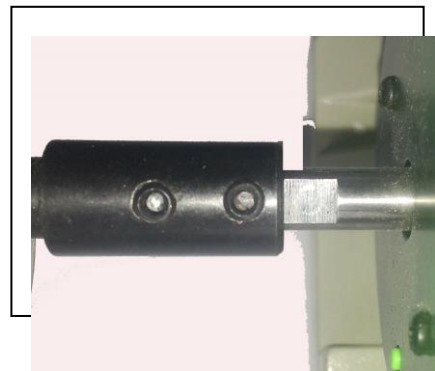
NOTE: When assembly this machine, please noted that some parts can only be mounted on Left or Right of machine.

- 1, Follow as Pic.2 to mount the parts.
- 2, Fiber wheel can only be mounted on the left.
- 3, Flexible shaft and drill chuck can only be on the right.
- 4, The taper spindle marked with "L" means only can be mounted on the Left, and "R" means on the right.



Assembly Spindles and Mandrels

1. Check two screws on the Spindle are release before assembly.
2. Attach the spindles or mandrels by sliding them onto the motor shaft as deep as possible. Be sure that the two set screws line up with the flat on the motor shaft.
3. Tighten both screws securely by 2.5mm Hex Key.



Adjustment

! WARNING Unplug the machine from the power source before making any adjustment.

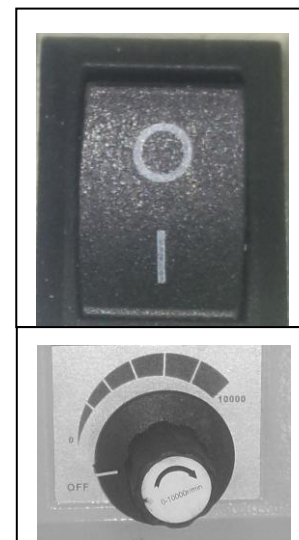
Change Spindle Speed

This machine is designed to adjust the output speed by electronic variable speed.

ON-OFF switch and Electronic Speed Adjustment

This machine is designed two "OFF" switches, ON-OFF switch and OFF on the Speed Controller.

- 1, Confirm Power Off the switch after every time of use this machine. Rotate the Adjustment Knob Count-clockwise till the line on the knob point to the "OFF" and both heard a ticking sound, then the switch is OFF.
- 2, Press the side of "O", then the switch is OFF too.
- 2, Clockwise rotate the knob means higher speed, and



Count-clockwise means lower speed.

NOTE: The machine with steel base has not equipped ON-OFF switch.

! IMPORTANT This machine is designed two "OFF" switches, ON-OFF switch and OFF on the Speed Controller. Before plug in or stop running machine long time, make sure the ON-OFF switch is OFF.

Operation

! WARNING The tool should not be in contact with the workpiece surface when you turn the tool on or off. Otherwise a poor sanding finish or damaged of the belt may result.

! WARNING Before plugging in the tool, always check to see that the switch actuates properly and returns to the "OFF" position.

Buffing or Polishing with Wheels

Because of the higher max speed 10000RPM and variable speed control, this machine is convenient for grind and polish different materials.

- 1, Different size buffing wheel can be used to obtain different surface speeds. In generally, Lower surface speed recommended for polishing, and higher surface speed recommended for buffing.
- 2, The surface speed can be varied while using the same wheel through the speed controller. This will give better results on different types of materials.
- 3, the max speed of 10000RPM is also fact enough to permit the use of small mounted abrasive points, brushes, butters or other accessories in the chuck or flexible shaft chuck.

Maintenance

Service

! WARNING

Preventive maintenance performed by unauthorized personnel may result in misplacing of internal wires and components which could cause serious hazard. We recommend that all machine service be performed by a Factory Authorized Service Station.

Tool Lubrication

Your machine has been properly lubricated and is ready to use. It is recommended that machines with gears be regreased with a special gear lubricant at every brush change.

Carbon Brushes

The brushes and commutator in your machine have been engineered for many hours of dependable service. To maintain peak efficiency of the motor, we recommend every 50 hours of operation the brushes be examined. Only genuine replacement brushes specially designed for your machine should be used.

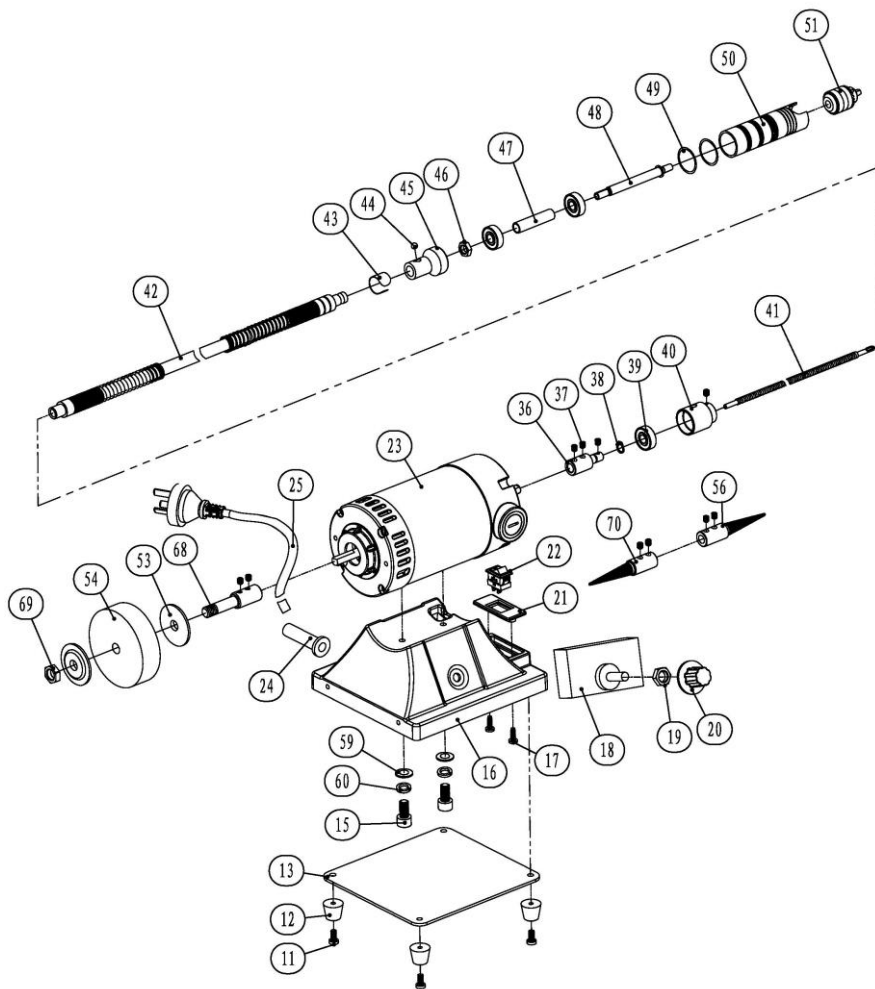
Cleaning

! WARNING

To avoid accidents always disconnect the machine from the power supply before cleaning or performing any maintenance. The machine may be cleaned most effectively with compressed dry air. Always wear safety goggles when cleaning tools with compressed air. Ventilation openings and switch levers must be kept clean and free of foreign matter. Do not attempt to clean by inserting pointed objects through openings.

! CAUTION

Certain cleaning agents and solvents damage plastic parts. Some of these are: gasoline, carbon tetrachloride, chlorinated cleaning solvents, ammonia and household detergents that contain ammonia.



No.	Parts Name	No.	Parts Name
11	Screw M4x12	42	Flexible Shaft
12	Rubber Feet	43	Steel Ball Lock
13	Base Cover	45	Short Adaptor of Handle
15	Hex Bolt M8x16	46	Copper Nut M8
16	Base	47	Small Alu. Tube
17	Screw ST4x12	48	Shaft of Handle
18	Speed Controller PSB	49	O Ring 24
20	Speed Knob	50	Handle Tube
23	Motor	51	Chuck 4MM
24	Cord Sleeve	53	Flange
25	Cord	54	Fiber Wheel
36	Flex Shaft Adaptor	56	Taper Spindle (Right)
37	Fixed Screw M5 x4	59	Flat Washer 8
38	Circlip for Shaft 8	60	Right Washer 8
39	Bear 608	68	Mandrels for Fiber Wheel
40	Flex Shaft Alu. Bush	69	Hex Nut M10
41	Shaft Core	70	Taper Spindle (Left)