



11-in-1 USB-C DisplayLink Docking Station

User Manual | WVS-H78

Introduction

This 11-in-1 USB-C DisplayLink Docking Station features 1 × USB-C port (Host Port) 1 × DP port, 1 × USB-C (video) port, 2 × HDMI ports, 2 × USB 3.2 Gen 2 Type-C ports, 1 × USB 3.2 Gen 2 Type-A port, 1 × RJ45 port, 1 × SD card slot, 1 × TF card slot, and 1 × PD power supply port, expanding connectivity for phones, tablets and laptops with USB 3.2-C or Thunderbolt 3/4 ports.

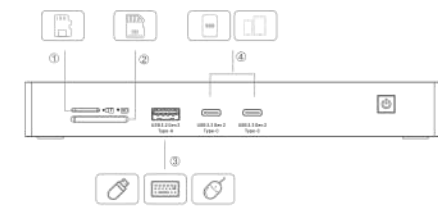
The DP, USB-C (video), and HDMI ports allow you to connect to TVs, monitors, projectors, and other display devices, supporting up to 4K@60Hz resolution. The USB ports enable connections to keyboards, mice, and high-speed mass storage devices. The RJ45 port supports data transfer rates up to 1000Mbps. The SD/TF card slots allow for reading and writing to both types of memory cards, offering dual card functionality. And the PD power port supports external power supply up to 100W.

Specifications

Model: TPW
Interface: USB-C (Host Port)/DP/USB-C (Video)/HDMI*/USB 3.2 Gen 2 Type-C*/USB 3.2 Gen 2 Type-A/RJ45/SD/TF/PD
Electroplating Process: Nickel-Plated
Shell: Aluminum Alloy
Power Supply: 100W PD
Resolution: WinOS/macOS (SST/MST)
HDMI1/DP1/HDMI2/USB-C2: 4K@60Hz
HDMI1 + HDMI2: 4K@60Hz
DP1 + HDMI2: 4K@60Hz
HDMI1 + USB-C2: 4K@60Hz
DP1 + USB-C2: 4K@60Hz
Data Transfer Rates: 10Gbps (USB 3.2 Gen 2 Type-C/USB 3.2 Gen 2 Type-A)
Transmission Rate: 10/100/1000Mbps
Card Slot Type: SD/TF-2-LUN (Read/Write Two Cards Simultaneously)
Card Slot Speed: USB 3.0

Product Overview

- TF: Insert a TF memory card.
- SD: Insert a SD memory card.
- USB 3.2 Gen 2-A: Connect to a keyboard, mouse, or high-speed mass storage device.
- USB 3.2 Gen 2-C: Connect to a keyboard, mouse, or high-speed mass storage device.
- DP 1: Connect to a display (cannot be used simultaneously with HDMI 1 on Display 1).
- HDMI 1: Connect to a display (cannot be used simultaneously with DP 1 on Display 1).
- USB-C 2: Connect to a display (cannot be used simultaneously with HDMI 2 on Display 2; supports screen extension only, no other functions).
- HDMI 2: Connect to a display (cannot be used simultaneously with USB-C 2 on Display 2).
- PD: Connect to a power source.
- Host Port: Connect to a laptop, tablet, or phone with USB 3.2-C or Thunderbolt 3/4/5.
- RJ45: Connect to an Ethernet patch cable.



MacOS System Setup Guide

MacOS	Extended Mode	Mac screen shows different content, while 3 connected external displays show the same content.	
	Mirror Mode	All 4 screens (including laptop) display the same content.	

Monitor

1. Setting Up Extended/Mirror Mode



2. Identifying Displays in Extended Mode

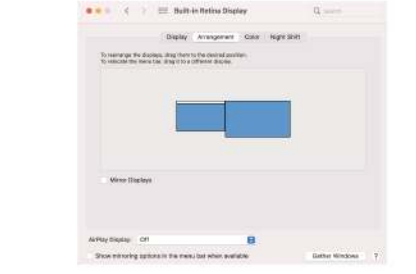


3. Screen Arrangement (Extended Mode)

Move your mouse between displays by dragging in the desired direction:



4. Menu Bar Customization

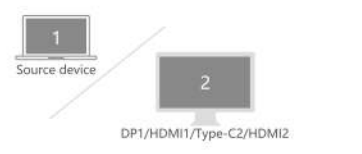


5. macOS Display Resolutions in Extended Mode

2 External Displays



1 External Displays

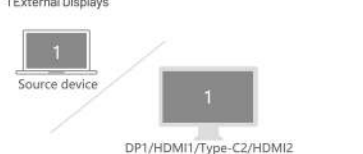


5-1. macOS Display Resolutions in Mirror Mode

2 External Displays



1 External Displays



Windows System Setup Guide

Windows	Mirror Mode	All 4 screens (including the laptop) display the same content.	
	Extended Mode	The laptop screen + 3 external monitors show 4 different displays.	

How to Configure:
Go to Start > Settings > System > Display.

1. Identifying Displays



For more interesting information and events, please follow us on social media platforms:

Facebook LinkedIn Instagram

For warranty service or support, please contact Vention team:
 Website: www.ventiontech.com Email: vention@ventiontech.com



2. Rearranging Display Order



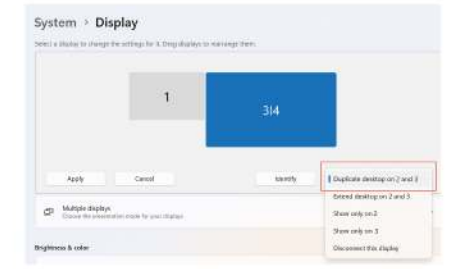
3. Set Primary Display

Select a display number. Check "Make this my main display" to set it as the primary display.



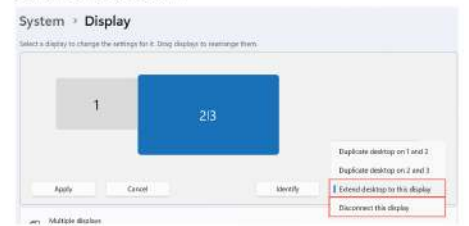
4. Duplicate (Mirror) Display

Under "Multiple displays", select "Duplicate desktop on X and Y". (Note: Only two displays can be mirrored at once.)



5. Extend (Independent) Display

Under "Multiple displays", select "Extend desktop on X and Y" to enable different content on each screen.



6. Enabling/Disabling Displays

To disable a display: Select the display number, and choose "Disconnect this display".



To enable a display: Select the display number, and choose "Extend desktop to this display".



7. Windows Display Resolutions in Extended Mode

2 External Displays

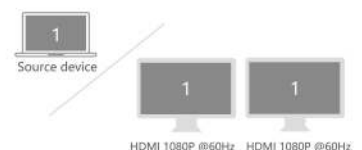


1 External Displays



7-1. Windows Display Resolutions in Mirror Mode

2 External Displays



1 External Displays



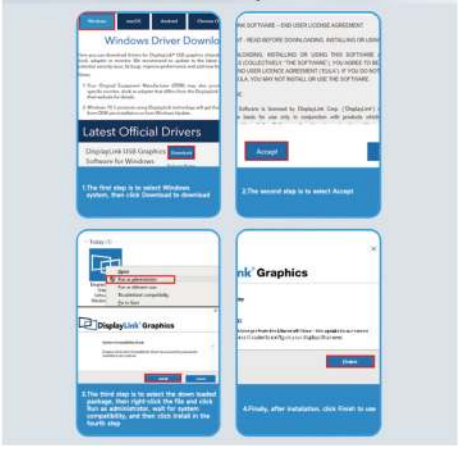
Driver Download Guide

Go to www.displaylink.com, click DOWNLOADS in the top right corner, and select your operating system.



- Select macOS and click "Download".
- Click "Accept" to agree to the terms.
- Open the downloaded file and click "Continue".
- Enter your device password (if prompted) and click "Install Software" to complete the setup.

Windows system



- Select Windows and click "Download".
- Click "Accept" to agree to the terms.
- Locate the downloaded file, right-click it, and select "Run as administrator". Wait for system compatibility checks, then click "Install".
- Once installed, click "Finish" to complete the setup.

FAQs

- Can the USB-C Port on Display 2 be Used for Data Transfer?
No. The USB-C port on Display 2 supports screen extension only and cannot be used for data transfer or PD charging.
- How to Check if a USB-C Port Supports Video Output?
1) Check the Port Label:
If you see a "DisplayPort" or "Thunderbolt" symbol next to the USB-C port, it usually supports video output.
2) Check the Device Specifications:
Look for "Video Output" or "DisplayPort Alt Mode" in the official specs of your device.
3) Test the Connection:
Use a video-supported cable (such as USB-C to HDMI or USB-C to DisplayPort) to connect to an external display (monitor, TV, etc.) and check if it works.
- Lower the resolution/refresh rate;
- Try a different HDMI/DP cable;
- Restart your laptop;
- Connect to a different laptop port.
- How to Achieve 92W PD Charging with the Docking Station?
Use a 100W (or higher) USB-C wall charger and a USB-C to USB-C cable (both must support 100W PD).
- Why Won't My Laptop Charge Through the Docking Station?
- Ensure the power adapter is plugged into the docking station's PD port and your laptop is connected to the USB-C port;
- Verify your laptop's USB-C port supports charging;
- Disconnect the docking station to your laptop.
- Does the Docking Station Get Hot?
Yes. Under heavy use, surface temperature may reach 38°C (varies with environment). This is normal for such devices.
- Ethernet Port Not Working?
- Go to Control Panel > Network and Internet > Network Connections to check if the adapter is detected.
- If detected, set a manual IPv4 address (make sure the IP is unused in your network to avoid conflicts).

Important Usage Note

- This docking station does not support plug-and-play. Please visit the DisplayLink official website, search for your system, and install the required drivers.
- Ensure your phone/tablet/laptop has a full-featured USB-C port (supporting video output).
- Display 1 & Display 2 ports cannot be used simultaneously on the same display group. To extend to 2 screens, select one port from Display 1 and one port from Display 2.

What's in the Box

