

# VEVOR<sup>®</sup>

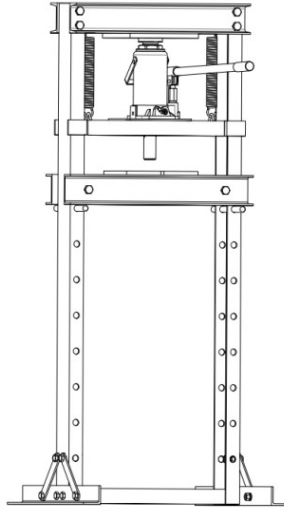
## TOUGH TOOLS, HALF PRICE

Support and E-Warranty Certificate  
<https://www.vevor.com/support>

### 12T SHOP PRESS USER MANUAL

We continue to be committed to provide you tools with competitive price. "Save Half", "Half Price" or any other similar expressions used by us only represents an estimate of savings you might benefit from buying certain tools with us compared to the major top brands and does not necessarily mean to cover all categories of tools offered by us. You are kindly reminded to verify carefully when you are placing an order with us if you are actually saving half in comparison with the top major brands.










## NEED HELP? CONTACT US!

Have product questions? Need technical support? Please feel free to contact us:

✉ [CustomerService@vevor.com](mailto:CustomerService@vevor.com)

**IMPORTANT:** PLEASE READ THESE INSTRUCTIONS CAREFULLY. NOTE THE SAFE OPERATIONAL REQUIREMENTS, WARNINGS AND CAUTIONS.

This is the original instruction, please read all manual instructions carefully before operating. VEVOR reserves a clear interpretation of our user manual. The appearance of the product shall be subject to the product you received. Please forgive us that we won't inform you again if there are any technology or software updates on our product.

WARNING SYMBOLS AND DEFINITIONS	
	This is the safety alert symbol. It is used to alert you to potential personal injury hazards. Obey all safety messages that follow this symbol to avoid possible injury or death.
	Indicates a hazardous situation which, if not avoided, will result in death or serious injury.
	Indicates a hazardous situation which, if not avoided, could result in death or serious injury.
	Indicates a hazardous situation which, if not avoided, could result in minor or moderate injury.
	Addresses practices not related to personal injury.

## IMPORTANT SAFETY INFORMATION

**WARNING** Read all safety warnings and instructions. Failure to heed these markings may result in personal injury and/or property damage. **Save all warnings and instructions for future reference.**

**The warnings, precautions, and instructions discussed in this manual cannot cover all possible conditions and situations that may occur. The operator must understand that common sense and caution are factors, which cannot be built into this product, but must be supplied by the operator.**

1. Keep hands away from arbor plates and press pin during use.
2. Do not move workpiece while compressed.
3. Release load before service or maintenance.
4. Bolt to floor before use.
5. Keep area under arbor plates clear. If arbor plates rest on obstruction (i.e. bolt, debris, etc.), it creates an uneven press, causing excess stress and possible breakage.
6. Avoid off-center loads. Do not operate if workpiece tilts or binds during compression.
7. STOP and release compression if you suspect imminent structural failure. If safe, inspect thoroughly and reposition before proceeding.
8. Do not compress springs or other elastic objects. They could disengage hazardously.
9. Wear ANSI-approved safety goggles, heavy-duty work gloves, and steel-toe work boots during set up and/or use.
10. Keep bystanders out of work area.
11. Do not stand directly in front of the press when loaded. Do not leave the press unattended when loaded.
12. Do not operate the hydraulic jack beyond rated capacity.
13. Inspect before every use; do not use if parts are loose or damaged.
14. Jack service must be performed only by qualified repair personnel. Service or maintenance performed by unqualified personnel could result in a risk of injury.

15. When servicing a jack, use only identical replacement parts – refer to attached, product specific parts list and diagram. Follow instructions in the “User -Maintenance Instructions” section of this manual. Use of unauthorized parts or failure to follow maintenance instructions may create a risk of injury.
16. Only use with accessories rated to handle the forces exerted by this tool during operation. Other accessories not designed for the forces generated may break and forcefully launch pieces.
17. Use only with bottle jack included with this press.
18. Industrial applications must follow OSHA requirements.
19. This product is not a toy. Keep it out of reach of children.
20. Maintain labels and nameplates on the Shop Press. These carry important safety information. If unreadable or missing, contact Harbor Freight Tools for a replacement.
21. The warnings, precautions, and instructions discussed in this instruction manual cannot cover all possible conditions and situations that may occur. It must be understood by the operator that common sense and caution are factors which cannot be built into this product, but must be supplied by the operator.



## SAVE THESE INSTRUCTIONS.

### 1. Forward

This Shop Press is designed for automotive, truck, implement, fleet, and industrial repair shops where pressing, bending, straightening and forming, is required. Typical applications include installation and removal of alternator and power steering pump bearings, axle bearings, transmission bearings, seals, u-joints and others. **Unlike** presses equipped with a separately mounted pump, the power unit on this press **can not** be equipped with a pressure gauge,

### 2. Main specifications

Capacity	Max working distance	Min working distance	Stroke	Packing size	Net weight
12T	705mm	40mm	125mm	1350*235*120mm	42kg

### 3. Safety instructions

#### Work area safety

1. Keep children and bystanders away while operating. Distractions can cause you to lose control.
2. Keep work area clean and well lit. Cluttered or dark areas invite accidents.

#### Personal safety

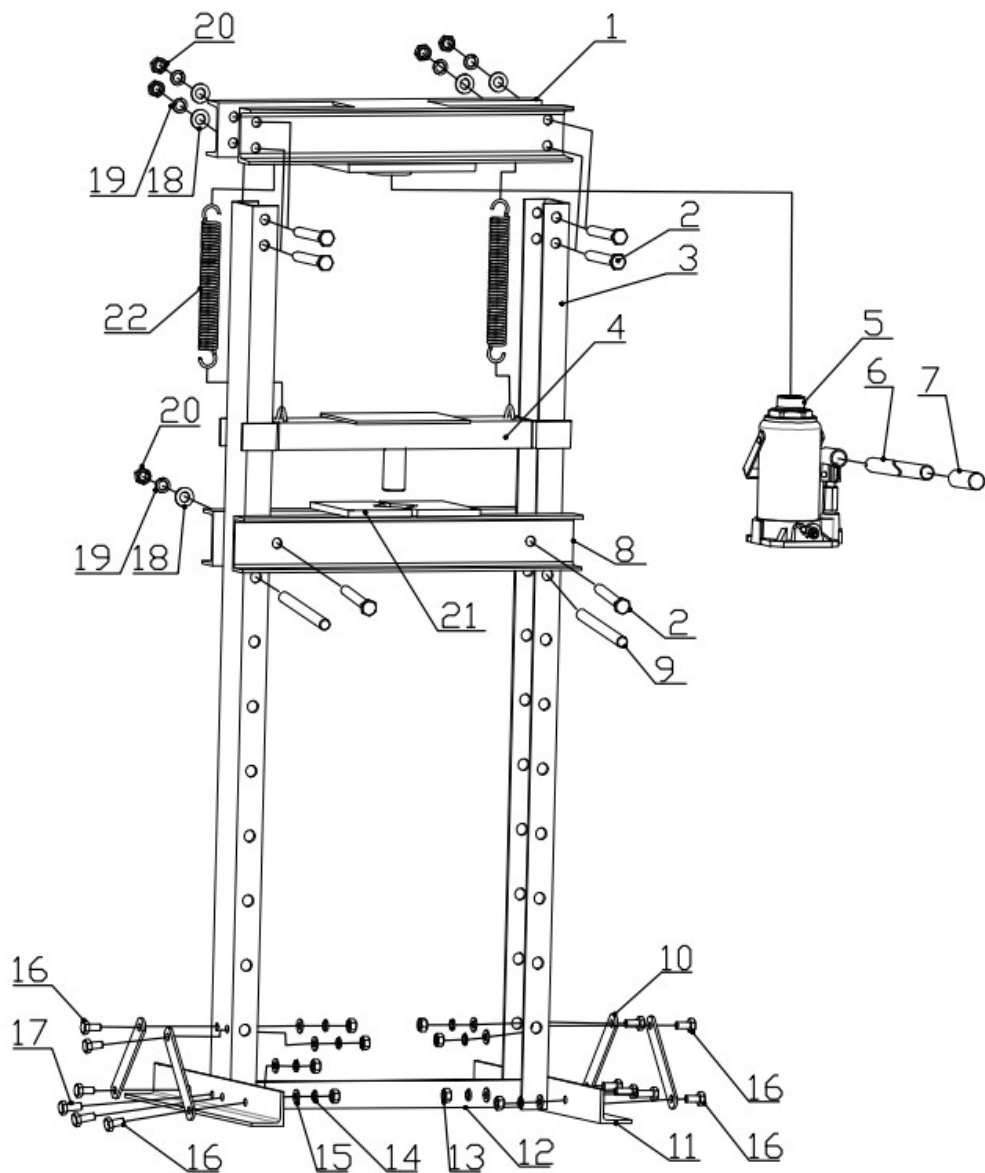
1. Wear ANSI-approved safety goggles and heavy-duty work gloves during use and service.
2. Stay alert and use common sense when operating. Do not use when tired or under the influence of drugs, alcohol or medication.

3. Do not overreach. Keep proper footing and balance at all times.
4. Dress properly. Do not wear loose clothing or jewelry. Keep your hair, clothing and gloves away from moving parts. Loose clothes, jewelry or long hair can be caught in moving parts.

#### 4.Main construction

##### parts list

PART NO	DESCRIPTION	QTY	PART NO	DESCRIPTION	QTY
1	Beam	1	12	Rung	1
2	M14x110 Bolt	6	13	M10 Nut	12
3	Press Frame	2	14	Spring WasherΦ10	12
4	Jack Plate	1	15	WasherΦ14	12
5	Jack	1	16	M10x20 Bolt	8
6	Handle lever	1	17	M10x25 Bolt	4
7	Handle cover	1	18	Spring WasherΦ14	6
8	Work bench	1	19	WasherΦ14	6
9	Pin	2	20	M14 Nut	6
10	Support rod	4	21	Arbor Plate	2
11	Foot	2	22	Pull Bolt	2



## 5. Operation instruction

1. 20-Ton Shop Press comes with two Arbor Plates. The Arbor Plates can be used individually or connected as shown below by the Arbor Lock.
2. To set the Aprons at a specific height, slide the two Pins through opposite adjustment holes on the Press Frame legs and secure in place using the two R-Clips.
3. Place the Arbor Plate onto the Press Apron , making sure to center it on the Press Apron.
4. **WARNING!** If the Arbor Plates rest on an obstruction (such as bolt, debris, etc.) an uneven base can be created. This can lead to unusual stress on the Arbor Plates and possibly a break and/or personal injury.
5. Insert the narrower jack handle (the end with the pin) into the larger handle and engage the pin into the "T" slot.
6. Using the slotted end of the jack handle, tighten (turn clockwise) the relief valve of the Jack.
7. Insert the larger tube of jack handle into the Jack Handle Connector located to the side of the Jack .
8. Pump the handle up and down to extend the Jack and operate the Shop Press.
9. **WARNING!** Should you detect any kind of structural failure, stop using the Shop Press immediately. If necessary, have the unit repaired by a qualified service technician.
10. When finished, remove the jack handle from the Jack Handle Connector and loosen (turn counter-clockwise) the relief valve of the Jack .

## Bleeding

1. Remove the Oil Fill Plug located on the back of the Jack to expose the Oil Fill Hole.
2. Open the Release Valve located on the front of the Jack, above. Insert the Jack Handle into the Pump Core. Slowly pump handle to force air out of the Oil Fill Hole.
3. As soon as the oil starts to come out of the hole, stop pumping. Replace the Oil Fill Plug. Close the Release Valve.
4. Check the oil level. It must be just below the Oil File Hole. If necessary, fill with high quality hydraulic oil.

## 6. Maintenance

1. **Caution** : Always release load from the Shop Press before performing any inspection, maintenance, or cleaning.
2. Before each use, inspect the general condition of the Shop Press. Check for structural failure, loose, cracked, bent or damaged parts, misalignment or binding of moving parts, and any other condition that may affect its safe operation. **Do not use damaged equipment.**
3. To prevent rust, coat all exposed surfaces with a light weight oil.
4. **Always keep the Arbor Plates and Press Apron area clean and free of oil and other lubricants.**
5. To clean, wipe with a clean, damp cloth.
6. When storing, keep the Shop Press covered with a clean drop cloth in a cool, dry location.

# Troubleshooting

## ⚠ WARNING

**TO PREVENT SERIOUS INJURY:**

**Use caution when troubleshooting a malfunctioning Jack.**

**Completely resolve all problems before use.** If the solutions presented in the Troubleshooting guide do not solve the problem, have a qualified technician inspect and repair the Jack before use.

**After the Jack is repaired: Test it carefully without a load by raising it and lowering it fully, checking for proper operation, BEFORE RETURNING THE JACK TO OPERATION.**

### DO NOT USE A DAMAGED OR MALFUNCTIONING JACK!

POSSIBLE SYMPTOMS						PROBABLE SOLUTION (Make certain that the Jack is not supporting a load while attempting a solution.)
Jack will not function at its weight capacity	Saddle lowers under load	Pump stroke feels spongy	Saddle will not lift all the way	Handle moves up when Jack is under load	Oil leaking from filler plug	
<b>X</b>	<b>X</b>					Check that Release Valve is closed fully.
<b>X</b>	<b>X</b>			<b>X</b>		Valves may be blocked and may not close fully. To flush the valves: 1. Lower the Saddle and securely close the Release Valve. 2. Manually lift the saddle several inches. 3. Open the Release Valve and force the saddle down as quickly as possible.
<b>X</b>		<b>X</b>	<b>X</b>			Jack may be low on oil. Check the oil level and refill if needed.
					<b>X</b>	Jack may require bleeding - see instructions on page 8. Unit may have too much hydraulic oil inside. Check oil level and adjust if needed.



EUREP GmbH  
Unterlettenweg 1a, 85051 Ingolstadt,  
Germany



EUREP UK LTD  
UNIT 2264, 100 OCK STREET, ABINGDON  
OXFORDSHIRE ENGLAND OX14 5DH

Importer: FREE MOOD LTD

Address: 2 Holywell Lane, London, England, EC2A 3ET

Importer: WAITCHX

Address: 250 bis boulevard Saint-Germain 75007 Paris

MANUFACTURE: ZHEJIANG ZHONGXING MACHINERY MANUFACTURING CO.,LTD  
ADDRESS: NANHU DAQIAO SHUANGLONG ROAD3064, JIAXING, ZHEJIANG,  
CHINA  
MADE IN CHINA



**VEVOR<sup>®</sup>**

**TOUGH TOOLS, HALF PRICE**

Support and E-Warranty Certificate

<https://www.vevor.com/support>